



# Quick Guide

Follow us

facebook.com/driftinnovation

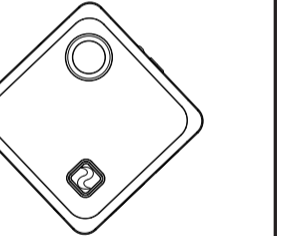
youtube.com/driftinnovation

vimeo.com/driftinnovation

instagram.com/drift\_innovation

twitter.com/driftinnovation

DRIFTINNOVATION.COM



Thank you for purchasing the Drift Compass.

### CUSTOMER SUPPORT

Download the full manual and check our official website for firmware updates, customer support, news about our products and videos from our users:

[www.driftinnovation.com](http://www.driftinnovation.com)

If you have any suggestions, comments or concerns, please contact our customer support team at:

[support@driftinnovation.com](mailto:support@driftinnovation.com)

### WARRANTY

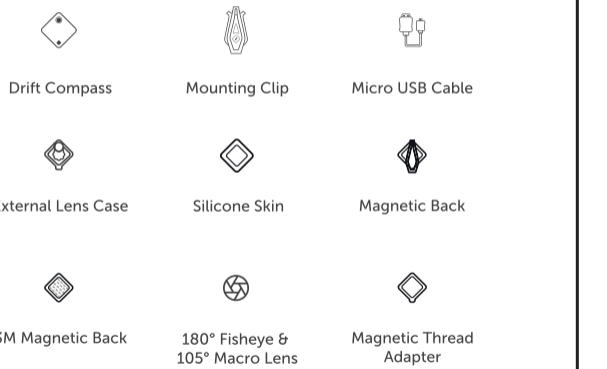
Warranty does not apply if the product is damaged due to physical abuse, mishandling, accident, fire, frostbite, water damage, negligence or failure to follow the supplied operating instructions. For more information on warranty, see:

[driftinnovation.com/warranty](http://driftinnovation.com/warranty)

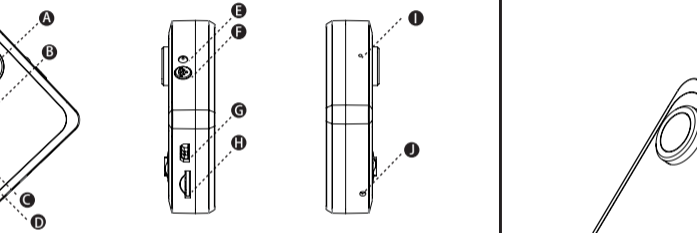
## Contents

Package Contents   About Your Camera	4-5
Initial Setup   Getting Started	6-7
Using the Camera	8-9
Using the External Lens Case   Using the Standard Clip	10-11
Mode Selection   Settings	12-13
Connecting to Drift Life App   Wi-Fi	14-15
Connecting the Camera   Specifications	16-17
Accessory Guide	18-19
Disclosures	20-22

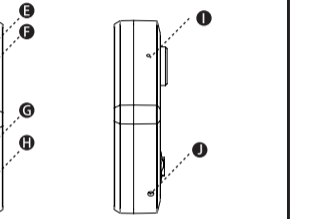
## Inside the Box



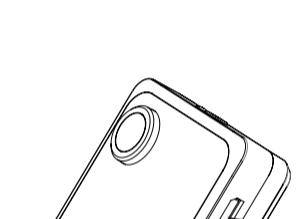
## About Your Compass



- Lens
- TAP Surface
- MODE Button
- MODE Status LED

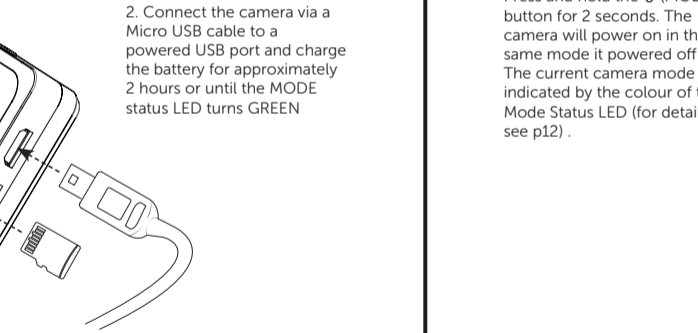


- Wi-Fi/BT Status LED
- Wi-Fi/BT Button
- USB Port (Micro-B)
- Micro SD Card Slot



- Microphone
- Reset Button

## Initial Setup



1. Insert a class 6 or higher Micro SD card (up to 32GB)
2. Connect the camera via a Micro USB cable to a powered USB port and charge the battery for approximately 2 hours or until the MODE status LED turns GREEN

## Getting Started

### Power On and Off

Press and hold the (MODE) button for 2 seconds. The camera will power on in the same mode it powered off in. The current camera mode is indicated by the colour of the Mode Status LED (for details, see p12).

### Mode Navigation

To change the current camera recording mode press the (MODE) button once. Changing between Video, Photo and Timelapse.

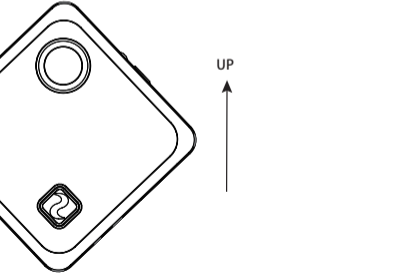
### Mode Settings

To change the camera settings from their default values, you must use the Drift Life App (for details, see p14).

## Using the Camera

### Orientating the Camera UP

Always ensure the Camera lens is on top of the camera to ensure video and image capture is right side up. To stand the camera on a flat surface, clip on a shirt or strap use the STANDARD CLIP.



## Using the Camera

There are two control methods for the Compass and you can select between them using the Drift Life application. By default, the Compass is set to 'Tap to Record' (see below). To change between the two modes follow the below steps:

1. Download the Drift Life app from Google Play (Android), or the App Store (iOS)
2. Launch Drift Life, select 'Connect Camera' and follow the in-app instructions
3. When you see your camera's live preview tap the settings icon in the top-right corner to navigate to your Compass settings menu
4. Select 'Tap Function' and choose between 'Tap to record' or 'Tap to change mode'

### Tap to Change Mode:

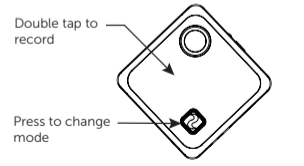
Double tap to change mode

Press to record

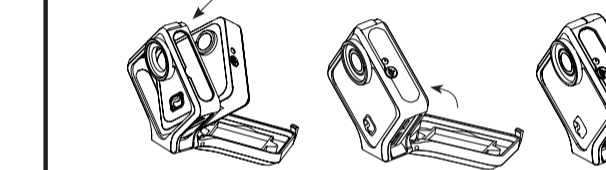
### Tap to Record:

Double tap to record

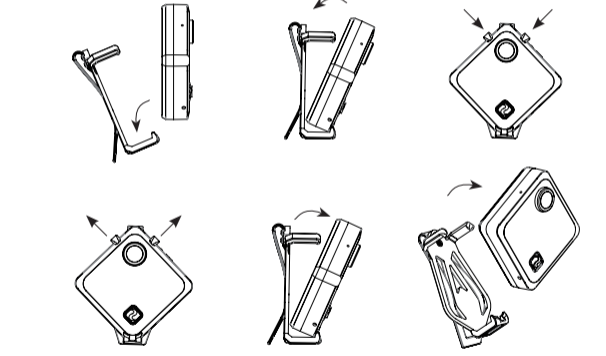
Press to change mode



## Using the External Lens Case



## Using the Standard Clip



## Mode Selection

### VIDEO MODE (GREEN LED)

The camera will start/stop recording video when the camera surface is "double tapped". The camera will default record in 1080p at 30FPS.

### PHOTO MODE (YELLOW LED)

The camera will capture a still image when the surface is "double tapped". The camera shoots 8MP photos.

### TIMELAPSE MODE (PURPLE LED)

The camera will capture a series of still images at a default interval of 1min. "Double tap" the surface of the camera to start and stop timelapse recording.

If the interval is set to 10s or above, the camera will automatically go into a power saving mode in between the timelapse photos/videos. This conserves battery life and allows you to capture extended timelapse photos/videos.

\* Note: See page 9 for details on how to change your Compass controls

## Settings

- Video Mode: 1080p: 25 / 30 fps  
720p: 25 / 30 / 50 / 60 fps
- Photo Mode: 12MP / 8MP / 5MP  
Photo / Video
- Timelapse Mode: 1s / 2s / 3s / 10s / 30s / 1m / 2m / 4m / 10m / 60m
- Timelapse Interval: 10m / 60m
- Camera LED: On / Off
- Camera Off: Off / [2min] / 5min
- Date: Year / Month / Day
- Format Memory Card: Yes / No
- Auto-Sync: Yes / No
- Firmware Version: Display Current Version

Default settings.

\*See page 15 for turning ON and off Wi-Fi.  
\*\* Note: To change from default settings, you must connect to the Drift Life App. (see page 14).

## Connecting to Drift Life App

The Drift Life app allows you to change the Compass settings, live preview from the camera, media playback and auto-syncing for Drift cloud storage / backup.

From the app, users can also live broadcast from the Drift Compass and share their favourite photo/video memories with friends, other Drift users and third party social networks.

For more information about the Drift Life app, please visit: [www.driftinnovation.com](http://www.driftinnovation.com)

DOWNLOAD THE DRIFT LIFE MOBILE APPLICATION.

Available on:



## Wi-Fi

### Turning Wi-Fi On and Off

Press the Wi-Fi Button to turn the camera Wi-Fi ON.

### Wi-Fi Direct

Connect your mobile device to your camera by connecting to Wi-Fi network 'COMPASS\_XXXX' where XXXX are the last 5 digits of your camera serial number. The Wi-Fi LED will blink GREEN when Wi-Fi successfully powers on and Wi-Fi Direct mode is entered.

Colour	Function
Wi-Fi LED - slowly flashing - RED	Press the Wi-Fi button to turn Wi-Fi on.
Wi-Fi LED - GREEN	Successfully initiated and Wi-Fi Direct mode is engaged.
Wi-Fi LED - BLUE	The Compass is live-streaming.
Mode LED - flashing - BLUE	The Compass is syncing files to the Drift Cloud service.
Mode LED - flashing rapidly for 5 seconds, then returning to previous mode colour.	There is a error connecting to the Drift Cloud service.

## Connecting the Camera

### Connecting to a PC

1. Connect the camera using the USB cable (provided). The camera MODE LED will flash RED.
2. The camera's folder may open automatically; if not, open My Computer
3. The camera should be recognised as a removable disk; double-click to open
4. Open the DCIM folder to access your files

### Connecting to a Mac

1. Connect the camera using the USB cable (provided). The camera MODE LED will flash RED.
2. The camera's folder may open automatically; if not, open Finder
3. The camera should be recognised as an external device; double-click to open
4. Open the DCIM folder to access your files

## Specifications

- Video Resolution: 1080p, 720p
- Photo Resolution: 12MP/8MP/5MP
- Broadcast Speed: 400Kbps / 800Kbps / 1.5Mbps
- File Format: .MP4 (H.264 codec)
- Sensor Type: CMOS
- Field of View (diagonal): 78° Optical FOV
- Lens Focal Range: 0.5 - ∞
- ISO Range: 10 - 6400
- Exposure: Auto centre weighted
- Microphone: Built-in mono, noise reducing microphone
- Built-in Memory: 256 MB NAND FLASH SLC/ 2Gb DDR2 SDRAM
- External Memory: Micro SD memory cards up to 32GB
- Connectivity: Micro USB 5 Pin (Type B Compliant) connector
- Compatibility: Windows XP and up / Mac OS 10.2 and up
- Remote Ready: Compatible with the Drift Bluetooth Remote Control
- Dimensions: 43 x 43 x 13.8mm (main unit)
- Unit Weight: 34 g
- Power: 750 mAH internal Battery
- Battery Life: 2 hours @ 1080P / 2.5 hours @ 720P

## Accessory Guide

### DRIFT COMPASS SKIN WITH MAGNETIC BACKS

The Magnet system embedded in the Skin allows extra protection, and versatile camera mounting with various interchangeable backs:



## Disclosures

**FCC Information**  
This requirement complies with Part 15 of the FCC Rules.

Operation is subject to the following two conditions:  
(1) this device may not cause harmful interference, and  
(2) this device must accept interference received, including interference that may cause undesired operation.

**WARNING**  
Changes or modifications to this unit not expressly approved by the party responsible for compliance could void the user's authority to operate the equipment.

The equipment has been tested and found to comply with the limits for a Class B digital device, pursuant to Part 15 of the FCC Rules. These limits are designed to provide reasonable protection against harmful interference in a residential installation. This equipment uses, and can radiate radio frequency energy and, if not installed and used in accordance with the instructions, may cause harmful interference to radio communications. However, there is no guarantee that interference will not occur in a particular installation. If this equipment does cause harmful interference to radio or television reception, which

can be determined by powering the equipment on and off, the user is encouraged to try to correct the interference by one or more of the following measures:

- Reorient or relocate the receiving antenna;
- Increase the separation between the equipment and the receiver;
- Connect the equipment into an outlet on a circuit different from that which the receiver is connected;
- Consult the dealer or an experienced radio / TV technician for help.

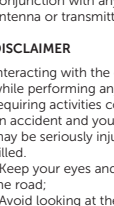
This device complies with Industry Canada license-exempt RSS standard(s).  
Operation is subject to the following two conditions:  
(1) this device may not cause interference, and  
(2) this device must accept any interference, including interference that may cause undesired operation of the device.  
This Class (B) digital apparatus complies with Canadian ICES-003.  
Son fonctionnement est soumis aux deux conditions suivantes:  
(1) cet appareil ne peut pas causer l'interférence, et  
(2) cet appareil doit accepter

de l'intervention, y compris l'intervention qui peut causer l'opération non désirée de.

Cet appareil numérique de la classe [B] est conforme à la norme NMB-003 du Canada. Cet appareil s'accorde avec licence-exempte RSS standard.  
**FCC RADIATION EXPOSURE**  
This requirement complies with FCC radiation exposure limits set forth for an uncontrolled environment. This equipment should be installed and operated with minimum distance 20cm between the radiator & your body.

**DISCLAIMER**  
Interacting with the camera while performing any focus requiring activities could cause an accident and you or others may be seriously injured or killed.  
· Keep your eyes and mind on the road;  
· Avoid looking at the camera for too long;  
· Stop the vehicle in a safe location before adjusting the camera.

### For the full accessory list visit:



[driftinnovation.com/compassaccessories](http://driftinnovation.com/compassaccessories)