



COMPASS

GETTING STARTED



GETTING STARTED



POWERING ON



Press and hold the front power button to start the device. The light will turn red while starting and green when ready for use.

You can switch camera mode by pressing the front power button. The indicator light will change depending on the mode.

To take a photo or to start/ stop a video or timelapse, simply double tap the front surface of the Compass.

- ◆ Video
- ◆ Photo
- ◆ Timelapse

WIFI INDICATOR & CONNECTIONS



Your Compass device can connect to your smartphone through a direct WiFi connection. To begin the process, press the WiFi button and follow the in-app directions.

You can charge your Compass, and transfer your content to your computer using the Micro USB port.

To remove your Micro SD card, gently press the card further into the SD card slot, the card will then be ejected.

CONNECTING TO YOUR PHONE



USING THE DRIFT LIFE APP TO CONTROL YOUR COMPASS

The Drift Life application is available on iOS and Android. Once installed you can use the application to connect and control your Compass.

STEP 1

Pressing the Wi-Fi button once, the side indicator will flash red while the Compass searches for your smartphone on its WiFi network.

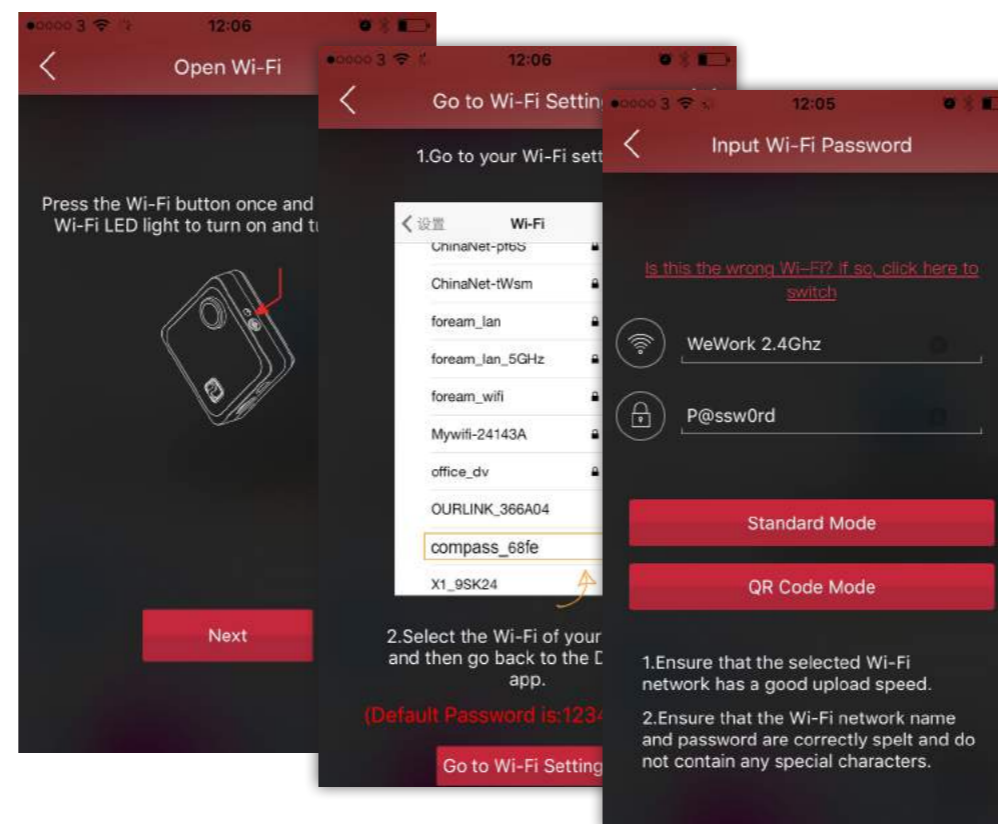
STEP 2

Through your phone settings, directly connect to the Compass WiFi. It will appear as an available network in your settings.

STEP 3

The front power button and the side indicator light will turn green. This indicates your Compass and your smartphone are now connected.

Default Wi-Fi Password: **1234567890**



LIVE STREAMING

From the Drift Life home screen you will find a **PLUS SYMBOL** in the bottom right corner. Tapping this icon will open the option to **BEGIN BROADCAST**, this requires you to connect your Compass to an internet-enabled WiFi signal. Follow instructions within the Drift Life application to begin.

