


H&G
RENOVATION SPECIAL
bungalow brilliance



BACKYARD The generous block was a big draw for homeowner Andrea Arendsen, pictured here with her son Christian. Landscape design by Mud Office, landscaping by Damon Fuhrer Landscapes. The path is made from bricks recycled from the build. Bluestone pavers (pool area). Shade umbrella and white lounger, Ikea. **Smart buy:** Adelphi outdoor dining setting, from \$2499, Freedom. *For Where to Buy, see page 187.*



FEATURE PLANTS

Magnolia grandiflora
'Greenback'

Lagerstroemia indica
'Natchez'

Weeping lilly pilly

New Zealand
rock lily
(*Arthropodium*
cirratum)

HG Sunlover turf
(*Festuca arundinacea*
'Sunlover')

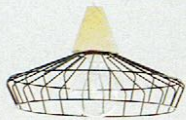
SLICE OF HEAVEN

For one Melbourne family, a novel approach to creating space delivered a home that's a cut above.

STORY *Stephen Craft* | STYLING *Julia Green* | PHOTOGRAPHY *Annette O'Brien*

This is the life

When space is the top priority, the temptation is to go all-out open plan, but Matthew and Andrea resisted. "We didn't want a completely open layout," says Andrea. "We prefer to have rooms we can each retreat to for alone time as well as areas where we can come together as a family." The 'incision' extension provided the space for a communal area downstairs and a teen retreat for the boys.



LIVING Oversize pivoting windows strengthen the connection to the garden. Windows by Pickering Joinery. Sofa, Domayne. Side table, Supply & Demand. Coffee table, Freedom. Pendant light, About Space. Fireplace, Real Flame. Joinery in Gunnersens Designer Ply (throughout). Hide rug, Ikea. Patchwork rug, Hali Handmade Rugs. Burnished-concrete flooring. Print from Milk & Sugar. **Smart buy:** Retro chair, \$499, Oz Design Furniture. **STAIRS** Alexander ascends the stairs to the boys' private domain. Perforated steel on the upper flight is a lovely textural contrast to the plywood on the lower stairs. For *Where to Buy*, see page 187.



Like many home makeovers, Andrea and Matthew Arendsen's renovation was sparked by a need for more space. Their updated single-storey terrace in Melbourne's south-east was much loved, but as their sons Alexander, now 16, and Christian, 10, grew, it was simply too squeezey. Reluctantly, the couple sold up, planning to rent until a suitable house presented itself.

As luck would have it, a 1920s red-brick bungalow came up for sale just a few kilometres away. In almost original condition, it presented an opportunity to extend into the comfortable family home the Arendsens were after. "We were hooked from the first inspection," says Andrea, who was captivated by the leafy street as well as the generosity of the 687m² site. They turned to architect Albert Mo, director of Architects EAT, with whom they had enjoyed working on their previous renovation.

The structure was sound so Albert and his team were able to rework what they had, a big plus for the budget. At the front of the home, a small bedroom next to the main bedroom was repurposed as an ensuite and an adjacent enclosed porch as a walk-in wardrobe. The existing living room was converted into a dining room, the kitchen became an internal courtyard, and a new open-plan kitchen/living room was added at the rear.

A smart Corian-topped island bench is the star of the new kitchen. Tucked behind a wall of storage is a butler's pantry, the laundry and a media nook that is used for household admin. On the eastern wall, a servery window opens to a poolside dining zone - a boon when entertaining. ▶



◀ Arudimentary lean-to at the rear of the house was demolished and replaced by a two-storey extension with a striking 6.4m-high 'incision'. Clad in fibre cement, the incision features full-height panels of glass (including an operable window) as well as a glass roof over an internal void. "The glazing was crucial," says Albert. "Getting light into the core of the home was pivotal to the design, and that required some consideration given the site is oriented east-west." Andrea says she loves the complexity of the extension: "We didn't want a simple glass box tacked onto the back of the house".

A perforated-steel staircase leads to the first floor via a walkway suspended above the new living room. Upstairs is the boys' domain: two bedrooms, a shared bathroom and a family room with views over the pool and garden.

Connecting the home to the garden, designed by landscape architect Mira Martinazzo of Mud Office, formed an important part of Andrea and Matthew's brief to Architects EAT. "The

GIVEN THE SITE IS ORIENTED EAST-WEST, GETTING LIGHT INTO THE CORE OF THE HOME TOOK SOME CONSIDERATION.

garden means a lot to the family so we wanted to create unimpeded sight lines to the outdoors from every room in the house," says project architect Sarah Magennis, who worked closely with Albert. To achieve this, the architects employed picture windows and both sliding and pivoting doors. Some doors, such as those adjoining the north-facing deck and courtyard, can be opened right up to the kitchen/living area to create one seamless space.

To further blur the division between indoors and out, the staircase to the first floor extends beyond the building line. Painted a zesty lime green on the underside, it provides visual interest too.

The Arendsens are delighted with their new abode, but have found one drawback.

"We've become more reluctant to go away for holidays," says Andrea. "With everything we have here, why would we?" ▶

Architects EAT, Collingwood, Victoria; 1300 360 382 or www.eatas.com.au. Mud Office, Clifton Hill, Victoria; 0412 534 987 or www.mudoffice.com.au.

THE PALETTE

Dulux Vivid White
interior, throughout

Dulux Sunny Green
stairs, exterior

Dulux Klute
exterior cladding

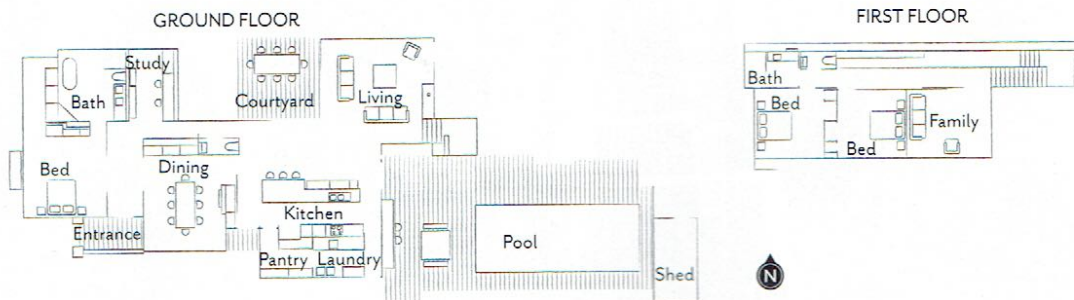


Paint colours are reproduced as accurately as printing processes allow.

KITCHEN *this page and opposite left* Oodles of storage and a butler's pantry are a dream come true for keen cook Andrea. Corian benchtops in Cirrus White. Joinery in Laminex Parchment. Edward wall lamp, Domus. Replica Tolix stools, Kmart. Splashback tiles, Bespoke Tile & Stone. Teknobili Flag pull-out sink mixer, Reece. Fridge, Westinghouse. Dishwasher, Miele. Artwork by Emma Webb. **DINING** Rather than a dining zone within the open-plan extension, the couple opted for a separate but connected dining room. Table, Bay Leather Republic. Replica Eames chairs, Matt Blatt. Painting by Emma Webb (left). Print from Milk & Sugar (over mantel). Hide rug, The Industrial Revolution. Europlank engineered-timber flooring, Havwoods (throughout). **Smart buy:** Boråstapeter Scandinavian Designers 2735 wallpaper, \$135/10m roll, Radford. *For Where to Buy, see page 187.*



THE LAYOUT



MAIN BEDROOM Vintage cinema seating found at a second-hand store proved the perfect fit for the bay window. Bally print bought in Armadale. The couple has owned the rug for years. Sunraysia pendant light, Beacon Lighting. **ENSUITE** “We used the Tasmanian-oak battens to define the bath area and bring warmth to the room,” says Sarah. Beatrice wall/floor tiles, Massa Imports. Bandini Curved Natural stool, Oz Design Furniture. **Smart buy:** Posh Solus 1780 freestanding bath, \$1069, and Sussex Scala Curved wall bath/spa set taps and spout, \$642, all Reece. **SERVERY** A deep frame of perforated steel wrapped around the kitchen window functions as both awning and bench. Replica Tolix stools, Kmart. *For Where to Buy, see page 187.*

H&G
RENOVATION SPECIAL
heritage update

DINING A painting by Minnie Pwerle presides over the space. The Sol Shapiro credenza is a piece Zorita's parents commissioned in the 1960s. Screenwood acoustic ceiling. Dining chairs, Bontempi. Pendant light, Space. Platter on table by Gunther Weiss.

FORMAL LIVING Owners Alan and Zorita in their airy, art-filled home. Coffee table, Natuzzi. Print by Shinichi Maruyama. Seed Cloud pendant light, Ochre. The floor is limewashed oak.

For Where to Buy, see page 187.

