

UNDERSTANDING MAYCO WASHES

– An Introductory Guide –



MaycoColors.com



Mayco's Washes are a multi-purpose product with limitless possibilities. These Washes can be used alone for staining techniques, applied with decorating accessories such as stamps and silkscreens, or layered with any glaze from cone 06 to cone 10 and everywhere in between! They are beautiful in oxidation, or reduction, and can be utilized to expand the palette of the artist or teacher.

Mayco Washes are a highly concentrated metallic glaze colorants, which are formulated for ease of use and versatility. Each Wash uses, as the main ingredient, a commonly used oxide: Iron, Rutile, Manganese, Copper, or Cobalt. These are very typical glaze materials and are likely found in your favorite glazes already!

FOOD & DINNERWARE SAFETY

Mayco Washes are a mixture of AP Non-Toxic and CL (Health Caution) label, which is in regards to the wet glaze. Please review the label for the individual color's health classification and any appropriate warnings. All of the glazes in the Washes line are Food Safe, according to FDA standards but are not suitable for Dinnerware Safety unless used in combination with another glaze that creates a sealed and chemically durable finish.

There is a factor of personal discretion when considering the use of any glaze on a surface that comes in contact with food. Some factors such as clay body, firing temperature, firing atmosphere, and the layering of glazes also contribute to the suitability of a ware for dinnerware use. It is the responsibility of the customer to practice practical consideration of these factors and observe how they affect the final fired surface. For more information about Food Safe and Dinnerware Safe guidelines check here:

MaycoColors.com/resources/dinnerware-food-safety/

What is the best way to apply Mayco's Washes?

Washes can be applied alone, as a body stain, antiqued over texture, and layered both over and under other glazes. We recommend shaking for 5-6 seconds before use. This will help evenly disperse the raw materials in the wash. For all-over coverage: brush on 1 to 2 coats. Washes are concentrated, so if you would like more staining and less coverage, simply add water and mix only the amount you need to use in one session. Can be fired from cone 06 to cone 9/10. Washes can be applied to greenware and bisque. The choice of clay body, the thickness of glaze application, firing process and temperature will affect the fired results. Always test in your kiln, on your clay body.

HELPFUL HINTS:

- Color change is an effect caused by the ingredients in your glaze and the wash. Each unique glaze will interact differently with each wash.
- Applying a clear glaze can lessen the appearance of body staining.
- The choice of clay body, thickness of glaze application, firing process and temperature will affect the fired results. Always test in your kiln, on your clay body.

- Applying Mayco's Washes as a wash, antique or body stain will not stick to your kiln shelf. We do not recommend applying a full strength coat to the bottom of you ware as it may flux and adhere to the shelf.

WAYS TO USE MAYCO WASHES:

- **Tinting**
Use wash to tint an existing glaze, slip or Underglaze by mixing them before application.
- **As a stain**
All Mayco Washes "stay put" when staining. Apply a thinned version of the wash to a bisque fired piece. Allow the stain to get into all the low spots and allow to dry. The formulation of the wash will help it stick to the piece more effectively than a wash you may mix up in the studio. After the piece is dry, use a damp sponge to lightly wipe the wash; removing it from the high points and allowing it to remain in the low points. You can fire without glazing or you can apply a translucent glaze that is appropriate for your preferred firing temperature (cone06-cone10) to seal the surface. Applying a glaze may reduce the appearance of body staining. This staining technique is especially nice for textured ware and will emphasize the tactile texture of the piece.
- **Layer with other glazes**
Mayco's Washes are an extremely versatile product that can stretch your palette. Use Washes over or under one or more of your favorite Mayco Stoneware or Elements glazes. Utilize different techniques to create interesting patterns and reactions! They can be layered using a brush, stamps, slip trailers, silk screens, and any other fun technique that you can think up. Don't hesitate to experiment! The front cover sample features Washes applied using a slip trailer with Stoneware and Stroke & Coat glazes fired to cone 6.
- **With a decorating accessory**
Washes can be used in design work. They can be mixed with AC-310 Silkscreen Medium for silkscreens and used with brushes and stamps to create uniquely designed surfaces. However, sometimes even if a glaze is stable, there can be some blurring of the lines when the glaze is applied thick and it is fired in a vertical orientation.
- **Create a Dendritic Slip**
As seen in Mochaware, a dendritic slip often uses vinegar and tobacco to create diffusion between the materials when applied to a wet Underglaze or Engobe. Mayco's SW-301 Iron Wash can be used to color the dendritic slip.



Sample chips are applied at full coverage and wiped/sponged off over textured portion. Fired flat on white earthenware or stoneware body.

SW-301 IRON WASH



Cone 06 Oxidation

Fires to an opaque rust red with a slight sheen when applied fully concentrated. This product will leave red body staining when wiped away. Little to no movement when used alone or in combination.



Cone 6 Oxidation

Fires to an opaque deep rust red with a slight sheen when applied fully concentrated. This product will leave red body staining when wiped away. Little to no movement when used alone or in combination.



Cone 10 Reduction

Color darkens; finish, mobility, and body staining remain the same.

IN COMBINATION

When using in combination, apply a transparent and stable glaze such as a celadon or clear glaze to ensure stability in performance and maintaining details. Iron Wash can be layered with other glazes to promote interactions, and does not add much movement to combinations. If you use it in a brushstroke, (either over or under a glaze) you can create contrast and depth in the glaze, sometimes producing a new color.

WAYS TO USE

- Use it by itself as a stain.
- Layer with other glazes.
- Apply with a decorating accessory.

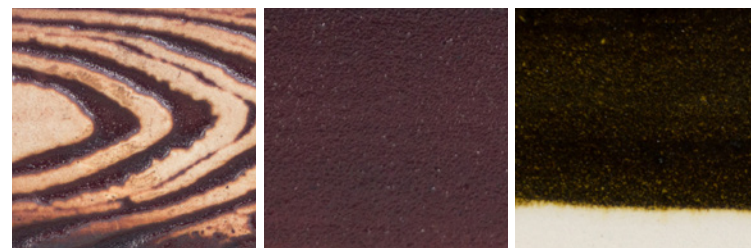
ADDITIONAL PHOTOS

Cone 06



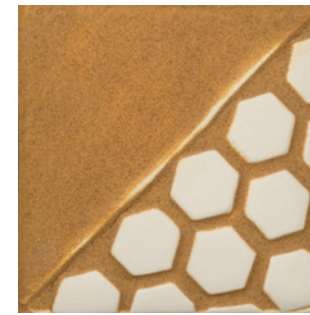
One coat wiped back One coat wiped back under clear glaze
(S-2101 Crystal Clear Brushing)

Cone 6



One coat wiped back One coat full strength One coat under clear glaze
(SW-001 Clear)

SW-302 RUTILE WASH



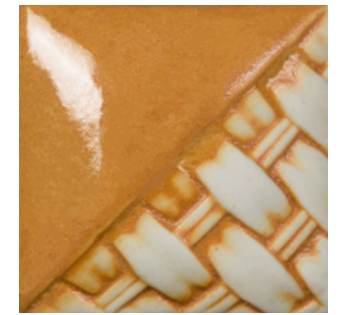
Cone 06 Oxidation

Fires to an opaque mustard yellow with a dry finish. Little to no movement when used alone or in combination.



Cone 6 Oxidation

Fires to an opaque pale burnt orange with a smooth matte finish. Little to no movement when used alone or in combination.



Cone 10 Reduction

No change from cone 6 sample.

IN COMBINATION

When using in combination, apply a transparent and stable glaze such as a celadon or clear glaze to ensure stability in performance and maintaining details. Can be layered with other glazes to promote interactions and does not add much movement to combinations.

WAYS TO USE

- Use it by itself as a stain.
- Layer with other glazes.
- Apply with a decorating accessory.

ADDITIONAL PHOTOS

Cone 06



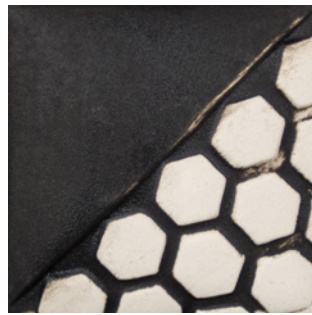
One coat wiped back One coat wiped back under clear glaze
(S-2101 Crystal Clear Brushing)

Cone 6



One coat wiped back One coat full strength One coat under clear glaze
(SW-001 Clear)

SW-303 MANGANESE WASH



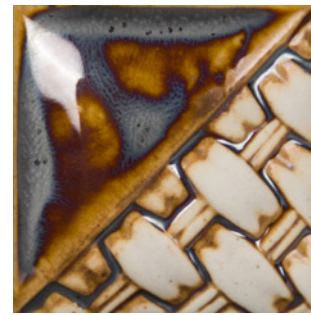
Cone 06 Oxidation

Fires to a dark brown with a dry finish and slight sheen. Little to no movement when used alone or in combination.



Cone 6 Oxidation

Fires to a warm metallic finish that breaks brown over texture. Can add mobility when layered with glaze(s).



Cone 10 Reduction

No change from cone 6 sample.

IN COMBINATION

When used in combination, Manganese Wash will add some brown variation and movement to the glaze(s). The amount of mobility produced when using Manganese Wash in combination is dependent upon how much of each product was applied; how many coats of each and how many different products are being used; and the performance of the glaze it is being paired with. For example, layering Manganese Wash with a glossy glaze that breaks over texture will create more movement than layering it with an opaque matte glaze. We recommend only applying Manganese Wash to the top 2/3 of a piece when layering with other glazes because of the movement produced when layering. It works great when applied with a brush around the rim of a piece or applied with a glaze trailer in a pattern. Manganese Wash used with low fire glazes create interesting raised crater-like textures when fired to cone 06 (it will also move a bit at low fire temperatures).

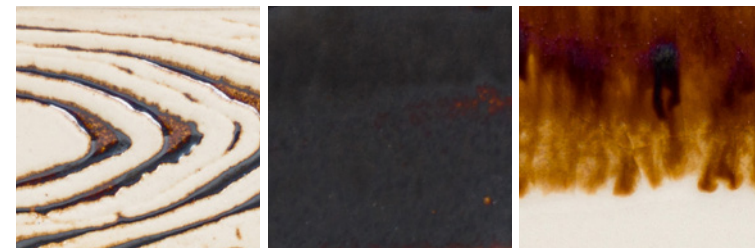
ADDITIONAL PHOTOS

Cone 06



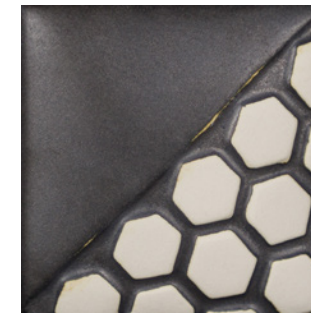
One coat wiped back One coat wiped back under clear glaze
(S-2101 Crystal Clear Brushing)

Cone 6



One coat wiped back One coat full strength One coat under clear glaze
(SW-001 Clear)

SW-304 COPPER WASH



Cone 06 Oxidation

Fires to a dark gray with a dry finish and leaves green body staining. Little to no movement when used alone or in combination.



Cone 6 Oxidation

Fires to a matte metallic finish that breaks green over texture. Can add mobility when layered with glaze(s).



Cone 10 Reduction

Red variation occurs in heavy reduction. Can produce texture. Can add mobility when layered with glaze(s).

IN COMBINATION

When used in combination, Copper Wash will add some green variation and movement to the glaze(s). The amount of mobility produced when using Copper Wash in combination is dependent upon how much of each product was applied; how many coats of each and how many different products are being used; and the performance of the glaze it is being paired with. For example, layering Copper Wash with a glossy glaze that breaks over texture will create more movement than layering it with an opaque matte glaze. We recommend only applying Copper Wash to the top 2/3 of a piece when layering with other glazes because of the movement produced when layering. It works great when applied with a brush around the rim of a piece or applied with a glaze trailer in a pattern.

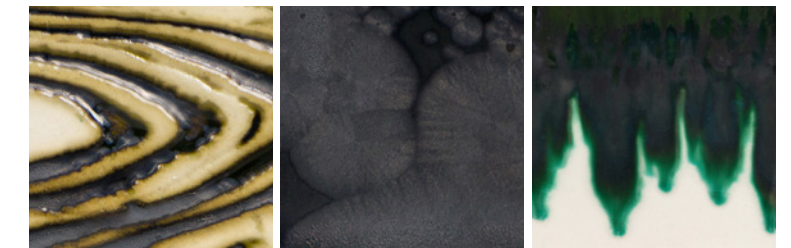
ADDITIONAL PHOTOS

Cone 06



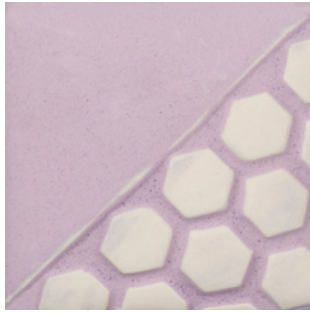
One coat wiped back One coat wiped back under clear glaze
(S-2101 Crystal Clear Brushing)

Cone 6



One coat wiped back One coat full strength One coat under clear glaze
(SW-001 Clear)

SW-305 COBALT WASH



Cone 06 Oxidation

Fires to lavender with a dry finish. Little to no movement when used alone or in combination.



Cone 6 Oxidation

Copper Wash fires to a matte metallic finish that breaks green over texture. Can add mobility when layered with glaze(s).



Cone 10 Reduction

Color darkens; showcases black/navy metallic. Can add mobility when layered with glaze(s).

IN COMBINATION

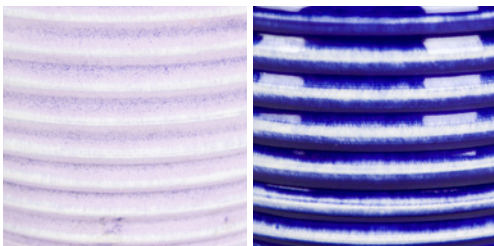
When used in combination, Cobalt Wash will add blue variation and some movement to the glaze(s). The amount of mobility produced when using Cobalt Wash in combination is dependent upon how much of each product was applied; how many coats of each and how many different products are being used; and the performance of the glaze it is being paired with. For example, layering Cobalt Wash with a glossy glaze that breaks over texture will create more movement than layering it with an opaque matte glaze. It also works great when applied with a brush around the rim of a piece or applied with a glaze trailer in a pattern.

WAYS TO USE

- Use it by itself as a stain.
- Layer with other glazes.
- Apply with a decorating accessory.

ADDITIONAL PHOTOS

Cone 06



One coat wiped back

One coat wiped back under clear glaze

(S-2101 Crystal Clear Brushing)

Cone 6



One coat wiped back

One coat full strength

One coat under clear glaze

(SW-001 Clear)