



# Stoneware Combo

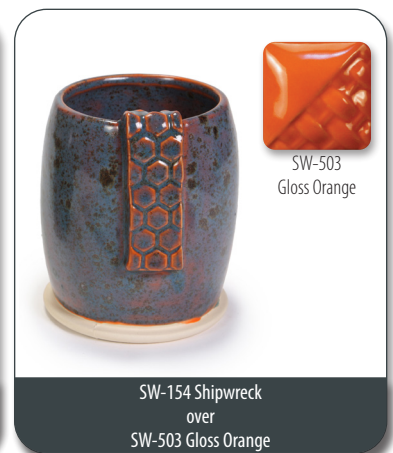
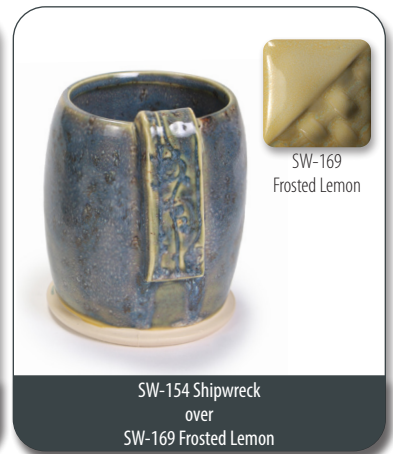
## SW-154 SHIPWRECK



SW-154  
Shipwreck

CONE 6

Technique was achieved by brushing on two (2) layers of base glaze.  
Then apply two (2) layers of (SW-154 Shipwreck), letting glazes dry between coats.



Vases shown are fired to Cone 6 on White Stoneware body.



MaycoColors.com





# Stoneware Combo

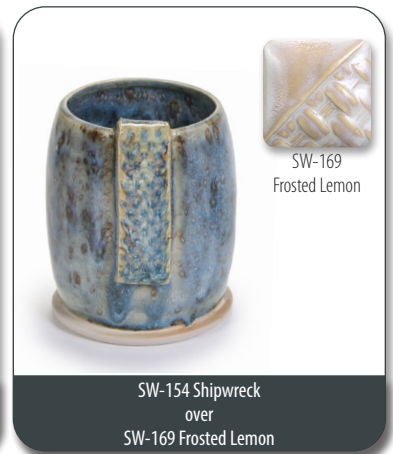
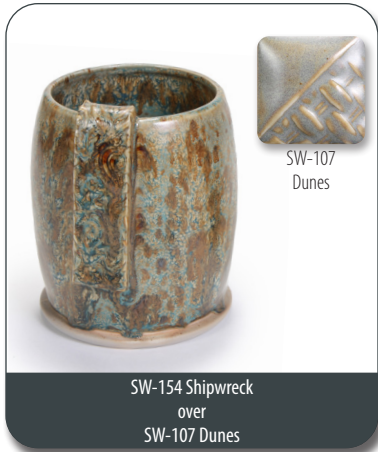
## SW-154 SHIPWRECK



SW-154  
Shipwreck

CONE 10

Technique was achieved by brushing on two (2) layers of base glaze.  
Then apply two (2) layers of (SW-154 Shipwreck), letting glazes dry between coats.



Vases shown are fired to Cone 10 on White Stoneware body.



MaycoColors.com

