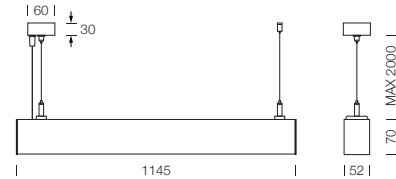


PROJECT : _____
SALE : _____

Lampitude

Product

Dimension



Specification

SERIES	: UD-LINK
ITEM CODE	: UD-LINK-AU-P120-SM12212T-2.7K-5.7K-TW-WH
DESCRIPTION	: LINEAR HANGING LAMP
SIZE	: W1145 X L52 X H70+2000 (MM)
INSTALLATION	: SURFACE MOUNTED BASE
DRILL SIZE	: -
WEIGHT	: 3 KG
MATERIAL	: EXTRUDED ALUMINIUM
COLOR	: WHITE
REFLECTOR	: -
DIFFUSER	: OPAL POLYCARBONATE
IP RATING	: 20
LIGHT SOURCES	: LED BUILT-IN
SOCKET	: -
WATTS	: UP 22W / DOWN 22W
INPUT VOLTAGE	: 220-240Vac 50/60Hz
AMBIENT TEMPERATURE	: -20°C~45°C
CCT	: 2700 - 5700K
CRI	: >90
BEAM ANGLE	: 100°
LUMEN POWER	: UP 1800LM - 2150LM / DOWN 1800LM - 2150LM
LIFETIME	: 50,000 Hrs
CONTROL GEAR	: LED DRIVER INCLUDED
ACCESSORIES	: BLUETOOTH TO DMX , CENTRE FEED CONNECTOR , PC DIFFUSER
REMARKS	: -

Head office 299/1 (Ekamai) Klongton-Nua, Wattana, Bangkok Thailand 10110

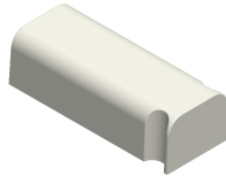
Tel (02) 392 6371-5 FAX (02) 392 1839 Email info@lamptitude.net www.lamptitude.com

PROJECT : _____

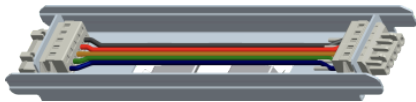
SALE : _____

Lampitude

Optional Accessories



CGCT-UD-LINK-AU-CONTROLLER-LNBLDMX05-CX-LT
Bluetooth to DMX
CCT Tunable+Dimmable
Wireless Module
Input:100-240V ac
Rated Power:<3W



SPAC-UD-LINK-AU-CONNECTOR-PT0046
Centre feed Connector
16A 250V



SPAC-UD-LINK-AU-DIFFUSER-PT0048-10M
PC Diffuser
10m /Reel length

Head office 299/1 (Ekamai) Klongton-Nua, Wattana, Bangkok Thailand 10110

Tel (02) 392 6371-5 FAX (02) 392 1839 Email info@lamptitude.net www.lamptitude.com