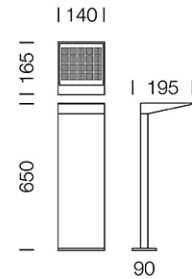
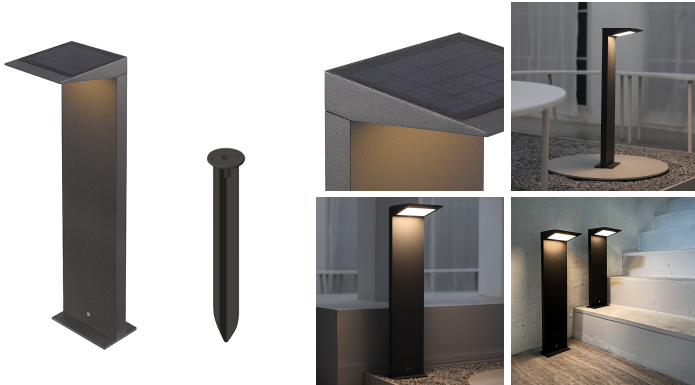


PROJECT : \_\_\_\_\_  
SALE : \_\_\_\_\_

# Lampitude

## Product

## Dimension



## Specification

<b>SERIES</b>	: TRIN
<b>ITEM CODE</b>	: TRIN3-B65-BK
<b>DESCRIPTION</b>	: SOLAR CELL BOLLARD LAMP
<b>SIZE</b>	: W140 X L165 X H650 (MM)
<b>INSTALLATION</b>	: STANDING LAMP
<b>DRILL SIZE</b>	: -
<b>WEIGHT</b>	: 2.2 KG
<b>MATERIAL</b>	: DIE-CAST ALUMINUM, SILICON RUBBER GASKET
<b>COLOR</b>	: DARK GRAY
<b>REFLECTOR</b>	: -
<b>DIFFUSER</b>	: CLEAR PC
<b>IP RATING</b>	: 54
<b>LIGHT SOURCES</b>	: LED SOLAR PANEL
<b>SOCKET</b>	: 1 X 2200 mAh LITHIUM BATTERY, CHARGE : 6-8 HOUR (SUNSHINE)
<b>WATTS</b>	: 2W
<b>CCT</b>	: 3000K
<b>CRI</b>	: 85
<b>BEAM ANGLE</b>	: 143LM
<b>LUMINOUS FLUX</b>	: 68°
<b>ACCESSORIES</b>	: PLASTIC SPIKE INCLUDED
<b>REMARKS</b>	: WORK TIME 100% OF LIGHT 2.5-3 HOUR, 15% Of LiGHTT 20-25 HOUR

Head office 299/1 (Ekamai) Klongton-Nua, Wattana, Bangkok Thailand 10110

Tel (02) 392 6371-5 FAX (02) 392 1839 Email info@lamptitude.net www.lamptitude.com