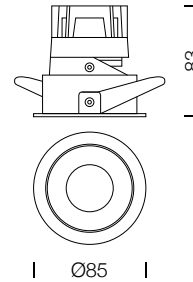
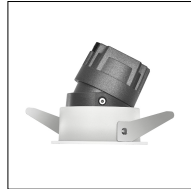
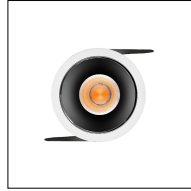
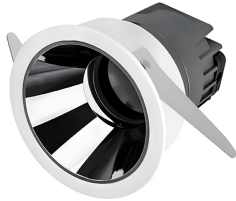


PROJECT : _____
SALE : _____

Lampitude

Product

Dimension



Specification

SERIES	: STRO
ITEM CODE	: STRO-10W-36D-3500K-WW
DESCRIPTION	: RECESSED DOWNLIGHT
SIZE	: Ø85 X H83 (MM)
INSTALLATION	: RECESSED MOUNTED
DRILL SIZE	: Ø75 (MM)
WEIGHT	: 0.24 KG
MATERIAL	: ALUMINIUM
COLOR	: WHITE
REFLECTOR	: -
DIFFUSER	: -
IP RATING	: 20
LIGHT SOURCES	: LED COB
WATTS	: 10W
INPUT VOLTAGE	: AC 220-240V 50/60 Hz
OUTPUT VOLTAGE	: -
CCT	: 3500K
CRI	: >90
BEAM ANGLE	: 36°
LUMEN POWER	: 1000LM
AMBIENT TEMP	: -
LIFETIME	: 35,000 Hrs
CONTROL GEAR	: NON-DIM LED DRIVER INCLUDED
ACCESSORIES	: -
REMARKS	: -

Head office 299/1 (Ekamai) Klongton-Nua, Wattana, Bangkok Thailand 10110

Tel (02) 392 6371-5 FAX (02) 392 1839 Email info@lamplitude.net www.lamplitude.com