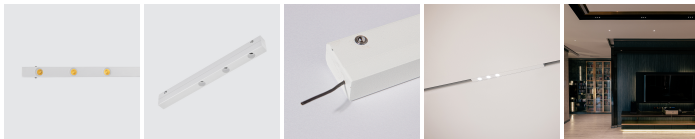
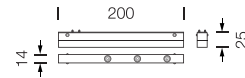


PROJECT : _____
SALE : _____

Lampitude

Product

Dimension



Specification

SERIES	: ST-SXS06
ITEM CODE	: ST-SXS06-3-BT-5W-3000K-WH
DESCRIPTION	: MAGNETIC TRACK LIGHT
SIZE	: W200 X L14 X H25 (MM)
INSTALLATION	: RECESSED MOUNTED
DRILL SIZE	: -
WEIGHT	: 0.126 KG
MATERIAL	: ALUMINUM , LED LENS
COLOR	: WHITE
REFLECTOR	: -
DIFFUSER	: -
IP RATING	: 20
LIGHT SOURCES	: SMD LED
SOCKET	: -
WATTS	: 5W
VOLTAGE	: DC 24V
CCT	: 3000K
CRI	: ≥95
BEAM ANGLE	: 24°
LUMEN POWER	: 540LM
LIFETIME	: 35,000 Hrs
CONTROL GEAR	: LED DRIVER INCLUDED
ACCESSORIES	: -
REMARKS	: DIMMABLE

Head office 299/1 (Ekamai) Klongton-Nua, Wattana, Bangkok Thailand 10110

Tel (02) 392 6371-5 FAX (02) 392 1839 Email info@lamplitude.net www.lamplitude.com