

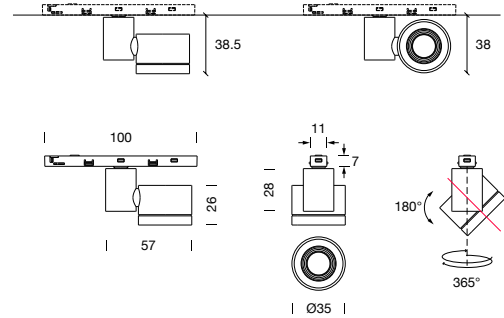
PROJECT : \_\_\_\_\_  
 SALE : \_\_\_\_\_

# Lampitude

## Product



## Dimension



## Specification

<b>SERIES</b>	: MINI-TRACK
<b>ITEM CODE</b>	: MINI-TRACK-LO35-4.5W-28D-3000K-WH
<b>DESCRIPTION</b>	: MINI TRACK LIGHT
<b>SIZE</b>	: Ø35 X H38.5 (MM)
<b>INSTALLATION</b>	: TRACK MOUNTED
<b>DRILL SIZE</b>	: -
<b>WEIGHT</b>	: 0.07 KG
<b>MATERIAL</b>	: ALUMINUM , PC
<b>COLOR</b>	: WHITE
<b>REFLECTOR</b>	: -
<b>DIFFUSER</b>	: -
<b>IP RATING</b>	: 20
<b>LIGHT SOURCES</b>	: LED COB
<b>SOCKET</b>	: -
<b>WATTS</b>	: 4.5W
<b>INPUT VOLTAGE</b>	: DC 48V
<b>CCT</b>	: 3000K
<b>CRI</b>	: >90
<b>BEAM ANGLE</b>	: 28°
<b>LUMEN POWER</b>	: 256 LM
<b>LIFETIME</b>	: 35,000 Hrs
<b>CONTROL GEAR</b>	: -
<b>ACCESSORIES</b>	: -
<b>REMARKS</b>	: TRACK NOT INCLUDED

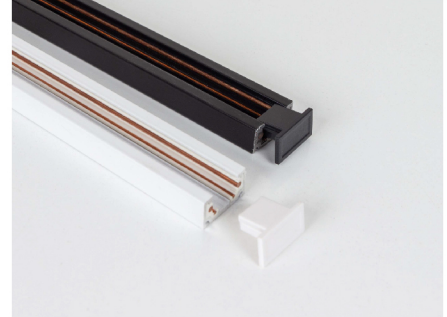
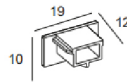
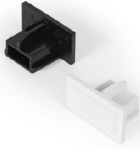
Head office 299/1 (Ekamai) Klongton-Nua, Wattana, Bangkok Thailand 10110

Tel (02) 392 6371-5 FAX (02) 392 1839 Email info@lamptitude.net www.lamptitude.com

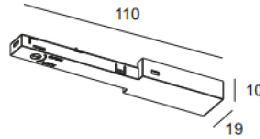
PROJECT : \_\_\_\_\_  
SALE : \_\_\_\_\_

# Lampitude

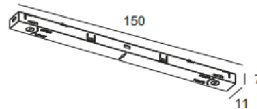
## Accessories



**DESCRIPTION** END CAP  
**ITEM CODE** MINI-TRACK-END-CP-BK (สีดำ) / MINI-TRACK-END-CAP-WH (สีขาว)  
**REMARK** 2 PCS/ SET (NEED THIS PART)



**DESCRIPTION** ELECTRICAL FEEDER PART  
**ITEM CODE** MINI-TRACK-FEEDER-BK (สีดำ) / MINI-TRACK-FEEDER-WH (สีขาว)  
**REMARK** WITH 45 CM. CABLE (NEED THIS PART)



**DESCRIPTION** LINEAR TRACK CONNECTOR  
**ITEM CODE** MINI-TRACK-I-LINEAR-BK (สีดำ) / MINI-TRACK-I-LINEAR-WH (สีขาว)  
**REMARK** NEED FOR STRAIGHT CONNECT

Head office 299/1 (Ekamai) Klongton-Nua, Wattana, Bangkok Thailand 10110

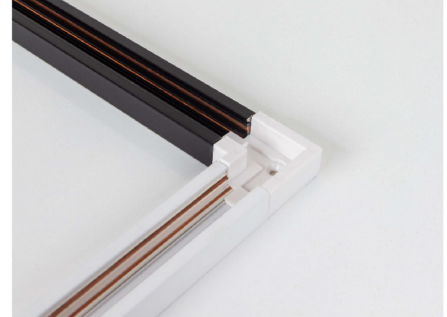
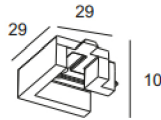
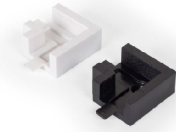
Tel (02) 392 6371-5 FAX (02) 392 1839 Email info@lamplitude.net www.lamplitude.com

PROJECT : \_\_\_\_\_

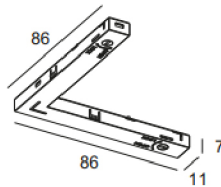
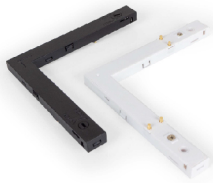
SALE : \_\_\_\_\_

# Lampitude

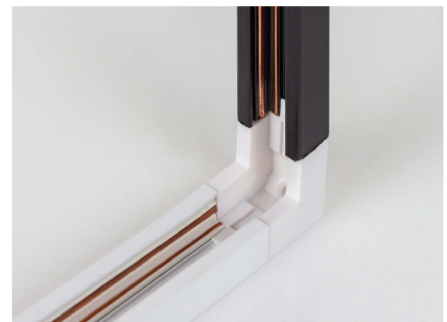
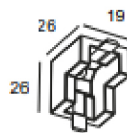
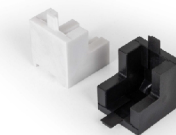
## Accessories



**DESCRIPTION** L CONNECTOR FIXING PART  
**ITEM CODE** MINI-TRACK-L-CONNECTOR-BK (สีดำ) / MINI-TRACK-L-CONNECTOR-WH (สีขาว)  
**REMARK** USE WITH MINI-TRACK-L-LINEAR



**DESCRIPTION** L CONNECTOR  
**ITEM CODE** MINI-TRACK-L-LINEAR-BK (สีดำ) / MINI-TRACK-L-LINEAR-WH (สีขาว)  
**REMARK** USE WITH MINI-TRACK-L-CONNECTOR



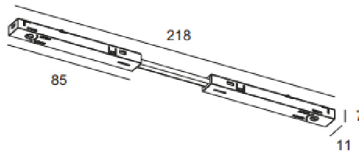
**DESCRIPTION** VERTICAL CORNER CONNECTOR FIXING PART  
**ITEM CODE** MINI-TRACK-V-CONNECTOR-BK (สีดำ) / MINI-TRACK-V-CONNECTOR-WH (สีขาว)  
**REMARK** USE WITH MINI-TRACK-V-LINEAR

Head office 299/1 (Ekamai) Klongton-Nua, Wattana, Bangkok Thailand 10110

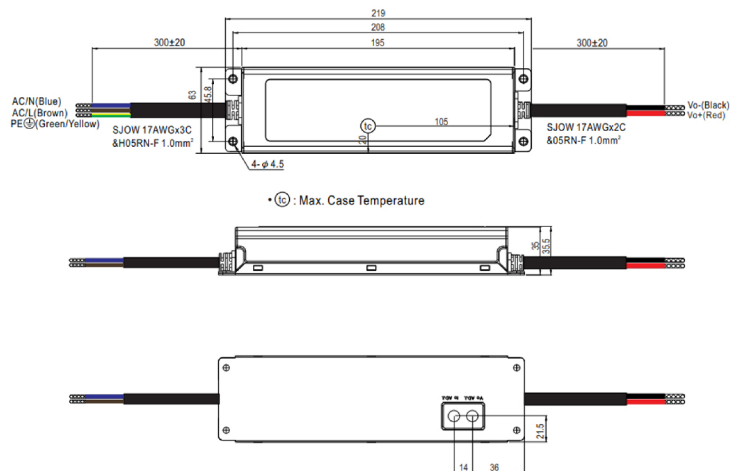
Tel (02) 392 6371-5 FAX (02) 392 1839 Email info@lamptitude.net www.lamptitude.com

PROJECT : \_\_\_\_\_  
 SALE : \_\_\_\_\_

## Accessories



**DESCRIPTION** L CONNECTOR FIXING PART  
**ITEM CODE** MINI-TRACK-L-CONNECTOR-BK (สีดำ) / MINI-TRACK-L-CONNECTOR-WH (สีขาว)  
**REMARK** USE WITH MINI-TRACK-L-LINEAR



<b>DESCRIPTION</b>	POWER SUPPLY	<b>HARMONIC (THD)</b>	<20%
<b>ITEM CODE</b>	CGPS-ELG-150W-48A-MW	<b>INPUT VOLTAGE</b>	AC 100-305V , 47-63 Hz
<b>WEIGHT</b>	0.95 KG	<b>OUTPUT VOLTAGE</b>	DC 48V
<b>MATERIAL</b>	METAL	<b>OUTPUT CURRENT</b>	3.13A
<b>IP RATING</b>	IP65	<b>AMBIENT TEMPERATURE</b>	40°C to 55°C
<b>RATED POWER</b>	MAX 150W	<b>LIFE TIME</b>	35,000 - 50,000 Hrs
<b>POWER FACTOR (PF)</b>	0.9		