

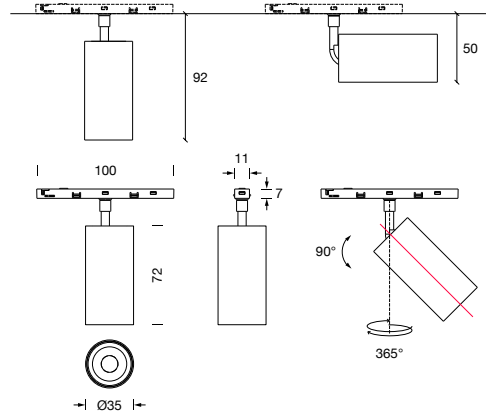
PROJECT : \_\_\_\_\_  
SALE : \_\_\_\_\_

# Lampitude

## Product



## Dimension



## Specification

<b>SERIES</b>	: MINI-TRACK
<b>ITEM CODE</b>	: MINI-TRACK-35-8W-37D-3000K-WH
<b>DESCRIPTION</b>	: MINI TRACK LIGHT
<b>SIZE</b>	: Ø35 X H92 (MM)
<b>INSTALLATION</b>	: TRACK MOUNTED
<b>DRILL SIZE</b>	: -
<b>WEIGHT</b>	: 0.11 KG
<b>MATERIAL</b>	: ALUMINUM , PC
<b>COLOR</b>	: WHITE
<b>REFLECTOR</b>	: -
<b>DIFFUSER</b>	: -
<b>IP RATING</b>	: 20
<b>LIGHT SOURCES</b>	: LED COB
<b>SOCKET</b>	: -
<b>WATTS</b>	: 8W
<b>INPUT VOLTAGE</b>	: DC 48V
<b>CCT</b>	: 3000K
<b>CRI</b>	: >90
<b>BEAM ANGLE</b>	: 37°
<b>LUMEN POWER</b>	: 578 LM
<b>LIFETIME</b>	: 35,000 Hrs
<b>CONTROL GEAR</b>	: -
<b>ACCESSORIES</b>	: -
<b>REMARKS</b>	: TRACK NOT INCLUDED

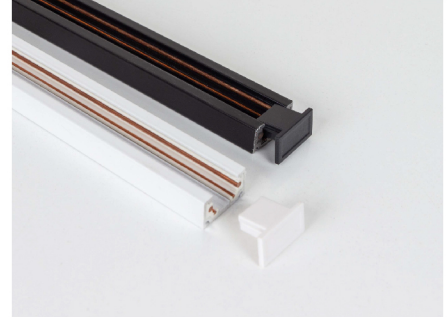
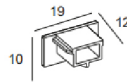
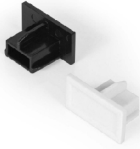
Head office 299/1 (Ekamai) Klongton-Nua, Wattana, Bangkok Thailand 10110

Tel (02) 392 6371-5 FAX (02) 392 1839 Email info@lamplitude.net www.lamplitude.com

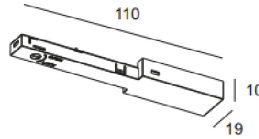
PROJECT : \_\_\_\_\_  
SALE : \_\_\_\_\_

# Lampitude

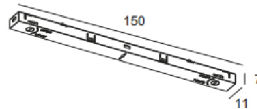
## Accessories



**DESCRIPTION** END CAP  
**ITEM CODE** MINI-TRACK-END-CP-BK (สีดำ) / MINI-TRACK-END-CAP-WH (สีขาว)  
**REMARK** 2 PCS/ SET (NEED THIS PART)



**DESCRIPTION** ELECTRICAL FEEDER PART  
**ITEM CODE** MINI-TRACK-FEEDER-BK (สีดำ) / MINI-TRACK-FEEDER-WH (สีขาว)  
**REMARK** WITH 45 CM. CABLE (NEED THIS PART)



**DESCRIPTION** LINEAR TRACK CONNECTOR  
**ITEM CODE** MINI-TRACK-I-LINEAR-BK (สีดำ) / MINI-TRACK-I-LINEAR-WH (สีขาว)  
**REMARK** NEED FOR STRAIGHT CONNECT

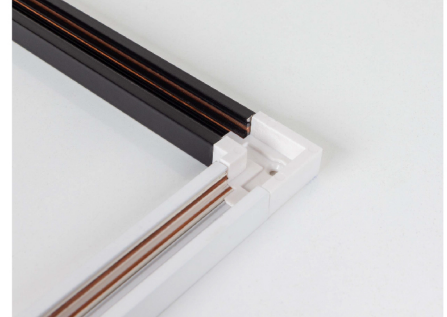
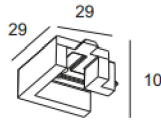
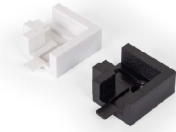
Head office 299/1 (Ekamai) Klongton-Nua, Wattana, Bangkok Thailand 10110

Tel (02) 392 6371-5 FAX (02) 392 1839 Email info@lamptitude.net www.lamptitude.com

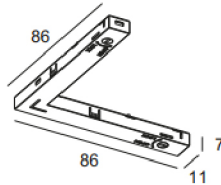
PROJECT : \_\_\_\_\_  
SALE : \_\_\_\_\_

# Lampitude

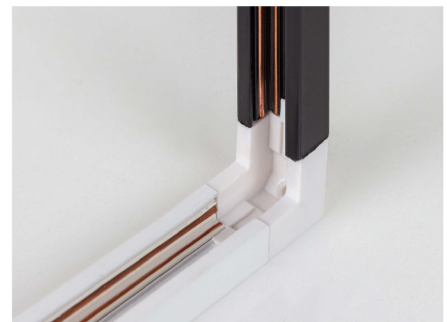
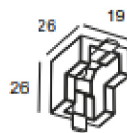
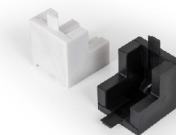
## Accessories



**DESCRIPTION** L CONNECTOR FIXING PART  
**ITEM CODE** MINI-TRACK-L-CONNECTOR-BK (สีดำ) / MINI-TRACK-L-CONNECTOR-WH (สีขาว)  
**REMARK** USE WITH MINI-TRACK-L-LINEAR



**DESCRIPTION** L CONNECTOR  
**ITEM CODE** MINI-TRACK-L-LINEAR-BK (สีดำ) / MINI-TRACK-L-LINEAR-WH (สีขาว)  
**REMARK** USE WITH MINI-TRACK-L-CONNECTOR



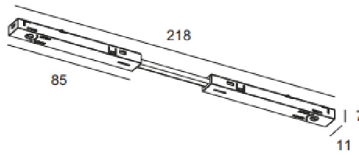
**DESCRIPTION** VERTICAL CORNER CONNECTOR FIXING PART  
**ITEM CODE** MINI-TRACK-V-CONNECTOR-BK (สีดำ) / MINI-TRACK-V-CONNECTOR-WH (สีขาว)  
**REMARK** USE WITH MINI-TRACK-V-LINEAR

Head office 299/1 (Ekamai) Klongton-Nua, Wattana, Bangkok Thailand 10110

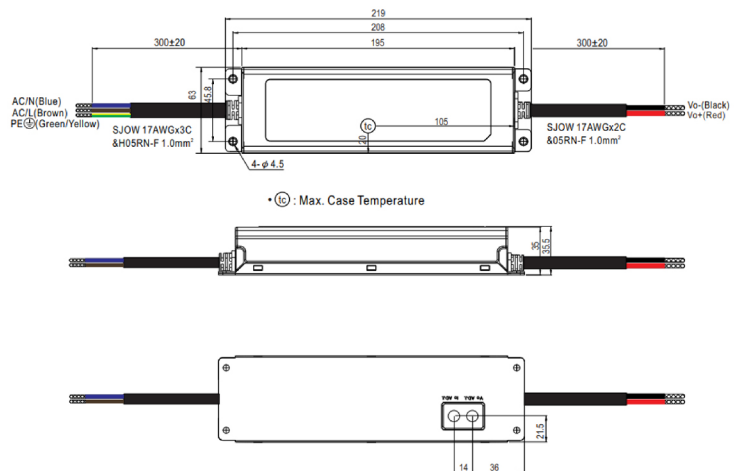
Tel (02) 392 6371-5 FAX (02) 392 1839 Email info@lamptitude.net www.lamptitude.com

PROJECT : \_\_\_\_\_  
 SALE : \_\_\_\_\_

## Accessories



**DESCRIPTION** L CONNECTOR FIXING PART  
**ITEM CODE** MINI-TRACK-L-CONNECTOR-BK (สีดำ) / MINI-TRACK-L-CONNECTOR-WH (สีขาว)  
**REMARK** USE WITH MINI-TRACK-L-LINEAR



**DESCRIPTION** POWER SUPPLY  
**ITEM CODE** CGPS-ELG-150W-48A-MW  
**WEIGHT** 0.95 KG  
**MATERIAL** METAL  
**IP RATING** IP65  
**RATED POWER** MAX 150W  
**POWER FACTOR (PF)** 0.9

**HARMONIC (THD)** <20%  
**INPUT VOLTAGE** AC 100-305V , 47-63 Hz  
**OUTPUT VOLTAGE** DC 48V  
**OUTPUT CURRENT** 3.13A  
**AMBIENT TEMPERATURE** 40°C to 55°C  
**LIFE TIME** 35,000 - 50,000 Hrs