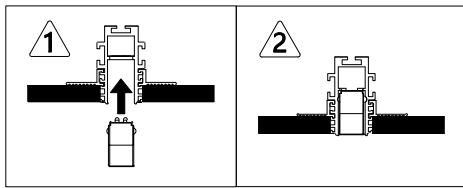
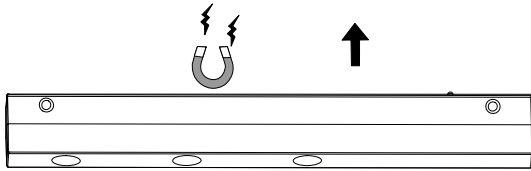


# ST-SXF / ST-SXS MANUAL



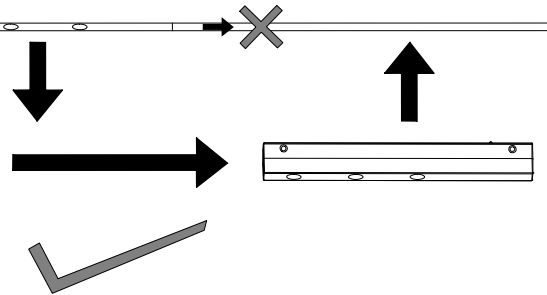
magnetic track connect with  
DC24V power supply



Light modules installation direction



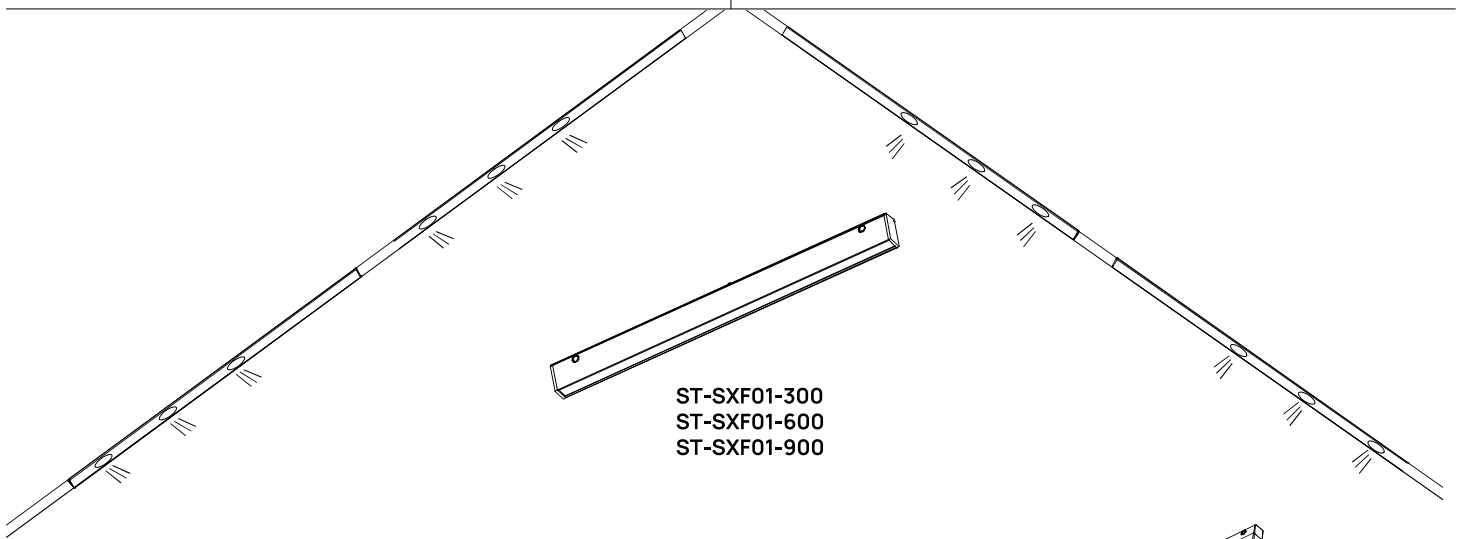
Track connect positions



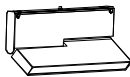
Light modules installation attention:

Track connect positions: Do not move light module through track connect position which might have gap, this will damage contact pins of light modules.

Must take out the light module and install in required position.



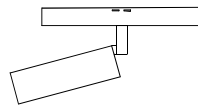
ST-SXF01-300  
ST-SXF01-600  
ST-SXF01-900



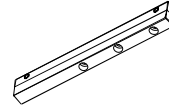
ST-SXS02



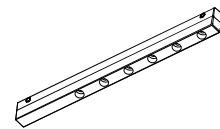
ST-SXS03



ST-SXS05  
ST-SXS07  
ST-SXS08



ST-SXS06-3



ST-SXS06-6

1. Turn on power switch to test.
2. Applied to light models marked above.

