

DASH-TS-CCT MANUAL

Lampitude






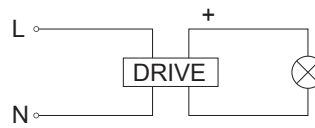
1. The lamp must be installed in rated voltage and assure safety earth.
2. Installing and fixing the lamp should be processed by professional under the condition power off.
3. When change the lamp bulb please noted that the max wattage shouldn't exceed the labeled wattage.
4. If the external electrical wire damage please change by the professional in time in case of any danger.

Rated voltage: In accordance with the product labeled

Rated power: In accordance with the product labeled



INPUT: 220-240V ~ 50/60Hz CLASS II	  
LAMP: HOUSE LED: 9W/3000K-4000K	
MATERIAL: ALUMINUM	



INSTALLATION INSTRUCTION

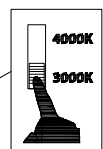
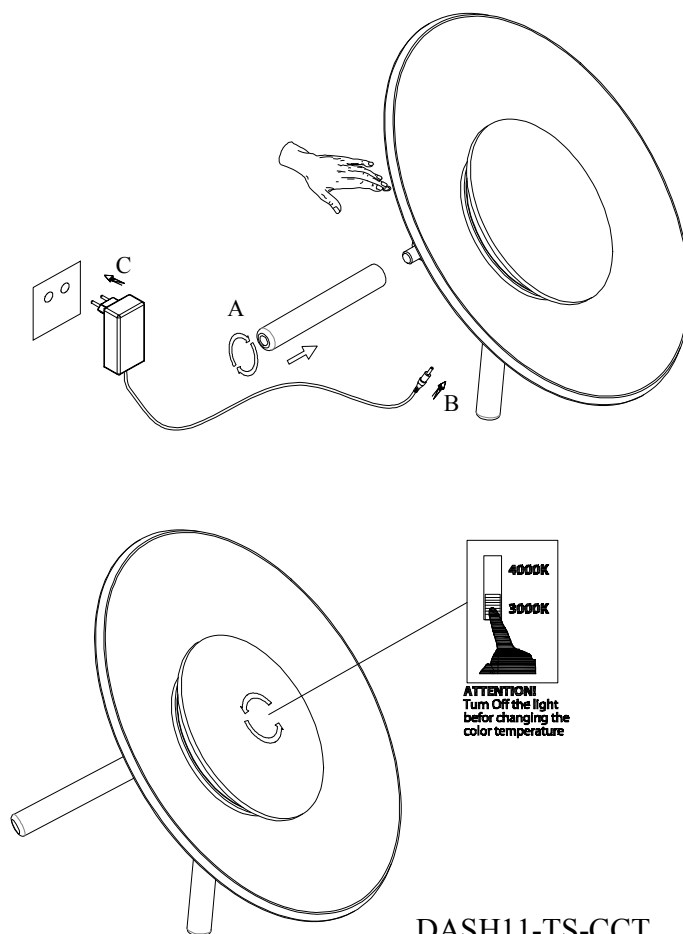
1. Before installing, make sure the power supply is switched off.
 2. Follow the steps as the figure for installation or replacement of bulb Step.
 - A. Fix the tube to the body.
 - B. Connect the cable.
 - C. Insert the plug into the socket.
- Touch dimmer switch to turn on. Touch again to dim up, dim down the light or to turn off
- After finishing every step, tighten the screws, have the fixture fixed, and then connect the power supply.

CLEANING INSTRUCTION

1. Before cleaning, ensure that the power supply is switched off.
2. Use only a soft cloth to clean the lamp, dampened with mild cleanser if needed for resistant dirt.
3. Warning: do not use alcohol or other solvents.

CAUTION:

In case of any doubt, please contact the qualified electrician.



ATTENTION!
Turn Off the light
before changing the
color temperature

DASH11-TS-CCT
DASH22-TS-CCT