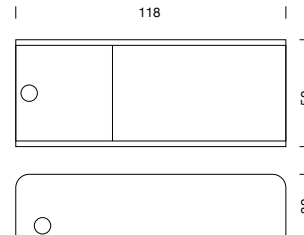


PROJECT : _____
 SALE : _____

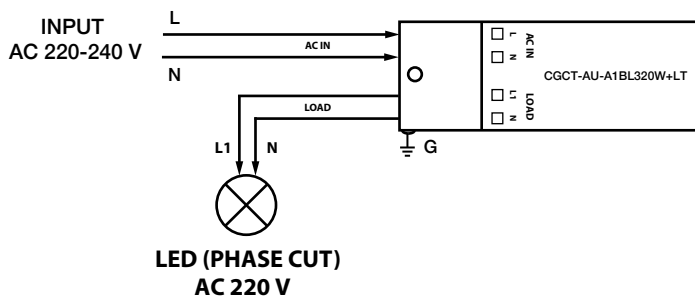
Product

Dimension



Specification

ITEM CODE	: CGCT-AU-A1B320W+LT
DESCRIPTION	: BLUETOOTH SMART CONTROLLER
SIZE	: W118 X L50 X H30 (MM)
WEIGHT	: 0.106 KG
MATERIAL	: PLASTIC
COLOR	: WHITE, BLUE
INPUT VOLTAGE	: 220-240V AC, 50/60Hz
MAX OUTPUT CURRENT	: 1.3A
POWER FACTOR	: ≥ 0.9
SURGE PROTECTION	: 1.5KV
WORKING TEMP	: -20°C to +50°C
DIMMING RANGE	: 0-100%
BLUETOOTH SLAVE	: YES
COMPATIBLE WITH TRIAC DIMMERS	: YES



WIRING DIAGRAM