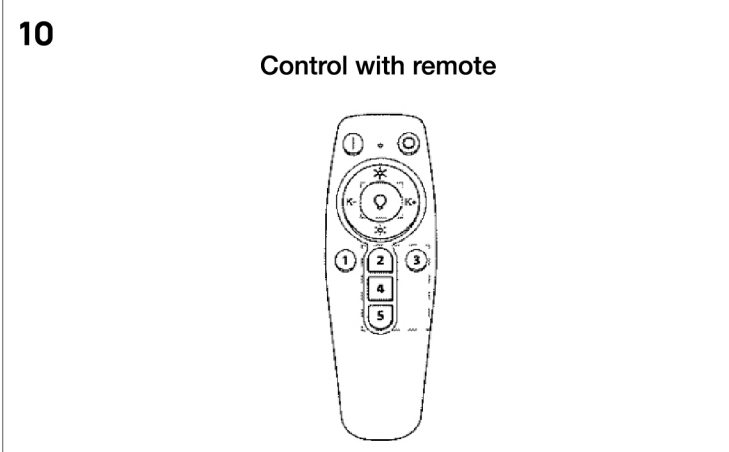
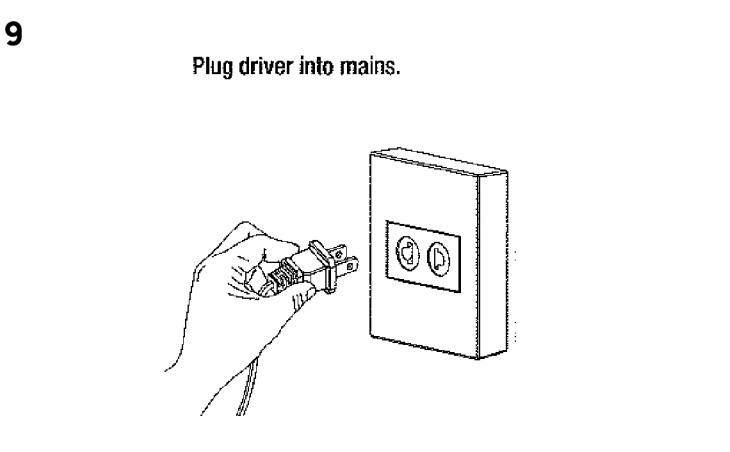
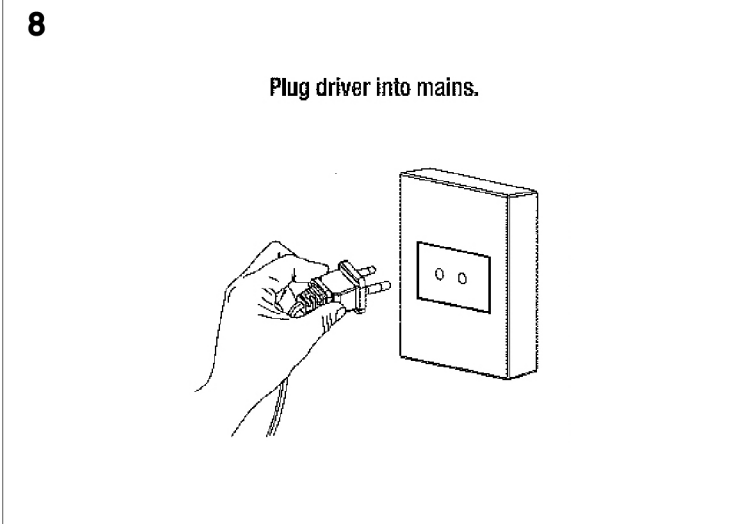
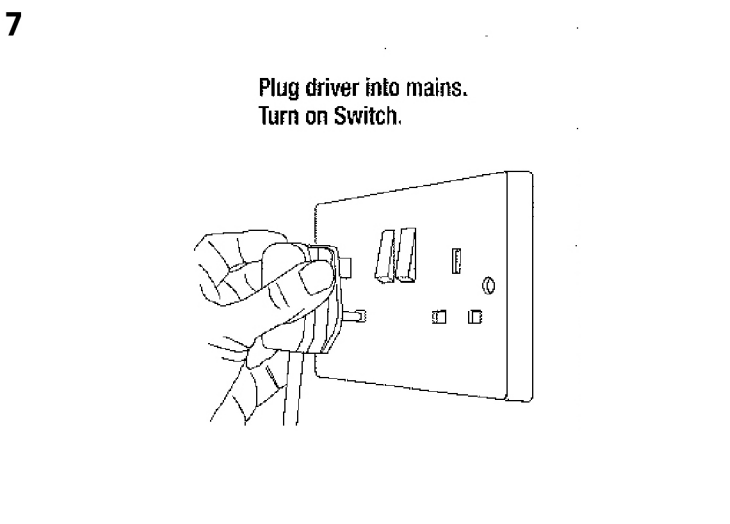
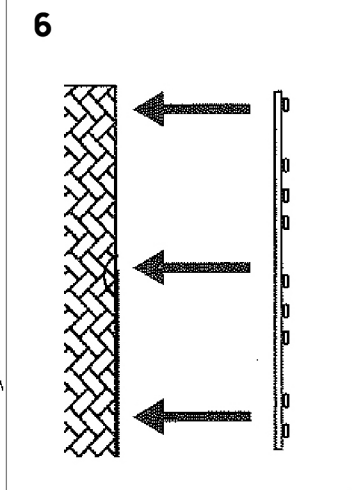
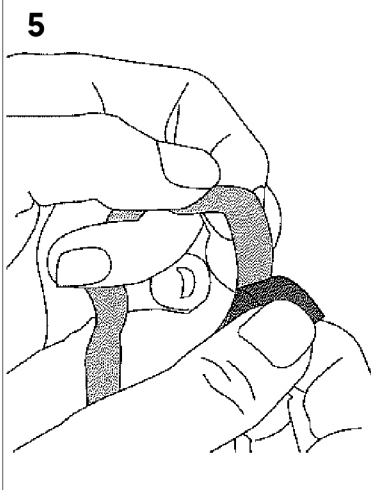
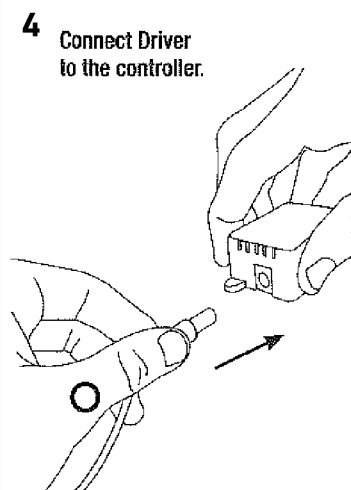
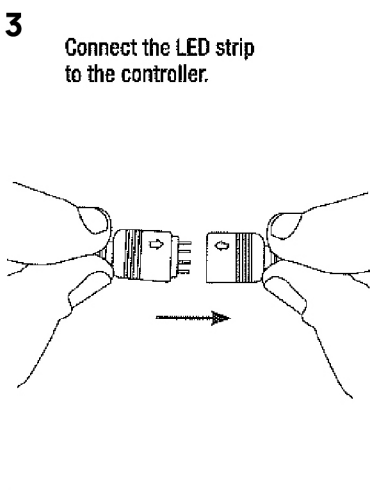
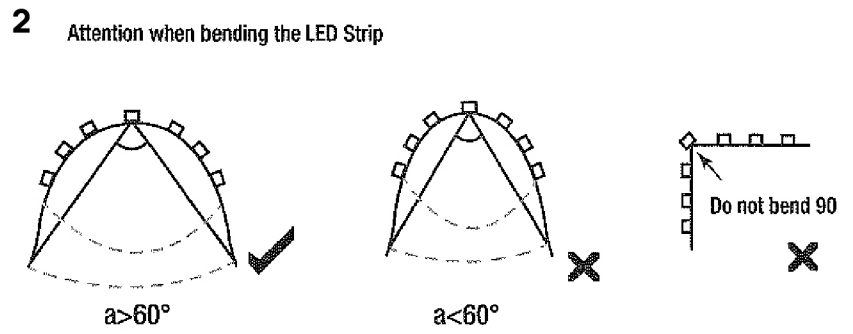
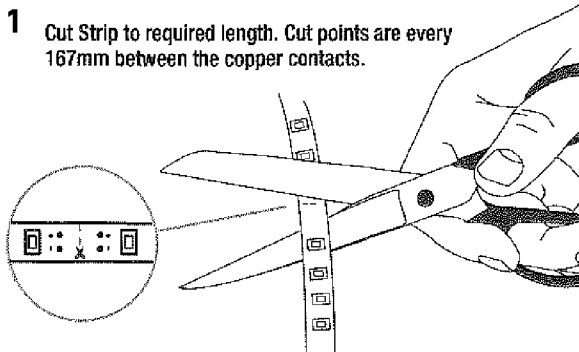


# AU-PSP-EU-002+LT MANUAL

Lampitude



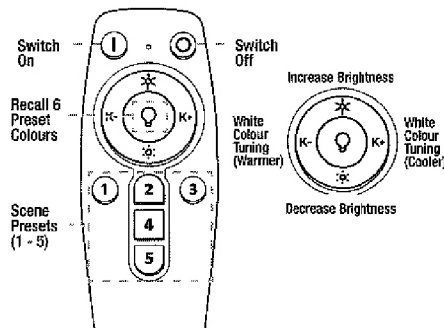
# CGCT-AU-SWT-B2-D06 MANUAL

Lampitude

## PLEASE NOTE:

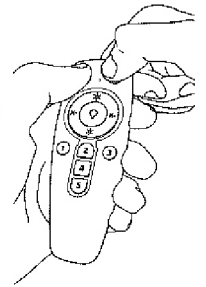
-All Devices and remotes out of the box are assigned to group 1, so all devices can work together immediately with no additional set up. If you have multiple remotes you can assign specific remotes to control specific groups of lights (i.e. in different rooms).  
Please Note: Each remote can only be assigned to one group of lights.

## STANDARD FUNCTION:



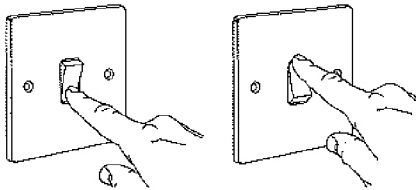
## RESET DEVICE:

Hold on/off buttons until LED flashes 3 times.



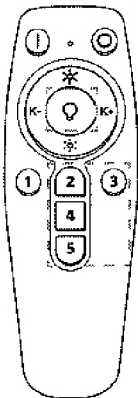
## ASSIGN LIGHTS & REMOTE TO A ROOM

1



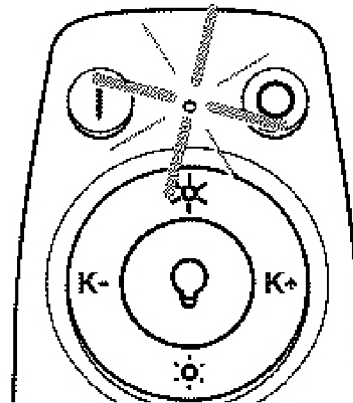
To group lights to a single remote, turn all your Bluetooth Devices off. Turn back on the lights that you wish to control with this specific remote.

2



Within 10 seconds of the lights being turned on, hold the central bulb button (☉) and a scene preset button (1, 2, 3, 4, or 5). For example, button 2, will assign that group into group 2. As there are 5 buttons you can create 5 independent groups.

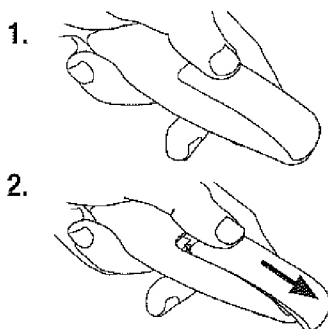
3



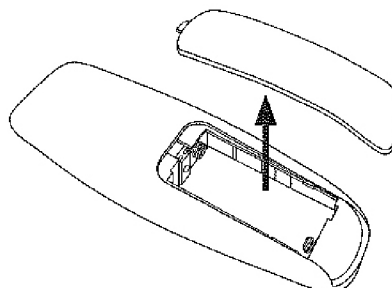
Lights and remote will flash 2 times. They can now be controlled independently from other devices.

## REPLACING THE BATTERY

4



5



6

