

INSTALLATION MANUAL FOR PRODUCT CODE OD-7406

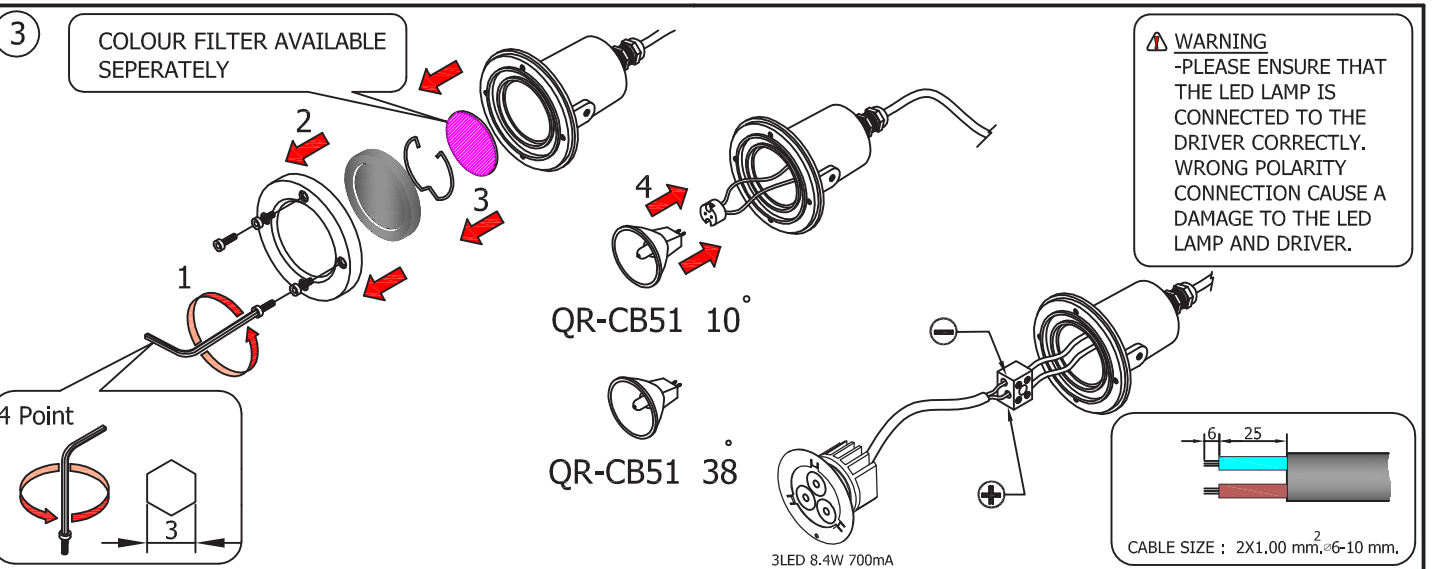
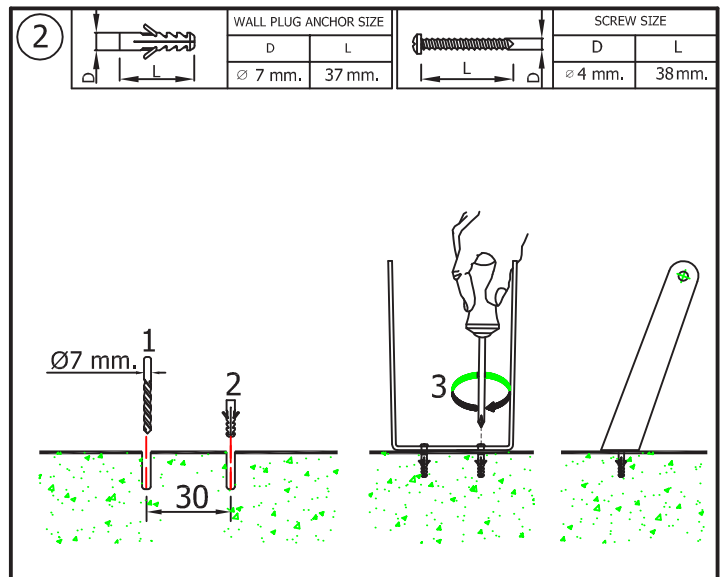
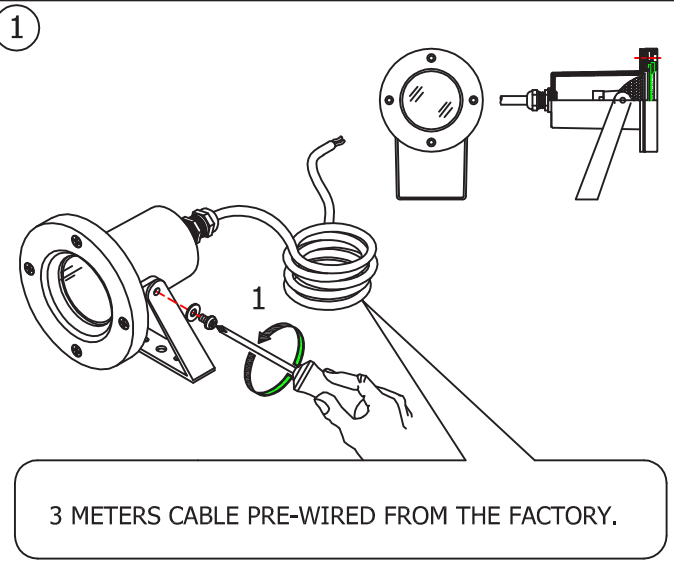
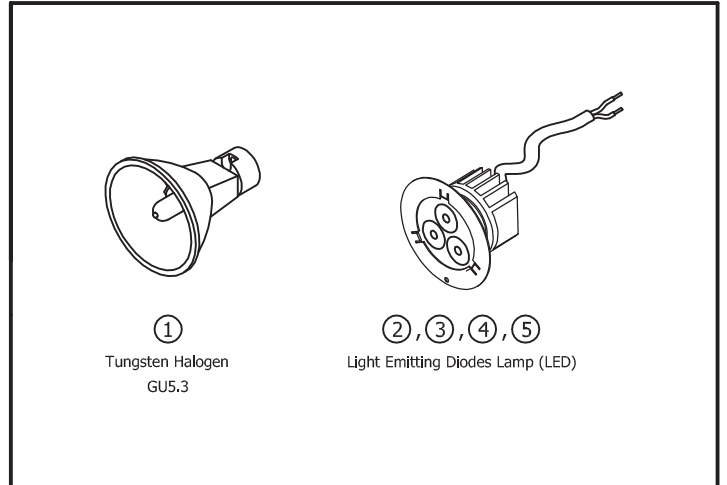
PRODUCT NAME : ACQUA-WALL/GROUND MOUNT

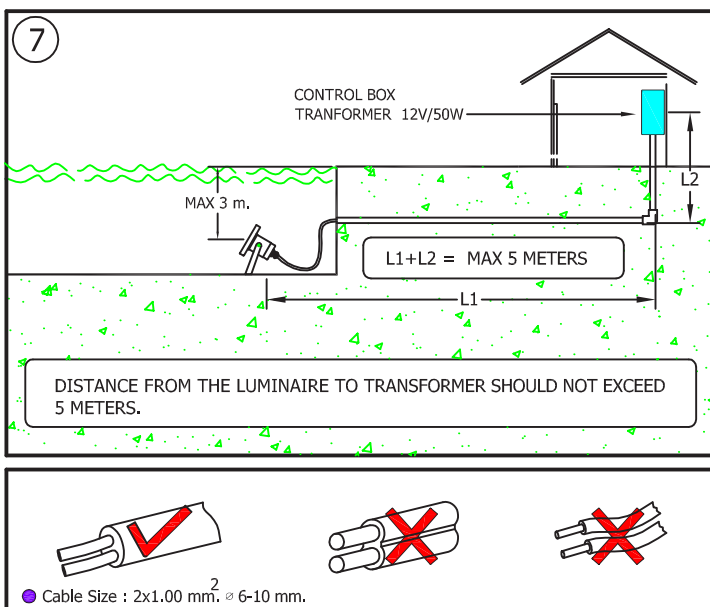
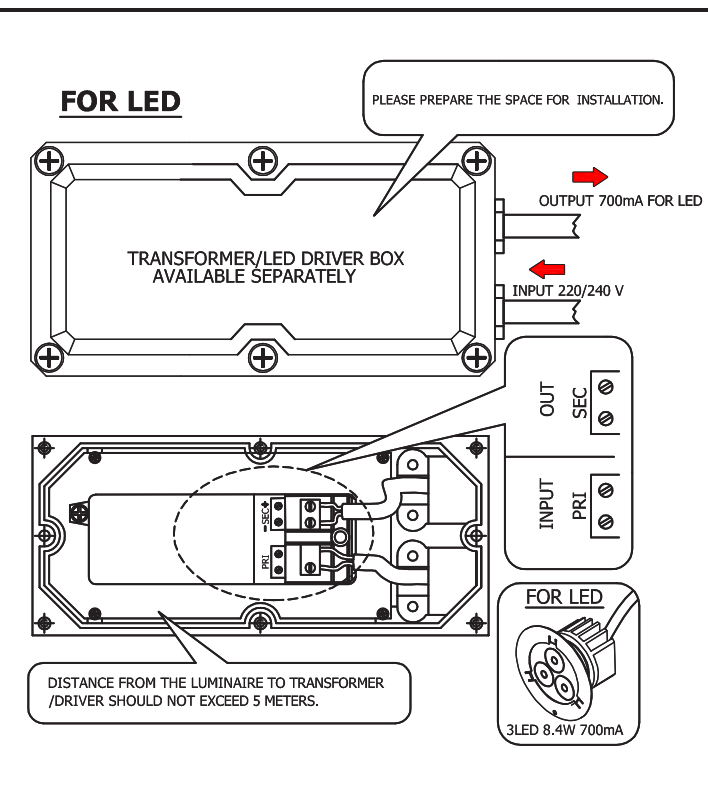
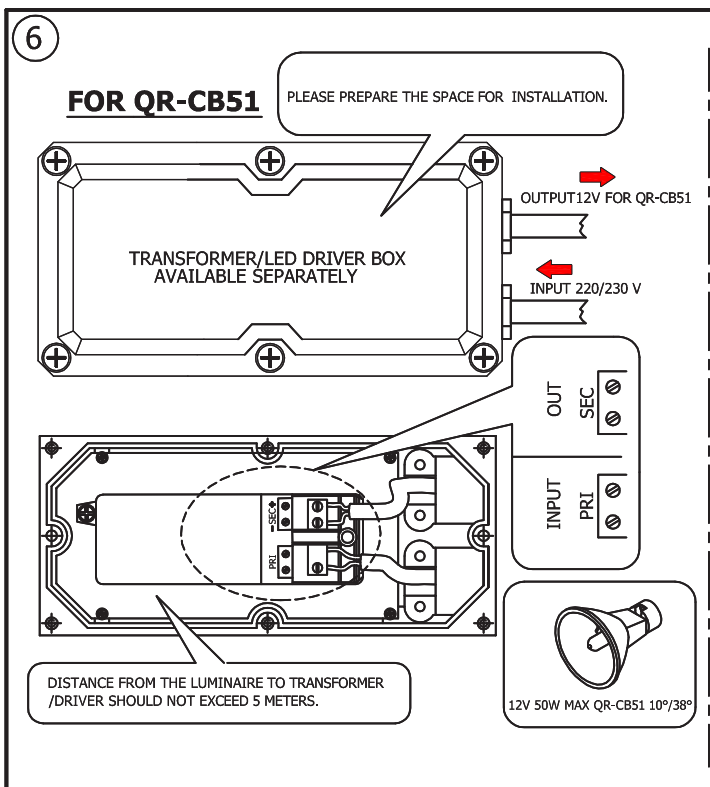
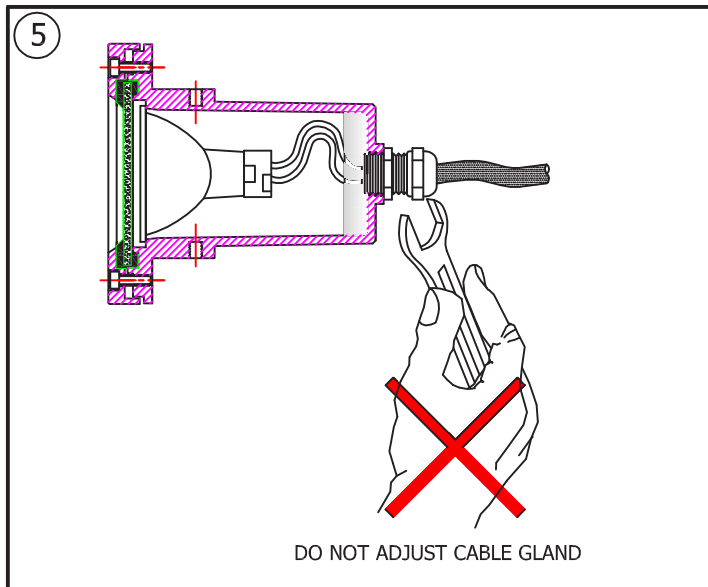
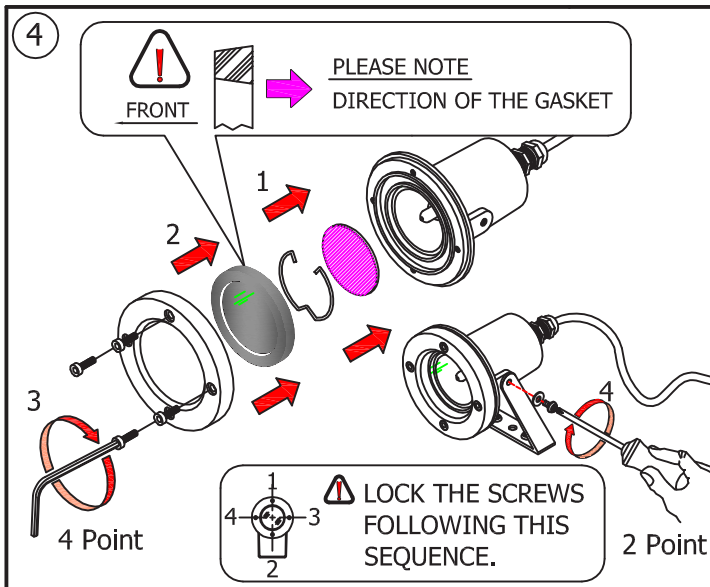
: ACQUA LED GROUND MOUNT



IP68 IK09

No.	Applicable lamp	Ordering Code
1.	12V 50W MAX QR-CB51 10°/38°	7406-0-2-281-92
2.	3LED 8.4W 700ma	7406-0-2-960-92
3.	3LED 8.4W 700ma	7406-0-2-961-92
4.	3LED 8.4W 700ma	7406-0-2-962-92
5.	3LED 8.4W 700ma	7406-0-2-963-92





REMARK :

1. INSTALLATION SHOULD BE CARRIED OUT BY A QUALIFIED ELECTRICIAN IN ACCORDANCE WITH APPROPRIATE NATIONAL WIRING REGULATION.
2. DISCONNECT THE POWER BEFORE CHANGING THE LAMP.
3. THIS IS CLASS 3 LIGHTING FIXTURE
4. DO NOT EXCEED THE MAXIMUM WATTAGE AND VOLTAGE.

WARNING

1. THE MANUFACTURER WILL NOT BE LIABLE OR HELD RESPONSIBLE FOR ANY INCORRECT INSTALLATION, MISUSE OR IMPROPER USE AND UNAUTHORISED MODIFICATION ON THE FITTINGS. FAILURE TO COMPLY WITH MENTIONED WARNING MAY CAUSED SERIOUS DAMAGE OR SERIOUS INJURY TO THE PERSONS ANIMALS OR OBJECTS. IN CASE OF MODIFICATION IS REQUIRED PLEASE CONSULT YOU DEALER FOR THE DETAILS.
2. IN CASE OF DAMAGE HAS OCCURED TO THE FITTINGS,PLEASE MAKE THE REPLACEMENT WITH STANDARD PART(S) BEFORE USE.
3. INCASE OF MIDWAY CONNECTION,USE ONLY IP68 CONNECTOR