



USB 3.0 to Gigabit Ethernet Converter
(Part Number: USB30-ETH-1)



[Http://www.CommFront.com](http://www.CommFront.com)

■ INTRODUCTION

The USB30-ETH-1 is a port-powered, high-quality, high-performance USB 3.0 to Gigabit Ethernet converter that can be used to convert any standard USB 3.0 port into a Gigabit Ethernet port and vice versa. This product supports USB 3.0 standards (backward compatible with USB 1.1 and USB 2.0), and it features auto-negotiation for half or full-duplex and 10, 100, or 1000Mbps data rates. This USB 3.0 to Gigabit Ethernet converter is efficiently powered from the USB bus and it complies with the Energy-Efficient Ethernet standard (IEEE 802.3az), in which it enters a low power idle state to reduce power and to achieve a more energy efficient Ethernet. The unit complies with IEEE 802.3, 802.3u, 802.3ab, and 802.3x standards and is fully compatible with Windows 10/8/7/Vista/XP, WinCE/Mobile, Linux, and Mac 10.6 or later.

■ FEATURES

- Converts USB 3.0 to Gigabit Ethernet and vice versa.
- Backward compatible with USB 1.1 and USB 2.0.
- Supports USB Super/High/Full/Low Speed modes with bus power.
- Complies with the Energy-Efficient Ethernet standard (IEEE 802.3az).
- Supports dynamic cable length detection and dynamic power adjustment Green Ethernet (Gigabit mode only).
- Complies with IEEE 802.3, 802.3u, and 802.3ab standards.
- Supports full duplex operation with IEEE 802.3x flow control.
- Supports IPv4/IPv6 packet Checksum Offload Engine (COE) to reduce CPU loading.
- Supports suspend mode and remote wakeup.
- Supports Windows 10/8/7/Vista/XP/2000, WinCE/Mobile, Linux, and Mac OS v10.6 or later.
- Surface Mount Technology manufactured to RoHS and ISO-9001 standards.
- Safety: Strictly certified by SGS (Cert no. EM/2014/C0046C; EM/2014/C0047C).
- 5-year manufacturer's warranty.

■ SPECIFICATIONS

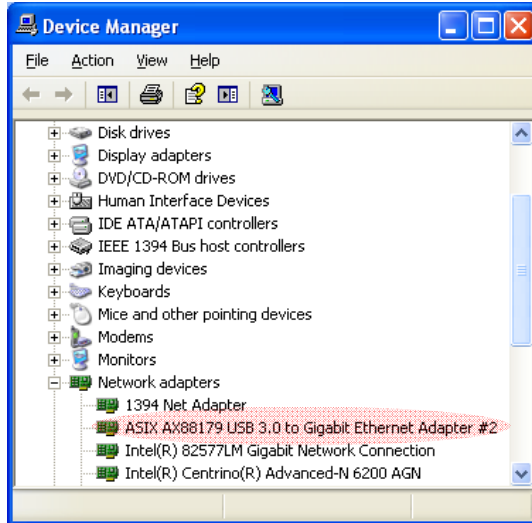
Compatibility:	USB 3.0 (backward compatible with USB 2.0 and USB 1.1)
Power Source:	USB bus power
Ethernet Data Rates:	10/100/1000Mbps (half or full duplex with auto-negotiation)
Compliances:	IEEE 802.3, 802.3u, 802.3ab, 802.3az, 802.3x
Distances:	USB: 10ft (3m); Ethernet: 300ft (100m)
Connectors:	1x USB type A male; 1x 8P8C RJ-45 female
Dimensions (H x W x D):	2.6 x 1.5 x 0.8 in (66 x 39 x 20 mm)
Cable Length:	5.9 in (0.15 m)
Weight:	1.4 oz (40 g)
Operating Temperature:	32°F to 158°F (0°C to 70°C)
Operating Humidity:	5~95% RH (no condensation)

■ LED INDICATORS

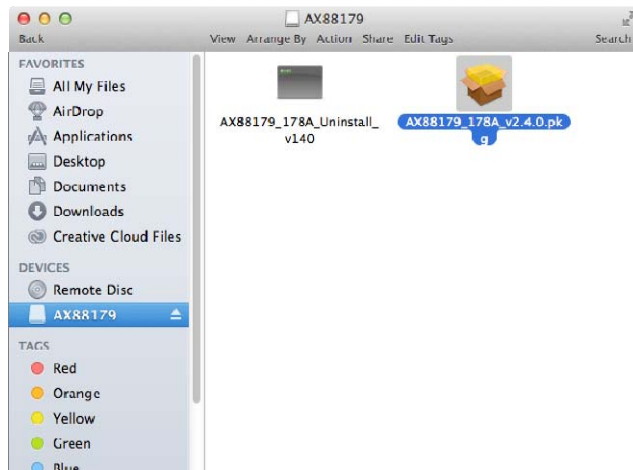
 R/W	Steady: Functioning Flashing: Reading/writing data Off: Inactive/no connection
 LINK	Steady: Functioning Flashing: - Off: Inactive/no connection
 DUPLEX	Steady: - Flashing: Half/full-duplex mode Off: Inactive/no connection

■ DRIVER INSTALLATIONS

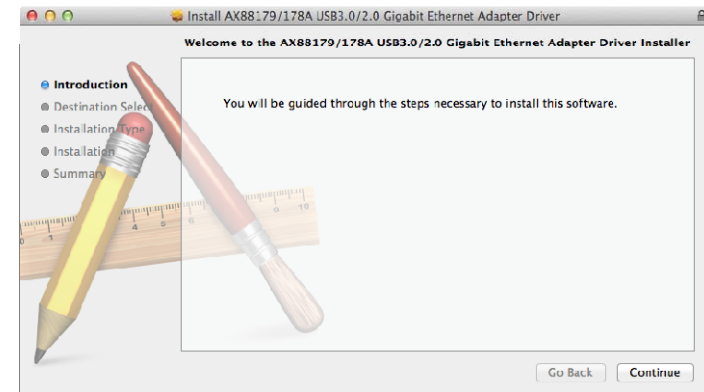
- Windows
 - 1) Drivers will be installed automatically when your computer is connected to the Internet. Alternatively, you may install the drivers from the CD provided with the product.
 - 2) The new "AX88179 USB 3.0 to Gigabit Ethernet Adapter" will show up under the Device Manager (Windows).



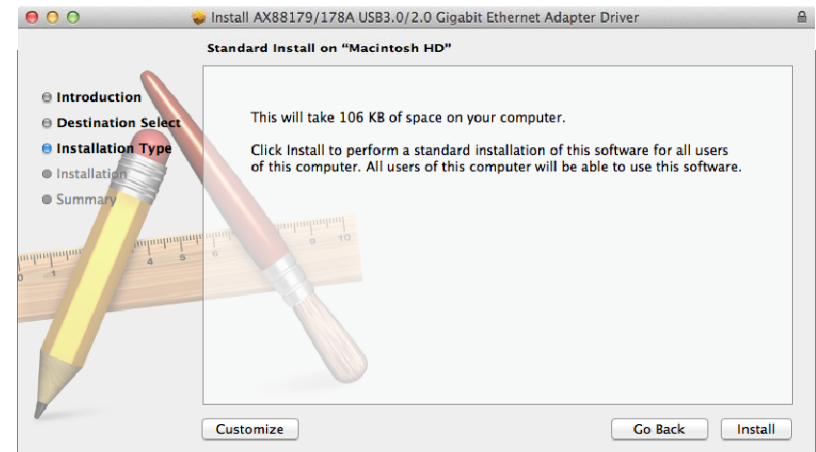
- Mac
 - 1) Locate the Mac drivers from the CD provided and click on the "AX88719_178A.dmg" file. The following "AX88719" virtual disk will appear on the desktop. (Note: This "AX88719" virtual disk will be automatically removed after rebooting the system.)



- 2) Click the "AX88719_178A_vx.x.x.pkg" ("x.x.x" is the driver's revision number), and the following driver setup dialog will appear. Click on the "Continue" button to proceed.



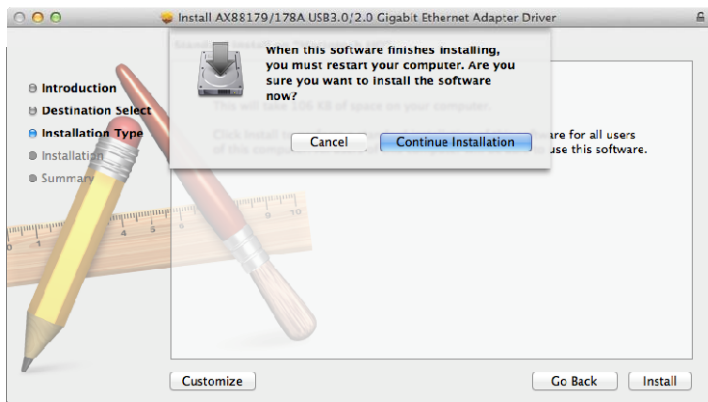
- 3) Click the "Install" button to continue the installation.



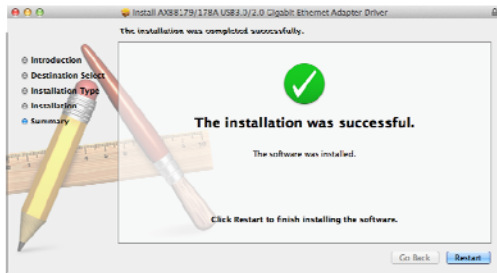
- 4) You might need to enter your user name and password during the process.



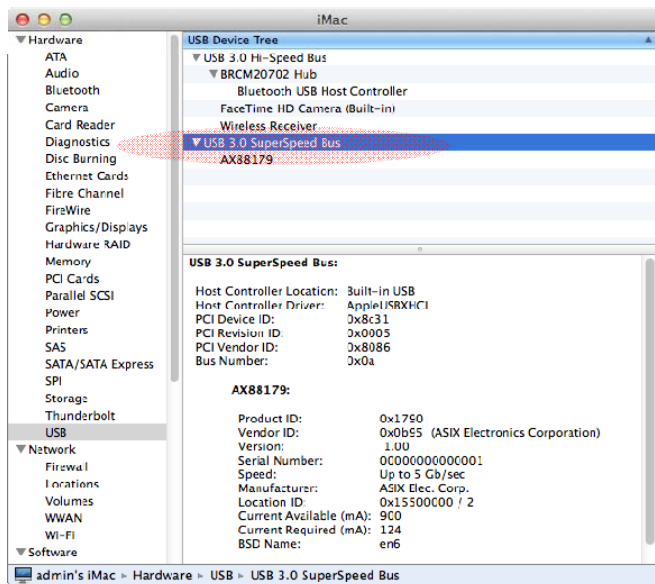
- 5) Click on the "Continue Installation" button to continue the installation.



6) Click on the "Restart" button to restart the Mac OSX system and complete the installation.



7) The new "AX88179" device will show up under the System/Hardware.



■ TROUBLESHOOTING

- Be sure that the "AX88179 USB 3.0 to Gigabit Ethernet" device shows up under the Device Manager (Windows) or System/Hardware (Mac).
- Make sure that the network cable is plugged in and the red color "LINK" LED is lit up when the device is connected with the computer.
- If none of the LEDs are lit up, please check the Internet connection and/or reinstall the drivers.