



JAN/FEB 2016, VOL. 33, NO. 1

# Product Awards

& PREFERRED PRODUCTS

*Improving Patient Care Through Research & Education*



**BruxZir Solid Zirconia**  
Glidewell Laboratories



**Composi-Tight 3D XR  
Sectional Matrix System**  
Garrison Dental Solutions



**GC FujiCEM2**  
GC America



**Feather Light LED**  
Ultralight Optics



**Sani-Soak Ultra**  
Enzyme Industries



**MIXPAC T-Mixer**  
Sulzer MIXPAC



**Sinsational Smile**  
Sinsational Smile



**ilumi Post**  
iLumi Sciences, Inc.



**SINGLES**  
Meisinger USA



**CaviWipes**  
Kerr Total Care



**Oral-B Pro 5000  
SmartSeries**  
Oral B



**Parapost Taper Lux**  
Coltene Whaledent



**Bib-Eze**  
Kerr Total Care



**Luster for Zirconia  
and Lithium Disilicate**  
Meisinger USA



**Tetric EvoCeram Bulk Fill**  
Ivoclar Vivadent



**Venus Pearl**  
Heraeus Kulzer



# Product Awards & PREFERRED PRODUCTS

## 2016

### SENIOR EDITORS

John W. Farah, D.D.S., Ph.D.  
John M. Powers, Ph.D.

### EDITOR-IN-CHIEF

Sabiha S. Bunek, D.D.S.

### CLINICAL EDITOR

Lori K. Brown, D.D.S.

### ASSISTANT CLINICAL EDITOR

Callie M. Knapp, B.A.

### EDITORIAL BOARD

John A. Molinari, Ph.D.  
Peter Yaman, D.D.S., M.S.  
William A. Gregory, D.D.S., M.S.  
Santine Harlock, D.D.S.  
Julius E. Bunek, D.D.S., M.S.  
Brent Kolb, D.D.S.  
Nizar Mansour, D.D.S., M.S.  
James Olsen, D.D.S.  
Kathy O'Keefe, D.D.S., M.S.  
William T. Stevenson, D.D.S.  
Robert J. Stevenson, D.D.S.  
Brad Stieper, D.D.S.  
Gary Bloomfield, D.D.S.  
Eric Brust, D.D.S., M.S.  
Stacy Griffith, D.D.S.  
Michelle Elford, D.D.S.  
Mark Zahn, D.D.S. M.S.

### EXECUTIVE TEAM

Matt G. Cowen, B.S.  
Audi M. DiDomenico, B.A.  
Jim Dombrowski  
Jackie Farah, M.A.Ed.  
Heidi L. Graber  
Dave Molnar, B.S.  
John A. Molinari, Ph.D.  
Peri D. Nelson, B.S.  
Christopher Voigtman  
Nelson Williams, M.S.  
Mary E. Yakas, B.A., CMC  
Ron Yapp, M.S.

### PUBLISHER

Dental Consultants, Inc.

Please send inquiries and address changes to:

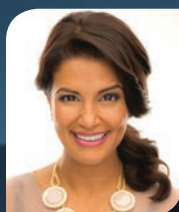
**THE DENTAL ADVISOR,**  
3110 West Liberty, Ann Arbor, MI 48103  
Call: 800.347.1330 • 734.665.2020  
Fax: 734.665.1648  
Email: [connect@dentaladvisor.com](mailto:connect@dentaladvisor.com)  
Website: [www.dentaladvisor.com](http://www.dentaladvisor.com)

*No unauthorized duplication or reprints may be made. Inquiries concerning duplication may be directed to the publisher. Copyright ©2016, Dental Consultants, Inc. All rights reserved. Printed in the U.S.A. (ISSN 0748-4666) by Print-Tech, Inc.*

*This publication is printed on paper that is 50% recycled and has 25% post-consumer content.*

### RATINGS:

Excellent + + + + +  
Very Good + + + +  
Good + + +



Dr. Sabiha S. Bunek  
Editor-in-Chief

Happy New Year! THE DENTAL ADVISOR awards are one of the most respected awards created to recognize quality products and equipment, taking into account evidence-based clinical and laboratory research to honor the best.

To be considered for an award, products have to receive an excellent rating by THE DENTAL ADVISOR, as well as stand out from all others in the market place. With hundreds of products to review each year, the task to pick the best of the best is not simple. Our editorial board spends weeks debating, discussing, and voting on products that fit our criteria for innovation, quality and excellence in each category. In the end, only one product is chosen for the Top Product Award, and the runner up is awarded the Preferred Product Award.

I extend my congratulations to our winners, and many thanks to our editorial board and our 250 practicing clinical consultants in the United States. Tried and true products, as well as newer products, are found on this list that acts as a buyer's guide for dental professionals worldwide. Thank you for your continued support, and as always, your comments and suggestions are always welcomed; you can reach me at [drbunek@dentaladvisor.com](mailto:drbunek@dentaladvisor.com).

### Product Awards

#### Direct Restoratives..... 3-5

Sectional Matrix  
Anterior Matrix  
Tofflemire Type Matrix Band  
Bonding Agent: 5th Generation  
Bonding Agent: Universal  
Pulpal Protectant  
Composite: Universal  
Composite: Universal- Multilayer  
Composite: Esthetic  
Composite: Low-Filled Flowable  
Composite: Bulk Fill, Restorative  
Bioactive Product  
RMGI: Restorative

#### Indirect Restoratives ..... 5-7

Cements: Adhesive Resin  
Cements: Esthetic Resin  
Cements: Innovative  
Cements: Self Adhesive  
Cements: RMGI  
Alginate Alternative  
Bite Registration  
Cements: Implant  
Impression Material: PVS  
Fiber Post  
Provisional: Esthetic  
Provisional: Universal  
Ceramic Polishers  
Soft Tissue Management Paste  
Retraction Cord

#### Infection Control ..... 8-9

Instrument Processor  
Sterilization Monitoring System  
Air/ Water Syringe Tip  
Waterline Treatment Product  
Sterilizer: Class B  
Top HVE Tip  
Disposable Product  
Gloves-Nitrile

Infection Control Product of the Year  
Masks  
Gloves: Chloroprene  
Surface Disinfectant

#### Patient Products ..... 10

Powered Toothbrush  
Manual Toothbrush  
Temporary Therapeutic Device

#### Diagnostic

LED Headlight  
Intraoral Camera  
Panoramic Imaging System

#### Endodontic ..... 11

Dental Dam  
Endodontic Reparative Cement  
Endodontic Medicament

#### Hygiene

Fluoride Varnish  
Pediatric Product  
Prophy Paste

#### Miscellaneous Awards ..... 12

Assistant Product of the Year  
Whitening: In-Office  
Whitening: Take-Home  
Dynamic Mixer  
Best Value Product  
Innovative Product of the Year

#### Long-Term Performers..... 13

Long-Term Performer: Provisional  
Long-Term Performer: Composite  
Long-Term Performer: Zirconia  
Long-Term Performer: Cement

#### Additional Award Winners ... 13-14

### Preferred Products

#### 2016 Preferred Product List...15-19

Burs: Diamond, Single-Use .....15  
Handpiece: Air-Driven .....15  
Handpiece: Hygiene .....15  
Handpiece: Maintenance.....15  
Bonding Agent- 5th Generation .....15  
Bonding Agent- Universal.....15  
Composite: Universal- Multilayer.....16  
Composite: Bulk Fill, Restorative .....16  
Gauze .....18  
LED Curing Light.....16  
Impression Material: PVS .....16  
Cements: Self Adhesive.....16  
Fiber Post .....16  
Ceramic Primer.....17  
Whitening: In-Office .....17  
Pediatric Product .....17  
Gloves- Chloroprene .....17  
Enzymatic Cleaner .....17  
Surface Disinfectant .....17  
Endodontic Reparative Cement .....18  
Amalgam Containment System .....18

*Visit [www.dentaladvisor.com](http://www.dentaladvisor.com) for more information.*





# 2016 PRODUCT AWARD WINNERS

## DIRECT RESTORATIVES

### SECTIONAL MATRIX



#### Why we chose this product:

- "Blue rings are retentive and stable on teeth."
- "I thought the original 3D was a good product, but the new blue face is even better."
- "Great contours and contacts."

### ANTERIOR MATRIX



#### Why we chose this product:

- "Superior to flat Mylar strips."
- "A great clinical solution for Class III composites and diastema closure."
- "The Bioclear system enabled me to create contours with composite that I was not able to with traditional Mylar strips."

### TOFFLEMIRE TYPE MATRIX BAND



#### Why we chose this product:

- "Does not stick to composite."
- "Improved moisture control."
- "Thin, flexible band that does not collapse during placement."

### BONDING AGENT: 5TH GENERATION



#### Why we chose this product:

- "Good surface wettability – only one application needed."
- "No need to refrigerate."
- "No post-operative sensitivity."

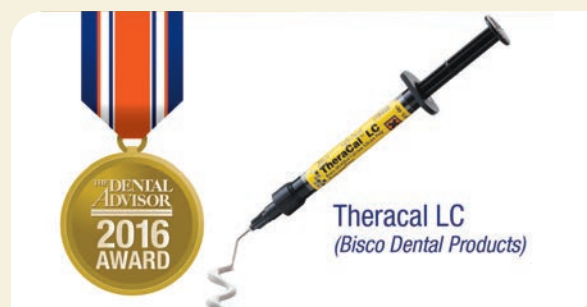
### BONDING AGENT: UNIVERSAL



#### Why we chose this product:

- "So many different uses in one bottle."
- "Now I can keep just one adhesive in the office for every procedure."
- "Simplifies bonding procedures."

### PULPAL PROTECTANT



#### Why we chose this product:

- "No mixing required and it's a one-step application."
- "It was not as messy as other liners and it's simple."
- "Light-cure feature is a great advantage."

# DIRECT RESTORATIVES

## COMPOSITE: UNIVERSAL



### Why we chose this product:

- "The excellent handling, rapid cure and esthetics continue to make this my material of choice."
- "Looks great after 5 years, and I am sure it will last much longer."
- "Blends exceptionally well with surrounding tooth structure."

## COMPOSITE-UNIVERSAL: MULTILAYER



### Why we chose this product:

- "The enamel shades give good depth for most anterior multi-layer/shade restorations."
- "Composite stays where placed and is easy to sculpt."
- "Good color match and very nice surface finish."

## COMPOSITE: ESTHETIC



### Why we chose this product:

- "Good consistency and esthetic results."
- "Very radiopaque."
- "Material gains translucency upon light curing."

## COMPOSITE: LOW-FILLED FLOWABLE



### Why we chose this product:

- "The final restoration has a great polish."
- "Very good radiopacity."
- "The material is easy to place and polish, and patients have not reported any sensitivity."

## COMPOSITE: BULKFILL, RESTORATIVE



### Why we chose this product:

- "I loved the way it blended with the tooth."
- "Easy to place, sculpt and, in general, work with."
- "Good handling characteristics – just about the perfect consistency."

## BIOACTIVE PRODUCT



### Why we chose this product:

- "Very nice delivery system."
- "I was surprised as to how well the esthetics looked at one year, especially for anterior restorations."
- "Having good uptake of calcium, phosphate and fluoride ions is a huge plus."

## DIRECT RESTORATIVES

### RMGI: RESTORATIVE



#### Why we chose this product:

- "Easy to place – material provides good adaptation."
- "Finishes nicely."
- "Sets quickly."



THE DENTAL  
ADVISOR

## INDIRECT RESTORATIVES

### CEMENTS: ADHESIVE RESIN



#### Why we chose this product:

- "This one kit does everything I need!"
- "No refrigeration required."
- "Great bond strength."

### CEMENTS: INNOVATIVE



#### Why we chose this product:

- "Consistent mixes and setting times."
- "Low-viscosity cement does not inhibit complete seating."
- "Excess cement peels away with a light touch."

### CEMENTS: ESTHETIC RESIN



#### Why we chose this product:

- "Complete kit with everything needed."
- "I was able to get precise shade matching"
- "Easy clean-up."
- "Shading system is different, but it makes sense."

### CEMENTS: SELF ADHESIVE



#### Why we chose this product:

- "My favorite features were ease of use, consistent mixing, and less assistant time."
- "Easy to dispense and clean up."
- "Variety of tips is helpful."



# INDIRECT RESTORATIVES

## CEMENTS: RMGI



### Why we chose this product:

- "I love this cement."
- "This is my cement of choice for use with implant crowns."
- "Cleanup is easy when the excess is removed at the gel stage."
- "Very convenient to dispense the cement directly into the restoration."

## ALGINATE ALTERNATIVE



### Why we chose this product:

- "Works great as a matrix for making a temporary crown."
- "Impressions turned out nicely each time!"
- "I won't go back to alginate."

## BITE REGISTRATION



### Why we chose this product:

- Easy to remove – does not lock into undercuts."
- "Setting time is just right for most clinical applications."
- "Stiff but not brittle."
- "Strong, even in paper-thin areas."

## CEMENTS: IMPLANT



### Why we chose this product:

- "Cem-Implant is an implant crown cement that ensures both seal and retrievability."
- "Direct placement of cement into restorations makes the procedure quick and easy."
- "Excess cement is easy to remove in one piece."

## IMPRESSION MATERIAL: PVS



### Why we chose this product:

- "Good material – better than most VPS materials I have used in the past."
- "Quick setting time – patients loved how fast it set."
- "I never had a retake with this material in spite of some difficult subgingival preparations."

## FIBER POST



### Why we chose this product:

- "The posts have a retentive head design."
- "The natural color of the posts enhances esthetics, especially in the anterior."
- "Excellent product! ParaPost has been around for a long time and this is their best product."

# INDIRECT RESTORATIVES

## PROVISIONAL: ESTHETIC



### Why we chose this product:

- "Nice esthetics and shade selection"
- "Great material."
- "Luxatemp polishes to a high luster."

## PROVISIONAL: UNIVERSAL



### Why we chose this product:

- "Great handling – easy to finish and polish."
- "Good shade selection."
- "Minimal air-inhibited layer."
- "Fit is excellent."

## CERAMIC POLISHERS



### Why we chose this product:

- "Excellent polish."
- "High gloss finish."
- "The adjustment wheel is perfect for reducing contact areas."

## SOFT TISSUE MANAGEMENT PASTE



### Why we chose this product:

- "I have used Traxodent with my two-cord system and the results are great."
- "Easy to use; rinses off completely."
- "This material seemed to work well following a gingivectomy, where cord could not be placed."

## RETRACTION CORD



### Why we chose this product:

- "The 000 size is an excellent addition to the traditional cord sizes."
- "KnitPak+ is far more resistant to shredding and wrapping around a high speed bur."
- "I love using the double- and triple-zero for two-cord technique."



# INFECTION CONTROL

## INSTRUMENT PROCESSOR



### Why we chose this product:

- "Instruments are clean and dry before sterilization."
- "I used the five minute rinse cycle to clean soiled instruments immediately after use – later I ran a full cycle."
- "Control panel is easy to operate."

## STERILIZATION MONITORING SYSTEM



### Why we chose this product:

- You can see results right away, as opposed to the monitoring service which takes days."
- "I like having three separate options to verify results."
- "ConForm 10 saves me time and money compared to the strips I have to mail in for results."

## AIR/WATER SYRINGE TIP



### Why we chose this product:

- "Absolutely no water contamination when using air!"
- "We are switching all our syringes over to this system. I liked the quality of the adaptor, uniform spray, and quality of the tips."
- "Spray was even and uniform. I could rotate the syringe tips, but they didn't twist during use."

## WATERLINE TREATMENT PRODUCT



### Why we chose this product:

- "DP365B cartridges were able to successfully reduce and achieve control of waterborne bacteria in dental waterlines for a one-year test interval."

## STERILIZER: CLASS B



### Why we chose this product:

- "Dries instruments and pouches better than any other sterilizer."
- "Easy to use; easy to load/unload."
- "I like the auto fill and auto drain features."

## HVE TIP



### Why we chose this product:

- "One tip serves the function of a HVE tip and a saliva ejector."
- "Does not grab soft tissue."
- "The first real advance in HVE tips in 40 years."



# INFECTION CONTROL

## DISPOSABLE PRODUCT



### Why we chose this product:

- "I like that it is disposable and convenient to incorporate into my practice."
- "I appreciate the lack of cross-contamination."
- "Patients thought it was soft and comfortable."

## GLOVES: NITRILE



### Why we chose this product:

- "Gloves are soft and light-weight."
- "No strain on my hands."
- "The most comfortable nitrile gloves I have ever used."
- "They do not feel like a typical nitrile glove; they are made of a very thin material, offer good tactile sense, provide better fit with less hand fatigue."

## INFECTION CONTROL PRODUCT OF THE YEAR



### Why we chose this product:

- "Soothing to dry skin."
- "This is an incredible product. Softening takes place immediately and lasts through multiple hand washings."
- "Hands feel soft like they have lotion on, but with no greasy residue."

## MASKS



### Why we chose this product:

- "Masks have a good fit and are secure and comfortable."
- "I like the top and bottom strips for better adaptation/comfort."
- "Easy to breathe – does not fog up glasses."

## GLOVES: CHLOROPRENE



### Why we chose this product:

- "The material stretches, unlike other non-latex gloves, making donning much easier."
- "Gloves are easy to remove from the box."
- "Feels like I don't even have gloves on."

## SURFACE DISINFECTANT



### Why we chose this product:

- "The pre-moistened wipes are wetter than my previous brand."
- "The product is non-irritating to eyes/skin – no warning labels needed."

## PATIENT PRODUCTS

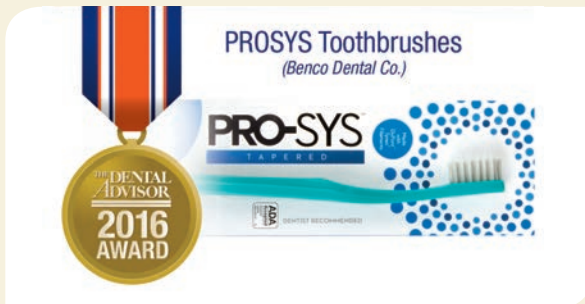
### POWERED TOOTHBRUSH



#### Why we chose this product:

- "The Oral-B App is very useful with adults trying to form better habits and kids/teenagers who need help."
- "The pressure sensor is brilliant for patients with recession."
- "Battery charge lasts a long time, and travel case is convenient."

### MANUAL TOOTHBRUSH



#### Why we chose this product:

- "It cleaned better than other manual brushes that I've used."
- "The brush lays flat on a surface without rolling."
- "I really loved the softness of the tapered bristles and the deep-clean feeling it left behind."

### TEMPORARY THERAPEUTIC DEVICE



#### Why we chose this product:

- "Great option when we need an immediate splint."
- "Molds and fits better than other 'boil-and-bite' guards."
- "Excellent adaptation and retention can be achieved."
- "Able to reheat and re-adapt numerous times."

## DIAGNOSTIC

### LED HEADLIGHT



#### Why we chose this product:

- "Lightweight – I do not feel like any additional weight is on my glasses."
- "Battery charge lasts all day."
- "Bright, focused light."

### TOP INTRAORAL CAMERA



#### Why we chose this product:

- "Great images!"
- "Camera is lightweight with a slim head."
- "Lights are bright but do not wash out the colors in the images."

### PANORAMIC IMAGING SYSTEM



#### Why we chose this product:

- "One of the easiest machines to use."
- "Clear, crisp images."
- "The 2D+ feature is useful in determining the buccal-lingual relationship of objects in the images."

## ENDODONTIC

### DENTAL DAM



#### Why we chose this product:

- "This is probably the best dental dam I have ever used. I was very pleased with it."
- "It is extremely flexible and doesn't tear when stretching it."
- "Easy to place and floss it through without the need for lubrication of the dam."

### ENDODONTIC REPARATIVE CEMENT



#### Why we chose this product:

- "Economical and versatile bioactive material."
- "Ideal material for pulpal injuries and root treatments, especially pediatric pulpotomies."
- "Doesn't discolor over time."
- "Consistency is smooth, not gritty."

### ENDODONTIC MEDICAMENT



#### Why we chose this product:

- "Highly radiopaque."
- "Pre-mixed paste saves time."
- "Tips are flexible."

## HYGIENE

### FLUORIDE VARNISH



#### Why we chose this product:

- "Seemed to be less sticky than other brands I have used."
- "Patients like the variety in flavors."
- "Every child liked it!"

### PEDIATRIC PRODUCT



#### Why we chose this product:

- "I liked the kid friendly designs and their names."
- "The animal characters were great for children ages 2-8. It really helped to engage the patient."
- "Zooby Prophyl Angles performed as well or better than any prophyl angles I have."

### PROPHY PASTE



#### Why we chose this product:

- "Does not splatter."
- "Easy to rinse."
- "Cups are color-coded and easy to open."



## MISCELLANEOUS PRODUCTS

### ASSISTANT PRODUCT OF THE YEAR



#### Why we chose this product:

- "Nice variety of scents."
- "Patients say they are comfortable."
- "Seals well around the nose."

### WHITENING: IN-OFFICE



#### Why we chose this product:

- "I have some patients who are very sensitive – having a gentle light output is great."
- "Three, 10-minute rounds – the system is quick to use."
- "This system produces the most consistent results. Every patient lightened at least three Vita shades."

### WHITENING: TAKE-HOME



#### Why we chose this product:

- "The 35% gel whitens the teeth fast!"
- "Nice patient kit."

### DYNAMIC MIXER



#### Why we chose this product:

- "Loading an impression tray is usually hard on my hand from squeezing the handle of an automix gun. This mixing system is literally as easy as the push of a button."
- "Cartridges are easy to change."
- "Short mixing tips minimize waste."

### BEST VALUE PRODUCT



#### Why we chose this product:

- "Homogeneous mix and less waste."
- "I found the MIXPAC T-Mixer tips to be an excellent product, providing a savings to the office without changing procedures."
- "Got a good mix every time."

### INNOVATIVE PRODUCT OF THE YEAR



#### Why we chose this product:

- "This product is one of the best innovations in dentistry - less steps and no more hydrofluoric acid gel etch!"
- Lab testing performed by THE DENTAL ADVISOR confirmed excellent bond strengths when using this new primer with lithium disilicate ceramics.

## LONG-TERM PERFORMERS

### LONG-TERM PERFORMER: PROVISIONAL



#### Why we chose this product:

- "This has been a wonderful compromise for both patient and doctor. The patient gets to keep their tooth and I get to give him an inexpensive crown that will last."
- "Emergency visit for a broken bridge in the esthetic zone. Nice results considering patient cannot afford other treatment at this time."

### LONG-TERM PERFORMER: COMPOSITE



#### Why we chose this product:

- "The esthetics were exceptional in non-discolored teeth."
- "I used an opaque composite or flowable to tone down any discoloration with good results."
- "I love the ease of placement of this composite – it is not sticky and contours well."

### LONG-TERM PERFORMER: ZIRCONIA



#### Why we chose this product:

- "Great option for second molars because minimal occlusal reduction is required (0.5-1.0 mm)."
- "The recalled BruxZir restorations looked great and had excellent anatomy and surface finish."
- "I use BruxZir for all molars and bridges and for patients who brux. I have not had any failures."

### LONG-TERM PERFORMER: CEMENT



#### Why we chose this product:

- "My favorite features were ease of use, consistent mixing, and less assistant time."
- "Easy to dispense and clean up."
- "Variety of tips is helpful."

## ADDITIONAL AWARD WINNERS

### ANESTHETIC BUFFERING SYSTEM

Onset, OraPharma

### TOPICAL ANESTHETIC

Cetacaine Liquid, Cetylite Industries, Inc.

### NEEDLES

Septoject Evolution, Septodont, Inc.

### BURS: DIAMOND, SINGLE USE

NeoDiamond, Microcopy

### BURS: DIAMOND, MULTI USE

FG Diamond Burs, A&M Instruments

### BURS: CARBIDE, MULTI USE

Great White #2, SS White Burs

### HANDPIECE: AIR DRIVEN

Ti-Max Z900L, NSK

### HANDPIECE: ELECTRIC

Bien Air MX2 Micromotor, Bien Air USA

### HANDPIECE: HYGIENE

Young Hygiene Handpiece, Young

### HANDPIECE MAINTENANCE SYSTEM

Quattrocare Plus, KaVo

### BONDING AGENT: 4TH GENERATION

Optibond FL, Kerr Corporation

### BONDING AGENT: 6TH GENERATION, TYPE I

Clearfil SE Protect, Kuraray America

**BONDING AGENT:  
6TH GENERATION, TYPE II,  
ACE ALL-BOND SE,** Bisco Dental Products

**BONDING AGENT: 7TH GENERATION  
G-Aenial Bond,** GC America

**COMPOSITE: HIGHLY-FILLED  
FLOWABLE**  
Clearfil Majesty ES Flow, Kuraray America

**COMPOSITE: BULKFILL, BASE  
X-Tra Base,** VOCO America

**LED CURING LIGHT**  
Bluephase Style, Ivoclar Vivadent

**COMPOSITE FINISHING/POLISHING:  
ONE STEP**  
Gazelle Nano Composite Polishers,  
Microcopy

**COMPOSITE FINISHING/POLISHING:  
SYSTEM**  
Super-Snap Xtreme,  
Shofu Dental Corporation

**SOFT TISSUE LASER**  
NV Microlaser, Den-Mat Holdings, LLC

**CEMENTS: TEMPORARY,  
NON-EUGENOL**  
Temp Bond NE, Kerr Corporation

**COMPOSITE CORE MATERIAL**  
Rebilda DC, VOCO America

**CROWN & BRIDGE REMOVER**  
WAMKey, Golden Dental Solutions

**CERAMIC PRIMER  
(ZIRCONIA & METAL)**  
Monobond Plus, Ivoclar Vivadent

**DENTURE RELINE MATERIAL**  
Sofreliner Tough S,  
Tokuyama Dental America

**IMPLANT ATTACHMENT  
PICK UP MATERIAL**  
Quick-Up, VOCO America

**ALGINATE**  
Cavex Color Change, Cavex Holland BV

**GAUZE**  
Ultrapure Non-Woven Sponge, Crosstex

**TOP ISOLATION & EVACUATION DEVICE**  
Dry Shield, Dryshield

**HYGIENE PRODUCT OF THE YEAR**  
Cavitron Focused Spray slimLINE 1000  
FITGRIP Ultrasonic Insert,  
DENTSPLY Professional

**PROPHY ANGLE**  
Vera by Young, Young Dental

**PREVENTATIVE PRODUCT**  
MI Paste Plus, GC America

**DESENSITIZER**  
Teethmate, Kuraray America

**ULTRASONIC SCALER**  
Cavitron Plus, DENTSPLY Professional

**GLOVES-LATEX**  
Cyntek Powder-Free Latex Gloves,  
Cranberry USA

**HAND SANITIZER**  
Moist SURE Foaming Hand Sanitizer,  
Sultan Healthcare

**HAND CARE**  
Hand Essentials Skin Repair Cream,  
Hu-Friedy Manufacturing Co., LLC

**ENZYMATIC CLEANER**  
Empower, Kerr Totalcare

**DISPOSABLE EYEWEAR**  
TIDIShield Assemble 'n Go, TIDI Products

**INSTRUMENT CASSETTE**  
Infinity, Hu-Friedy Manufacturing Co., LLC

**INNOVATIVE EQUIPMENT**  
Dean Dental System Compressor  
and Vac, Dean Dental Systems

**LED OVERHEAD LIGHT**  
Adec LED, Adec

**CARIES DETECTOR**  
Spectra Caries Detection Aid,  
Air Techniques

**ORAL CANCER SCREENING DEVICE**  
Oral ID, Oral ID

**PHOSPHOR STORAGE PLATES**  
Scan X Classic, Air Techniques

**SPLINTING MATERIAL**  
Dentapreg SFM, Dentapreg America, Inc.

**ENDO ACCESS BUR**  
Munce Discovery Burs, CJM Engineering

**AIR COMPRESSOR**  
AirStar 70 Dental Air System,  
Air Techniques

**VACUUM**  
Mojave Dry Vacuum System,  
Air Techniques

**GREEN PRODUCT**  
BioPure, Bio-Pure Products, Inc.

**AMALGAM CONTAINMENT SYSTEM**  
HG Containment Series, Anterior Quest

**SMILE SIMULATION SOFTWARE**  
SNAP Software, Snap Imaging Systems

**HEMOSTATIC DRESSING**  
Surestop, Impact Medical Sales  
and Supply

**ORAL SURGERY INSTRUMENT**  
Luxator, Directa Dental

**RESORBABLE MEMBRANE**  
Guidor Matrix, Sunstar Butler

**PATIENT PRODUCT**  
Oraverse, Septodont





# 2016 PREFERRED PRODUCTS

## BURS: DIAMOND, SINGLE USE



### Why we chose this product:

- "Diamonds are consistently sharp right out of the package."
- "Smooth tooth reduction."
- "Color coding is helpful – I can choose the right grit at a glance."

## HANDPIECE: AIR DRIVEN



### Why we chose this product:

- "I liked the light weight, balance and small head size."
- "Great all-around handpieces."
- "Very good torque."

## HANDPIECE: HYGIENE



### Why we chose this product:

- "Lightweight and quiet."
- "I can polish all day without recharging."
- "My hand does not get tired after holding this handpiece."

## HANDPIECE MAINTENANCE SYSTEM



### Why we chose this product:

- "Instructions thoroughly cover use and maintenance of the STATMATIC unit."
- "Cans of STATMATIC Spray are easy to load and unload."
- "Operation is simple once handpieces are installed."
- "Disposable absorption pads were effective in collecting excess oil and keeping the interior of the unit clean."

## BONDING AGENT: 5TH GENERATION



### Why we chose this product:

- "Easy to use, multipurpose product."
- "Coats tooth surface well."
- "Good radiopacity."

## BONDING AGENT: UNIVERSAL



### Why we chose this product:

- "Precise application."
- "No post-operative sensitivity."
- "Less waste than a dropper bottle or unit-dose delivery."

**COMPOSITE: UNIVERSAL-MULTILAYER****Why we chose this product:**

- "The handling properties of Aura are very good."
- "The combination of a nano-hybrid and a microfill is a nice feature within a single system."
- "Capsule design and color coding are perfect."

**COMPOSITE: BULK FILL, RESTORATIVE****Why we chose this product:**

- "Good shade selection; adapted well to cavity walls."
- "Easy to dispense, place, and handle."
- "Does not stick to my instrument and has no pull back."
- "One step fill is great!"

**LED CURING LIGHT****Why we chose this product:**

- "The stainless steel housing is easy to keep clean."
- "No noise."
- "Simple programming has basic functions."
- "Unit is heavier than some others but more durable."

**IMPRESSION MATERIAL: PVS****Why we chose this product:**

- "I like the viscosity of the light body—little to no voids, bubbles or drags."
- "The heavy-bodied material extruded easily compared with most heavy-bodied materials. The light- and heavy-bodied materials always blended together seamlessly and the heavy-bodied material provided excellent detail without drag."

**CEMENTS: ADHESIVE RESIN****Why we chose this product:**

- "It is a complete system with everything in one kit."
- "Universal shade works well in most cases."
- "Compared to other adhesive resin cements, e-CEMENT is a complete kit and easy to use."

**FIBER POST****Why we chose this product:**

- "The drills are nicely matched with the post size, making placement very predictable."
- "Good radiopacity."
- "Blister packs keep posts clean until ready for use."

### CERAMIC PRIMER (ZIRCONIA & METAL)



**Z-Prime Plus**  
(Bisco Dental Products)

#### Why we chose this product:

- "It was really easy to use – single bottle, no mixing – and coated very well."
- "I did not have to refrigerate."
- "Compatible with dual-cured resins and most surfaces."

### WHITENING: IN-OFFICE



**Sinsational Smile**  
(Sinsational Smile)

#### Why we chose this product:

- "Quickest, simplest in-office whitening system I have used."
- "Not one patient had any sensitivity."
- "Flexible light head was very easy to position."

### PEDIATRIC PRODUCT



**Angie by Angelus**  
(Angelus)

#### Why we chose this product:

- "Angie Line makes the dental experience fun for kids and offers a nice distraction."
- "Parents loved the Dental Album as an organized way to store primary teeth."
- "The more useful products were the ones that camouflaged scary dental equipment and made it fun."

### GLOVES: CHLOROPRENE



**Microflex Neogard®** (Ansell)

#### Why we chose this product:

- "For a non-latex glove, it is very good. They stretch better than other non-latex gloves I have used."
- "Does not create tension on my hands"
- "Loved the grip feature on the fingertips."

### ENZYMATIC CLEANER



**Sani-Soak Ultra**  
(Enzyme Industries)

#### Why we chose this product:

- "It did not break down in ultrasonic cleaner like the other solutions do – stays bubbly all day."
- "Effective while being nontoxic."
- "Instruments come out shiny."

### SURFACE DISINFECTANT



**CaviWipes**  
(Kerr TotalCare)

#### Why we chose this product:

- "Cleans surfaces really well before disinfecting!"
- "Surface stays wet, and the wipes don't dry out."
- "I love the XL size wipes!"



**ENDODONTIC REPARATIVE CEMENT****Why we chose this product:**

- "Ideal for pulpotomy."
- "Excellent results with perforations."
- "Visually identifiable on radiographs."
- "Multiple-use packaging is economical."

**AMALGAM CONTAINMENT SYSTEM****Why we chose this product:**

- "Low maintenance system."
- "Great solution for small spaces."
- "I was concerned about changing the filter but was pleasantly surprised at the ease and cleanliness!"

**GAUZE****Why we chose this product:**

- "I could rest assured that the gauze stayed sterile until the patient was ready to use it."
- "Positive patient perception – package is clearly marked 'sterile'."
- "Gauze squares are thick and soft."
- "Package is easy to open."

**ADDITIONAL PREFERRED PRODUCTS****TOPICAL ANESTHETIC**

One Touch Advanced, Hager Worldwide

**NEEDLES**

Transcodent Painless Injection Needles,  
Transcoject America, LLC

**BURS: DIAMOND, MULTI USE**

BOSPHORUS Burs, Tekmetal San. Tic. Ltd. Sti.

**HANDPIECE: ELECTRIC**

Ti Max Z95L, NSK

**SECTIONAL MATRIX**

V3 Ring, Ultradent/Triodont

**ANTERIOR MATRIX**

Uvener, Ultradent

**BONDING AGENT: 4TH GENERATION**

3M Adper Scotchbond Multi Purpose Plus System, 3M

**BONDING AGENT: 7TH GENERATION**

BEAUTIBOND, SHOFU DENTAL CORPORATION

**COMPOSITE: HIGHLY-FILLED FLOWABLE**

BEAUTIFIL Flow Plus, SHOFU DENTAL CORPORATION

**COMPOSITE: BULKFILL, BASE**

Filtek Bulk Fill Flowable, 3M

**RMGI: RESTORATIVE**

3M Ketac Nano Light-Curing Glass Ionomer  
Restorative, 3M

**COMPOSITE FINISHING/ POLISHING-ONE STEP**

Dimanto, VOCO America

**SOFT TISSUE MANAGEMENT PASTE**

Soft Tissue Retraction Paste, 3M

**SOFT TISSUE LASER**

Picasso Lite, AMD

## ADDITIONAL PREFERRED PRODUCTS

### RETRACTION CORD

Short Cut, Kerr

### BITE REGISTRATION

R-SI-LINE METAL BITE, R-Dental

### CEMENTS: TEMPORARY, NON- EUGENOL

Rely X Temp NE, 3M

### CEMENTS: RMGI

3M ESPE Rely X Luting Plus, 3M

### CEMENTS: SELF ADHESIVE

G CEM Link ACE, GC America

### CEMENTS: ESTHETIC RESIN

NX3 Nexus Third Generation, Kerr Corporation

### COMPOSITE CORE MATERIAL

Luxacore Z Dual, DMG America

### COMPOSITE: LOW-FILLED FLOWABLE

Estelite Flow Quick, Tokuyama Dental America

### CERAMIC POLISHERS

JAZZ PS3, SS White

### IMPLANT CEMENT

Premier Implant Cement, Premier Dental Products Company

### ALGINATE

KromaFaze, Kerr

### AIR/WATER SYRINGE TIPS

Flash Tips, Sultan Healthcare

### DISPOSABLE

Tab a Bib, Edalu Products

### PROPHY PASTE

Enamel Pro, Premier Dental Products Company

### PROPHY ANGLE

2Pro Total Access, Premier Dental Products Company

### PREVENTATIVE PRODUCT

Remin Pro, VOCO America

### DESENSITIZER

DEFEND Desensitizer, Mydent

### GLOVES: NITRILE

Evolve 300, Cranberry USA

### HAND CARE

Septodont Hand Cream, Septodont

### INSTRUMENT PROCESSOR

G7881 Dental Disinfector, Miele Professional

### WATERLINE TREATMENT PRODUCT

Monarch, Air Techniques

### MASKS

Comfit Plush, Sultan Healthcare

### BEST VALUE PRODUCT

Access Crown, Centrix, Inc.

### LED OVERHEAD LIGHT

HELIOS, Pelton and Crane

### ORAL CANCER SCREENING DEVICE

Velscope VX, LED Dental

### GREEN PRODUCT

Bee Sure Naturals Ear Loop Face Masks, EcoBee

### SMILE SIMULATION SOFTWARE

Smile Guide Touch Pro, Digident LLC



In partnership with

**VIVA LEARNING™**

## AWARD WINNING PRODUCTS FOR 2016

Dr. Sabiha Bunek, Editor In Chief of THE DENTAL ADVISOR, will discuss highly rated products in the industry. These products are carefully chosen for outstanding performance when used by practicing clinicians. Product features, advantages, and clinical use will be discussed. This session will also allow attendees to ask questions on product use and clinical armamentarium. Categories will include: Direct and Indirect Restoratives, Long Term Performers, Infection Control Products, Specialty Products, and Hygiene Products. For over 30 years, THE DENTAL ADVISOR has been a trusted resource for the dental industry providing objective information on products and equipment.



**Dr. Sabiha S. Bunek**  
Editor-in-Chief

**Wednesday, February 3, 2016**  
**3:00pm PT, 6:00pm EST**

*Register free for 2 CE Credits at  
[vivalearning.com](http://vivalearning.com) to learn why these  
products were chosen as winners!*