



### Recommended Set Up Starting Points

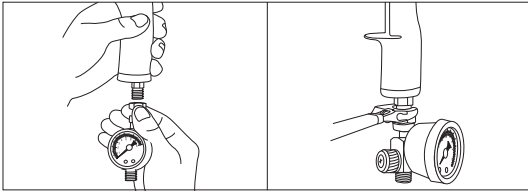
Fan Control Knob: Open 2 rotations from closed position  
Fluid Control Knob: Open 4 rotations from closed position  
Air Flow control valve: 18-20 psi / 1.24 – 1.37 Bar

## 3M™ Performance Spray Gun HVLP – Gravity

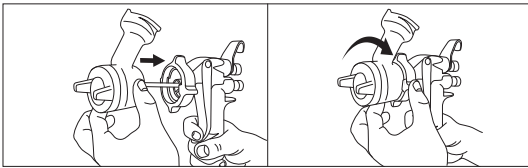
Maximum Operating Pressure: 20 psi | 1.38 bar

### Assembly

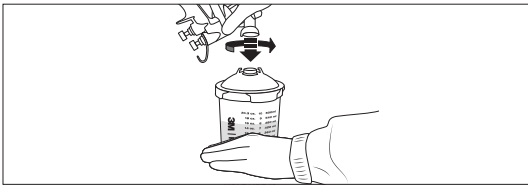
- 1 Attach the supplied air flow valve to the bottom of the gun.



- 2 Attach the nozzle to the spray gun with the locking collar fully connected. *Note: It is easier to install the nozzle while pulling the trigger backward toward the spray gun handle. To remove the nozzle from the spray gun, reverse the process.*



- 3 Attach 3M™ PPS™ Series 2.0 spray cup to nozzle.



- 4 Once the spray gun is properly assembled you may attach the air line.

#### Nozzle Recommendation

\*Starting points only, refer to Paint Manufacture for recommendation on fluid tip size

	2.0	1.8	1.6	1.4	1.3	1.2
High Viscosity Coatings	●	●				
Sprayable Fillers	●	●				
High Build Primer		●	●	●		
Primer Surfacer		●	●	●		
Wet on Wet Primer				●	●	
Primer Sealer				●	●	
Direct Gloss				●		
Single Stage Top Coat				●		
Solvent Base Color				●	●	
Clearcoat				●	●	●
Waterborne Base Coat					●	●

### Adding the 3M™ PPS™ Series 2.0 Spray Cup System Components

- 1 Insert the 3M™ PPS™ Series 2.0 Spray Cup System disposable liner into the 3M™ PPS™ Series 2.0 Spray Cup System mixing cup.



- 2 Pour material to be sprayed into the 3M™ PPS™ Series 2.0 Spray Cup System mixing cup. Stir as needed.



- 3 Place the 3M™ PPS™ Series 2.0 Spray Cup System lid with built-in filter on top of the 3M™ PPS™ mixing cup with liner and snap into place.



- 4 Turn until tight. Insert 3M™ PPS™ Series 2.0 Spray Cup System sealing plug prior to shaking or sealing.



- 5 Attach spray gun to filled 3M™ PPS™ Series 2.0 Spray Cup System cup.



**WARNING!** Do not immerse spray gun or nozzles in cleaning solvents or gun washers. The maximum operational air pressure of this HVLP spray gun is 20 PSI.



### Recommended Set Up Starting Points

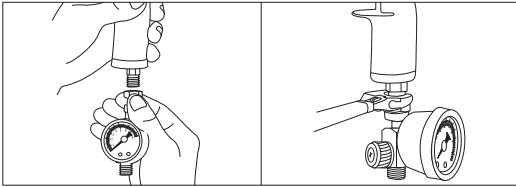
Fan Control Knob: Open 2 rotations from closed position  
Fluid Control Knob: Open 4 rotations from closed position  
Air Flow control valve: 18-20 psi / 1.24 – 1.37 Bar

# 3M™ Performance Spray Gun HVLP – Pressure

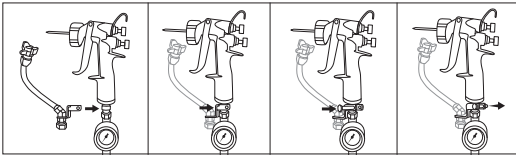
Maximum Operating Pressure: 18 psi | 1.24 bar

## Assembly

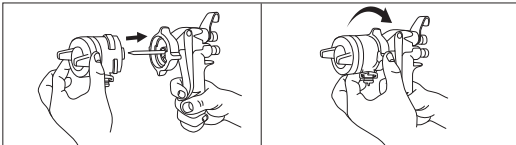
- 1 Attach the supplied air flow valve to the bottom of the gun.



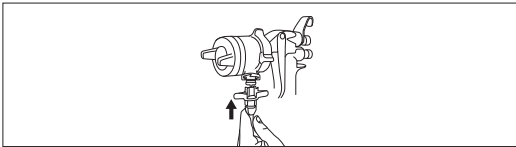
- 2 Attach Fluid Hose Whip to base of spray gun.



- 3 Attach the nozzle to the spray gun with the locking collar fully connected. *Note: It is easier to install the nozzle while pulling the trigger backward toward the spray gun handle.*



- 4 Connect hose whip to nozzle.



- 5 Attach fluid and pressure lines from bulk feed system (or pressure pot) *Note: Utilize the optional manual fluid shut-off valve, if desired, between hose whip and fluid supply*

### Nozzle Recommendation

\*Starting points only, refer to Paint Manufacture for recommendation on fluid tip size

	1.1	1.4	1.8
Textured Paints	●	●	●
1K Top Coats	●	●	
2K Top Coats	●	●	
Base Coat / Single Stage Materials	●		
Clear Coats	●	●	
Epoxy / Urethanes Primers	●	●	●
Adhesives		●	●
Release Agents	●		

## Cleaning

### Pressure

- Once the system is adequately flushed (pot, lines), depressurize the system (or close the optional fluid valve)
- After pressure is relieved, remove the hose whip from the nozzle.
- Remove nozzle from spray gun to clean residue from the nozzle. Rinse out and flush cleaning solvent through the nozzle with fluid tip pointed straight down into receptacle to collect waste solvent.
- Wipe needle tip. Store spray gun with a nozzle attached to protect the needle.

### Gravity

- Once coating application is complete, disconnect the air hose from the gun.
- To drain back paint into cup - Invert cup, pull trigger, and tap the PPS™ cup on a table 3 times.
- Rinse out nozzle spout and flush cleaning solvent through the nozzle by pulling trigger with fluid tip pointed straight down into receptacle to collect waste solvent.
- Store spray gun with a nozzle attached to protect the needle.

For additional questions, contact your local 3M representative or: 1877 MMM CARS (666-2277)

See manual for additional use and safety information.

**WARNING!** Do not immerse spray gun or nozzles in cleaning solvents or gun washers. The maximum operational air pressure of this HVLP spray gun is 18 PSI.