



Korber Models

Scale Model Railroad Structures

165 E Main Street
Atlanta, IN 46031 USA

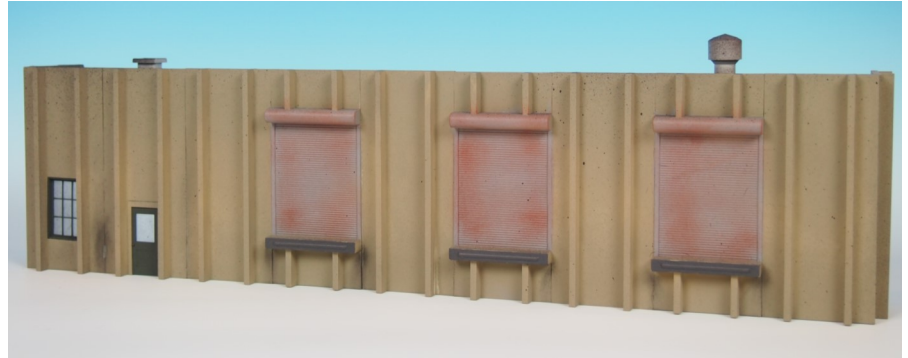
765-292-2044
www.korbermodels.com

Model TT2212 O Scale Phil's Cargo Instructions

Compiled by: Rich Redmond

Introduction




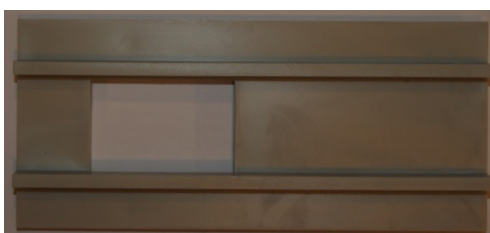



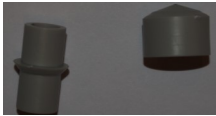
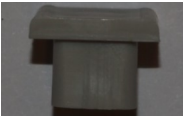

Congratulations, you have purchased the Korber Models #TT2212 Phil's Cargo. This structure represents thousands of buildings that could be seen along the tracks all across the nation. You can follow the simple, step by step instructions outlined in this document to easily assemble this great looking addition to your layout.



Before you start you may want to read through the instructions to get a feel for the things you will be doing, and the basic order in which they will be done. You are on your way to adding a great piece to your layout, so let's get started!

Parts list & Templates – (What's in the box)

Take a few minutes to locate all the parts in the box to make sure you have all the pieces you will need and that the quantities are right. If you are missing anything, please contact us so we can get you any of the missing items.

Qty	Description	Qty	Description
6	TT450 - 5" - (20 scale ft) Blank Wall 	1	TT350 - 5" - (20 scale ft) Wall with door opening 
3	TT150 - 5" - (20 scale ft) Wall with Loading Dock 	1	TT250 - 5" - (20 scale ft) Wall with window opening 
1	Injection Molded 9 pane window (1-1/2 x15/16) 	1	Injection Molded Entry Door 
2	Roof material 9-11/16" x 2-1/8" 	1	Sheet of clear plastic "Window Glass"
1	D809 - Round roof vent (style 3) 	1	D810 - Square roof vent 
2	12" - 1/4" x1/4" wall brace material 		

Materials needed – (What else might I need that is not included)

The Korber TT2212 Phil's Cargo, like any kit, requires a few additional items to complete the construction. We have included a list here, including some color and brand suggestions based on our experience; however you may use any product that fits the function. Please also note that some items are listed as options such that they either make assembly simpler, or are needed only for optional steps

- Flat paint, choice of colors, for doors, windows, trim
- Light grey or cement color paint for walls
- RustOleum camouflage flat spray paints work well for painting the structure, window frames, and doors
- Paper towels or soft cloth rags
- Cyanoacrylate (CA) glue. Also known as Super Glue, Gorilla™ super glue works well
- CA glue accelerator (optional) (turns any CA glue into quick set glue (optional)
- Medium grit sandpaper or emery board
- Testor's Dull-cote™ (optional)
- Small clamps (optional)
- Flat black or grimy black spray paint (optional)

1 - Parts preparation & painting

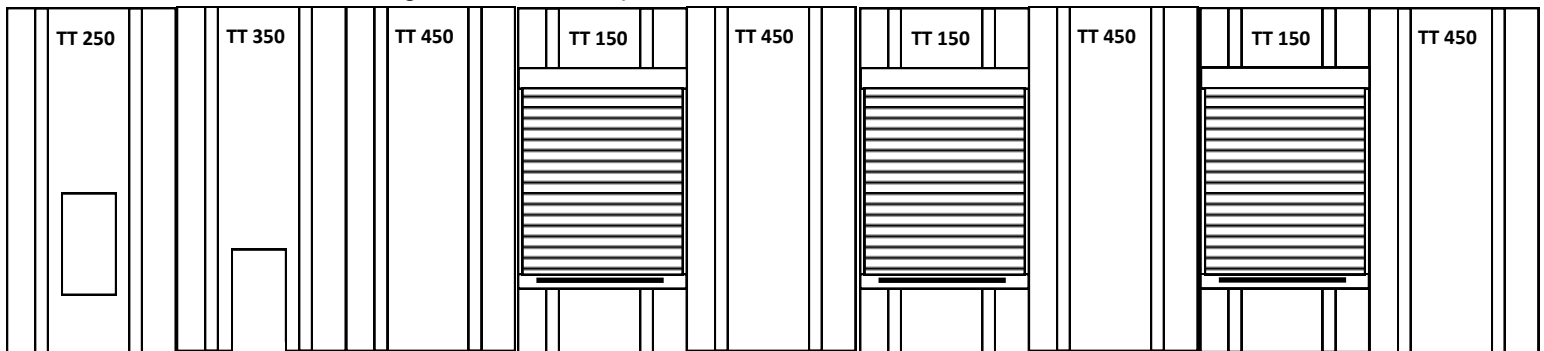
Look over all the molded parts and remove any flashing that might be left on them. Flashing is the thin pieces of the molding material that may be left in widow openings and along edges in the molded parts. This can quickly be removed with a razor type knife, a small file, or an emery board.

The parts in the kit can be assembled in the color they come in or optionally you can paint them to the final colors you select, it is much easier to do this step before you completely assemble them. The windows and doors come colored in gray, however you may want to apply a light coat of flat paint in the color of your choice, RustOleum Camouflage spray paints give a great look. Paint in a well ventilated area (outside is good).

If you choose to paint the walls it will be easier to do so in a later step

2 - Assembly of Front Wall

The assembly of the front wall of the structure is based on gluing together several modular sections to make a continuous front wall. Below is a front view drawing of the relationship of the modular wall sections use to make the front wall.



- Some sanding may be necessary. Rough up edges only where you need to glue
- Glue two sections together aligning them on a flat surface face up and let dry
- Repeat the last step but using the remaining modular wall sections to create a continuous front wall
- Optionally use clamps as necessary to hold pieces together
- Optionally you may want to use a brace across the back of several modules for added strength

All the wall sections come colored in a cement gray, however many modelers find a light coat of flat cement color or RustOleum Camouflage Khaki spray paint gives not only a great look, but also makes it easier to add weathering to the walls later on. In a well ventilated area (outside is good) apply a coat to the wall sections. Let the paint dry before moving to the next step

The roll up loading dock doors are molded into the wall sections, and should be painted to bring out the feature, a flat gray or silver paint works well. There are two suggested methods, one is to hand paint the area (use the photo on page one of the instruction as a reference), the second is to mask off the area you want to paint using blue painters tape, and spray a light coat of light gray flat primer on the area. Once complete let dry before moving to the next step.

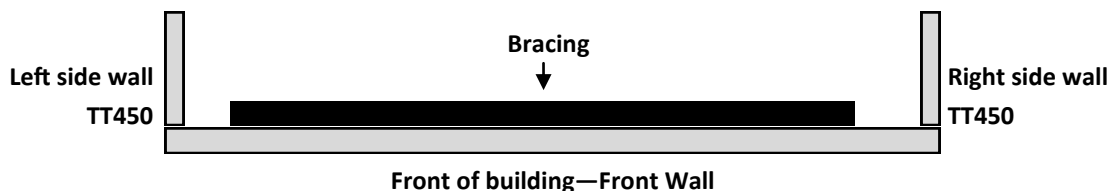
3 - Assembly & Install windows & doors

The windows & doors are made from injection molded plastic and will have a clear plastic sheet stock applied over the opening from the inside of the model to form a finished window.

- Carefully remove any flashing from the window & door frames
- If the window & door frames have not been painted, and if you would like to do so, paint them now and let them dry before moving to the next step
- Place the walls to which you want to add windows or door detailed (outside) side down on a flat surface
- The windows & doors are designed to insert in the opening from the back, or inside of the building
- Apply a small amount of glue around the edge of the frame and insert in the openings on the wall pieces
- Let the glued windows & doors dry before moving the wall sections to a vertical position to avoid glue running or the windows falling out
- Prepare to cut and glue small pieces of window material over the back of each window. Consider the following two window detailing option for the windows:
 - If you want the window panes to have a hazed affect, lightly sand the window material until you've achieved desired haze affect prior to cutting into small window pieces
 - You may also detail the windows with shades by covering the top portion of the window material with masking tape
- Cut window materials to fit over the back of each window & door – glue in place

4 - Assembly of Main Structure

The assembly of the main structure is based on making a simple “U” shaped structure when viewed from the top. There are three walls, the front (made in the last step) , and two identical side walls - TT 450. Below is a top view drawing of the relationship of the wall sections.



Placement of walls

- Some sanding may be necessary. Rough up edges only where you need to glue
- Take one sidewall and the front wall and line them up to make a right angle. The use of a small square is helpful. The front wall should overlay the edge of the side wall . Dry fit the walls to ensure a smooth seam is made. You will note the walls have small tabs in the back of the wall to assist in alignment, you may need to trim flashing material from the alignment tabs on the back. Glue the two wall sections together.
- Repeat the last step but using the remaining side wall and the front wall.
- Optionally use clamps as necessary to hold pieces together

5 - Install roof

The #TT2212 Phil's Cargo has a single level rectangular flat roof made from a black material. The intent is to glue this piece to the molded cleats which are about 1/4" below the top of the wall sections of the building.

- The two black roof material parts measuring 9-11/16" x 2-1/8" is designed fit inside the three walls and rest on the molded cleats in the side walls. Glue or tape (on the underside) the two sections together along the 2-1/8" end to make one continuous roof 19-3/8" x 2-1/8". You can glue in this place. You may want to paint the upper inside section of the walls black to match the roof material.
- The D810 square roof vent can be optionally painted, and glued in place on the roof. The D809 Round roof vent needs the two parts glued together prior to paint or placement. Once assembled, glue in to place on the roof.

6 - Final Detailing – Weathering

Your Korber Models #TT2212 Phil's Cargo is now assembled and ready for placement on the layout. You may wish to provide some additional weathering before you install it as a building next to the tracks would be a heavily used structure with a layer of soot, and would rarely look brand new.

To add a weathered look, spray the entire model with flat black from a distance. This will give a sooty look to the building. Once done you can spray the completed structure with Dullcote to remove any gloss or shine.

If you choose not to detail the inside of your structure, or light it, an effective and quick way to make a good looking background building is to cover the widows with black construction paper from the inside. This creates a dark building look that is more desirable than the view in to an otherwise empty shell of a building.