



# Korber Models

Scale Model Railroad Structures

100 Castleberry Court #178  
 Milford, OH 45150 USA  
 513-239-1908  
 info@korbermodels.com  
 www.korbermodels.com

## Model 704 O Scale Steel Storage Tank with dual tops & flashing red LED

### Instructions

Compiled by: Rich Redmond

## Introduction



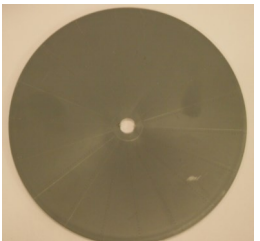



Congratulations, you have purchased the Korber Models #704 Steel Storage Tank with dual tops and flashing red LED. This tank represents thousands of similar units that could be seen from coast to coast to store water or oil for processing or industrial plants to municipal water or even dry bulk storage. This kit makes one tank—with either a flat or domed top—8.5" tall by 4" wide (16x34 scale feet). You can follow the simple, step by step instructions outlined in this document to easily assemble this great looking addition to your layout.

Before you start you may want to read through the instructions to get a feel for the things you will be doing, and the basic order in which they will be done. You are on your way to adding great detail to your layout, so let's get started!



## Parts list & Templates – (What's in the box)

Take a few minutes to locate all the parts in the box to make sure you have all the pieces you will need and that the quantities are right. If you are missing anything, please contact us so we can get you any of the missing items.

Qty	Description		Qty	Description	
8	Ring Section (top and side view)	 	1	Flat Roof Section (option 1)	
1	Domed Roof Section (option 2)		1	Flashing LED assembly (6-19 volts AC or DC operation)	
1	Peel and stick logo sheet (includes one each of the pictured)				
					

## Materials needed – (What else might I need that is not included)

The Korber #704 Steel Storage Tank, like any kit, requires a few additional items to complete the construction. We have included a list here, with some color and brand suggestions based on our experience; however you may use any product that fits the function. RustOleum™ camouflage flat spray paints work well for painting the kits (Black) Other brands work well for silver or grey, including Floquil™ Old Silver, Cyanoacrylate (CA) glue, also known as Super Glue, Gorilla™ super glue works well, CA glue accelerator (optional) (turns any CA glue into quick set glue), Testor's Dullcote™ (optional) Masking Tape (Blue Painters tape works well) and small hand tools.

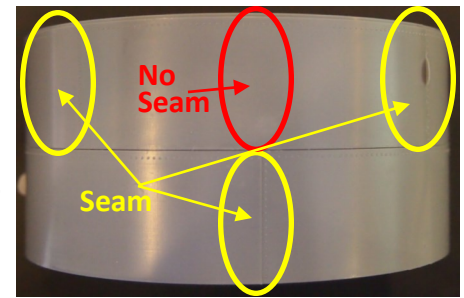
## 1 - Parts preparation

Look over all the molded parts and remove any flashing that might be left on them. Flashing is the thin pieces of the molding material that may be left along edges in the molded parts. This can quickly be removed with a razor type knife, a small file, or an emery board.

The parts are molded in a grey color that is acceptable for a finished tank in many cases, however if you want to paint it a different color we suggest you do that after the tank is assembled.

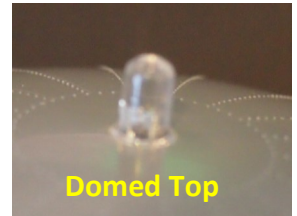
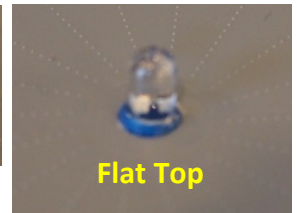
## 2 - Assemble the Main Tank Structure

- The ring sections are to be nestled together to create a taller—8 segments—tank. Test fit the sections and remove any flash before going to the next step.
- The vertical seams of each section should be staggered with the course below and above it, by centering the seam between the seams of the segment above and below it.
- Place two segments together, staggering the seams as above, and apply the glue to the inside seam of the tank. This will allow capillary action to draw the glue into the seam, and avoid overflow that would be exposed to the outside of the tank. Carefully handle the parts to avoid finger marks on the outside of the tank.
- Once the two segments are dry, repeat the preceding step six more times to make a eight segment tank. Note the small lip on the tank faces down, the roof will not fit properly if this lip faces up.



## 3 - Install LED in Roof Section

- The kit includes two choices for the roof top; a flat top, typically used on water and oil tanks, and the domed top which was often used in industrial and refinery tanks. Select the one you want to use.
- **Flat Top:** If you selected the flat top, it already has a opening that the LED can go through. This opening is slightly larger than the LED, so you may choose to carefully wrap tape around the very bottom of the led to build-up or enlarge the diameter of the LED to fit snugly in the hole. Typically 3-4 layers is all you will need. Once this tape processes is complete, insert the LED in the opening such that most of the LED is exposed to the outside (side with the rivet marks in the top) and glue in to place from the back or inside of the roof to avoid glue marks. Once dry you can move to the install roof section.
- **Domed Top:** If you selected the domed top, it needs a small hole added to the top to create an opening that the LED can go through. Carefully, using a drill, create an opening that is 15/64 wide—this is a standard drill bit size. Insert the LED in the opening such that most of the LED is exposed to the outside (side with the rivet marks in the top) and glue in to place from the back or inside of the roof to avoid glue marks. Once dry you can move to the install roof section.



## 4 - Install Roof

- The roof top is designed to overlap the side of the tank walls slightly to create a clean seam.
- The roof top has a small lip around the bottom side of the outer edge, about 1/16" in from the edge. This lip is designed to fit inside the tank side walls. Dry fit in place to ensure the seam lines up. If it appears that two lips are hitting and a gap is seen, flip the tank over, the lip on the tank wall should face down.
- Once the dry fit has been successful, apply a small amount of glue to the inside edge of the side walls, and attach the roof to the top of the side walls of the tank structure.



## 5 - Paint the Tank

The Korber Steel Storage Tank comes molded in a grey color that many find ideal for their layout, however if you want, other colors were used such as black, white, silver or light grey. Prior to painting carefully use masking tape (blue painters tape is good) to completely cover the LED on the top of the tank. In a well ventilated area (outside is good) apply an even coat to the outside of the entire structure.

Once the paint is dry, you can apply the logo label of your choice to the tank. The labels must be cut out of the strip that they come in. Carefully using scissors or a hobby knife, trim the excess paper label using the logo circular border as a guide. Once trimmed, simply remove the peel-able backing and place the logo in the desired position on the tank, pressing it firmly in place to create a good bond, and work out any wrinkles or bubbles.



## 6 - Final Detailing – Weathering

Your Korber #704 Steel Storage Tank is now assembled and ready for placement on the layout. You may wish to provide some additional weathering before you install it as it would rarely look brand new.

To add a weathered look, spray the entire model with flat black from a distance. This will give a sooty look to the tank. Once done you can spray the completed structure with Dullcote to remove any gloss or shine. Once done you can remove the tape covering the red LED on the top.

The LED assembly in this kit is designed to take a wide variety of power connections, and includes a resistor, capacitor and bridge rectifier to be able to be feed from 6-19 volts AC or DC or DCC. This means you can power it from track power or an accessory power supply as you desire.