



3-STAGE UNDER-SINK FILTRATION SYSTEM

Quick-Start Guide

ClearlyFiltered®



Congrats & Welcome

Congrats on your new Clearly Filtered 3-Stage Under-Sink Filtration System. You've made a wise investment in your health.

Like you, we have high standards for our water. That's why we developed your system with our renowned Affinity Filtration® Technology; the most powerful filtration technology on the market. At last, you can finally stop worrying about what's in your water.

In this short guide, we'll show you how to upgrade your water from questionable to clean, reveal the benefits of our breakthrough technology, and ensure you make the most of your Clearly Filtered experience.

TABLE OF CONTENTS	<i>page</i>
What Makes Us Superior	3
How Affinity® Filtration Technology Works	4
Our 3-Stage Filtration System Explained	5
Filter Prep & Replacement	7
Tested, Trusted, & Transparent	10
Setup	11
Quick Tips	20
Help & Resources	21
Get More Clean Water	22
Warranty	23

What Makes Clearly Filtered Superior?

The Clear Difference

Others focus on taste. **We focus on safety.**

Others reduce contaminants. **We remove them.**

Others say cleaner. **We say cleanest.**

By The Numbers

232+

Targets and removes more than 232 contaminants — while allowing beneficial minerals to pass through.

<15

Easy installation in less than 15 minutes.

No plumber, power tools, separate tank, or second faucet required.

2000

Premium filter cartridges feature a space-saving design, **extended 2000-gallon filter life**, and built-in shut-off valves for easy replacement and minimal maintenance.

How Affinity® Filtration Technology Works

In 2017, Affinity Filtration Technology made waves as the new standard for water safety.

Thanks to our decade-long journey developing the technology in your filter, “better tasting” and “better smelling” water is no longer the gold standard of safety. After all, simple carbon or charcoal filters focus only on removing unpleasant odors and tastes. Their basic technology leaves you vulnerable as hundreds of harmful contaminants that can’t be seen, smelled, or tasted remain in your water.

Our filters never fall short. The breakthrough technology inside targets and **removes up to 99.9% of 232+ contaminants**. This includes those dangerous chemicals, metals, and toxins that most filters miss. Here’s how our technology transforms your water from polluted to pure.

In its simplest form, Affinity® Filtration Technology leverages two cutting-edge components:

- A dynamic physical structure:** The maze-like interiors of our filters require water to pass through twists and turns to give the filter more time to extract contaminants. That alone means superior performance.
- A potent contaminant magnet:** The precise and powerful collection of unique medias in our filters separate the good and the bad. They identify and bond to dangerous contaminants, and do not target beneficial minerals.

Ultimately, Affinity Filtration Technology recognizes what should stay and what should go. Its one-two punch of structure and magnet-like medias helps snatch up dangerous chemicals, metals, and toxins other filters can’t.

Our 3-Stage Filtration System Explained

Our 3-Stage Under-Sink Filtration System contains the most powerful filtration technology on the market. Your system is made up of 3 filters that each serve a unique purpose. Together, they deliver a continuous supply of cold, clean, and safe water straight from your faucet.

Here's a brief breakdown of the 3-stage system:

Stage 1 Cartridge: This sophisticated coconut carbon pre-filter minimizes sediment and particles with various micron sizes to prime water for advanced filtration in Stages 2 and 3. The hazards extracted here impact color, odor, and water tastes, so you can see, smell, and experience the difference.

Stage 2 Cartridge: Built to eliminate hidden heavy metals, herbicides, pesticides, and more, this advanced filter removes the covert chemicals and contaminants that most filters miss including lead and radiation.

Stage 3 Cartridge: The breakthrough technology inside this filter removes superior levels of fluoride without relying on typical Reverse Osmosis technology that blindly removes beneficial minerals and produces excess wastewater.



Filter Prep & Replacement

Your system's filters work synergistically to provide the cleanest water straight from your faucet.

The filter set must be primed before first use to deliver superior results. Then they must be replaced regularly to maintain performance.

Priming The System

Every filter set — both new and replacement — **must** be primed before first use to perform properly. Priming is the process of preparing the filters by forcing running water through the system. This simple step pushes air out of the filters, loosens up the filtration media, and ensures the system's ready for water to flow through so contaminants are captured and eliminated.

.....
*Refer to the **'Setup'** section on page 11 of this guide for detailed priming instructions.*

Replacing Your Filter

To maintain peak performance, filter changes are recommended at every 2000 gallons filtered*.

If you are not tracking gallons, follow the guidelines below for replacing your filters:

4+ People: Replace filter every 9 months.

3-4 People: Replace filter every 12 months.

1-2 Person: Replace filter every 15 months.

**Filter life can be impacted by water quality.*

Purchase replacement filters and **sign up** for **our free filter** subscription service at ClearlyFiltered.com/SinkFilters.

Filter Subscription

Keep your system performing its best by regularly replacing the filters. Enroll in our filter subscription service to ensure you always have replacements ready and you never forget to reorder. Filters are mailed straight to your doorstep at no additional cost and you're rewarded with a discount on every set.

Subscribing is the simplest, quickest, and most cost-effective way to guarantee you have clean water year-round and to make the most of your Clearly Filtered experience.

Additional benefits:

- **Save 10%** on every filter.
- **Free shipping** (USA).
- Pick your **preferred shipping frequency**.
- **Pause, skip, and adjust shipping frequency, or cancel at any time.***
- **No long-term contract required.**

**Go to ClearlyFiltered.com/Subscription for more information.*

Get Enrolled

If you purchased your system without a filter subscription and do not need a set of replacement filters immediately, please contact our support team to create an account and get enrolled. Our support staff is available Monday-Friday 9am-4pm PST (excluding holidays).

4 Easy Ways To Get Enrolled:

- 1. **Select “Subscribe to Filters & Save” during checkout** of your next purchase.
- 2. **Email** our support team at info@clearlyfiltered.com.
- 3. **Live chat** with a team member at clearlyfiltered.com (M-F 9am-4pm PST).
- 4. **Call** our support team at **+1 (877) 876-2740** (M-F 9am-4pm PST).

Manage Your Subscription Online

To manage your filter subscription, activate your Clearly Filtered account with the email address you used to purchase your system. Then go to ClearlyFiltered.com/Account to log in. Here you can update your address and payment information, pause, skip, or adjust shipping frequency, and cancel your subscription. As a subscriber, you always have complete control of your account.

Tested, Trusted, & Transparent

Our filters have been independently tested to the rigorous NSF and EPA standards by accredited labs. Drink up and rest easy knowing you are protected by the best filter on the market.

The EPA regulates less than 100 tap water contaminants. **We remove 232 contaminants and counting. And we test them at 3-10 times the legal limit (when a limit exists) to guarantee performance in all conditions.**

We also keep an eye on unregulated and emerging contaminants. When a new or emerging contaminant is discovered, we look to test our filters and share the results on our website.

The contaminants we target and remove can be linked to everything from cancer, thyroid conditions, and bone disease to liver, kidney, and reproductive problems. Our ongoing commitment to clean water ensures you can count on us to cover your health, your family, and your future.



Tested



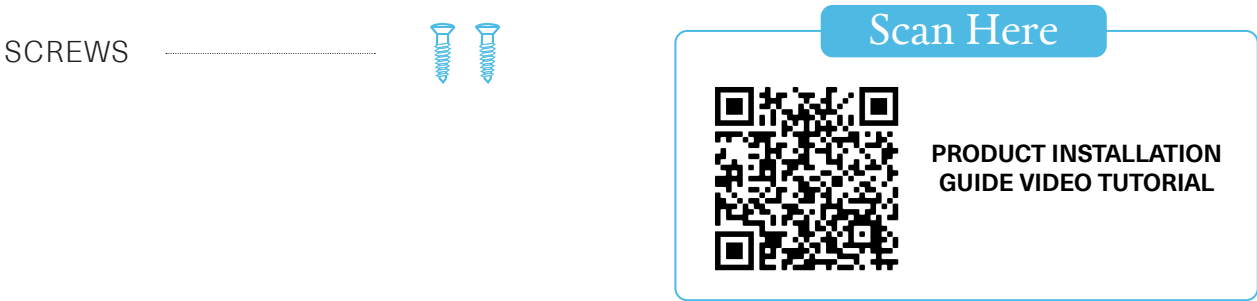
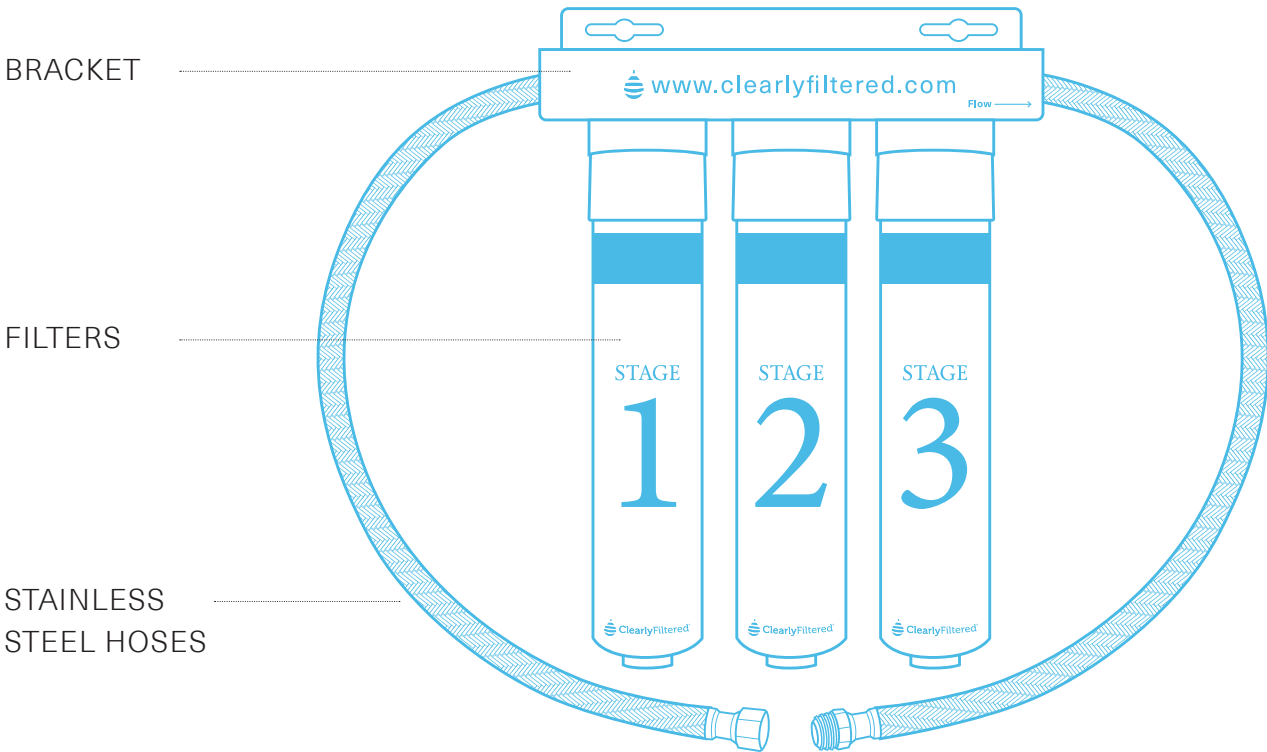
Trusted



Transparent

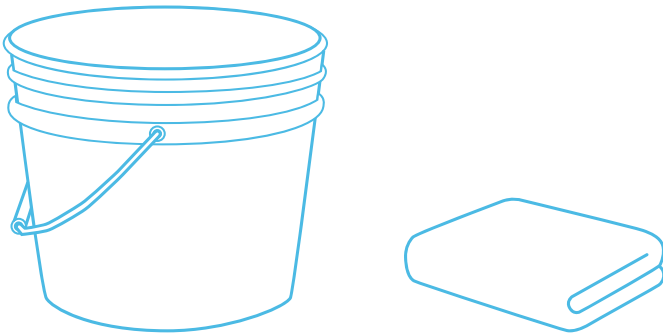
Setup

COMPONENTS



STEP 1

GATHER YOUR TOOLS



BUCKET or TOWEL



FLASHLIGHT or HEADLAMP



WRENCH

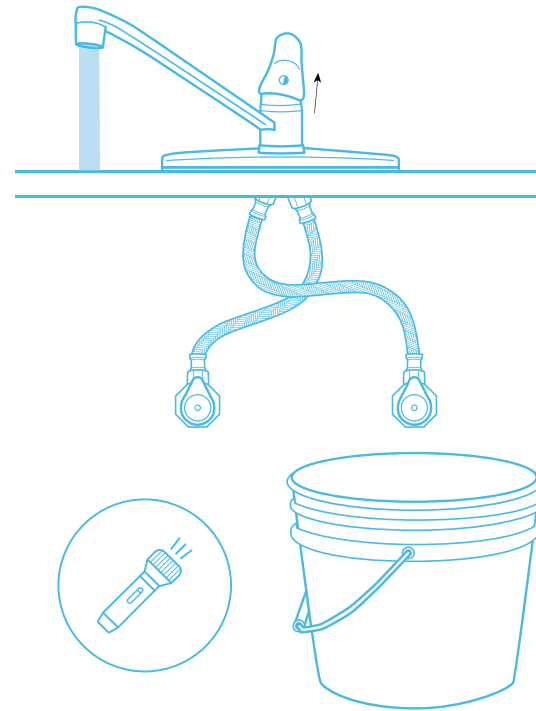


PHILLIPS HEAD SCREWDRIVER
if you plan to mount the system.

STEP 2

PREP

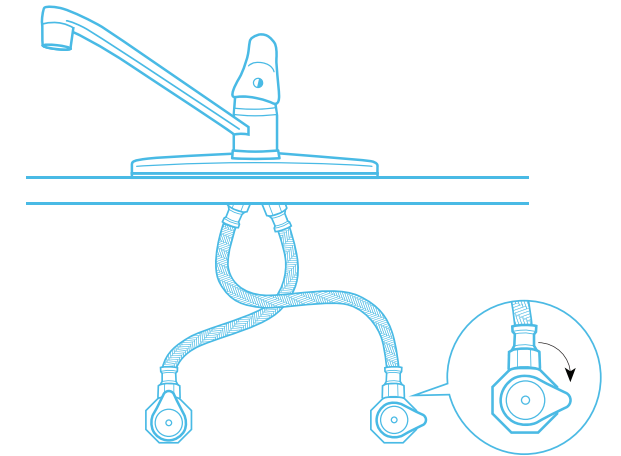
- 1 Turn on your faucet so a steady stream of cold water flows into the sink.
- 2 Use a flashlight or headlamp to locate the 2 water valves under your sink.
- 3 Place a bucket or towel below the valves.



STEP 3

SHUT OFF COLD WATER SUPPLY

- 1 Locate the cold water valve. It is typically the valve on the right and can sometimes be identified by a blue handle.
- 2 Shut off the cold water supply by turning the valve's handle or knob clockwise until tight.
- 3 After you've shut off the cold water supply, turn off your faucet.

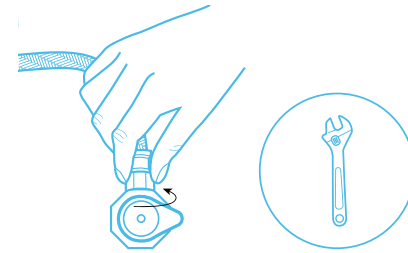


STEP 4

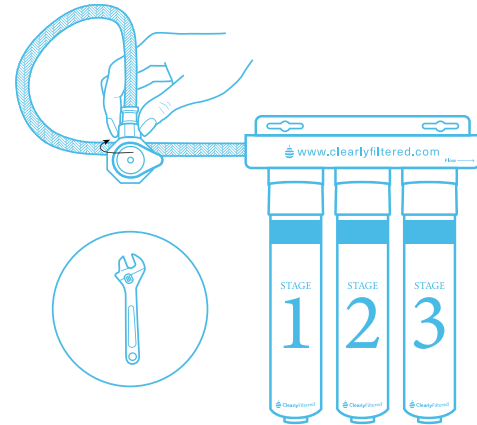
CONNECT FILTER TO WATER LINE

Refer to the diagram on the front of the bracket to guide you during the following steps.

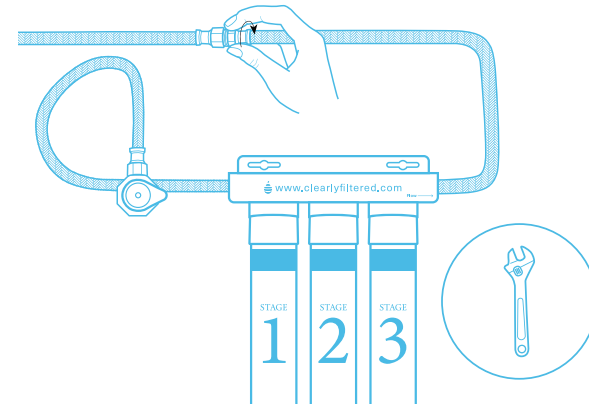
- 1 Disconnect the cold water line from the water valve by twisting with your hand or a wrench.



- 2 Connect the stainless-steel hose attached to the filter's 'inlet' end near filter cartridge 1 (female fitting) to the water valve (male fitting). Tighten with a wrench to create a seal.



- 3 Connect the stainless-steel hose attached to the filter's 'outlet' end near filter cartridge 3 (male fitting) to the water line (female fitting). Tighten with a wrench to create a seal.



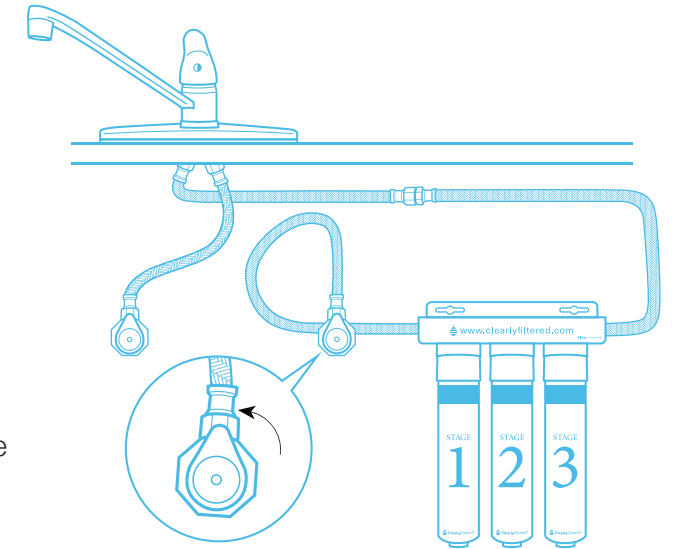
STEP 5

TURN ON COLD WATER SUPPLY

- 1 Turn the cold water valve's handle back to its original position to turn the cold water supply on.

- 2 Check for leaks. If you see any leaking, shut off the cold water supply then reconnect the system to the water line and ensure all connections are snug.

- 3 If leaking continues, wrap the connections in plumber's tape for a stronger seal.

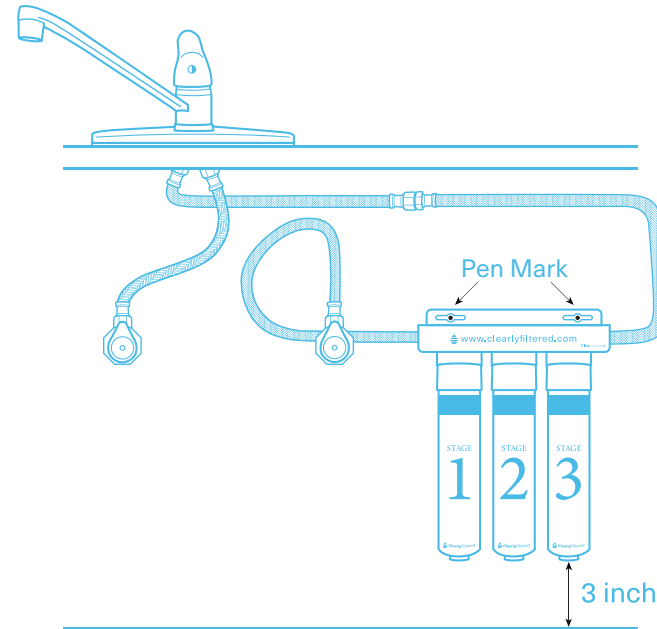


STEP 6

MOUNT SYSTEM (OPTIONAL)

Mounting is optional since the system's performance is not dependent on placement or orientation. If you don't mount your system, it can sit on the ground or lean on the wall.

- 1 Position the bracket so there's at least 3 inches of clearance below the bottom of the filter cartridges and the ground or wall.

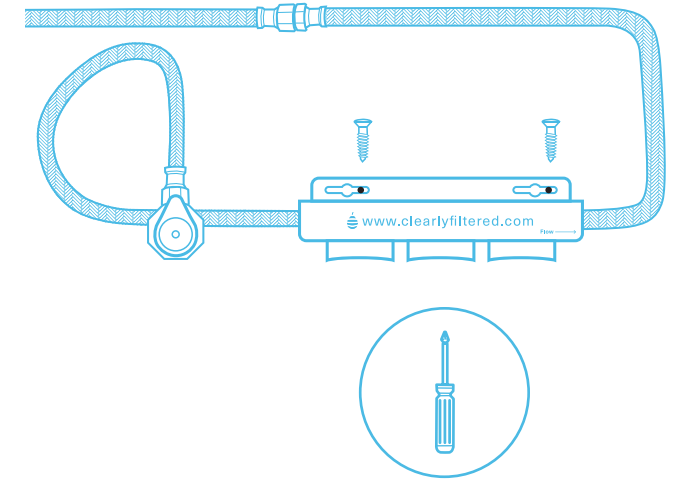


- 2 Mark the bracket's two eyelets with a pencil.

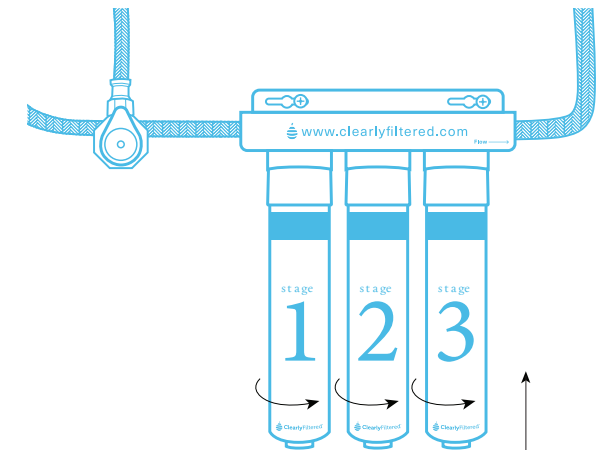
- 3 To lighten the load, remove the filter cartridges from the bracket by twisting counterclockwise.



- 4 Use a drill or screwdriver to install the included mounting screws at the eyelet marks. Hang the bracket from the mounting screws.



- 4 Reattach the filter cartridges to the bracket by hand-twisting them in sequential order, with cartridge 3 sitting directly below the word "flow" on the bracket. Refer to the numbers on each cartridge and the diagram on the front of the bracket to guide you.

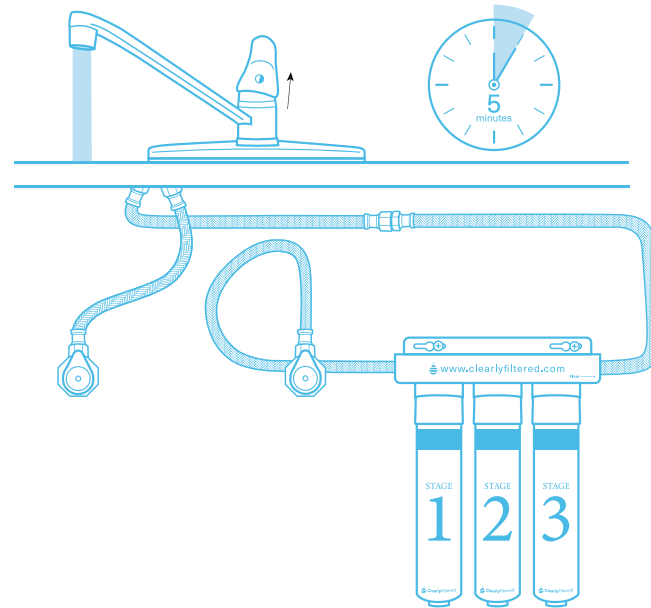


STEP 7

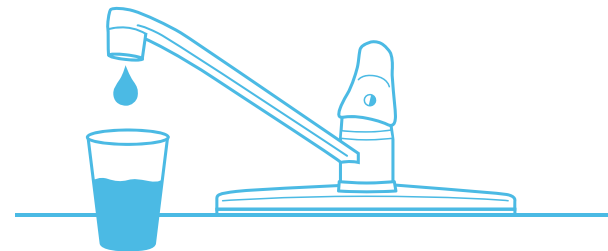
PRIME & ENJOY (DO NOT SKIP)

To ensure your system works efficiently and effectively, you must prime it prior to first use.

- 1 Run cold water for 5 minutes or until the water runs clear with few, if any, bubbles.



- 2 Drink up and enjoy the convenience of clean water on demand.



Quick Tips

The system is built to filter cold tap water only. Do not connect it to the hot water line.

The system is designed to filter tap water or properly disinfected well water. It does not target pathogens.

The system has 3/8" threaded fittings on both of the provided filter hoses, making it compatible with standard 3/8" braided water lines found under your sink. Adapters or splitters are required for any other size line.

Superior filtration takes time. Cold water pressure can be reduced once the system is installed.

You do not have to mount the system. However, it can be mounted vertically or horizontally.

Filter cartridges have leak-proof heads and built-in shut off valves so there's no mess during replacement.

Replace all 3 filter cartridges at every 2000 gallons filtered. For most customers, this is once a year. See the 'Filter Prep & Replacement' section of this guide for more details.

All 3 filter cartridges have the same lifespan. They must be installed and replaced together.

Go to [ClearlyFiltered.com/SinkFilters](https://www.clearlyfiltered.com/SinkFilters) to get replacement filters and learn more about our free filter subscription service.



Help & Resources

Need Help With Your Filter?

We have a friendly support team and a library of online resources dedicated to you. Here are 4 easy and convenient ways to get help:

- Visit our Help & FAQs page at help.clearlyfiltered.com.
- Email our support team at info@clearlyfiltered.com.
- **Live chat** with a team member at clearlyfiltered.com.
- Call our support team at **+1 (877) 876-2740**

**Business Hours: M - F 9am-4pm PST; excluding holidays.*

Get More Clean Water

Experience Our Full Line of Premium Products

Can't get enough clean water? Visit **ClearlyFiltered.com** to learn more about our full line of premium products.

We have filters for everything including **bottles, pitchers, and refrigerators**, so you can enjoy the benefits of clean water at home and on the go.



Filtered Pitcher



Replacement Filters



Filtered Bottles



Under Sink Filter



Fridge Filter

Warranty

All Clearly Filtered products are manufactured to the highest standard and are individually inspected prior to shipping.

We offer a limited lifetime warranty on all items:

To view our full policy, please visit our warranty page at [**ClearlyFiltered.com/Warranty**](https://ClearlyFiltered.com/Warranty)

Join the Movement:

Stay clear on the latest and greatest by visiting our website at **ClearlyFiltered.com**

Connect with us on social media to tap into our Clearly Filtered family:



When do I change my filters?

Your filter set must be replaced regularly to deliver superior results. Based on proven performance data, tracking usage is the best way to determine the right time for a filter set change.

Use the chart below to estimate your usage and find out when to change your filter:

Change Tracker Chart

Step 1. 1. Determine how many people use the filter (Bottom of chart).

Step 2. Estimate how many glasses of water each person uses per day (Left side of chart).

Step 3. Trace your inputs to determine when you'll need a filter change (Middle of chart).

*8 glasses
of water is the
physician-recommended
daily intake

Daily glasses of water per person	10+ GLASSES	15 MONTH	12 MONTH	9 MONTH	9 MONTH	9 MONTH	9 MONTH
	9-10 GLASSES	15 MONTH	12 MONTH	12 MONTH	9 MONTH	9 MONTH	9 MONTH
	7-8* GLASSES	15 MONTH	15 MONTH	12 MONTH	12 MONTH	9 MONTH	9 MONTH
	5-6 GLASSES	15 MONTH	15 MONTH	12 MONTH	12 MONTH	9 MONTH	9 MONTH
	3-4 GLASSES	15 MONTH	15 MONTH	15 MONTH	12 MONTH	12 MONTH	9 MONTH
	1-2 GLASSES	15 MONTH	15 MONTH	15 MONTH	15 MONTH	12 MONTH	9 MONTH
		1 PERSON	2 PEOPLE	3 PEOPLE	4 PEOPLE	5 PEOPLE	6 PEOPLE

of people drinking from the water filter



Time to change my filter

Use this card to help you know when the time has come to replace your filter set. Simply record the date you install the filter set. Then record the replacement date that's best for you using the Change Tracker Chart on the adjacent page.

Filter Installation Date

Date 1

Date 2

Date 3

Date 4

Date 5

Date 6

Filter Replacement Date

Date 1

Date 2

Date 3

Date 4

Date 5

Date 6

