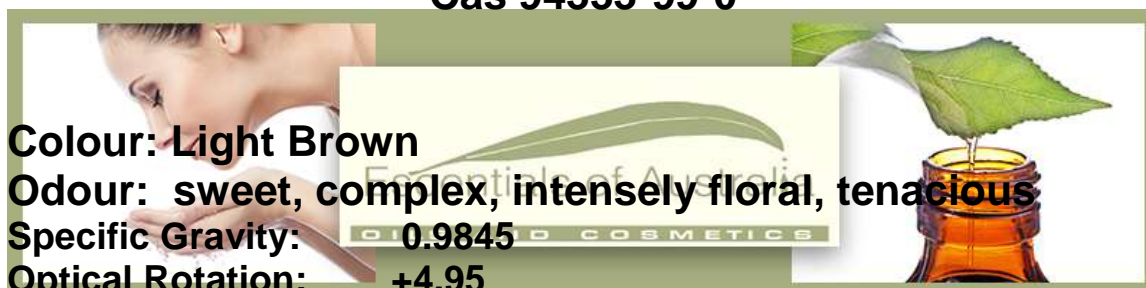




Escentials of Australia

Certificate of Analysis

Red Champaca Absolute
Botanical: *michelia champaca*
Part of plant used: flowers
Origin: farmed
Cas 94333-99-0



Colour: Light Brown
Odour: sweet, complex, intensely floral, tenacious
Specific Gravity: 0.9845
Optical Rotation: +4.95
Refractive Index: 1.5100
Boiling Point: 130 Deg C

HEAVY METAL TESTS SPECIFICATIONS STANDARDS

Lead: Pb (mg/kg or ppm)	< 10 ppm	CONFORMS
Arsenic: As (mg/kg or ppm)	< 2 ppm	CONFORMS
Mercury: Hg (mg/kg or ppm)	< 1 ppm	CONFORMS

Batch No 12...
Shelf Life 3 years plus
Retest after 24 months
Compiled Oct 2019