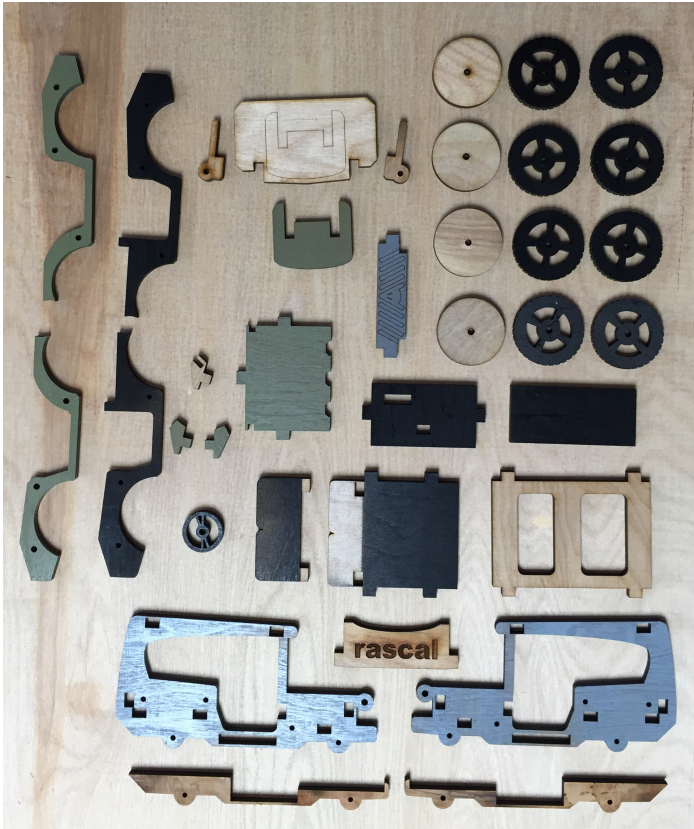


CONSTRUCT A TRUCK USA

ASSEMBLY INSTRUCTIONS FOR

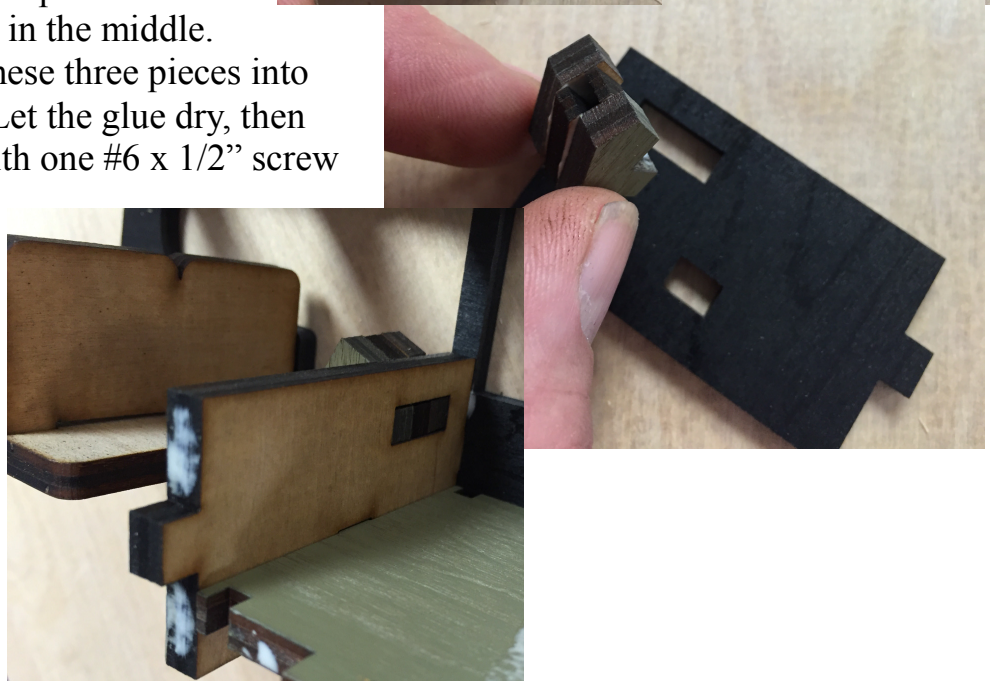
The RASCAL Kit



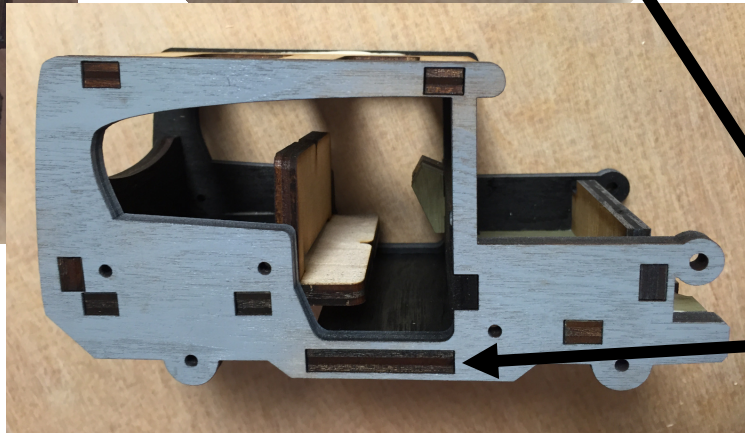
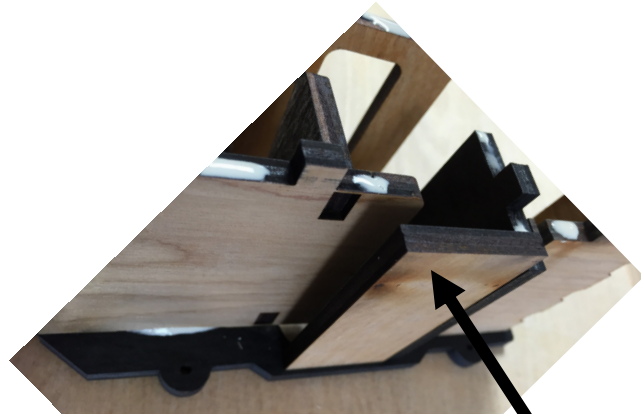
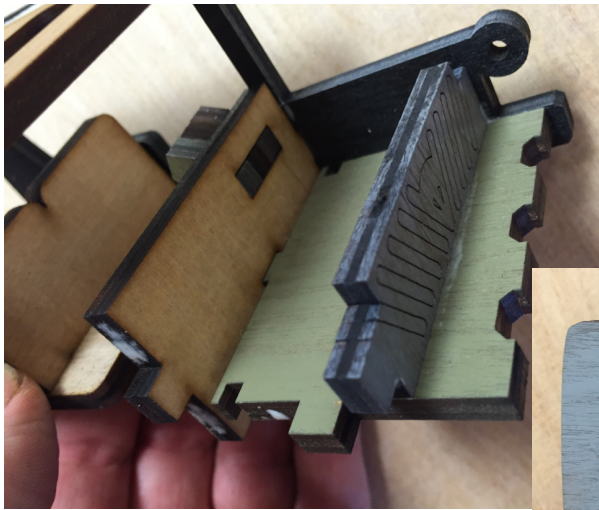
1. Begin by laying out the 36 wooden pieces shown.
2. Paint some of the wooden pieces, if desired. The suggested paint scheme shown utilizes three colors of spray paint: grey, black, and olive green. Note: some of the pieces are left natural (unfinished).
3. Glue the Engine Hood Hinges to the underside of the Engine Hood. (The outline of the Hood AirScoop is on the top surface.) Allow the glue to setup for about 3 minutes.
4. Then glue the Air-Scoop onto the top surface as shown.



5. Glue the three steering column pieces together, with the slotted piece in the middle. Glue and insert the tabs on these three pieces into the Firewall slot, as shown. Let the glue dry, then install the Steering Wheel with one #6 x 1/2" screw
6. Glue and insert the tab of the Engine Compartment Floor into the slot of the Firewall.
7. Then glue this assembly into one of the Body Side Panels.



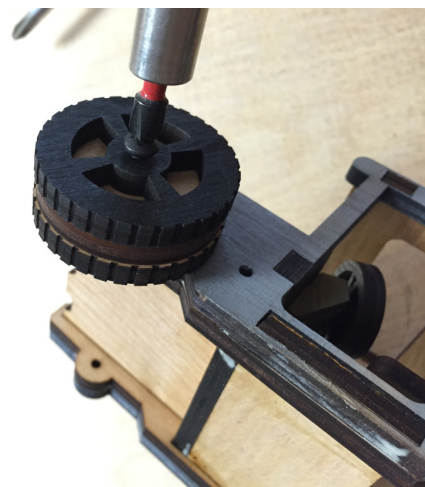
ASSEMBLY INSTRUCTIONS FOR The RASCAL Kit



8. Glue and assemble the Double Sunroof, the Tailgate Name-Plate, the Rear Floor Deck with Seat Back.
9. Then glue and assemble the other Body Side Panel to complete the Body Assembly.
10. Slide the Middle Floor Deck through the slots in the Body Side Panels without any glue
11. Apply glue to the Body Side Reinforcement Rail. Also apply glue to the underside of the Middle Floor Deck.



12. Then attach the front and rear Wheel Assembly (two wheels with tread pattern on either side of one plain wheel). Use the #6 x 1" long screw with a flat washer and tighten the screw so that it clamps the Reinforcement Rail tightly against the Body Side Panel. (Be careful not to over-tighten; it can strip the



wooden hole.)

13. Glue and install the Reinforcement Rail on the other side, using the other two Wheel Assemblies and screws to clamp the part securely. Set the model aside to dry.

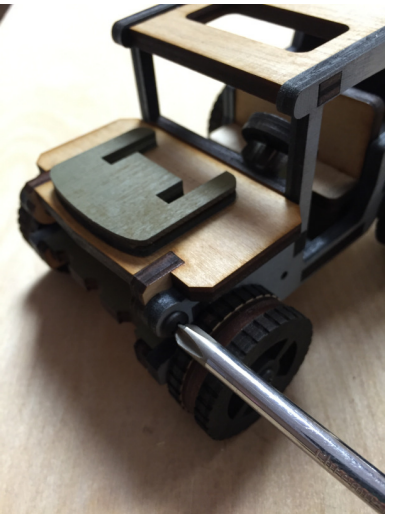
ASSEMBLY INSTRUCTIONS FOR The RASCAL Kit



14. Glue the two Left Side Fender Pieces together and use the #6 x 1/2" screws to clamp the two pieces together. Hold the front fender tips together or use masking tape until the glue sets up.

15. Glue and assemble the Right Side Fender Pieces. Set both assemblies aside to dry.

16. Install the Engine Hood Cover with two #6 x 1/2" screws (do not over-tighten).



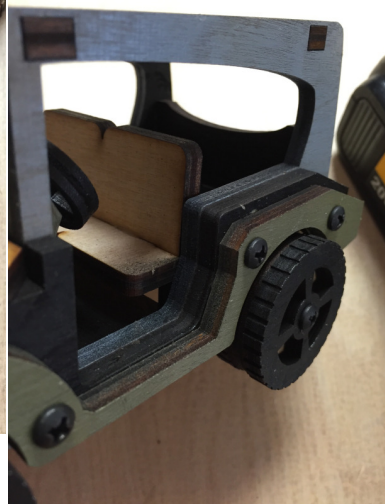
17. Carefully back out the screws in the Fender Assemblies until they are flush with the inner surface.



18. Apply glue and line up the Fender Screws with the holes in the Body Side Panels.



19. Re-tighten the screws to help clamp the Fender Assemblies in place while the glue dries.



ASSEMBLY INSTRUCTIONS FOR
The RASCAL Kit

20. Loosen the Axle Screws just enough to allow the wheels to turn freely.



Congratulations!
You're ready to roll!

*All designs, descriptions, images, and processes are copyright. Construct A Truck USA © 2017
Designed and manufactured in Michigan
www.constructatruckusa.com*