



RIPRACER FENDER KIT

INSTALLATION GUIDE

© 2022 Juiced Bikes All Rights Reserved R20220701-003

INTRODUCTION

The RipRacer Fender Kit is designed to keep water and dirt off you and your e-bike when riding in wet conditions. This document will guide you through the process of installing the Fender Kit on your RipRacer e-bike. The removal of the front and rear wheels are not required for the installation of this kit. However you will need to completely deflate the rear tire to install the rear fender. If you are also installing a rear rack, it is recommended that you first install the rear fender.



Tools Required

To complete the installation of this kit, the following tools are needed. Installation of the fender kit will also require a second person's assistance.

- 4 mm allen wrench (included)
- 5 mm allen wrench (included)
- 10 mm Open Wrench (included)
- 2 zip ties (included)
- Pliers
- Scissors
- Air Pump

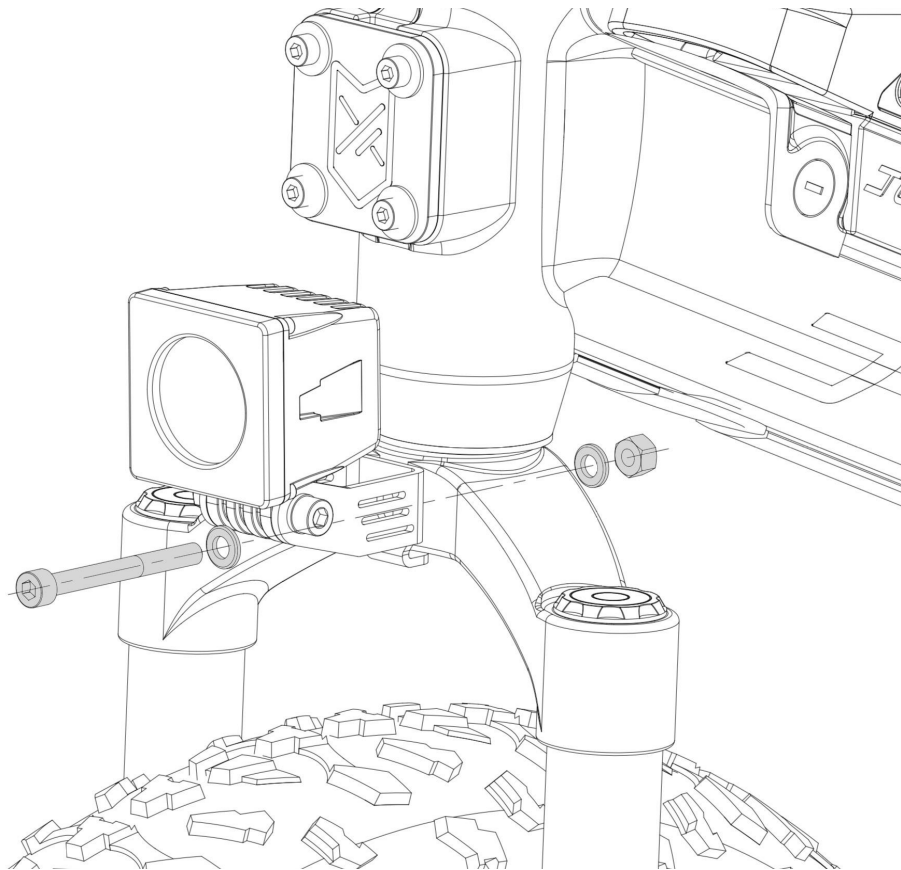
FRONT FENDER INSTALLATION

Notes

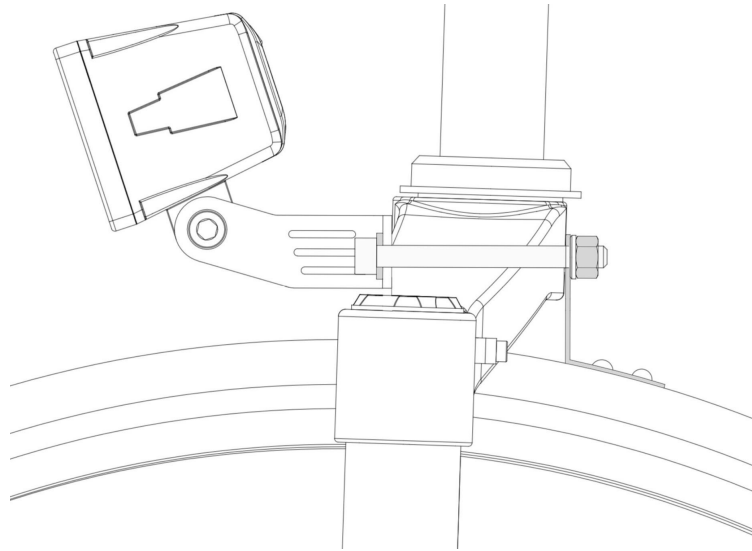
- Be sure your e-bike is powered OFF and the battery is removed.
- Be sure the e-bike is supported so it does not move or tip while working on it.
- The front wheel does not need to be removed to complete the installation of the front fender.

Installation Steps

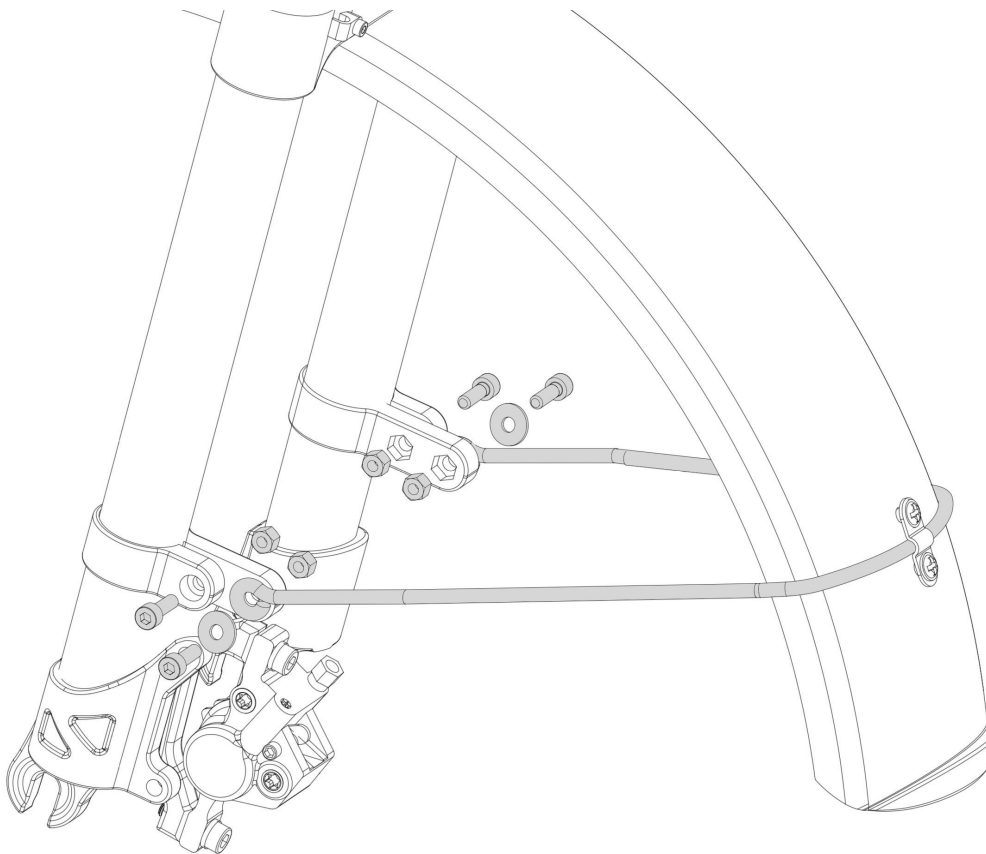
To install the front fender, you will need to remove the headlight bracket nut.



- Using a 4mm allen wrench, reach the screw from the front and use the 10mm wrench to keep the nut in the back from spinning.
- Remove the washer and nut on the back of the fork. You do not need to completely remove the headlight bolt. Use one hand to hold the headlight and slide the fender tab onto the bolt as shown below.



- Re-install the washer and nut to secure all items together. Be sure the headlight is lined up before finishing tightening the assembly.



Note: The wheel has been removed in the image to show the hardware and their locations.

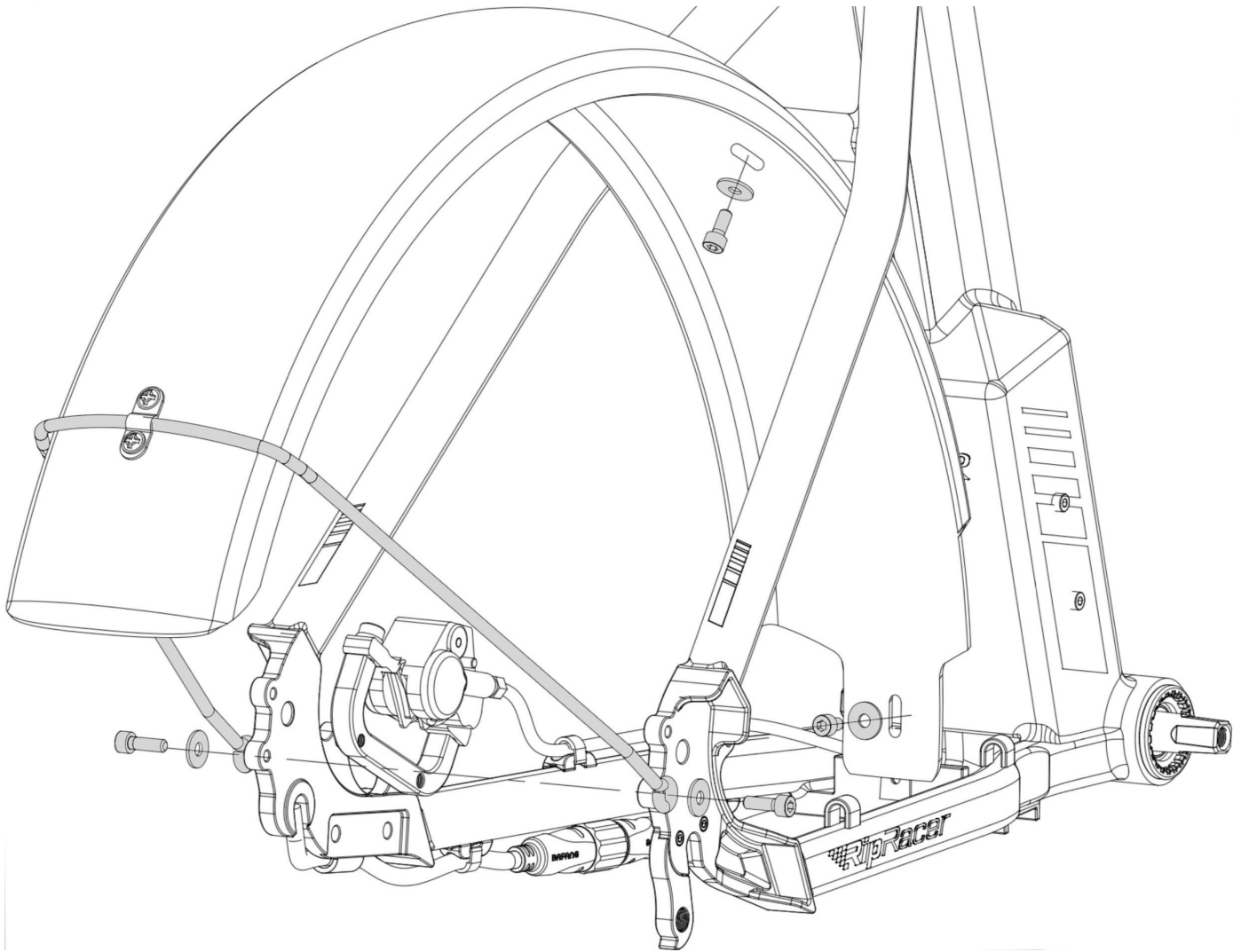
- Install the fender stay fork clamps. Be sure they are oriented as shown in the figure above. You can install the M6x 16mm bolt and nut to keep them in place, but do not secure it as you may need to reposition before final tightening.
- Swing the fender stays and line them up to the fork clamps. Install the M5x16mm bolt, washer and nut on both clamps but do not fully secure it until final adjustments are made.
- Slide the fork clamps as needed until the fender sits centered and not touching the tire.
- Now you can fasten the bolts (recommended 4-6 N.m.) to lock in the position of the fender stay.
- Verify that the wheel rotates freely without rubbing against the fender or the fender stays.
- All items should be secured before test riding the e-bike.

REAR FENDER INSTALLATION

Notes

- Be sure your e-bike is powered OFF and the battery is removed.
- Be sure the e-bike is supported so it does not move or tip while working on it.
- The rear wheel does not need to be removed to complete the installation of the rear fender.

Installation Steps



Note: The wheel has been removed in the image to show the hardware and their locations.

- Deflate the rear tire completely. You can use the 4mm allen wrench to depress the valve pin to release the air from the tire.
- Once deflated, locate the zip ties. You will need to compress the top section of the tire with your hands, while a friend attaches two zip ties about 6 inches apart at the top of the tire. Have the friend attach the zip ties utilizing the pliers so that the zip ties are *very tight*. This will help give you more room so you can install the bolts on the inside of the fender. The zip ties will help to compress the tire even more and allow you access to the hole at the top of the fender. Use your finger to start the bolt onto the threads, then use the allen wrench to finish the tightening each.
- Swing the fender stays and line them up to the mounting points on the side of the frame as shown in the figure. They should be sitting on the outside of the frame.

- Use an M5 x 14mm bolt and a washer on each mounting point to secure them to the frame.
- Be sure the fender is sitting centered and not touching the wheel. Now you can use the allen wrench to securely tighten the bolts. They should be fastened to 5-8 N.m. and sit flush on each location.
- Remove the zip ties with the scissors being sure not to scratch the rim.
- Re-inflate your rear tire with the air pump (the proper PSI is located on the side of the tire.) And then re-attach the valve cap.

Pre-Ride Inspection

- Check that the fenders and their components are securely fastened to the frame.
- Check that every item that was removed has been reinstalled correctly and is properly fastened.
- Check that the fenders do not interfere with the wheel's rotation and that there isn't anything obstructing or touching the wheel.
- Do a test ride to verify that all items are in working order.

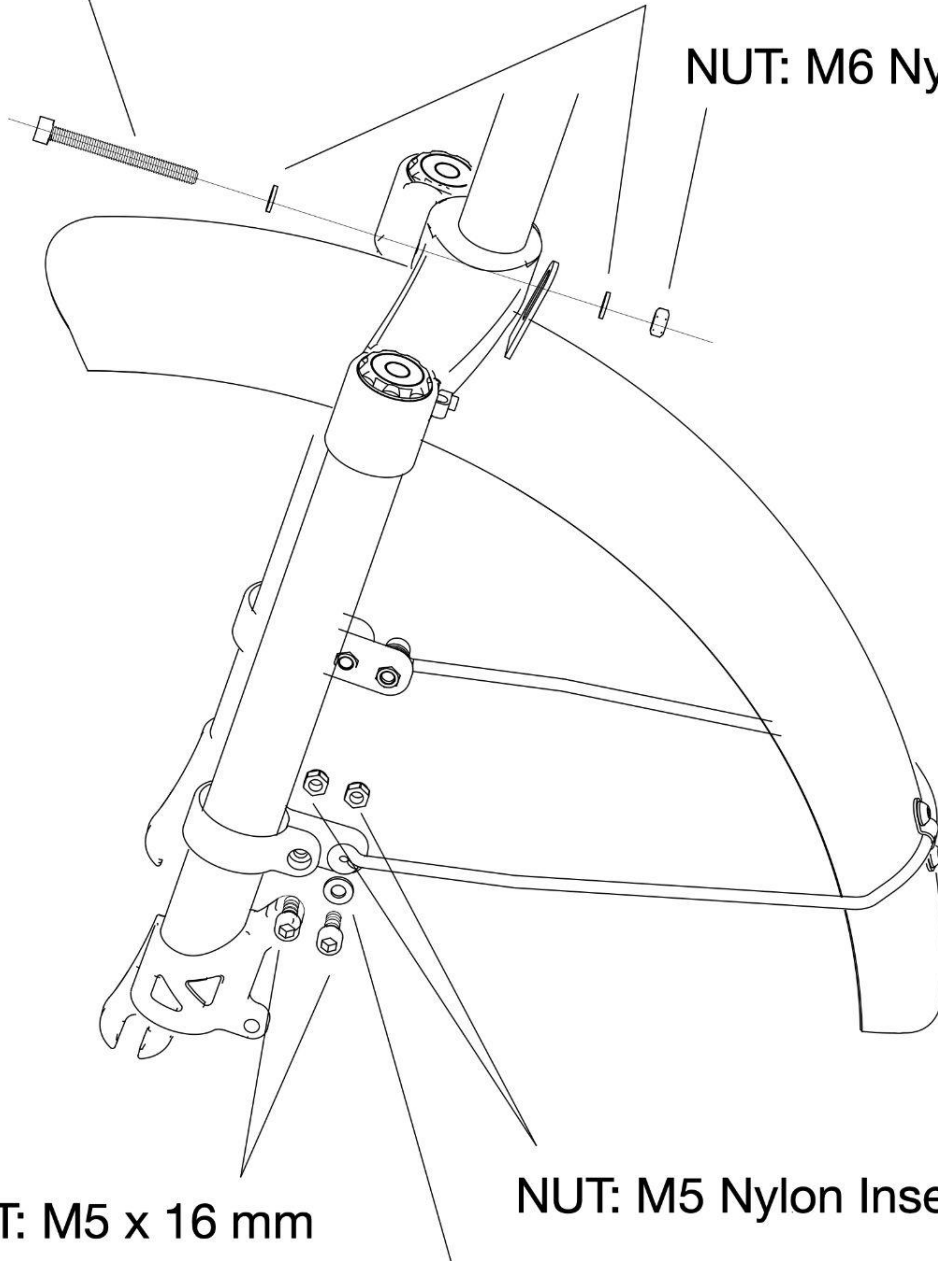
WARNINGS

- Use the fenders for their intended purpose.
- Do not put payloads onto the fender.
- Do not modify the fenders in any way.
- After the first 50 miles, verify all items are securely fastened and in the correct place.
- Discontinue the use of the fenders if they have been damaged by a crash or heavy impact.

BOLT: M6 x 65 mm

WASHER: M6 x 12 x 1 mm

NUT: M6 Nylon Insert



BOLT: M5 x 16 mm

NUT: M5 Nylon Insert

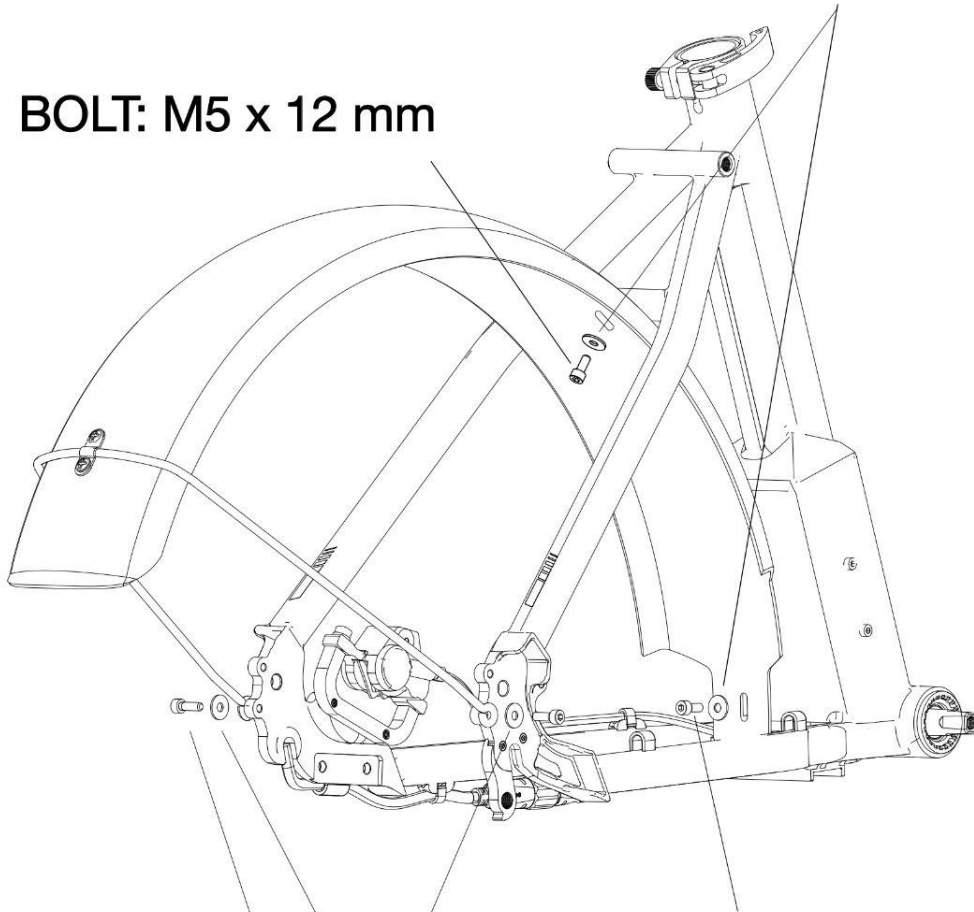
WASHER: M5 x 14 x 1 mm



RipRacer Front Fender
Installation Diagram
R20220701-001

WASHER: M5 x 14 x 1 mm

BOLT: M5 x 12 mm



BOLT: M5 x 8 mm

WASHER: M5 x 14 x 1 mm

BOLT: M5 x 14 mm


RipRacer Rear Fender Installation Diagram R20220701-001

Notes
