



For more information or replacement brushes visit us at taoclean.com



Call or text: +1-714-363-3599



Email: support@taoclean.com

Please Note:

This equipment has been tested and found to comply with the limits for a Class B digital device, pursuant to part 15 of the FCC Rules. These limits are designed to provide reasonable protection against harmful interference in a residential installation.

This equipment generates, uses and can radiate radio frequency energy and, if not installed and used in accordance with the instructions, may cause harmful interference to radio communications. However, there is no guarantee that interference will not occur in a particular installation. If this equipment does cause harmful interference to radio or television reception, which can be determined by turning the equipment off and on, the user is encouraged to try to correct the interference by one or more of the following measures:

- Reorient or relocate the receiving antenna.
- Increase the separation between the equipment and receiver.
- Connect the equipment into an outlet on a circuit different from that to which the receiver is connected.
- Consult the dealer or an experienced radio/TV technician for help.

Changes or modifications to this unit not expressly approved by the party responsible for compliance could void the user's authority to operate the equipment.

ona

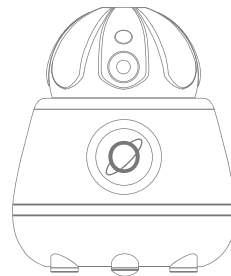
DIAMOND

with

germshield+

USER MANUAL

BA-0214



IMPORTANT

**READ THIS USER MANUAL CAREFULLY
BEFORE YOU USE THE DEVICE. ALSO,
PLEASE SAVE IT FOR YOUR
FUTURE REFERENCE.**



CONTACT

For assistance
call or text: +1-714-363-3599

T A C clean © 2022

All rights reserved. No part of this book may be reproduced, stored in a retrieval system, or transmitted in any form or by any means, electronic, mechanical, or otherwise, without written permission of the copyright owners.

This device complies with Part 15 of the FCC Rules. The operation of this device is subject to the following two conditions: (1) this device may not cause harmful interference, and (2) this device must accept any interference received, including interference that may cause undesired operation.

ona
DIAMOND
with
germshield+

WELCOME TO A NEW ERA OF CLEANLINESS

Congratulations on your new Ona Dimaond Facial Brush. You've made a smart investment in skincare, and we are so happy and grateful you chose our system.

We have worked night and day to design our best facial brush and we want you to love it. To get you up and running as fast as possible and ensure the best from your Ona Dimaond Facial Brush and UV sanitizer, please take a moment to read these instructions.

What follows are steps to help you understand how to charge your system, operate and keep it maintained to ensure the best performance for superior results, and some technical information, just in case you love engineering as much as we do.



ATTENTION



WHEN USING ELECTRICAL DEVICES, BASIC SAFETY PRECAUTIONS SHOULD ALWAYS BE FOLLOWED

CHILDREN SHALL NOT PLAY WITH THE DEVICE.

CHILDREN SHALL NOT CLEAN OR CARRY OUT USER MAINTENANCE WITHOUT ADULT SUPERVISION. THANK YOU.

THIS APPLIANCE CAN BE USED BY CHILDREN FROM 8 YEARS OF AGE SO LONG THEY ARE SUPERVISED OR HAVE BEEN GIVEN INSTRUCTIONS CONCERNING THE USE AND OPERATION OF THE DEVICE IN A SAFE MANNER. THE CHILD MUST UNDERSTAND MISUSE OF THE DEVICE COULD BE DANGEROUS, HARMFUL AND HAZARDOUS TO THE CHILD'S HEALTH AND SAFETY.



DANGER



THIS APPLIANCE CONTAINS A UV EMITTER. DO NOT STARE AT THE LIGHT SOURCE.

UV LIGHT CAN BE HARMFUL TO THE HUMAN EYE AND SKIN.

BE SAFE AND DO NOT REACH FOR A UV SANITIZER THAT HAS FALLEN INTO WATER.

FIRST UNPLUG THE DEVICE IMMEDIATELY, THEN GATHER THE UV SANITIZER AND WAIT UNTIL IT FULLY DRIES BEFORE ACTIVATING AND USING DEVICE AGAIN.

NEVER FORCE THE UV SANITIZER PLUG INTO AN OUTLET.

IF IT DOES NOT EASILY FIT INTO THE OUTLET, DISCONTINUE USE AND RETURN TO YOUR VENDOR OR TAO CLEAN FOR SERVICE.



DANGER



DO NOT PLUG THE UV SANITIZER INTO AN OUTLET WITH A VOLTAGE OR FREQUENCY OTHER THAN SPECIFIED ON THE CHARGER. PLEASE BE AWARE VOLTAGE CONVERTERS DO NOT GUARANTEE VOLTAGE COMPATIBILITY. SO BE VIGILANT AND MOST OF ALL BE SAFE.



WARNING



PLEASE KEEP THE ELECTRIC CORD AWAY FROM HEATED SURFACES AND DO NOT USE THE POWER ADAPTOR IF DROPPED IN WATER.

DO NOT USE THE UV SANITIZER CHARGER IF IT HAS A DAMAGED CORD OR PLUG ADAPTOR.

ONLY USE THE POWER ADAPTOR & CABLE POWER SUPPLY PROVIDED WITH THE CLEANING STATION. ALWAYS HAVE THE CHARGER AND/OR SANITIZER REPLACED WITH ONE OF THE ORIGINAL TYPE IN ORDER TO AVOID DAMAGING THE DEVICE OR CAUSING HARM TO YOURSELF. NO EXCEPTIONS. THANK YOU.

IF THE DEVICE IS DAMAGED IN ANY WAY (BRUSH HEAD, FACIAL BRUSH HANDLE, CHARGER AND/OR SANITIZER), STOP USING IT.

IN CASE OF ANY MECHANICAL FAILURE WITHIN THE WARRANTY PERIOD, PLEASE RETURN YOUR TAO CLEAN SYSTEM FOR SERVICE. DO NOT ATTEMPT TO DISMANTLE. DISMANTLING THE DEVICE WILL VOID THE WARRANTY.

THIS DEVICE CONTAINS NO SERVICEABLE PARTS. IF THE APPLIANCE IS DAMAGED, CONTACT THE TAO CLEAN CUSTOMER CARE FOR ASSISTANCE, PLEASE TEXT OR CALL +1 (714) 363-3599 OR EMAIL: SUPPORT@TAOCLEAN.COM



CAUTION



WE DESIGNED YOUR ONA DIAMOND TO CLEAN YOUR SKIN LOVINGLY. PLEASE AVOID CONTACT WITH YOUR EYES AND RINSE THOROUGHLY IF YOU ACCIDENTALLY GET CLEANING PRODUCT IN YOUR EYE. IF YOU ARE UNDER A DOCTOR'S CARE FOR ANY SKIN CONDITION OR THINK YOU MAY HAVE A SKIN CONDITION, PLEASE CONSULT YOUR PHYSICIAN BEFORE USING THE ONA DIAMOND FACIAL BRUSH. SOME SKIN SENSITIVITY MAY DEVELOP DUE TO YOUR SKIN ADJUSTING TO THE BRUSH'S DEEP CLEANING ACTION.

IF REDNESS APPEARS, IT MIGHT BE CAUSED BY PRESSING TOO HARD. PLEASE REFER TO PAGE 20 USING THE DEVICE BRUSHING TECHNIQUE SECTION FOR MORE INFORMATION.

YOUR ONA DIAMOND FACIAL BRUSH DESIGN ENHANCES THE CLEANING POWER OF YOUR FAVORITE CLEANSER. IF THIS IS YOUR FIRST TIME USING A MOTORIZED FACIAL BRUSH, WE RECOMMEND THAT YOU START WITH THE BRUSH HEAD OPTIMIZED FOR GENTLE DAILY USE.

DO NOT USE THE ONA DIAMOND FACIAL BRUSH WITH JAGGED EXFOLIATING PARTICLES SUCH AS SHELLS, METALS, OR CERAMICS. WE RECOMMEND THE STIFFER EXFOLIATOR BRUSH HEAD (SOLD SEPARATELY) ALONG WITH YOUR FAVORITE GENTLE CLEANSER FOR PERIODIC EXFOLIATING.

ATTENTION

This device has been designed only for cleaning the face and skin. Do not use it for any other purpose. Stop using the appliance and contact your doctor if you experience any discomfort or pain.

**Ona Diamond was designed for personal use.
We do not recommend that you share the brush heads.**

**We want to keep you clean. We want to keep you healthy.
Most importantly, we want to keep you that way.**

Using the Ona Diamond Facial Brush to remove makeup may stain the bristles, but will not affect performance. If discoloration occurs, clean the brush head with soap and water.

Do not put the brush head, the handle, the charger, and/or the sanitizer in the dishwasher.

**These instructions are also available in pdf from our website:
www.taoclean.com/manuals**

FEATURES

CHARGING MODE

Your Ona Diamond should have enough charge to use at least once, so you can take it for a spin right away.

Afterward, you will need to charge the battery.

ATTENTION

THE BATTERY NEEDS 24 HOURS TO CHARGE FULLY THE FIRST TIME.

It could never be more simple. Just place your Ona Diamond Facial Brush Handle in the plugged in UV sanitizer, and it will automatically start to charge and immediately start the cleaning cycle. After the cleaning process has finished the badge light will change from blue to white.

Keeping the facial brush handle on its cleaning station not only protects the brush head in an excellent clean environment but also keeps it fully charged and ready for use.



FEATURES

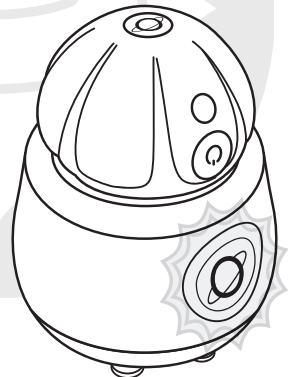
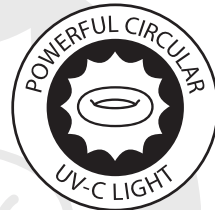
CLEANING MODE

germ shield+

Germ shield+ technology delivers the maximum level of sanitization. We designed the UV sanitizer to protect and enclose the facial brush from environmental pollutants coupled with the circular UV-C lamp to sanitize the facial brush.

The cleaning station uses a specially designed circular UV-C light bulb that helps kill germs on the facial brush head, keeping your facial brush clean and dry; drop the facial brush in the cleaning station and let it do its thing.

As the cleaning cycle begins, the light will change from white to blue and slowly pulse. After 5 minutes, the light will change back to white.

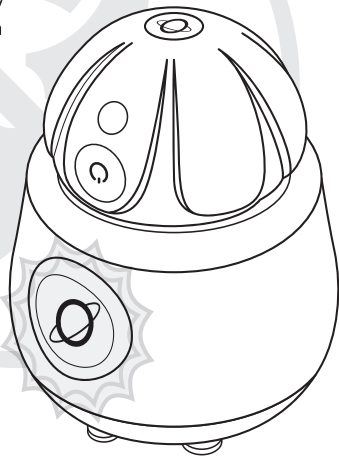


FEATURES

DRYING MODE

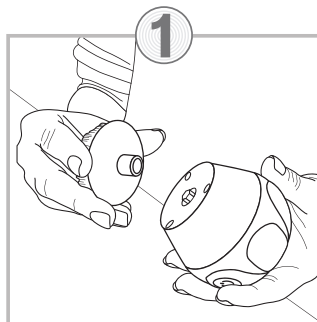
Killing 99.9% of germs is unachievable if the brush is kept wet.

Your Ona Diamond Cleaning Station also has a heating element to gently dry your facial brush head immediately after completing the UV cleaning process. The cleaning station gently dries the facial brush while within the UV sanitizer chamber.

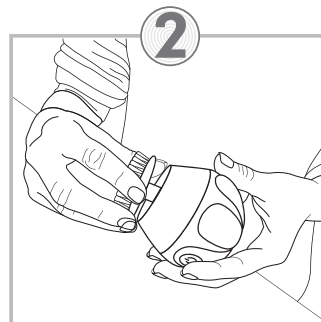


PREPARING FOR USE

BRUSH ASSEMBLY



Select your brush head type. Connect the head to the brush handle. Locate the hole on the backside of the head and ...



...gently and firmly lock into place

Replace brush heads every three months or sooner to achieve the best results.

ATTENTION

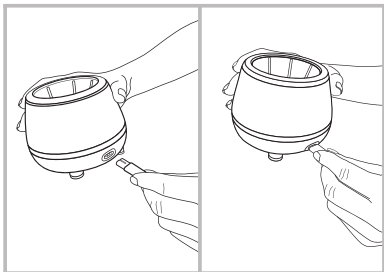
USE ONLY OFFICIAL TAO CLEAN REPLACEMENT BRUSH HEADS.

Fakes won't get the job done.

PREPARING FOR USE CONNECTING POWER

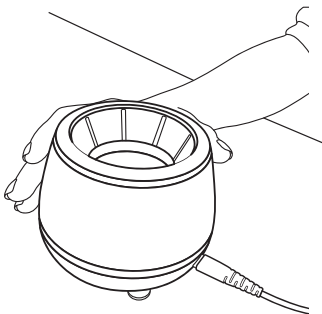
Carefully plug the power adaptor into the small socket located below the waistline at the rear of the cleaning station. Use the correct orientation of the plug into the socket.

Now you are ready to plug the adaptor into an electrical outlet.



ATTENTION

TO ENSURE YOUR UV SANITIZER PERFORMS ITS TASKS PERFECTLY, PLEASE MAKE SURE YOUR SANITIZER IS PLACED ON A CLEAN, FLAT HORIZONTAL SURFACE.

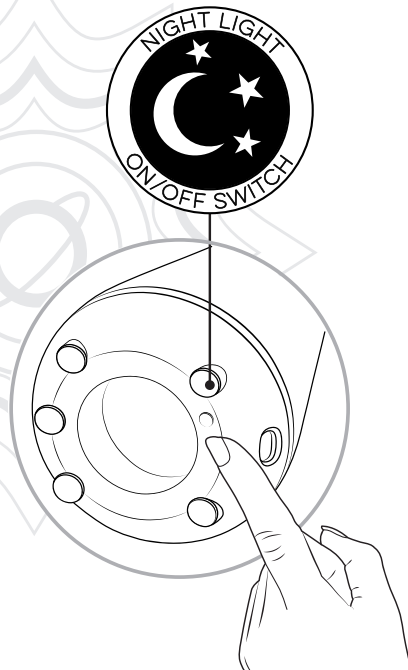


PREPARING FOR USE NIGHT LIGHT SWITCH

Our cleaning station is a brilliant addition to your countertop, guiding you like a beacon of clean throughout the night. However, if you'd like to turn off the inviting white glow of the "night light," it's easy.

Carefully invert the UV sanitizer and locate the "night light" button, as shown by the "night light" icon. You can then toggle the button off by pressing once to disable it. Once the device is done cleaning your brush, and the pulsing blue sequence is finished, the night light will turn off. If you change your mind, press again, and it will start beaming.

Please note: turning the light off will not stop the device from cleaning.

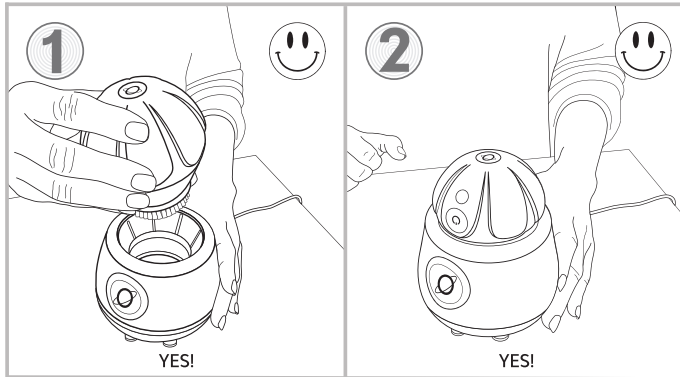
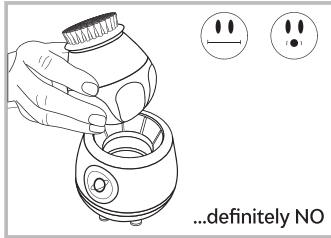


PREPARING FOR USE

BRUSHING DOCK

Gently place your brush handle into the cleaning station. The brush handle fits in the station perfectly.

Take care in locating the brush handle so that it drops into the Station effortlessly.



ATTENTION

LOW BATTERY

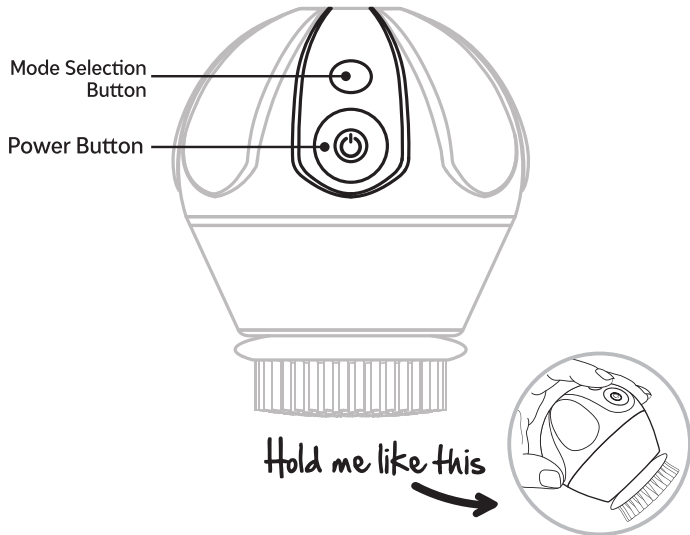


The low battery alert indicates your Ona Diamond Handle is running low on its battery charge. If this occurs, place the brush back into the UV sanitizer. Give it a few moments, and everything will be ok.

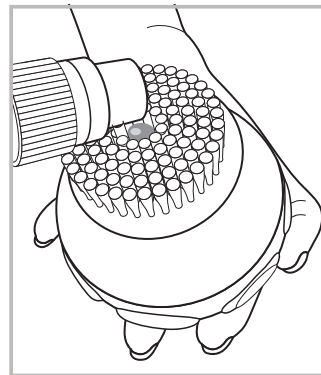
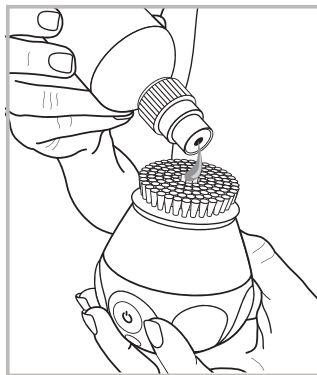
If the brush handle continues to pulsate while in the UV sanitizer, please check to see if the power is connected.

DIRECTIONS FOR USE CONTROL PANEL

The brush dashboard puts you in control!



DIRECTIONS FOR USE APPLYING PRODUCT



To prepare the brush for use, make the brush bristles wet and apply a small amount of your favorite cleanser.

Within the center of the brush head is a small "product well." Use this to hold and measure the amount of product you wish to use.

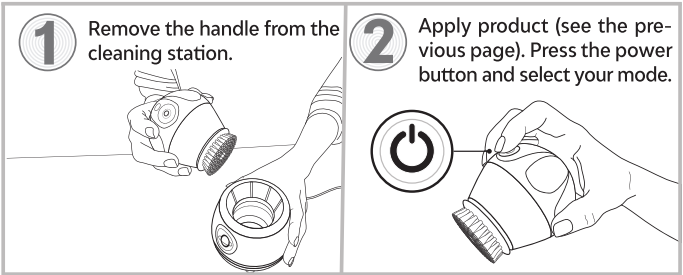


Using the "product well" to measure product equally each day is a useful way to keep track of product use.

The trick is not to overdo it. Your facial brush will whip up a small amount of your favorite cleanser into a fine lather.

DIRECTIONS FOR USE

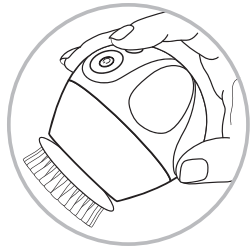
ACTIVATING THE BRUSH



BRUSHING MODES

Your Ona Diamond Brush Handle has two cleaning modes. **Super Clean Mode & Sensitive Clean Mode.** **Super Clean Mode** is our standard for cleaning the skin.

You can access **Sensitive Clean Mode** at the touch of a button. **Sensitive Clean Mode** offers a slower yet thorough cleaning experience for sensitive skin.



USING THE DEVICE

BRUSHING MOTION

The ergonomic facial brush handle is designed for your comfort and to be gripped like a baseball.

Hold it firmly but always gently on your face.

ATTENTION
NOW GENTLY PLACE THE FACIAL BRUSH BRISTLES AGAINST THE FACE, FLAT ON THE SKIN. NEVER PRESS HARD OR FORCE THE BRISTLES INTO YOUR SKIN.

Press the power button and fire up the engine of the brush. Sounds great, doesn't it?

ATTENTION
THERE ARE VERY DELICATE AREAS AROUND THE FACE. TRY TO AVOID THE EYE AND EYELID AREA. SOAP IN YOUR EYES CAN BE A PAINFUL EXPERIENCE, SO AVOID IT, PLEASE. IF YOU GET CLEANSER IN YOUR EYE, STOP THE BRUSH AND RINSE IMMEDIATELY.



Allow the spinning movement of the brush and bristles to do all the hard work. Trust your brush. It will do all the brushing for you.

Move the brush in a sweeping motion, carefully gliding across the skin area, allowing the brush to do the cleaning.

BRUSHING TECHNIQUE

Rotational technology is a highly regarded and efficient alternative to manual washing. Its spinning nature gently sweeps through pores to safely dislodge debris, hygienically clean and efficiently polish the skin surface. Think of it as your dedicated army of personal assistants gently sweeping away with no fatigue.

Remember to select the appropriate brush type and pair with your favorite product, be it a cleanser, soap, or exfoliator. We recommend using the exfoliating brush once a week.

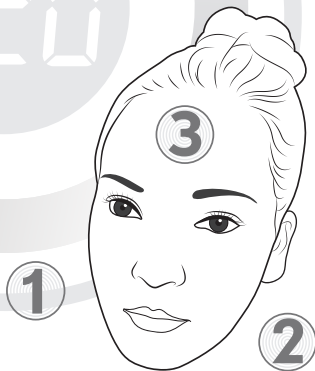
For an even and thorough cleansing of your face, your Ona Diamond features an integral timer that pauses momentarily to indicate it is time to move to another part of your face.

Your Ona Diamond Facial Brush has three 20 seconds intervals.

We've created a fun map of your face to demonstrate how to use the intervals.

Please study it. Your face is a beautiful landscape waiting to be explored.

You could say the brush is a helicopter waiting to fly around it, but we won't; it's just a brush. We will say your face is beautiful, though.



ATTENTION

LEAVING YOUR FOREHEAD LAST WILL REDUCE THE POSSIBILITY OF PRODUCT SLIDING INTO YOUR EYES. PLEASE SWITCH THE BRUSH OFF AND RINSE IMMEDIATELY WITH CLEAN WATER IF ANY PRODUCT SUCH AS SOAP OR CLEANSER GETS INTO YOUR EYES.



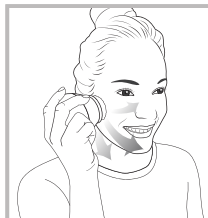
Hold the brush head in place for a few seconds before sweeping on to the next area. It's saying hello and then goodbye.

Allow the brush to work the nooks and crannies too. Try to imagine yourself as an orchestra conductor guiding cleanliness around your face.

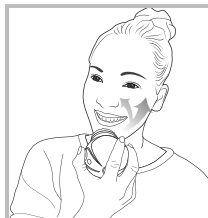
Sweep across each zone following the direction of the arrows in smooth movements forward & backward.

ATTENTION

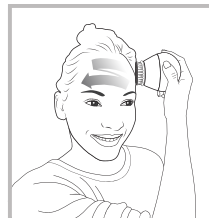
KEEP YOUR HAIR BACK AND OUT OF THE WAY FROM THE BRUSH HEAD.



1



2



3

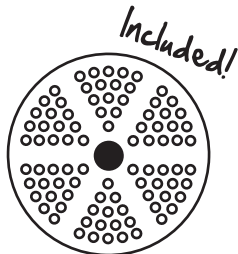
USING THE DEVICE

BRUSH TYPE

TAO Clean provides interchangeable brush heads, uniquely designed and engineered for specific skin types or conditions.

This set includes a Daily Care Head intended for everyday cleansing.

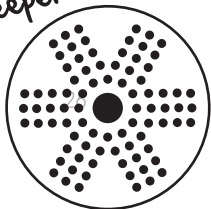
Here's a rundown of our specialist brushes.



DAILY CARE

Use every day for smoother skin.

Deeper clean!



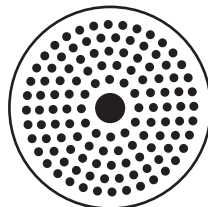
EXFOLIATOR

Use once weekly for radiant skin.



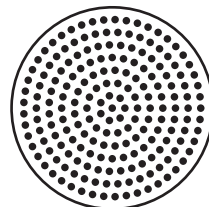
USING THE DEVICE

SPECIALIST HEADS



SENSITIVE

30% softer for gentle skin types.

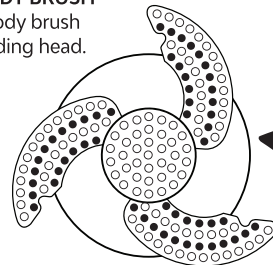


SILICONE

For the ultimate in clean.

EXPANDING BODY BRUSH

Soothing all-body brush with unique folding head.



All new brush!

Visit our website www.taoclean.com for more details and replacements.

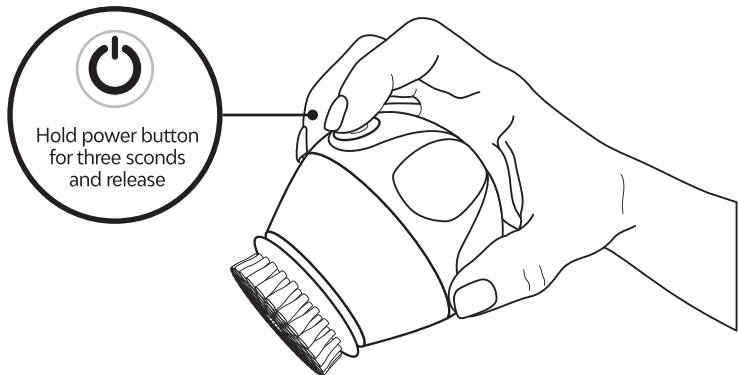
USING THE DEVICE EXTENDED MODE

The extended mode works in unison with the body brush so that you have more time to clean your body.

Extended mode is activated easily; hold the power button for three seconds and release. The brush will now run for five minutes before automatically turning off.

ATTENTION

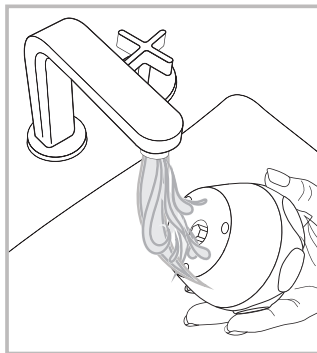
**DO NOT USE EXTENDED MODE
FOR CLEANING YOUR FACE.**



MAINTENANCE BRUSH CLEANING

Please follow these easy do maintenance routines to ensure your Ona Diamond Facial Brush is always in the very best condition.

Keeping to these routines will also ensure your system is always operating at its best.



Essential Cleanliness Maintenance Routines Keep the Ona Diamond Facial Brush clean

Always rinse the brush head and bristles after each use.

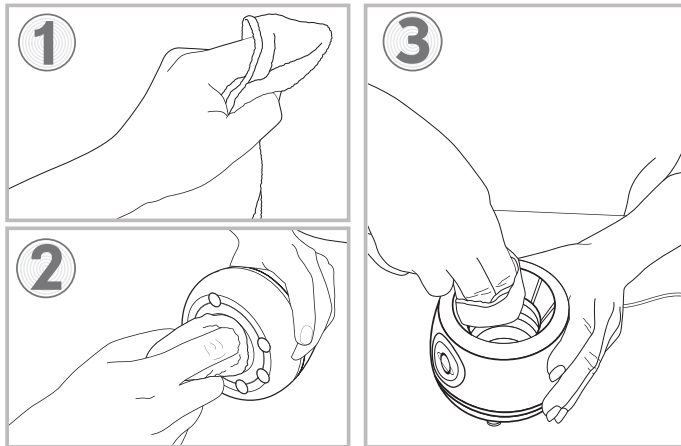
We recommend that you remove the brush head at least once a week and rinse the shaft area with warm water.

Be careful not to damage the seal on the shaft with sharp objects when you clean.

MAINTENANCE

BASE CLEANING

We considered this when we designed the smooth curved interior shape of the UV sanitizer core. We do recommend cleaning once a week to ensure tip-top condition. Use a soft cloth. Wrap the fabric around your finger like so (see diagram no. 1). Unplug the station. Carefully run your finger around the bottom (see no. 2) and do the same around the top-docking hole (see no. 3).



MAINTENANCE

WARRANTY

Two year warranty

Your Ona Diamond is warranted against defects in workmanship materials for two years for the original purchaser from the date of purchase. It does not cover damage or wear resulting from accidents, misuse, abuse, commercial use, or unauthorized adjustment and/or repair.

Please note: It does not cover wear of the brush heads.

There are no expressed warranties except as listed above. This warranty gives you specific legal rights, and you may have other rights which vary from state to state. Should your Ona Diamond require service (or replacement at our option) while under warranty, do not return to the retailer. Instead, please contact our customer service. Our friendly staff are trained to help you. If your Ona Diamond needs to be returned, we will arrange a return label.

For assistance: Text or call: +1 (714) 363-3599
Email: support@taoclean.com