

Firewood 7

IMPORTANT SAFETY INSTRUCTIONS

MISUSE CAN CAUSE INJURY AND PROPERTY DAMAGE!

Read instructions before use and only use vaporizer according to instructions.

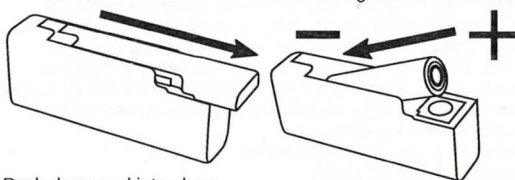
- Only use with High Drain Lithium Ion 18650 cells that are rated for a **minimum of 20 Amps continuous discharge current** and have a nominal voltage of 3.7V. See the Firewood website for specific recommendations.
- Never use a battery that has been damaged or that has a damaged plastic covering.
- Only use a battery charger that is intended for use with 18650 cells and has over-charge circuit protections.
- Remove battery when traveling by air or sending by mail.
- Do not use near water or if wet.
- The oven and lid can get **HOT** while in use. Please use caution and allow a few minutes for cooling before handling.



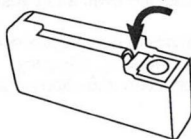
Load Battery:

Remove Lid

Insert the negative terminal first



Push down and into place



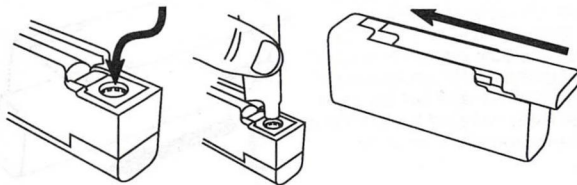
Vaporizer will not work if the battery is inserted backwards. Please ensure negative end goes in first!

Load Oven:

Fill oven no higher than the air intake holes near the top edge of the oven

Use end of lid to evenly pack down the contents

Replace lid



Button Summary (details for each function below):

Click:

1x Quick

Hold

1x Quick & Hold

2x Quick & Hold

3x Quick & Hold

2x Quick

3x Quick

4x Quick

Function:

Check battery level

Turn heater on

Change to preset 1 & turn heater on

Change to preset 2 & turn heater on

Change to preset 3 & turn heater on

Check current preset

Check temperature for current preset

Set Temperature for Current Preset

Check Battery Level:

Click the button 1 time quickly. The vaporizer will buzz between 1 and 5 times to indicate the battery level. 3 sets of 3 buzzes indicates the charge level is too low to use (<3.5V) Recharge immediately to prevent battery damage! 3 sets of 4 buzzes indicates the charge level is too high (>4.3V), please check charger!

| Buzzes | Battery Level |
|--------|----------------------------|
| 5 | High (above 4.1V) |
| 4 | Medium-High (3.95V - 4.1V) |
| 3 | Medium (3.8V - 3.95V) |
| 2 | Medium-Low (3.7V - 3.8V) |
| 1 | Low (below 3.7V) |

Turn Heater On & Draw:

Hold the button down. The vaporizer will buzz quickly 1, 2, or 3 times to indicate the current preset as the heater starts to heat up. When it is close to the preset temperature it will buzz 1 time again to indicate that the vaporizer is ready for a draw. Continue to hold the button throughout the draw as the vaporizer will hold the temperature at the preset level. The heater turns off whenever the button is released and will buzz once shortly thereafter to indicate shutdown.

Change to Preset 1, 2, or 3 and Turn Heater On:

Click the button 1, 2 or 3 times quickly to select preset 1, 2, or 3 then hold down the button. The selected preset will be saved and the heater will turn on.

Check Current Preset:

Click the button 2 times quickly. The vaporizer will buzz quickly 1, 2, or 3 times to indicate the current preset.

Check Temperature for Current Preset:

Click the button 3 times quickly. The vaporizer will give 2 sets of buzzes. The 1st buzz gives the hundreds place and the 2nd buzz gives the tens place (in degrees F) as shown in the table to the right.

Set Temperature for Current Preset:

Click the button 4 times quickly. The vaporizer will buzz back 4 times quickly. Using the table to the right, select the temperature by clicking as indicated. For example, to set the temperature to 390, click 4 times to start and wait for 4 buzzes. Then click 3 times and wait for 3 buzzes back. Then click 9 times to finish.

Tips On Drawing:

The Firewood 7 uses a combination of conduction and convection to heat your botanicals. The conduction is the heat

Temperature vs. Buzzes/Clicks:

| Buzzes/Clicks | Temp F (C) |
|---------------|------------|
| 2 then 5 | 250 |
| 2 then 6 | 260 |
| 2 then 7 | 270 |
| 2 then 8 | 280 |
| 2 then 9 | 290 |
| 3 then 0 | 300 |
| 3 then 1 | 310 |
| 3 then 2 | 320 |
| 3 then 3 | 330 |
| 3 then 4 | 340 |
| 3 then 5 | 350 |
| 3 then 6 | 360 |
| 3 then 7 | 370 |
| 3 then 8 | 380 |
| 3 then 9 | 390 |
| 4 then 0 | 400 |
| 4 then 1 | 410 |
| 4 then 2 | 420 |
| 4 then 3 | 430 |
| 4 then 4 | 440 |

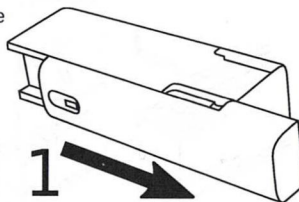
transfer from the walls of the oven directly into the botanicals and occurs whether or not you are drawing. The convection is the heat transfer from hot air to your botanicals after passing through the heating element and occurs only when you are drawing. By varying your draw speed and timing you can vary the balance between conduction and convection. Starting your draw early (before the ready-buzz) and drawing faster causes more convection while starting your draw after the ready-buzz and drawing slow causes more conduction. Please keep in mind:

- Conduction heats the outside edges
- Convection heats the inside
- Drawing too fast can pull too much heat past the oven and cause the mouthpiece to overheat
- Drawing too fast can cause your botanical oils to move out of the oven area before getting a chance to vaporize, reducing efficiency
- Drawing too slowly can cause excess conduction and charring at the edges
- Experiment to find your best results!

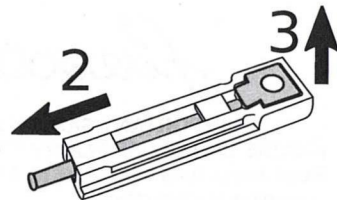
Cleaning:

For best results, clear the oven after each use while still warm by removing the lid and blowing through the mouthpiece to eject the contents. Whenever possible, carefully wipe down the ceramic surfaces on the lid, oven, and mouthpiece while still warm. Doing so while still warm allows stubborn resins to be removed without alcohol.

The glass and ceramic mouthpiece part should be removed and cleaned occasionally. Start by removing the wooden mouthpiece attachment. If the mouthpiece is stuck due to resin buildup, it can be easily loosened by warming up the device before removing.



Remove the glass tube and clean with alcohol (or other solvent) and pipe cleaner. Then remove the ceramic mouth-piece part and clean with a cotton swab and alcohol.



Finishing & Maintaining the Wood Surface:

Firewood vaporizers come either unfinished or with a 100% natural Tung Oil finish. For best results, unfinished wood should be sanded and finished with a natural oil/wax finish. Finished wood can be restored by lightly sanding and reapplying a fresh coat of the original finish.

Warranty: Firewood Vaporizers Inc. One (1) Year Limited Warranty Information
Firewood Vaporizers Inc. grants purchasers of the Firewood Vaporizer a warranty against defects in materials and workmanship under normal use of the device for a period of one (1) year from the date of retail purchase by the original purchaser of the unit. If a physical defect arises and a claim is received within the Warranty Period Firewood Vaporizer Inc. will either (1) repair the device, (2) exchange the device, or (3) refund the purchase price of the device, at the discretion of the company.

Exclusions and Limitations:

The Limited Warranty applies only to devices manufactured by Firewood Vaporizer Inc. This warranty does not apply to: (a) to damage caused by accident, abuse, misuse, or other external causes; (b) to damage caused by operating the device outside the permitted or intended uses; (c) to a device or part that has been modified to alter functionality or capability; (d) to cosmetic damage, including but not limited to scratches, dents, and discolored wood; (e) to damage caused by use of unapproved batteries, charger or power supply; (f) damage to ceramic parts after 1 month from the purchase date.

The Warranty does not apply to normal performance degradation of batteries, neglecting to adhere to cleaning instructions, or heat damage due to improper use of the device. Intentionally disassembling or attempting repairs on your device will void the warranty.

Please email service@firewoodvapes.com for warranty service. Please include a description of the problem and the Name and Date of purchase.