



• **User Manual**

Introduction

Thank you for purchasing the EH220 Minimalist Body-Worn Camera. This guide details how to operate, configure and download data from the EH220. Please keep this guide for future reference.

Charging

The camera should only be charged using the cable and charger supplied with your camera. We recommend charging the camera using the supplied charging dock. To Charge the camera, please place the unit into the charging dock with the USB cable and plug connected. The charging status LED will turn green while charging and change to white when fully charged.

A full charge can take up to 4-5 hours depending on the camera's batteries current charge state.

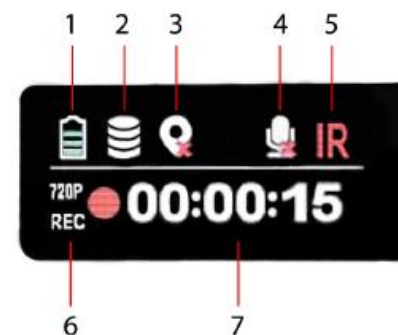
Note: It is recommended to charge the camera before use and long periods of storage, as the battery may have depleted. Always charge before first time use.

Functions

The EH220 has numerous functions and status symbols that you should be aware of. This is a breakdown and an overview of what those indicators mean.

LCD Screen Status:

1. Battery Status
2. Memory Status
3. GPS Status
4. Silent Mode Enabled
5. IR Night-Vision Enabled
6. Recording Resolution
7. Time & Data/Rec Status



Expanded:

IR (Night Vision Icon): When IR (Infrared) has been turned on, the IR icon will turn red.

Mute/Silent Icon: When the mute function is triggered, the mute icon will show a red cross.

GPS Icon: When a GPS signal has been reached, the GPS icon will turn green.

Memory/Storage Icon: When the storage is full, it will show 4 blocks, then one block less depending on the free storage. If loop recording is enabled, it will stay the same.

Battery Icon: When the battery is full, it will show 4 blocks.

1440P (Resolution Icon): When the resolution has been set, the resolution icon will show accordingly.

REC (Recording Icon): When video recording starts, the red dot will start flashing. When the camera is in standby mode, the red dot will be solid red.

056:10:13 (Time Icon): The time indicates how long you have been recording for (HHH:MM:SS)

Body Camera Overview



Item	Description
1. LCD Screen	Described above.
2. Charging	Charging dock connections
3. Infrared Lights	Infrared night vision LEDs for operation of the camera in low light conditions.
4. Lens	Wide angled full HD camera lens.
5. Light Sensor	Used to automatically detect and enable night-vision in low light conditions.
6. Charging Indicator LED	Blue: Charging White: Full Charged
7. Operation Status LED	Solid Red: Standby/Pre-record mode active Solid Green: Switched on and ready to record Flashing Red: Video recording in progress Flash once: Camera is taking a photo
8. Record Button	Start Recording: Press Once. Stop Recording: Press & hold for 3 seconds Switch on & Record: Press and hold while switched off.
9. Snapshot Button	Capture Still Image: Press Once. Enable/Disable Covert Mode: Press and hold for 3 seconds. Covert Mode = Both voice, LED & LCD indication will be disabled, camera will only vibrate: Start

	recording, vibrate once, stop recording, vibrate twice.
10. USB Port & Reset Button	<p>USB socket for charging and downloading recorded data from the camera with- out the need of the dock.</p> <p>Only use the official cable supplied with the Body Worn Camera.</p>
11. Fn Button	<p>Press Once: To activate/deactivate Infrared night vision when set to manual mode.</p> <p>Press Twice: To activate/deactivate silent operation mode.</p>
12. Power Button	To switch the camera on or off press and hold for 3 seconds.

Audible Voice Alerts

The camera is able to give audible alerts for the following scenarios:

Recording Started

Recording Stopped

Low Battery (below 5%)

Full Memory

These can enabled/disabled by pressing the FN button twice.

Device Reset

In the unlikely event your camera becomes unresponsive please perform a device reset by gently pressing the cameras reset button found under the USB socket on the side of the camera.

The reset button should be pressed with a thin blunt tool for 3-5 seconds and then released. The camera will switch off, then press the power switch for 3 seconds to switch the camera back on again.



How To Operate

Power ON/OFF & Standby Mode

Hold the power button for 3 seconds to turn the camera on. The camera will enter a standby mode. Hold for 3 seconds again to turn the camera off.

Video Recording

When the camera is in standby mode, press the REC button to start video recording. It will then initiate with an audio prompt (**recording start**) and the LED recording indicator will flash (red), while the camera vibrates once.

Hold the REC button for 3 seconds to stop the video recording and the camera will vibrate twice, while the LED will change to a solid red colour.

Note: When the camera is powered off, hold the recording button for 3 seconds to start video recording immediately.

Snapshot

When the camera is in standby mode or recording video, press the snapshot button to take a photo.

Hold the snapshot button for 3 seconds to enable covert mode, both the LED & voice indication will be disabled.

Software Installation

The latest version of the software for the EH220 is available on www.overwatchsecurity.com.au/pages/learning. Navigate through the downloads menu and find “EH220 - Auto Driver Installation” and install the file. After that, download the “EH220 – PC Software” file. Once downloaded, extract the .exe file on to your desktop and follow the steps below to install the camera software.

Notes:

1. The EH220 is not Mac compatible
2. If prompted about an ‘unknown application’, click Yes/Ok to continue. The camera software will be automatically installed on your system.
3. You should find a shortcut to the application on your desktop.

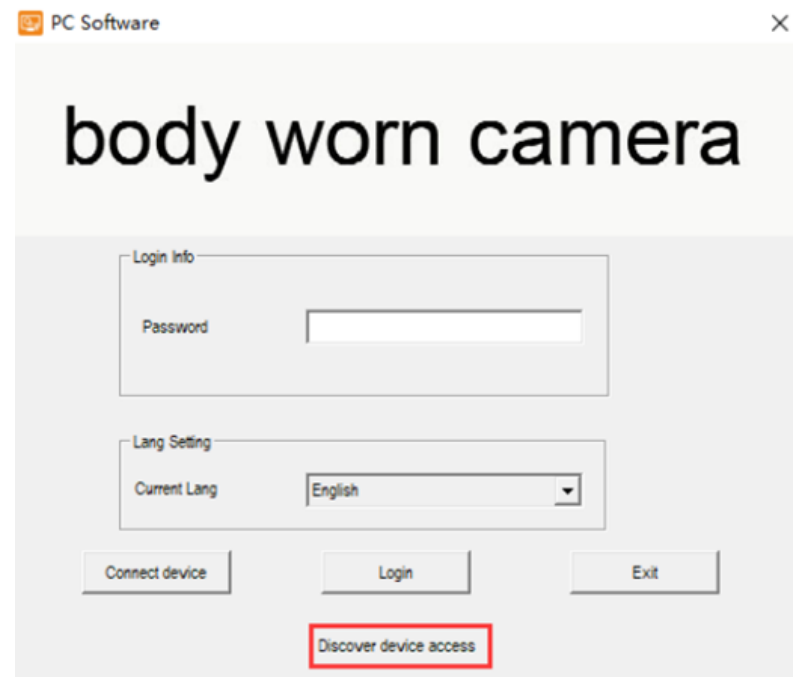
Downloading Data & Configuration

To download recorded data and configure the EH220 body-worn camera, please follow the steps below.

1. Connect the camera to your computer while switched OFF using the supplied dock and USB cable.

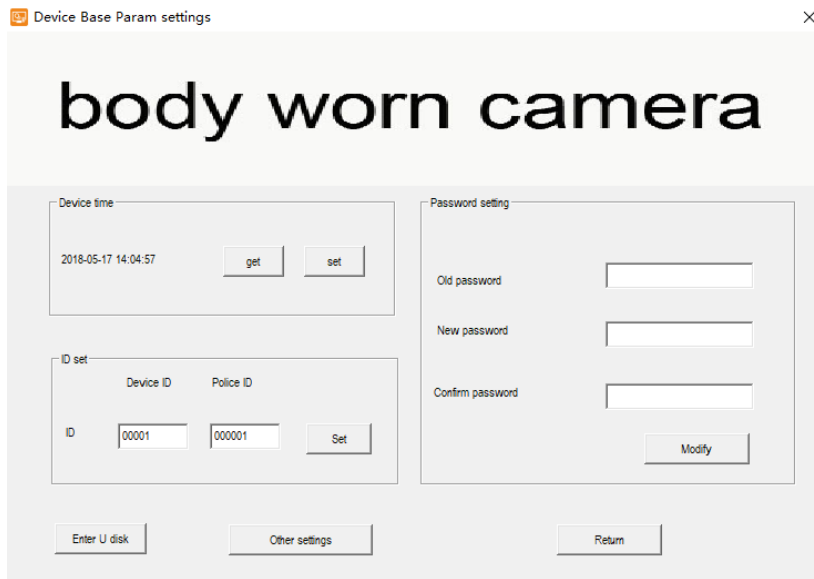
Once connected, the camera will switch on and beep once.

2. Open the PC software and it will detect the camera. If it doesn’t detect automatically, please click the “discover device access” button, and then “connect device”.



3. You will be prompted to enter the camera's password. The default password is 000000. Once entered, click 'login'.

4. Once logged in, you will be able to access the camera storage and settings menus.



Device time: Sync the time & date on the camera from the computer's time. Click 'Get' to set the current time and 'Set' to save.

ID Set: Set a 5 character Device ID and a 6 character User ID to be stamped to all recorded files. Click 'Set' once complete.

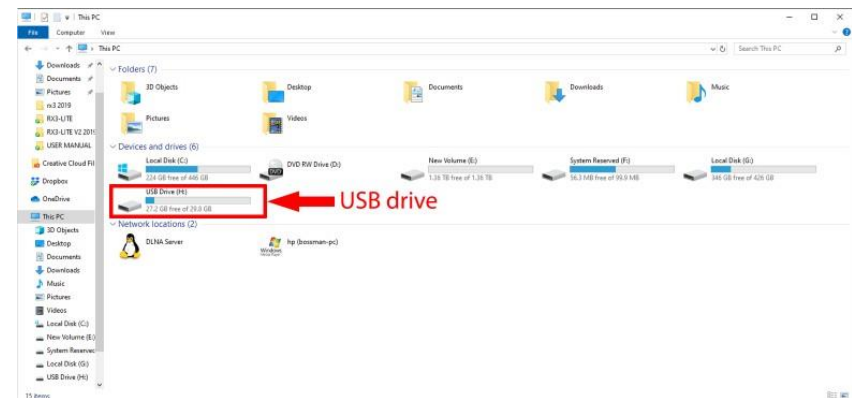
Password Setting: Change the access password for the camera. The password must be 6 characters. Click 'Save Password' to complete.

Enter U Disk: Click to enable access to recorded files from the camera as a 'Mass Storage Device'. Always safely eject the camera before dismounting it to avoid damaging the internal disk. Please see 'step 5'.

Other Settings: Click to access the camera's advanced configuration settings. These settings are explained in the 'step 6'.

Return: Once finished, click 'Return' to finish.

5. To view the video files stored in the camera's memory, click 'Access Video Files' and the camera will restart as a USB drive and appear as an accessible storage device on the connected computer. To backup data, drag and drop files to your computer.



6. To enter the advanced settings, click on the "Other settings" button inside of the main menu.

body worn camera

Resolution	1280x720P30	Infrared	Manual
Video split time	15 Min	Codec format	H.264
GPS/Glonass	OFF	Pre-recording	OFF
Sound volume	12	Time zone	8
Video quality	NORMAL QUALITY	Firmware version	H22_20180514_V0.8
Record warning	ON		
Loop record	OFF		

Return Set and return

Setting	Description	Options
Resolution	Set the video resolution the camera records in.	2560×1440 30P 2304×1296 30P 1920×1080 30P 1280×720 30P 848×480 30P
Video split time	Set the time for how often the camera splits video files during continuous recording	5 min, 15 min, 30 min
GPS/Glonass	Turn ON/OFF GPS location logging.	Off, On

Sound Volume	Set the volume of the camera's internal speaker. This affects the volume of the video playback, audio playback, the key tone, REC warning, and any other sounds played by camera. This doesn't affect the volume of the recorded video or audio files themselves.	0,3,6,9,12
Video quality	Set the sharpnes of the recorded video.	BEST Quality, BETTER Quality, NORMAL Quality
Recording warning	Turn ON/OFF audible alerts for recording.	Off, On
Loop Record	Turn on loop record to allow the camera to record over the oldest footage with the newest footage. Saving you the hassle of manually deleting when the memory is full.	Off, On
Infrared	When set to manual, you need to press the Fn button to turn IR ON/OFF. When set to Auto, these lights will be activated automatically based on the light condition.	Manual, Auto

Code format	Video coding format	H.264, H.265
Pre-recording	Enables a 30 second pre-record mode.	Off, On
Time Zone	Set your local time zone	-12 to +12



Notes of Use

Always safely eject the camera before dismounting.

Always download and backup data between uses.

Never place the camera on or near strong magnetic fields.