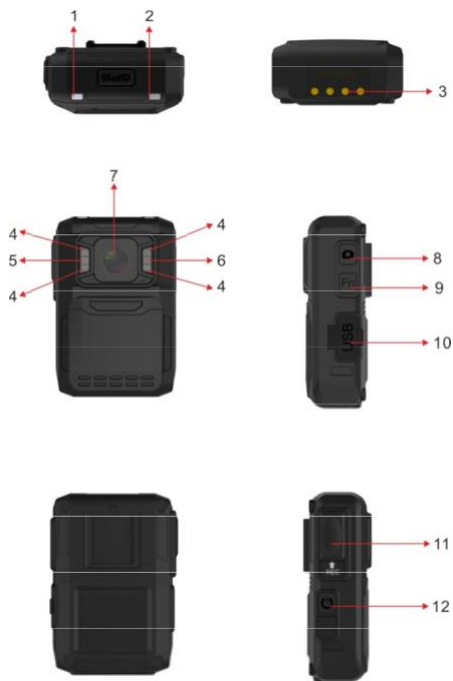


EH210

COMPLETE USER GUIDE

Body Camera Exterior Overview



Item	Description
1. Status Indicator LED	Blue: Charging Status Green: camera is powered up and in standby mode
2. Indicator LED	Flashing Red: camera is recording video Flash once: camera is taking photo
3. Charging dock connector	Connect charging dock for charging or connecting PC
4. Infrared Lights	Records clear image in low light situation. Enable clear face view with up to 10 meters
5. White Light	White light to offer light source
6. Light Sensor	Detect changes in light and auto turn on IR for low-light recording
7. Camera Lens	Full high definition camera
8. Snapshot Button	a). Press to take pictures in standby mode b). Press to take a single snapshot image while in video recording
9. Fn Button	a). Press to turn on/off infrared lights when infrared lights are on manual mode. b). Hold on to turn on/off white light
10. USB Port	Connect to USB cable for charging or connection to PC
11. Slide Switch	Slide the switch up to start video recording; and back down again to stop
12. Power Button	Hold for 3 seconds to turn the camera on; Hold down 3 seconds to turn off the camera

How To Operate

Record

Slide the switch up to start video recording. Recording initiates with audio prompt, status LED and vibration. Slide the switch back down again to stop. Camera vibrates and status LED turns to green.

Note: When the camera is powered off, slide the switch up, then the camera will power on and start video recording immediately.

Power on/off and Standby mode

Hold the power button to turn the camera on in standby mode. Hold down the power button to turn the camera off.

Note: Camera cannot be turned off by holding down the power button when the camera is recording video.

Snapshot

Either when camera is in standby mode or recording video, press the snapshot button to take a photo.

Charging

Use the USB cable supplied in the box to charge the camera via the USB port on the side, or the USB port on the charging dock where camera is dropped. **Note:** Upon receiving your body camera, it is recommended that you fully charge the device before usage. It is also recommended to recharge the device if you haven't used it in a while.

Note:

When the battery level goes to 5%, the camera will prompt a voice alarm: LOW BATTERY, LOW BATTERY

When the memory level descends to 200MB, it will prompt a voice alarm: CARD FULL, CARD FULL

Camera Setting

1. Install **BodyWornCamera.exe** (download from website) to your computer.
2. Connect the camera to the computer and run **BodyWornCamera.exe**.

PS: Make sure the camera is not on recording mode or pre-recording mode before connecting the camera to computer. You can find “**Discover device access**” in the bottom after camera connects to computer successfully.



3. Enter the password and connect device, then click **“login”**. **PS:** default password is **000000**.
4. Synchronizing date and time: click **“get”** and then **“set”**.
5. Changing Device/Police ID: enter Device/Police ID and click **“set”**.
6. Password setting: Enter old password, new password and confirm password and then click **“Modify”**.

Device Base Param settings

body worn camera

Device time

2018-05-17 14:04:57

ID set

	Device ID	Police ID	
ID	<input type="text" value="00001"/>	<input type="text" value="000001"/>	<input type="button" value="Set"/>

Password setting

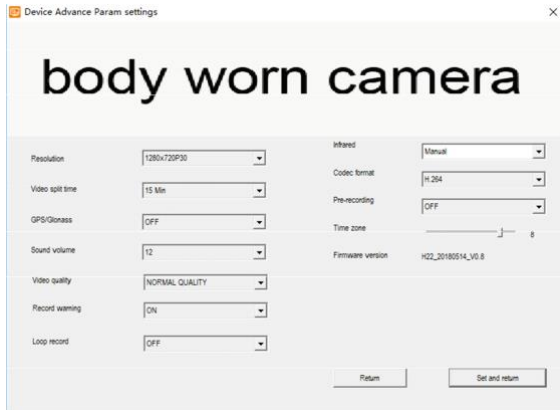
Old password

New password

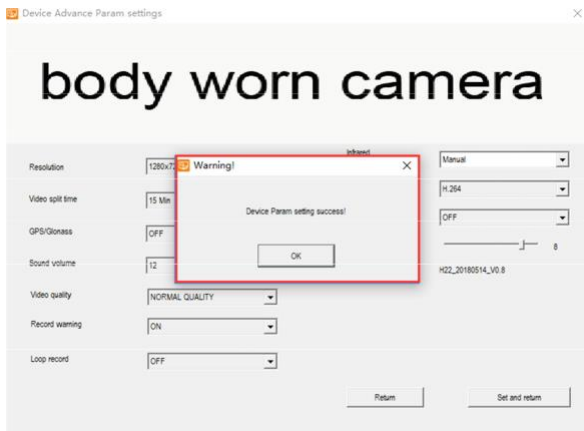
Confirm password

7. Other settings.

Click **“other settings”** in the bottom to get access to other settings. After making the options of settings, click **“set and return”** to go back to previous interface.



After you change the settings, click “**set and return**” to go back to previous interface.



8. Enter U disk mode and mount the camera as mass storage in computer.
PS: You will hear a sound from computer announcing camera is under U disk mode. Then you can go to your camera folder to view and delete files.

Device Base Param settings ×

body worn camera

Device time

2018-05-17 14:50:59 get set

ID set

	Device ID	Police ID	
ID	<input type="text" value="00001"/>	<input type="text" value="000001"/>	Set

Password setting

Old password

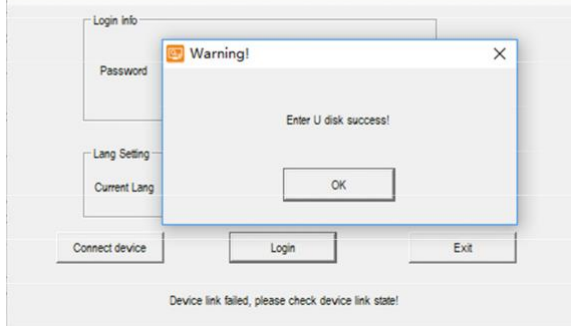
New password

Confirm password

Modify

Enter U diskOther settingsReturn

body worn camera



Reset

RESET BUTTON is inside the USB port

Press RESET BUTTON when camera freezes up or works abnormally.