



A-10 WARTHOG

A-10 ENGINE UPDATE SET

Masters by
Richard Vanzandt

Made in the USA

Instructions by
Jarrad Bradley

FITTED TO: 1:48TH ACADEMY A-10C KIT 12348

PHR48160 A-10 ENGINE / INTAKE UPDATE

- Always Wash parts before gluing and painting
- CA Cyanoacrylate (super) glue is required to glue parts
- Do not inhale Resin dust or particles
- Wear Eye and dust protection when cutting, scraping or sanding parts

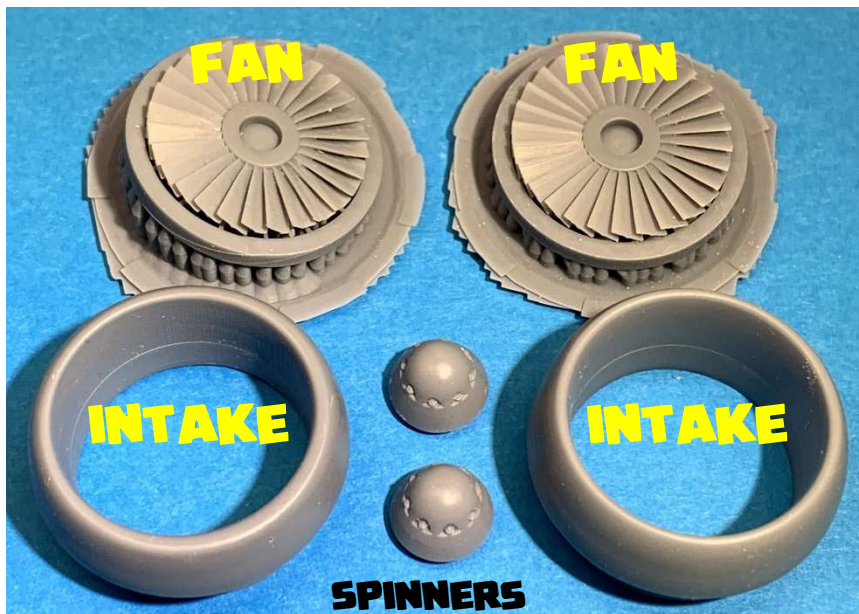
Unassembled Model Kit, Glue & Paint
Not Included, NOT a TOY, Adult
Collectors - Ages 14+, Small Parts, Resin,
Resin Kit Experience Required

Kit Contents 3D Printed RESIN

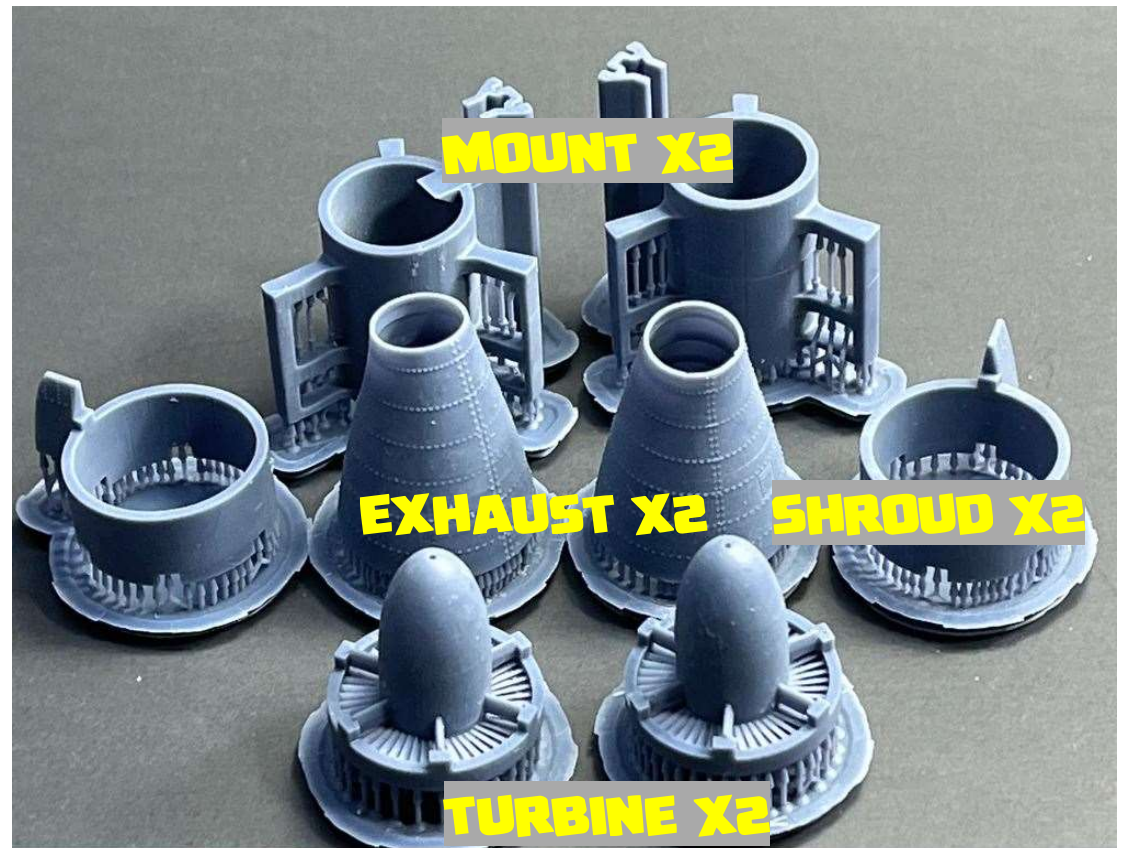
- FAN (x 2) SPINNER (x 2) INTAKE (x 2)

- TURBINE (x 2) EXHAUST (x 2) Shroud (x 2) Mount (x 2)

Intake Parts 48160 & 48158



Exhaust Parts 48160 & 48159



SET DESCRIPTION

This update set is available in 3 versions – Combo (48160), Intake (48158) or Exhaust (48159). The set contains parts to easily upgrade the 1/48th ACADEMY A-10C kit (12348) to a more accurate A-10 engine configuration. The kit includes accurate GE-TF34 intake cones and their corrected Intake fans- with separate spinners and/or the correct raised-rib exhaust cones with separate turbine sections.



For reference, we recommend REID PUBLICATIONS's fabulous book – The Modern Hog Guide, 2nd Edition by Jake Melampy. (Available from REIDAIRPUBLISHING.COM - Current A-10C Decals are also available from REID AIR PUBLICATIONS. Photos from the book are Copyright Jake Melampy.

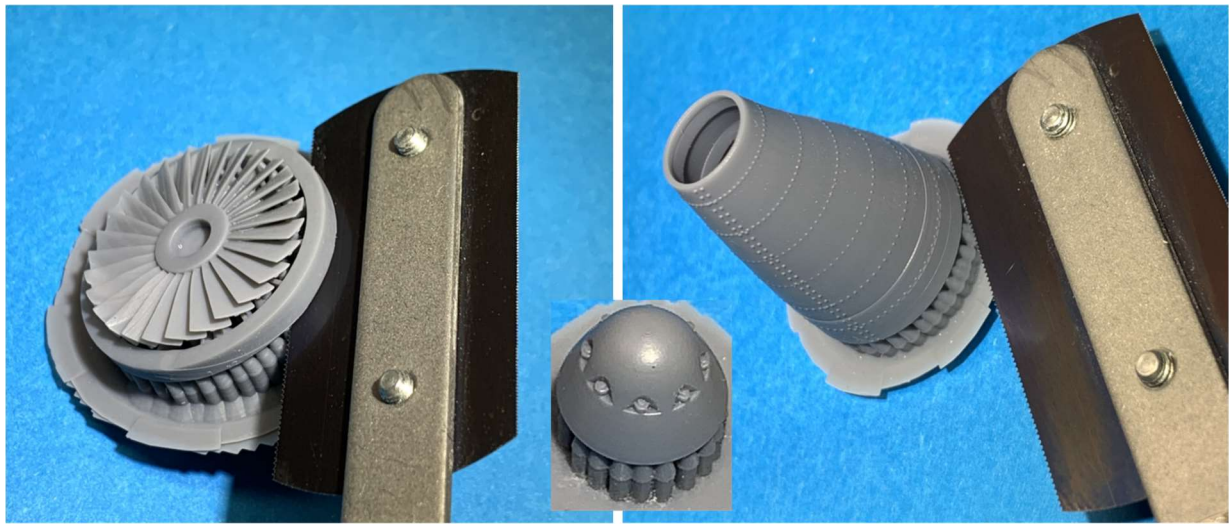


Photos Copyright Jake Melampy 2023

Prepare 3D PRINTED RESIN Parts

Remove all 3D printed parts from their Supports and clean-up support connection locations. *NOTE: PHR 3d Printed parts may come with or without 3D printed supports -this is because printing technologies are constantly evolving and PHR will always use the best process to deliver the best product to the modeller.*

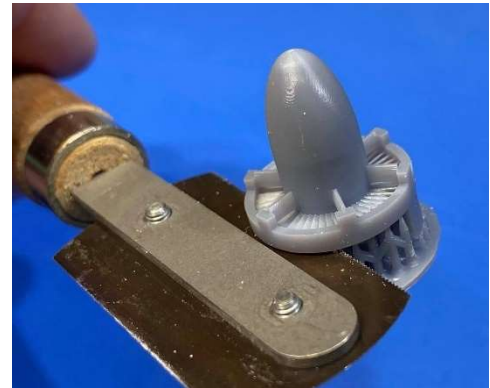
The Intake fan can be just removed from the main supports, as shown. There are many tiny, non-visible, supports under each fan that can also be removed if desired, but due to the scale thickness of the fan blades, there is a risk of snapping the blades – remove these supports at your own risk.



3D printed resin parts are super detailed and accurate however the resin can be brittle and snapping the parts from their printing supports will nearly always leave a 'divot' in the part. This divot may or may-not require filling depending on its location on the finished part. CA or filler can be used to repair.

TIP: Using a razor saw is the only way to remove the 3D printed supports without damaging the parts- cutting with nippers will usually cause a divot. It is recommended to cut with a little extra material remaining and then flat sand the parts to fit exactly.

NOTE – it is likely that UV Resin, used in 3D printing is toxic if ingested, so please use a mask when sanding and beware of the resin dust. Wet sanding is recommended.



Prepare KIT Parts

The new parts are designed to replace the kit parts without any cutting when using the combo set. Some trimming and sanding of kit parts maybe required to achieve an exact fit.

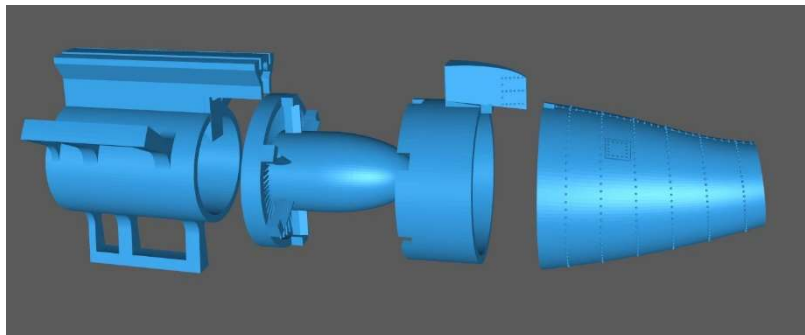
If Using Kit Exhausts If using only the intake set, you will need to use the kit exhausts – Parts D30 & D31.

Assemble Parts

NOTE: EXHAUST & TURBINE must be installed before the front INTAKES.

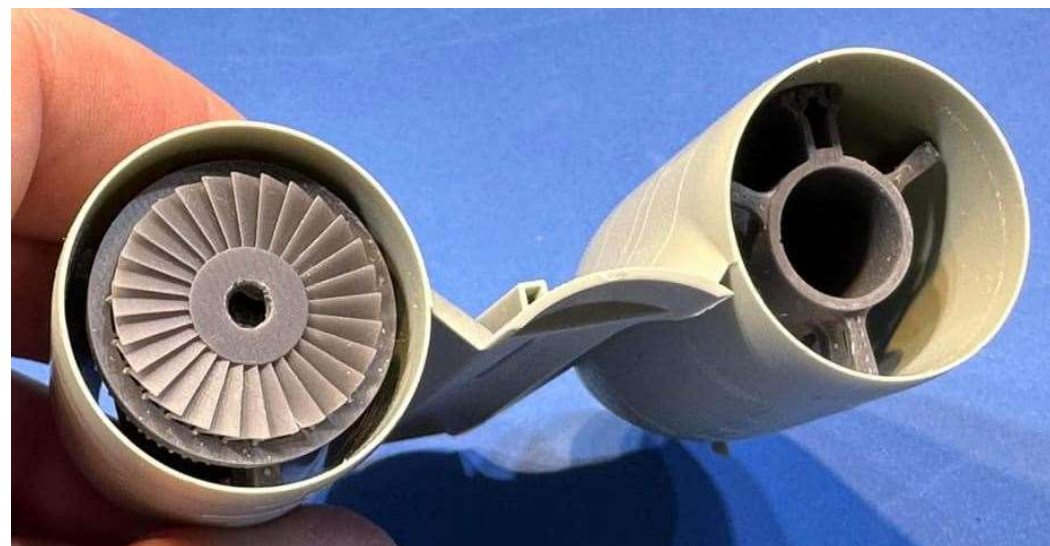
Carefully dry fit all parts and ensure alignment. Make any needed adjustments by minor sanding or edge clean-up.

Paint the interior of all the turbine parts before gluing together.



Glue the exhaust to the turbine shroud and then to the turbine face using the alignment tabs. Glue the turbine assembly to the Mount Part.

Feed the Completed exhaust assembly into the engine nacelles from the front while using the top guide bar to align to the slot in the nacelles. Glue the assembly in place using the 4 mounting rails.



If using the combo set, then the fan can be glued to the front of the exhaust assembly as shown above. Then proceed to Glue the Spinner to the centre of the Fan.

If just using the INTAKE SET 48158 – Fan can be mounted directly into the intake.

Carefully push the fan into the intake from the rear. This fit is snug and care should be taken as the fins are fragile. Fit the new intake and fan assembly to the front of the engine housings. Glue in place and sand if required.

