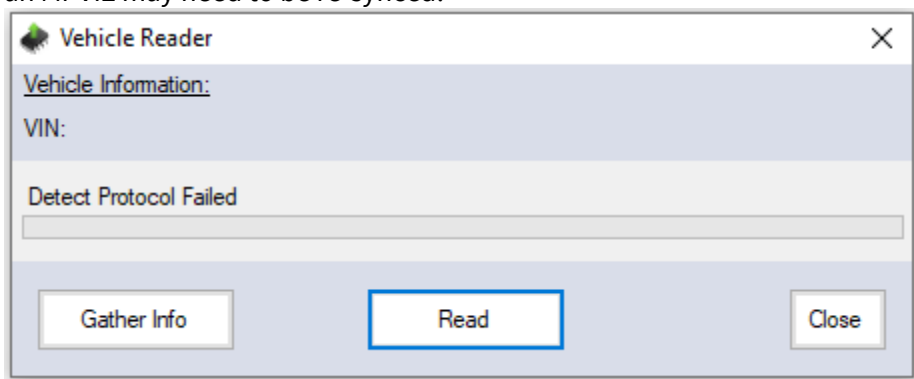


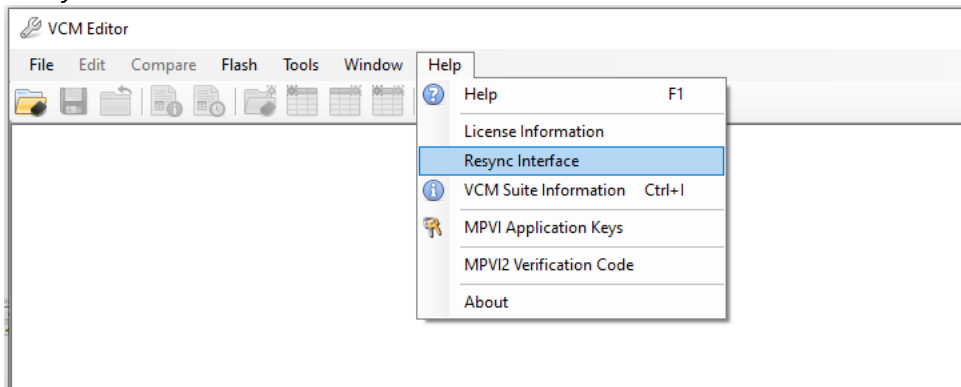


Detect Protocol Failed

The Detect Protocol Failed error is generally caused by either noise in the vehicle's communications or an MPVI2 may need to be re-synced.



If you have an MPVI2, first ensure your computer is connected to the internet, Click "Help" and choose "Resync Interface".



If you Resync and the issue persists or have an MPVI we would suggest using a Bench Harness to read and flash the vehicle.

If you try all the above and still have an issue please open a support ticket by emailing: support@vcmpperformance.com.au

