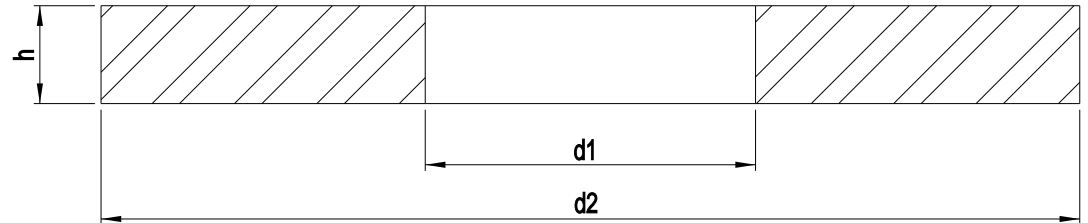


## Further Information

Diameter (d)	d1	d2	h
M2	2.34-2.20	7.00-6.64	0.90-0.70
M2.5	2.84-2.70	8.00-7.64	0.90-0.70
M3	3.38-3.20	9.00-8.64	0.90-0.70
M3.5	3.88-3.70	11.00-10.57	0.90-0.70
M4	4.48-4.30	12.00-11.57	1.10-0.90
M5	5.48-5.30	15.00-14.57	1.40-1.00
M6	6.62-6.40	18.00-17.57	1.80-1.40
M7	7.62-7.40	22.00-21.48	2.20-1.80
M8	8.62-8.40	24.00-23.48	2.20-1.80
M10	10.77-10.50	30.00-29.48	2.70-2.30
M12	13.27-13.00	37.00-36.38	3.30-2.70
M14	15.27-15.00	44.00-43.38	3.30-2.70
M16	17.27-17.00	50.00-49.38	3.30-2.70
M18	20.52-20.00	56.00-54.10	4.60-3.40
M20	22.52-22.00	60.00-58.10	4.60-3.40
M24	26.34-26.00	72.00-72.10	6.00-4.00
M30	34.00-33.00	92.00-89.80	7.00-5.00
M36	40.00-3.009	110.00-107.80	9.20-6.80



**BoltWorld**  
lets bring things together.....

DIN 9021 FLAT WASHER

Information in this drawing is provided for reference only