

Fig. 1688 Three-way Univent

The Figure 1688, Three-way Univent is designed for use on vented hot water systems to ensure that there is always a direct connection from the boiler/ calorifier to the atmosphere. Made from body materials resistant to stress corrosion cracking, it can be used for single or multi-boiler installations.

In-line servicing, using Univent replacement cartridges, allows valve maintenance to be carried out without disturbing the pipework.

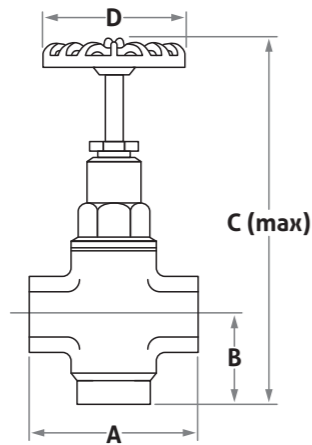
The Univent can be opened and closed using the integral hand wheel. To close the drain port and open the vent, turn the handwheel clockwise to its full travel. Turn the handwheel anti-clockwise to open the drain and close the vent.

Technical Data

Max pressure: 7 bar
Max temperature: 93°C
Connections: BS EN 10226-1:2004 – Rp (Female)

Materials:

Body: Bronze (Gunmetal)
Head: Bronze (Gunmetal)
Trim: Brass
Spindle: Brass bar
Renewable Seat: EPDM



Nominal Size	Product code	A	B	C (max)	D	Weight kg
25mm (1")	UV-1688-025D	96	47	200	89	1.83
32mm (1 1/4")	UV-1688-032D	118	63	237	102	2.93
40mm (1 1/2")	UV-1688-040D	144	74	269	127	4.39
50mm (2")	UV-1688-050D	160	79	283	152	6.10
65mm (2 1/2")	UV-1688-065D	190	115	395	200	14.25

Univent Replacement Cartridge (Fig.1688 only)

Replacement cartridges for the Three-way Univent valve allow rapid in-situ servicing.

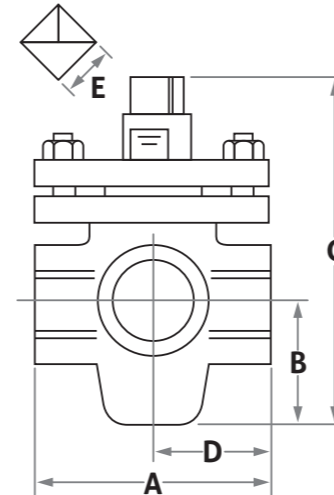
Size	Product Code
25mm (1")	UV-SP-1688-025
32mm (1 1/4")	UV-SP-1688-032
40mm (1 1/2")	UV-SP-1688-040
50mm (2")	UV-SP-1688-050
65mm (2 1/2")	UV-SP-1688-065



Fig. 1988 Three-way Vent Cocks

The Figure 1988 is resistant to stress corrosion cracking and used on single, multi-boiler or calorifier installations. Fitting a Three-way Vent Cock ensures a constant connection from the boiler or calorifier to the atmosphere.

Lever are available as an optional extra.



Technical Data

Max pressure: 7 bar
Max temperature: 93°C
Connections: BS EN 10226-1:2004 – Rp (Female)

Materials

Body: Bronze (Gunmetal)
Plug: Bronze (Gunmetal)
Gland: Bronze (Gunmetal)

Normal size	Product code	A	B	C	D	E
25mm (1")	VCN-LA-025	90	43	132	45	18
32mm (1 1/4")	VCN-LA-032	122	48	155	56	20
40mm (1 1/2")	VCN-LC-040	143	57	177	68	25
50mm (2")	VCN-LC-050	165	66	204	80	36

Valve Levers

Size	Product code
25mm (1")	VC-LA-025
32mm (1 1/4")	VC-LA-032
40mm (1 1/2")	VC-LC-040
50mm (2")	VC-LC-050

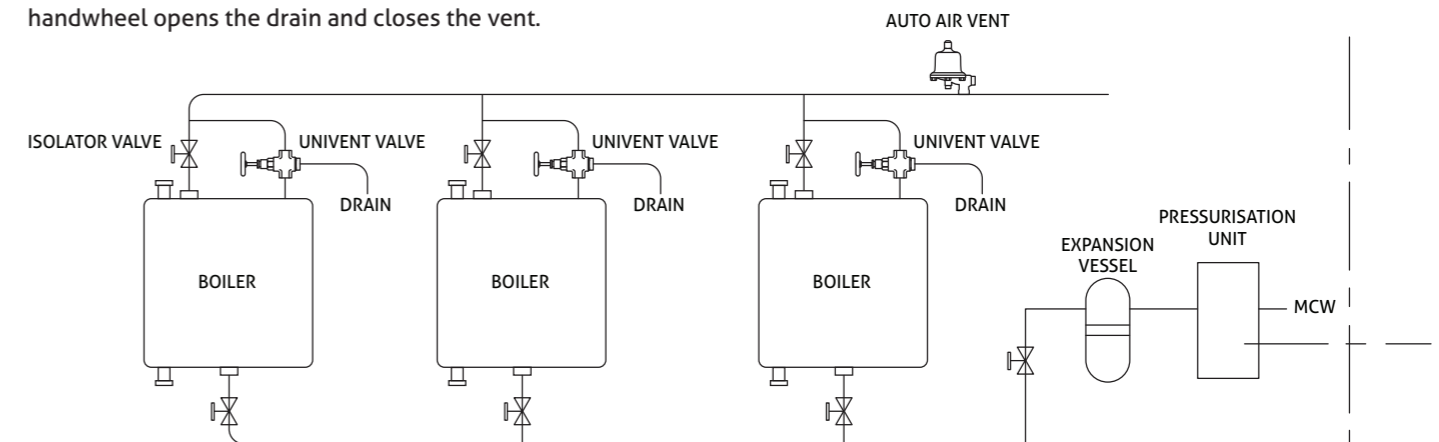


Typical Multi-Boiler System incorporating Brownall Univents/Vent cocks Fig.1688/1988

The use of screw-down valves for multi-boiler hot water installations can allow the use of a single vent pipe to serve any number of boilers. No boiler in the system can be left in an unvented condition irrespective of the selected settings of the valves. At all times the vent valve ensures a full bore exit from the boiler to atmosphere.

In operation, clockwise turning of the handwheel closes the drain and opens the vent. Anti-clockwise rotation of the handwheel opens the drain and closes the vent.

Note: The diagram shown is schematic and is not intended as a guide to the installation of the vent valves. It is essential that vent valves are fitted in accordance with the manufacturer's recommendations and comply with Health and Safety regulations etc.



Please note Three-way Univents and Three-way Vent Cocks are interchangeable.