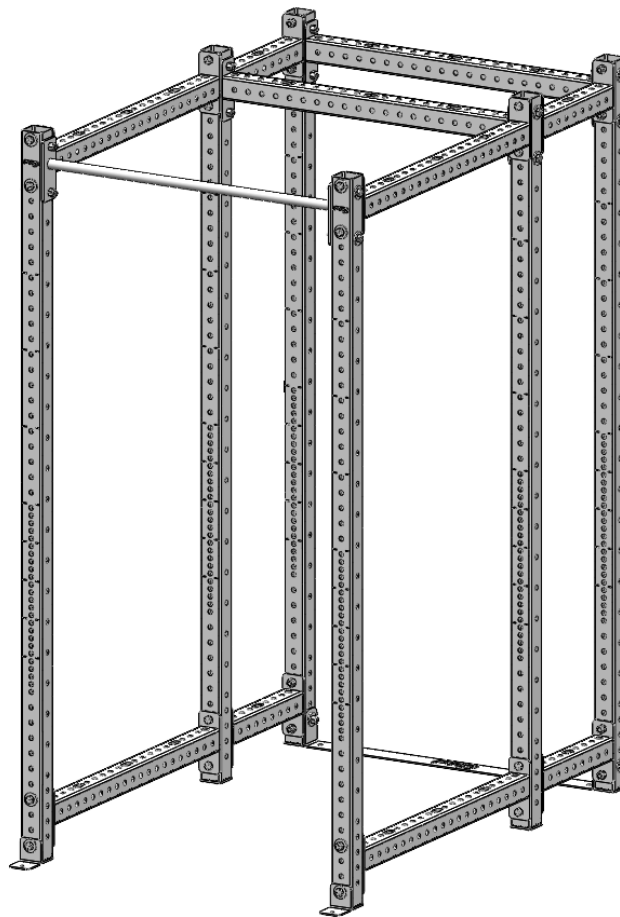
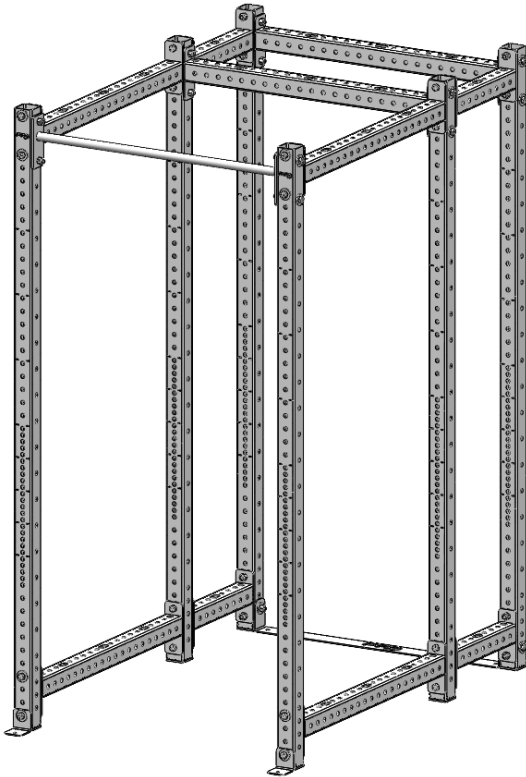




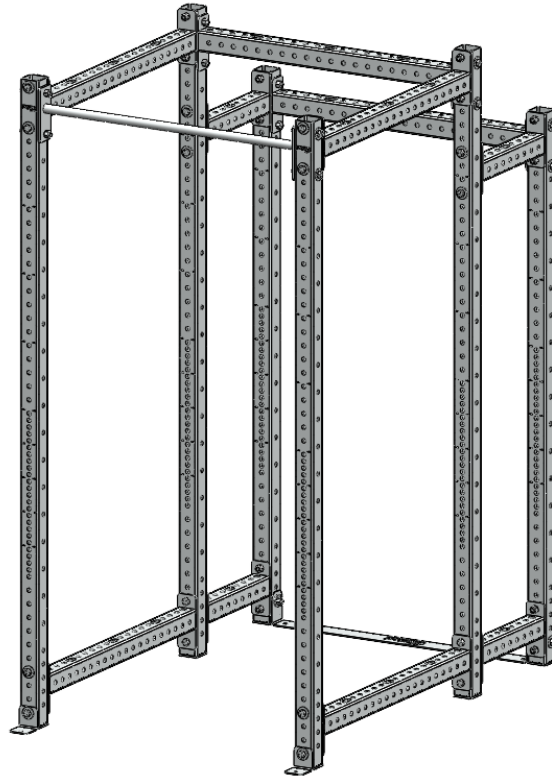
Build Limitless® 6-Post Rack



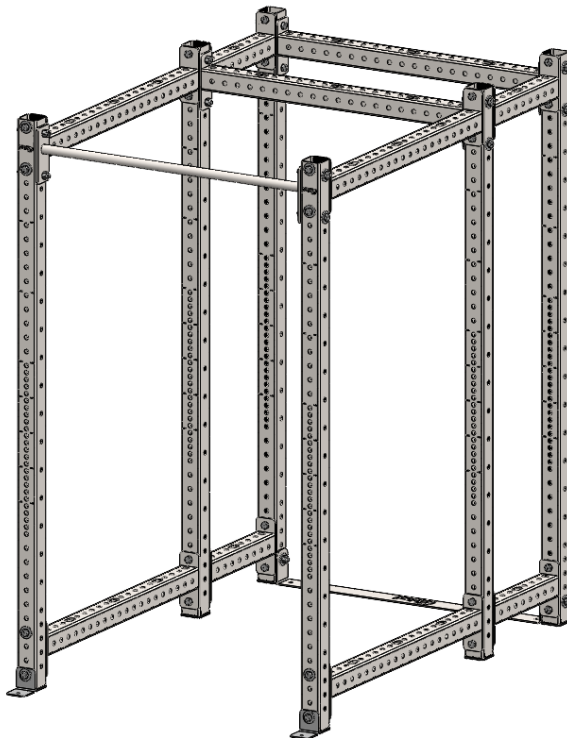
Models Covered in These Instructions



6-Post, 95/95/95



6-Post, 95/95/81



Build Limitless® 6-Post

All Parts & Tools Needed

	Configuration	6-Post 95/95/95	6-Post 95/95/81	6-Post 81/81/81
Item #	Description	QTY	QTY	QTY
1	Upright, 95" or 81"	6	4/2	6
2	Crossmember, 42"	6	6	6
3	Crossmember, 18"	4	4	4
4	Angle Foot	2	2	2
5	42" Pull-Up Bar	1	1	1
6	Spreader Floor Plate	1	1	1
7	5/8" x 4 1/2" Hex Bolt	14	10	14
8	5/8" x 4 1/4" Hex Bolt	24	32	24
9	5/8" Flat Washer	32	40	32
10	5/8" Nylock Nut	38	42	38

Tools Needed

1. 15/16" Open-End Wrench
2. 15/16" Socket
3. Socket Wrench
4. Step Stool
5. Second Person

Additional Items Needed

(not included):

1. Floor mounting hardware

Assembly Notes:

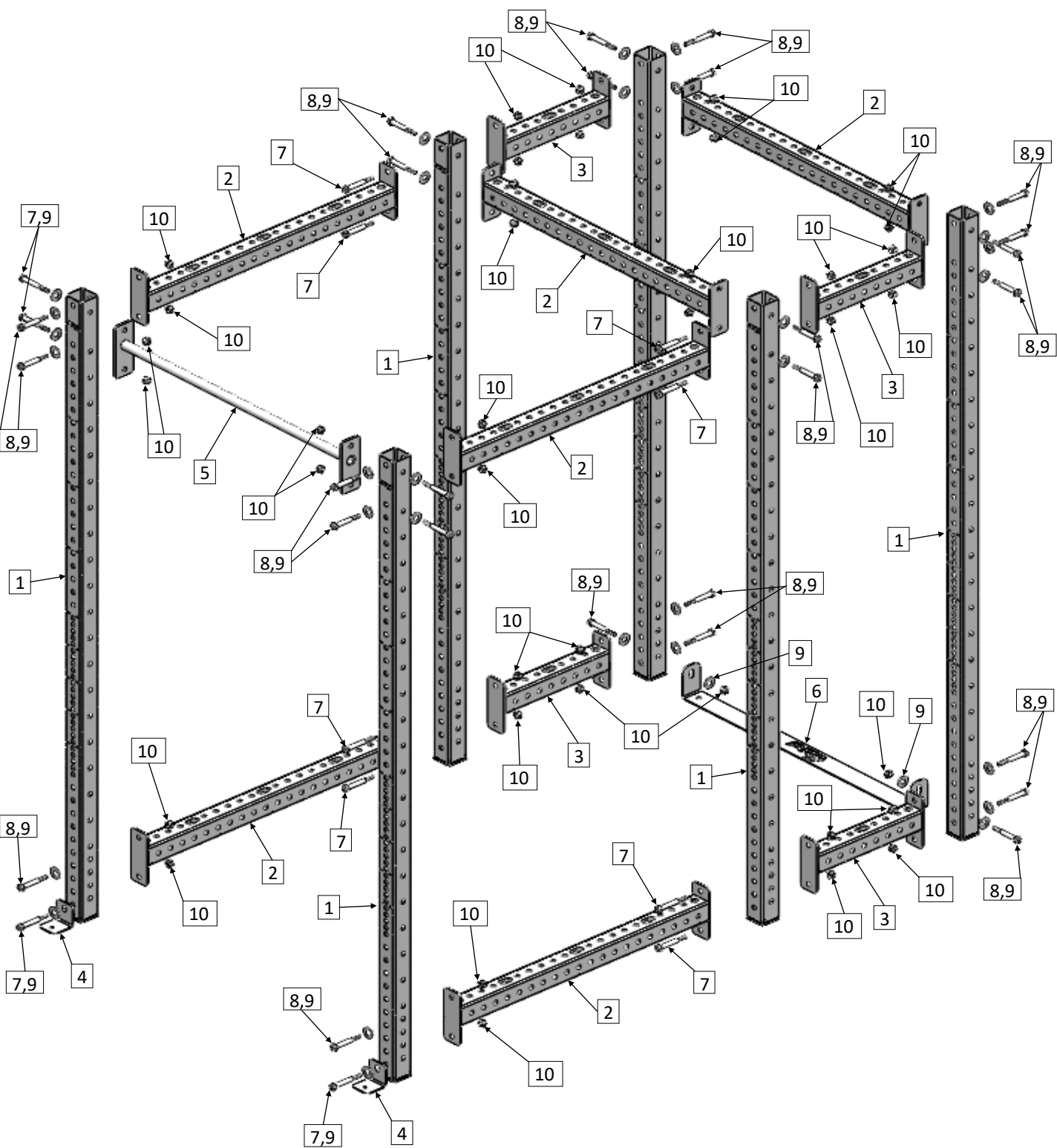
- 4 1/2" bolts are used on the pull-up bar, angle foot, and middle uprights where crossmembers are connected to both sides. 4 1/4" bolts are used everywhere else.
- Flat washers are only needed where a bolt head is directly contacting an upright, an angle foot, or spreader plate.

WARNING: SERIOUS INJURY OR DEATH COULD OCCUR IF PRECAUTIONS ARE NOT TAKEN.

All questions, feedback, and return information should be sent to: support@prxperformance.com or call us at 1-701-566-0452

LIMITED LIFETIME WARRANTY: This product is warranted by PRx Performance LLC, to the original user-owner only, against defective materials or workmanship for the lifetime of the product. During the warranty period, or "lifetime" of the product, at the discretion of PRx management, if the product is found to be defective, it will be repaired or replaced without charge. This warranty does not cover defects in the product caused by ordinary wear and tear, abuse, misuse, overloading, accident (including shipping damage), improper maintenance or alteration. THIS WARRANTY IS EXPRESSLY IN LIEU OF ALL OTHER WARRANTIES, INCLUDING ANY IMPLIED WARRANTY OF MERCHANT ABILITY OR ANY IMPLIED WARRANTY OF FITNESS FOR A PARTICULAR PURPOSE OF THIS PRODUCT. PRx PERFORMANCE INC. SHALL NOT BE LIABLE FOR ANY CONSEQUENTIAL OR INCIDENTAL DAMAGES. Email support@prxperformance.com or call 701-566-0452. See full warranty at www.prxperformance.com

6-Post Exploded Assembly View



6-Post Rack Assembly Instructions

1. Start with the middle portion of the rack, making sure the logo is on the back side of the upright (Figure 1).
2. When attaching the crossmembers, be sure to orient them correctly (see Min. and Max. in Figure 1).
3. Assemble frame. Secure hardware but do not to fully tighten. **NOTE: Do not overtighten any of the bolts as this could result in deformed uprights and make it difficult to assemble additional components.**

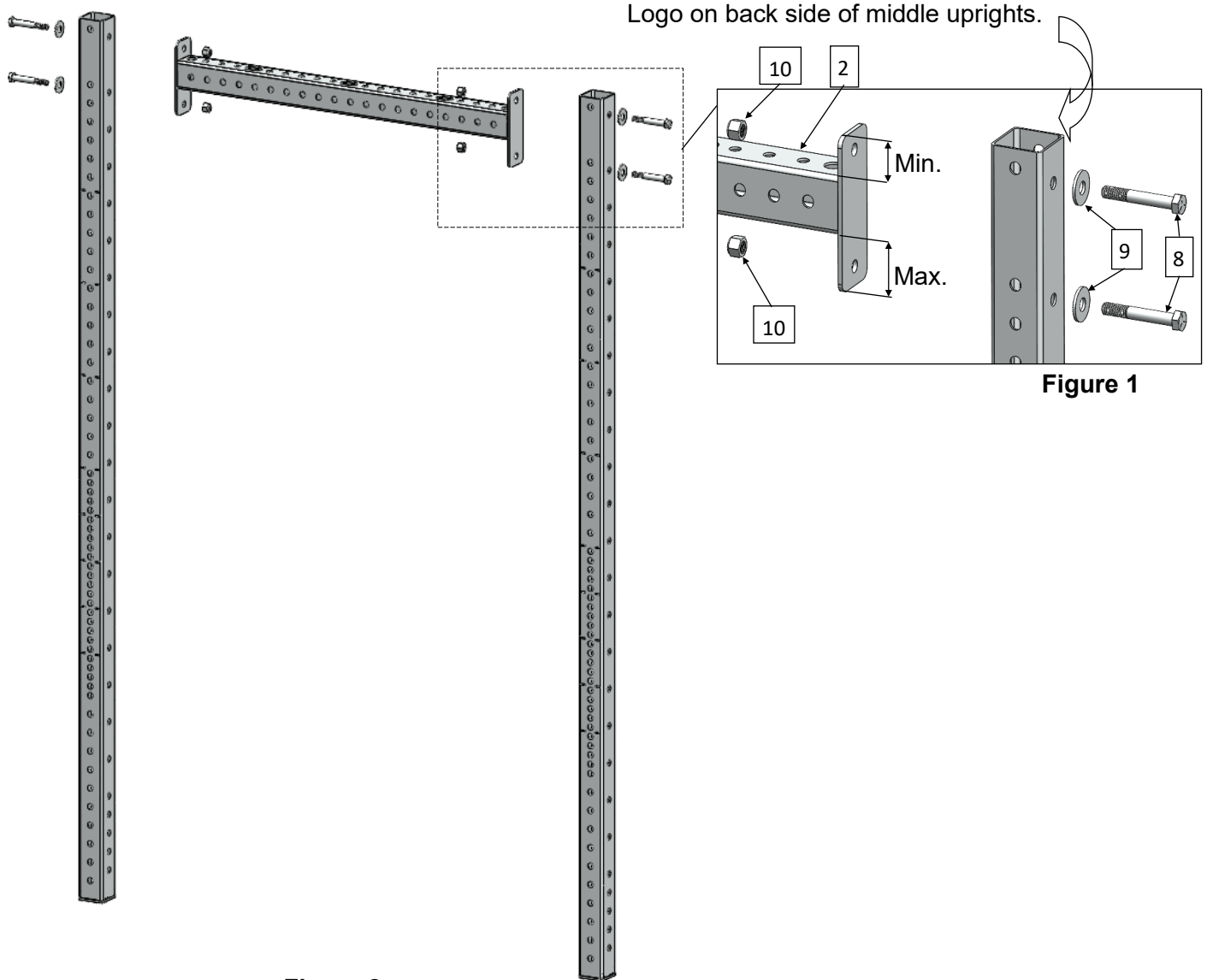


Figure 2

6-Post Rack Assembly Instructions

1. With someone holding the middle frame, attach the 42" and 18" crossmembers to the bottom of the frame. When attaching the crossmembers, be sure to orient them correctly (see Min. and Max. in Figures 3 & 4). The crossmembers need to be assembled this way for future accessories to fit properly.
2. Attach 42" and 18" crossmembers to the top of the frame (Figures 3 & 4).
3. Next, attach the front and rear uprights to the newly installed crossmembers (Figures 3 & 4).
4. Attach angle foot (Figure 4).
5. Once both uprights are attached, place the spreader plate at the bottom rear of the rack.
6. Secure all the hardware but do not fully tighten. Repeat steps 1-5 on the other side of the rack.

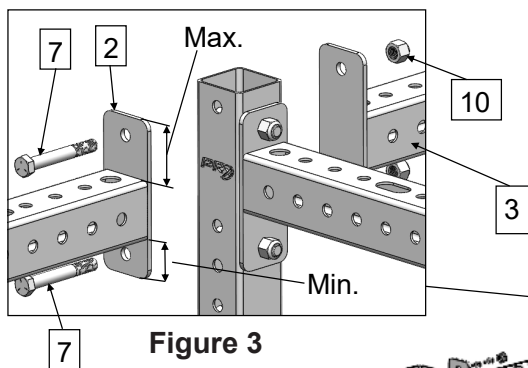


Figure 3

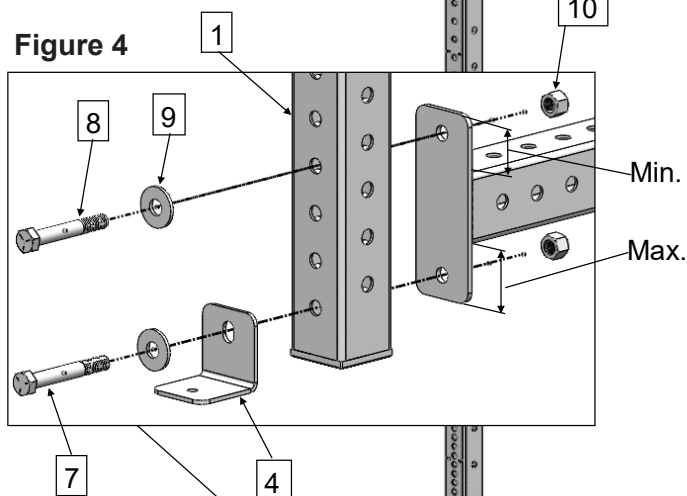


Figure 4

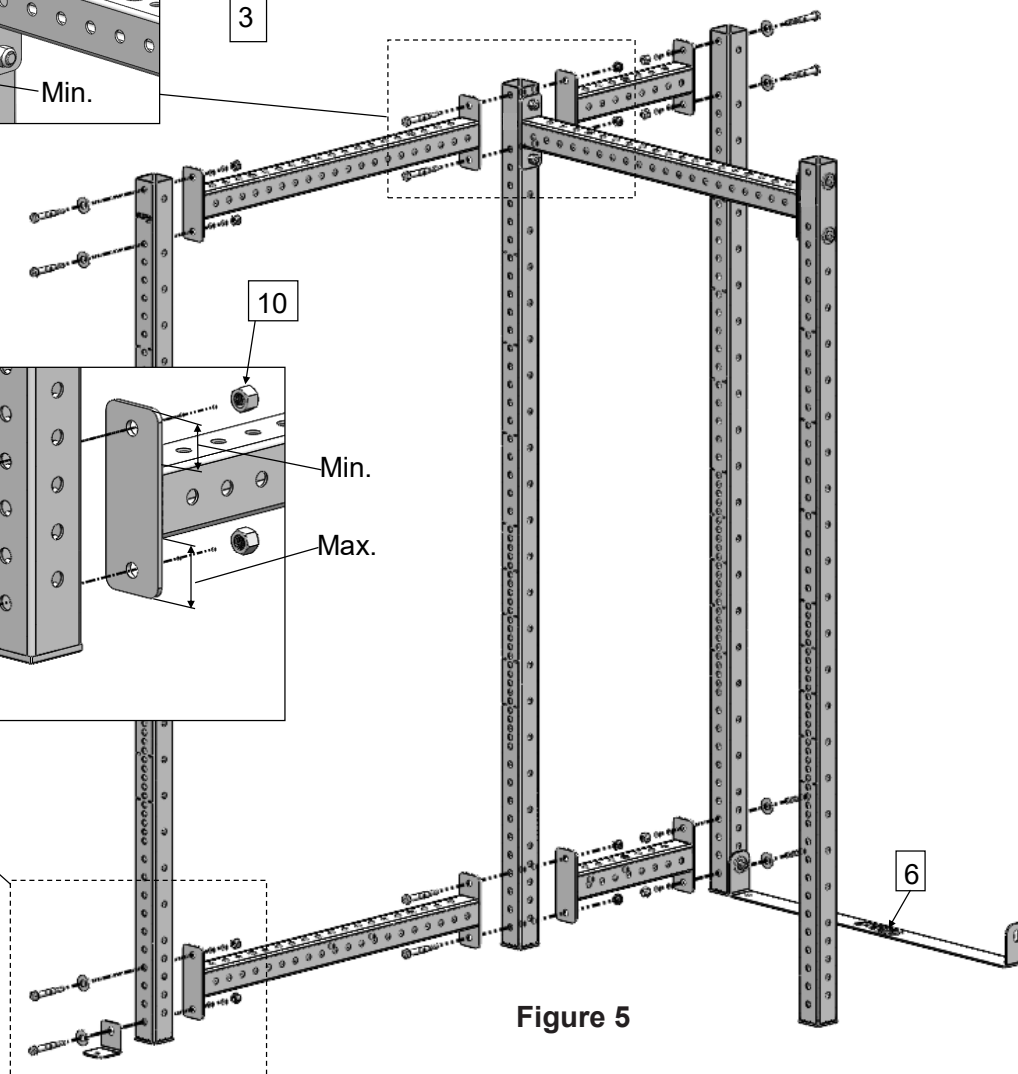


Figure 5

6-Post Rack Assembly Instructions

1. Once the crossmembers and uprights are assembled, attach the pull-up bar between the top of the two front uprights (Figure 6).
2. Now that all components are assembled, make sure the spreader plate is flush to the floor before anchoring rack to the floor.
3. Once rack is anchored to the floor, fully tighten all hardware.

Note: Do not overtighten any of the bolts as this could result in deformed uprights.

