

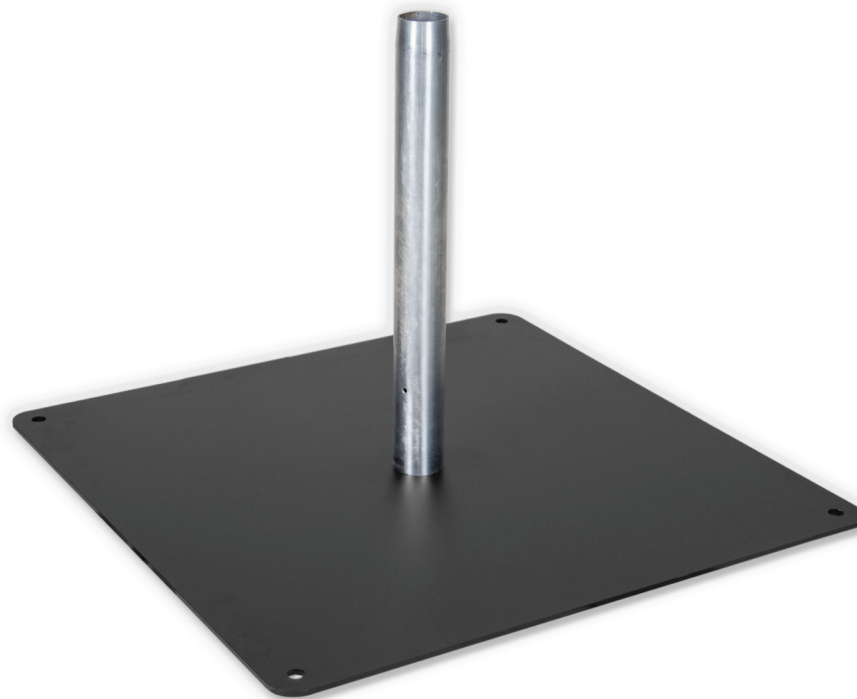


## BASE SPECS



Our bases are designed exclusively to best fit a Mills Parasol.

Either a clean dark steel style or a more elaborate design with marble porcelain, we offer you the most sophisticated base to your fun colourful parasol.



### “JUST BLACK”

**BASE DIMENSIONS** 700X700X6 mm

**BASE MATERIAL** Steel

**TUBE HEIGHT** 500 mm

**TUBE EXTERIOR DIAMETER** 56,5 mm

**TUBE MATERIAL** Galvanized Steel

**TOTAL WEIGHT** 24 kg



### “MARBLE BASE”

**BASE DIMENSIONS** 700X700X16 mm

**BASE MATERIAL** Steel & Marble Porcelain

**TUBE HEIGHT** 500 mm

**TUBE EXTERIOR DIAMETER** 56,5 mm

**TUBE MATERIAL** Galvanized Steel

**TOTAL WEIGHT** 36 kg