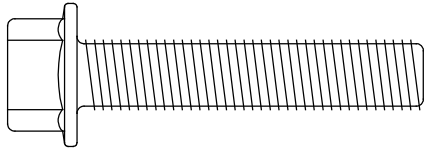
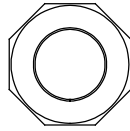


ASR High Performance PTFE Self Lubricating Endlink Kit

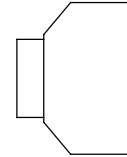
ITEM EK-RE-01



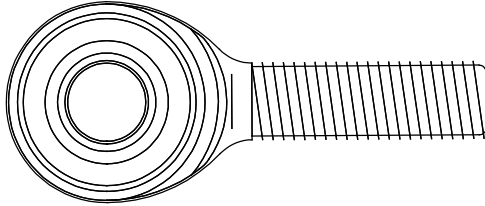
M10X50mm
Flange Bolt
X 4



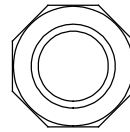
17 X 6mm
Nut
X 2



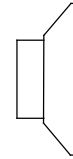
13mm
Cone Spacer
X 2



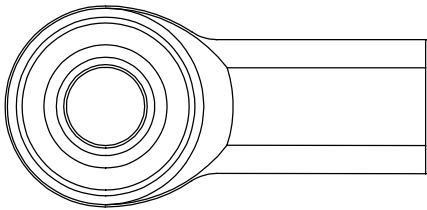
Male Rod End
X 2



17 X 10mm
Self-locking Nut
X 4



5mm
Cone Spacer
X 6

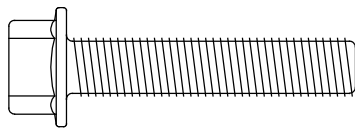


Female Rod End
X 2

NOTE:

- * For use with ASR 24mm swaybars
- * 96-00 Civic using DC2 Type R anti roll bar require adaptor kit EK-EA-01
- * Design for stock lower arm

* Left Hand Side Shown

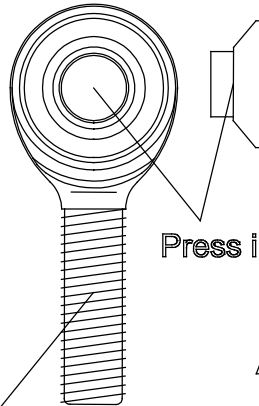
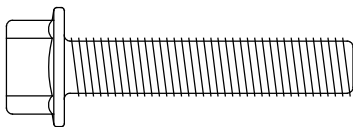


← Outwards

Warning

Be sure both endlinks has same length as it may cause uneven handling and rapid wear.

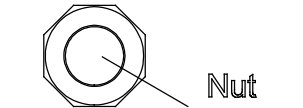
Thread in all the way.
Female and Male Rod End
must be in 90 degree phase.



Press in Sleeve

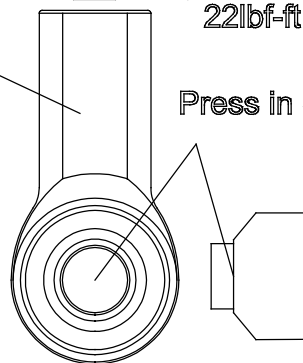
Self-locking Nut
22lbf-ft

Anti Roll Bar



Nut
22lbf-ft

Press in Sleeve



Inboard Side

Self-Locking Nut
22lbf-ft

Lower Arm



A-Spec Racing LLC. Chatsworth, CA
WWW.ASRPARTS.COM
MADE IN USA

TIP

- * Adjust Endlinks to minimum length is ideal for most conditions.
- * Manipulate 13mm cone spacer location to achieve vertical endlink position at ride height.
- * If the sleeve will not press in by hand put on a table and tap gently with hammer.