

# RELENTLESS FABRICATION JEEP JL/JT FRONT STUBBY BUMPER

## INSTALLATION GUIDE

---

### THANK YOU FOR YOUR PURCHASE!

Note: we recommend professional installation on all of our products. Please fully read install guide prior to attempting installation to ensure you have a complete understanding and all required tools and procedures. If you are not confident in your ability to complete the procedure please seek professional installation. Be aware that the bumper is heavy! We recommend 2 people to lift the bumper into position to secure it to the vehicle. **We assume no responsibility for any injury or property damages from installation or use of our bumper.**

#### TOOLS REQUIRED:

- ½" and 3/8" Drive Ratchet set with Deep/shallow sockets and Extensions, metric and SAE.
- Standard and/or ratchet wrench sets, metric and SAE
- Flat screw driver or trim clip tool
- pliers, diagonal cutters
- Wiring tools/connectors/loom/etc for any lights or other accessories you plan to install.
- Torx, and Hex key/Allen bit set

#### INCLUDED HARDWARE:

- 8) #8 screws/nylocs for mounting fog lights
- 4) 3/8"x1.25" bolts with nyloc nuts and washers
- 2) Winch plate support brackets
- 8) 7/16" nyloc nuts and washers for main bumper studs

*We always recommend working on a clean and dry vehicle that is securely parked on a hard flat surface and parking brake applied. We STRONGLY recommend wearing safety glasses throughout the install process to keep debris from within the bumper/fenders from falling into your eyes while under the truck.*

Read each step of the install procedure fully before beginning that step.

**STEP 1:**

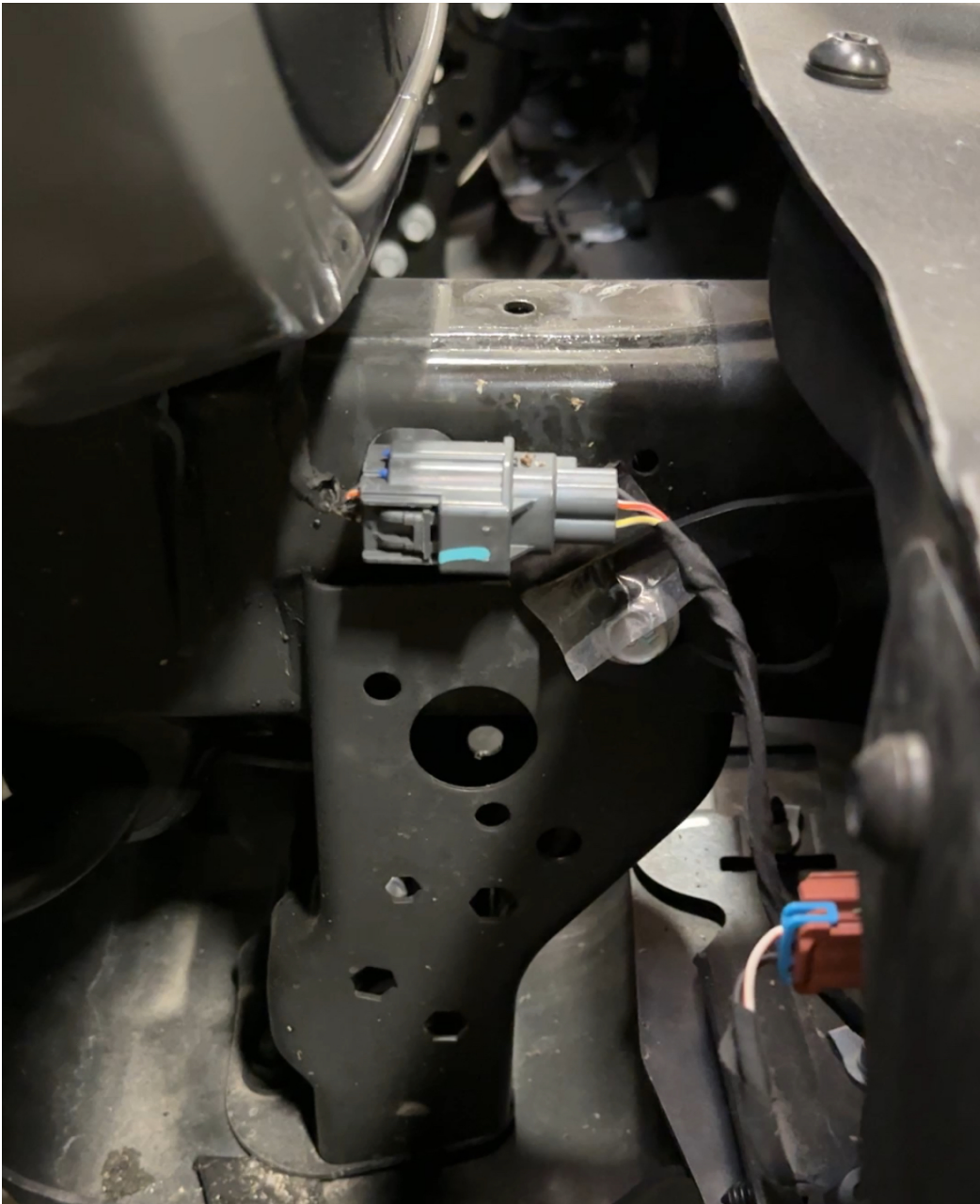
Preparation and original bumper removal:

Double check all listed hardware is present and you have all necessary tools before starting.

Remove plastic bumper top trim panel by popping the heads up on the 2 plastic push pins and then lifting the panel up off the top of the frame; discard this panel it will not be reused.



Disconnect the fog light wiring harness connector at the outer side of the passenger frame rail near the lower corner of the grille.



Remove the lower skid plate/splash panel via 4 visible bolts as well as the 2 mounting brackets off the lower frame 'tusks' secured with 2 bolts per side. Retain the bolts that secured this bracket to the 'tusks' as they will be used later in the installation process. If

equipped with the steel bumper there will be additional bolts to remove all along the lower edge of the bumper securing the skid plate to it.

With the wiring between bumper and frame separated and skid plate removed the bumper assembly can now be removed as a whole. There are 4 bolts securing the bumper per frame end, 2 accessed inside the frame rails and 2 bolts on each outer edge of the frame rails. Loosen and remove all 8 nuts to free the bumper.

Remove the original bumper from the vehicle by sliding the studs forward out and away from the vehicle. Set bumper assembly aside.

Your original bumper will need to be disassembled internally to free the fog light wiring harness if you wish to reuse it for wiring lights into the new bumper. If your vehicle has a plastic bumper and optioned with LED factory fog lights these can be transferred into the new bumper and secured with the 8 included screws/nuts. The fog lights from a steel bumper equipped model are different and are not compatible.

## **STEP 2:**

Relentless Bumper install: We are now ready to prep your new bumper!

Transfer over your fog lights from the old bumper if desired and mount them into the new bumper. Alternatively, install your new aftermarket fog lights into the new bumper(Baja Designs squadron shown below).



Install the(optional) Baja Designs S1 lights into the provisions in the face of the new bumper. If you are planning on installing a bulkier winch such as a Warn Zeon series, the bezels of the lights will need to be rotated 180deg and the S1 light housings installed 'upside down' so the cooling fins extend farther into the bumper at the bottom of the light vs the top as they were shipped from the Baja Designs. You can also take this time as an opportunity to swap lens patterns/colors with the bezel removed.

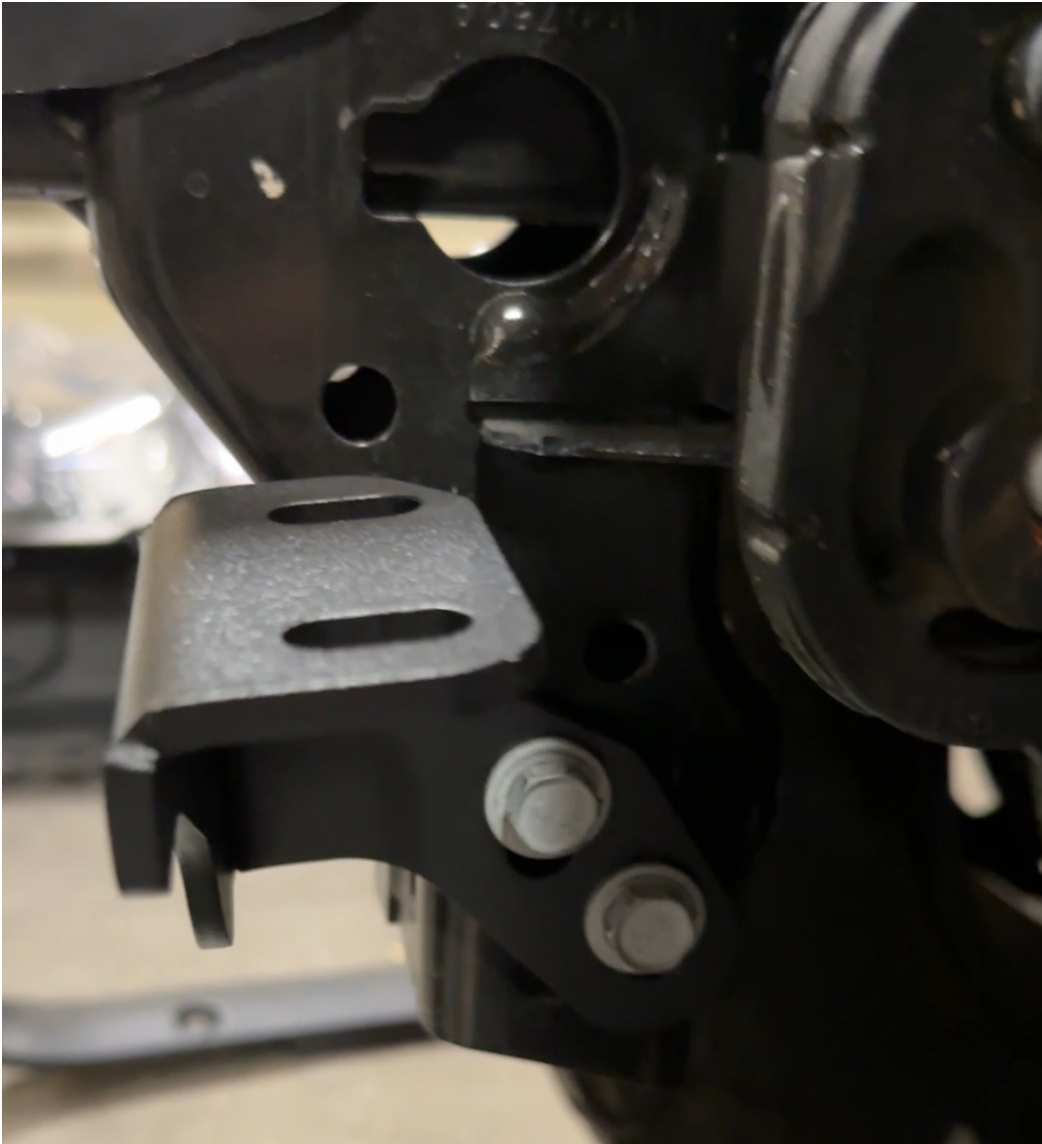


If you plan to mount Aux lights on top of the bumper, do so at this time as well.

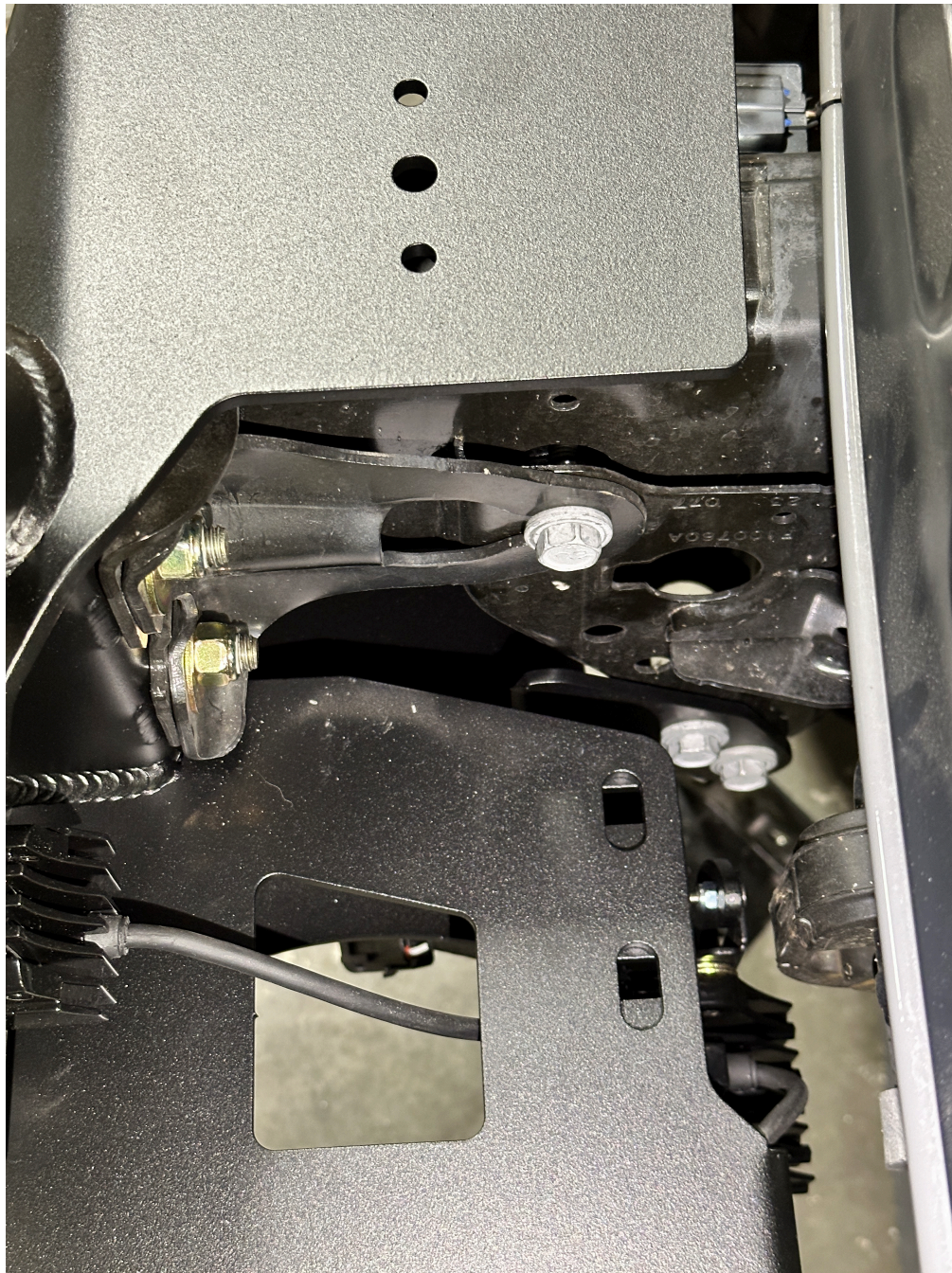
The bumper can now be lifted and slid onto the vehicle frame end plates, then secured tight with the included 7/16 nuts and washers for each mounting stud. 55-60ft/lbs

NOTE: If the bumper fights and does not initially slide right onto the frame ends don't be alarmed. The factory support brackets installed behind the frame ends and secured with 1 bolt to the sides of the frame should be loosened, and the bracket slid back out of the

key way in the bracket to remove them(4 brackets). Sometimes the holes in these brackets do not perfectly line up with the frame end plate holes and initially prevent the bumper from fitting. With the brackets removed, attempt to install the bumper onto the frame end plates again, it should slide straight onto the frame ends with minimal effort. With the bumper hung in place, reinstall the support brackets, then tighten the 8 nuts to the frame ends, then finally the single bolts for each support bracket into the sides of the frame rails.



Next, mount the included winch plate support brackets to the bottom of the winch plate and down to the skid plate bolt locations on the lower frame 'tusks' from earlier. The included 3/8" hardware will secure the brackets to the bottom of the winch plate, the factory bolts will secure the brackets to the frame of the Jeep.



At this point we recommend routing, securing and connecting all wiring for your lights.

After the wiring for your lights is complete your winch can now be installed. Install the fairlead to the front of the bumper first. Then, drop your winch in from the top of the bumper and secure it with the 4 bolts to the bumpers winch plate. Carefully route the winch power and ground cables up to your battery choosing a path free from hot, or rotating components, and/or sharp edges and secure it with zip ties and connect to proper battery terminals.



*Congratulations on completing the installation of your new Relentless Off-Road Fabrication bumper! We hope you enjoy your new bumper for years to come!*

*Be sure to re-check torque on all bolts after the first week or 250 miles of use, and periodically thereafter as parts can settle or rattle loose from continued off-road use.*

*If you have any questions, comments, or concerns please feel free to contact us Mon-Fri 9am-5PM PST at 775-200-0544 or any time via email: [sales@relentlessfabrication.com](mailto:sales@relentlessfabrication.com)*

*We love when customers tag us in their social media posts!*

*Instagram: @RelentlessFabrication*

*Facebook: RelentlessOffRoadFabrication*