

1365 Cahill Drive  
Lexington, KY 40504

## For Your Safety:

Read and understand your lathe's owners manual.  
Don't force the tool to cut, give it time.  
Maintain your tools with a sharp cutter.  
Use the right tool for the job.  
Secure work piece properly.  
Keep work area clean.  
Keep children away from dangerous equipment.  
Wear safe and protective clothing.  
Wear safety glasses and/or face shield.  
Don't mix drugs and machinery.

## Register Your Purchase

Register by EMAIL

To: **register@easywoodtools.com**

Subject Line: "Register" and Your Name

Body of Email:

1. Name
2. Mailing Address
3. Phone Number
4. EWT Item Number
5. Where you purchased
6. Any comments you would like to offer

(If you do not have email, please call us to register at (859) 246-0294.)

### Screw Maintenance

- I. **Clean out the hex socket** of the screw to the point you can see the bottom of the hex socket before inserting hex wrench. This allows the wrench to make full contact with the screw and will prevent you from stripping out the hex socket.

It is best to use a small pick to loosen the dust in the hex and then compressed air to blow it out. *We often use the tip of a paper clip and a can of keyboard cleaner at our demos.*

- II. **Do not over tighten the screw** - Just grip the short end of the hex wrench to lightly hand tighten the screw. This will provide adequate force to secure your cutter. Excessive torque is not required to hold your cutter firmly in place as the proper EWT designed tool will hold the cutter with minimal hex wrench torque.

- III. **Lightly grease your cutter screw threads** - Each time you replace a cutter, use the new screw provided and lightly grease the screw threads. (any old machine grease will do)

**Note:** Turning green (wet) wood projects can quickly lead to rusted screw threads and bind screw into your tool bar. Lightly grease your cutter screw threads each time you rotate your cutter to avoid rusted screw threads.

### Producing High Quality Cuts

1. **You must have a dead sharp cutting edge –**

Dual Cutter Method - The idea here is to use one cutter on each of your tools for all your hogging work and have another dedicated cutter set aside that you install on the tool for those final cuts only.

This 'final pass' cutter will stay sharp for a very long time with this light use. When it no longer performs final cuts to your liking just use it for your 'hogging' cutter and replace your 'final pass' cutter with a factory new one. **This will increase the overall value of your cutter investment.**

2. **Travel tool slowly across the work surface**

**Significantly** reduce the rate at which you move the tool along the cut to give the tool more time to cut as clean as possible. The slower the travel, the cleaner the final cut.

## California Proposition 65 Warning

Proposition 65 is a California law that applies to any product(s) sold in California.

Some products sold by Easy Wood Tools contain chemicals known to the state of California to cause cancer and birth defects or other reproductive harm. A Proposition 65 warning means one of two things: (1) the business has evaluated the exposure and has concluded that it exceeds the "no significant risk level"; or (2) the business has chosen to provide a warning simply based on its knowledge about the presence of a listed chemical without attempting to evaluate the exposure.

Easy Wood Tools, LLC has chosen to provide a warning based on its knowledge about the presence of one or more listed chemicals without attempting to evaluate the level of exposure. With products on EWT's website, the exposure may be below the Proposition 65 level of concern, or could even be zero. However, out of an abundance of caution, Easy Wood Tools, LLC has elected to place the Proposition 65 warning notification on all its products.

This product may contain chemicals known to the State of California to cause cancer and birth defects or other reproductive harm.

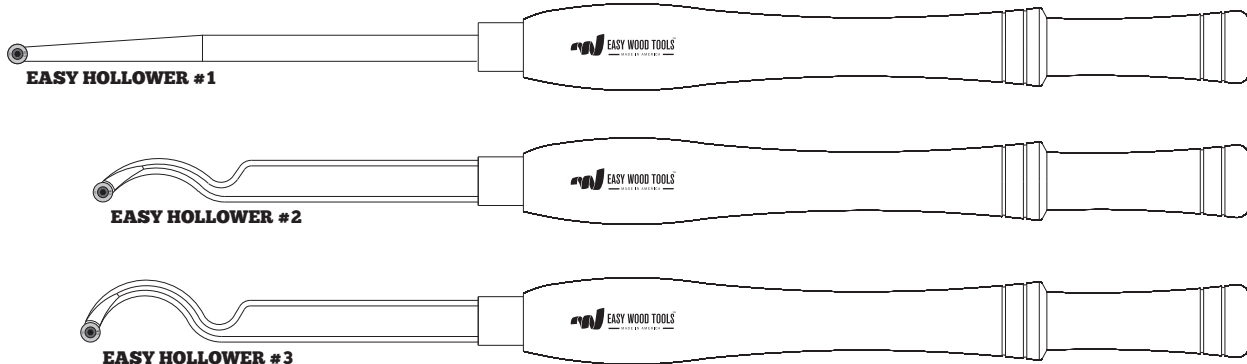
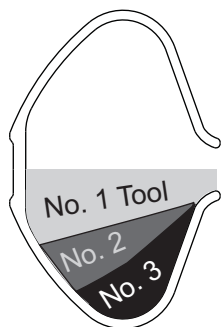
Some dust created by power sanding, sawing, grinding, drilling, and other construction activities contains chemicals known to the State of California to cause cancer and birth defects or other reproductive harm. Some examples of these chemicals are:

- lead from lead-based paints,
- crystalline silica from bricks and cement and other masonry products,
- arsenic and chromium from chemically treated lumber.

Your risk from exposure to these chemicals varies, depending on how often you do this type of work. To reduce your exposure, work in a well-ventilated area and with approved safety equipment, such as **dust masks** that are specially designed to filter out microscopic particles.

The revolutionary progressive hollowing system for all skill levels

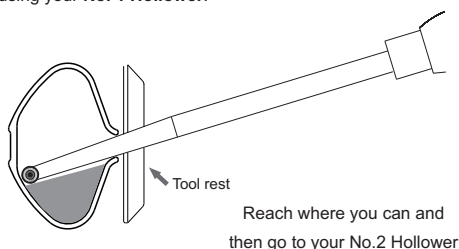
**Now in many shapes and sizes for all your hollowing**



## Use each tool in progression for maximum fun

### EASY HOLLOWER #1

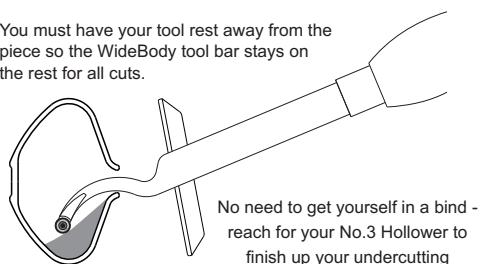
Keep the tool rest up close to your work piece when using your **No. 1 Hollower**.



### EASY HOLLOWER #2

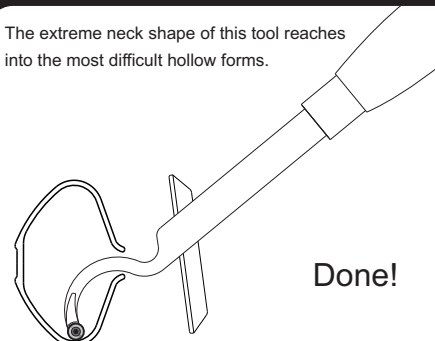
The neck shape of this tool is great for clearing out the intermediate area in all of your hollow forms.

You must have your tool rest away from the piece so the WideBody tool bar stays on the rest for all cuts.



### EASY HOLLOWER #3

The extreme neck shape of this tool reaches into the most difficult hollow forms.



## Good Start

Hollow forms can be super fun to make when you have the right tools and you build your skills properly!

Let's talk about hollowing safety before you get started - you are generally passing your tools through a small hole, you cannot see your cutting edge and you must often extend your tool considerably out over the support of the tool rest. This all means you must be on top of your game by really understanding all the forces involved with these procedures.

Easy Hollowers no doubt make hollowing simpler and more fun for all skill levels but let's get you off to a good start by working safe and smart

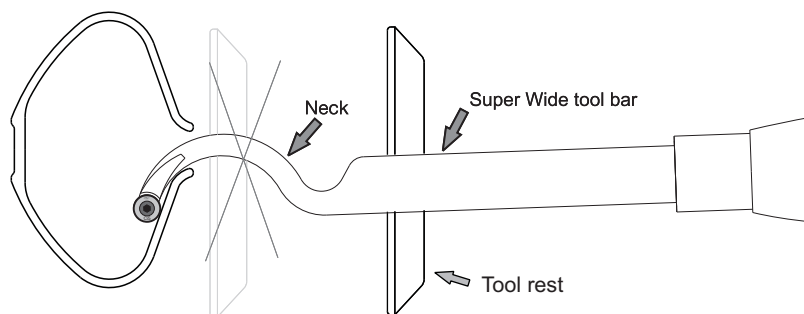
Get to know your new tools by avoiding large and complicated projects. Build your skills by doing a few smaller cross grain projects from fresh cut cherry and make your entry hole large enough to pass the tools through easily (1 1/2"+).

By setting yourself up for success you will definitely have the most fun!

## IMPORTANT - Tool Safety for ALL Hollowers

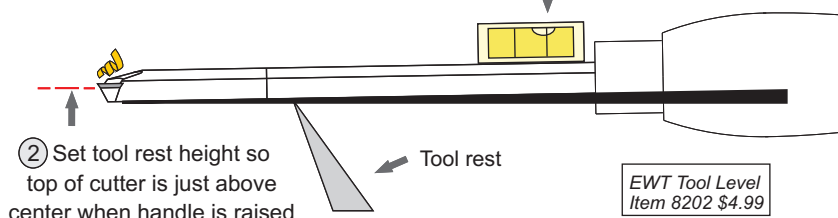
### Tool Rest Zone

Always work with the Super Wide tool bar on the tool rest - never the neck of the tool



### Use with handle slightly raised.

① Maintain bubble on back line by raising handle slightly



EWT Tool Level  
Item 8202 \$4.99