



Owner's Manual

AUKTools Router Table Stand Castor Set

Dear Customer

Thank you for choosing this AUKTools product. We appreciate your support and hope that our product serves you well. This product is designed to provide many years of reliable service provided it is used as intended and taken care of.

This user manual will assist you in the set up and general operation of this product.

Safety Instructions

Please read all instructions and retain for future reference.

Work Area

1. Keep work area clean and well lit. Cluttered, dark work areas invite accidents.
2. Avoid dangerous environments.
3. Do not use your power tool in rain, damp or wet locations or in the presence of explosive atmospheres (gaseous fumes, dust or flammable materials).
4. Remove materials or debris that may be ignited by sparks.
5. Keep bystanders away. Children and bystanders should be kept at a safe distance from the work area to avoid distracting the operator and making contact with the tool or extension cord.
6. Protect others in the work area from debris such as chips and sparks. Provide barriers or shields as needed.
7. Make workshop child proof with padlocks, master switches, and by removing starter keys.

Personal safety

1. Always wear eye protection when operating any power tools or machinery.
2. Always use proper guards and safety devices when operating power tools and machinery.
3. Carefully check router bits before each use. Do not use if damage or defect is suspected.
4. Do not exceed the recommended RPM for any router bit.
5. Do not wear loose clothing or jewellery that may catch on tools, machinery or equipment.
6. Unplug the tool or machine when mounting or making any adjustments to mechanical performance.

Routing Safety Precautions

1. Always make sure the fence on your router table is locked firmly into position before each use.
2. Never force the bit or overload the router beyond the expectations of the tool.
3. Be sure that at least 3/4 of the shank length is inserted securely in the router collet.
4. Never bottom out the bit in the collet. Allow 3mm (1/8") clearance between the bottom of the shank and the bottom of collet.
5. Always rout in two or more passes when large amounts of stock need to be removed.
6. Use reduced RPM speeds for larger diameter router bits.

WARNING

Do not operate router table with castors engaged. Always have the leg levellers on the floor when operating the router table.

Parts List



Part NO.	Description	Quantity
1	Wheel Frame	1
2	Castor Wheels with Brackets	2
3	Support Plate	1
4	Foot Pedal	1
5	Foot Pedal Bracket	1
6	Foot Pedal Base	1
7	Foot Pedal Assembly Bolts	4
8	Castor Wheel	1
9	M6 x 16mm Socket Head Cap Screws (Not Shown)	14
10	6mm Flat Washer (Not Shown)	14
11	Heavy Washer (Not Shown)	1
12	M12 Nylon Lock Nut (Not Shown)	1
13	5mm Hex Key (Not Shown)	1
14	Wrench	1

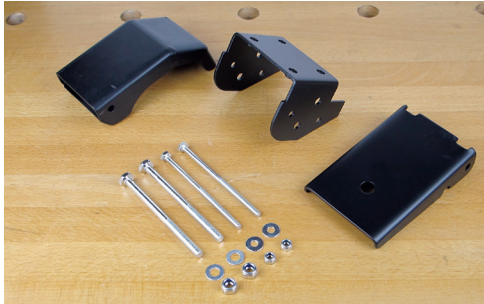
Foot Pedal Assembly

Parts Required

- 1 x Foot Pedal
- 1 x Pedal Bracket
- 1 x Pedal Wheel Base
- 2 x Large Bolt with washer and nylon lock nut
- 2 x Small Bolt with washer and nylon lock nut

Tools Required

Adjustable Wrenches



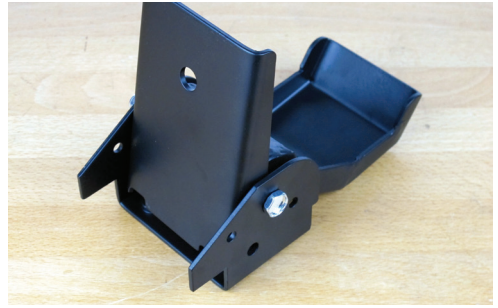
Using one of the large Foot Pedal Assembly Bolts (Part #7) attach the Foot Pedal (Part #4) through the Foot Pedal Bracket (Part #5). Place a large flat washer and nylon lock nut on the bolt and tighten.

Do not fully tighten the bolts as they should be able to spin freely.



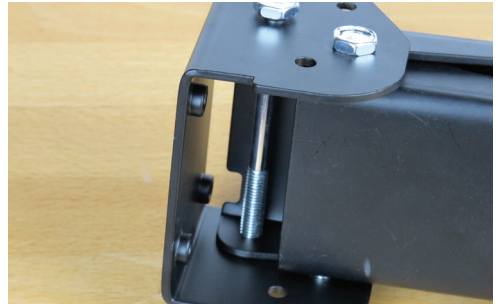
Place the Foot Pedal Base (Part #6) into the pre-assembled Foot Pedal Bracket/Foot Pedal as per image. The grooves in the Foot Pedal Base should sit aligned with the installed bolt.

Ensure that the holes of the Foot Pedal Base are lined up with the remaining larger hole of the Foot Pedal Bracket.



Using the remaining large bolt, washer and nylon locking nut, attach the Foot Pedal Base.

Do not fully tighten the bolts as they should be able to spin freely.



Turning the Foot Pedal Assembly over to show the bottom, place the first of the smaller bolt, washer and nylon locking nut through the dedicated holes.

Do not fully tighten the bolts as they should be able to spin freely.

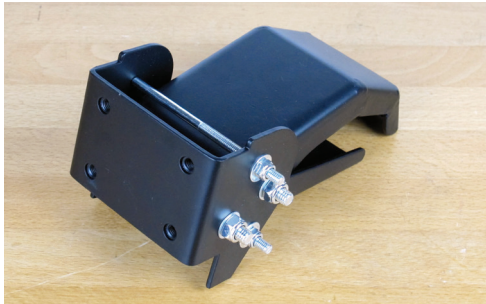


Turning the Foot Pedal Assembly back over to be the correct way up, place the remaining smaller bolt, washer and nylon locking nut through the dedicated holes.

Do not fully tighten the bolts as they should be able to spin freely.

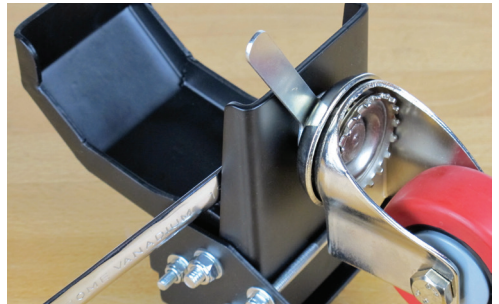
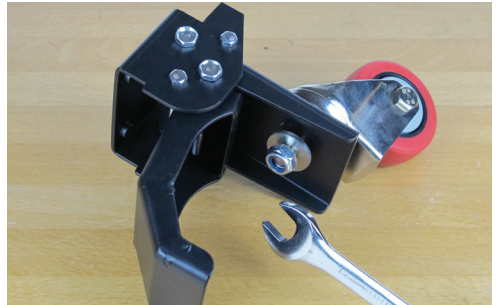
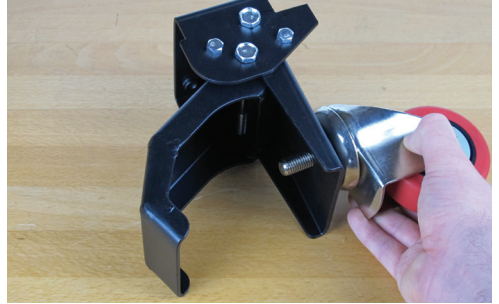


This completes the Foot Pedal Assembly. Please move on to Adding the Castor Wheel to the Foot Pedal section.



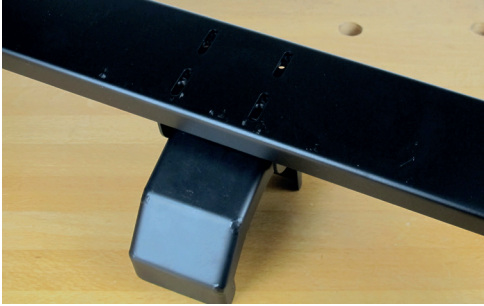
Adding the Castor Wheel to the Foot Pedal

Place the threaded end of the castor wheel through the wheel base using one heavy washer (Part #11) and one M12 Nylon Lock Nut (Part #12) secure the castor wheel base using a 19mm wrench and the skinny wrench provided (Part #14).

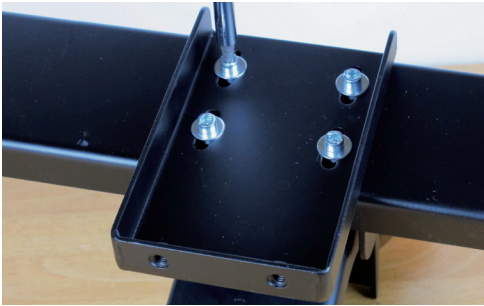


Mounting the Foot Pedal to the Wheel Frame

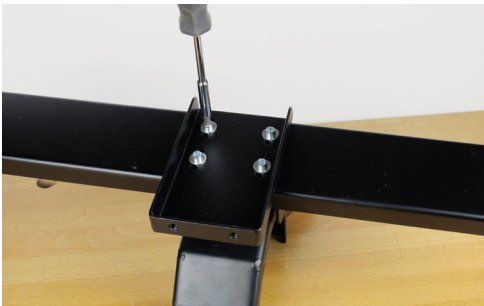
Place the wheel frame (Part #1) over the roller assembly.



Line the holes up on the Support Plate (Part #3) with the holes in the Wheel Frame (Part #1).

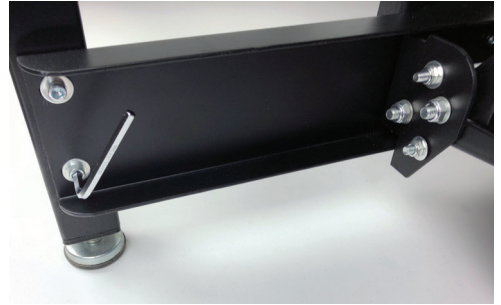


Secure with four M6 x 16mm Socket Head Cap Screws (Part #9) and four 6mm Flat Washers (Part #10). Do not fully tighten up these screws yet.



Mounting the wheel frame and castor wheel with brackets to stand

Line up the wheel frame assembly with the 2 holes on each stand leg. Using four M6 x 16mm Socket Head Cap Screws (Part #9) and four 6mm Flat Washers (Part #10), mount the wheel frame assembly and tighten the screws using the 5mm hex key provided (Part #13).



Once you have the wheel frame assembly mounted to the stand. Raise the support plate and connect it the stand brace using two M6 x 16mm Socket Head Cap Screws (Part #9) and two 6mm Flat Washers (Part #10).

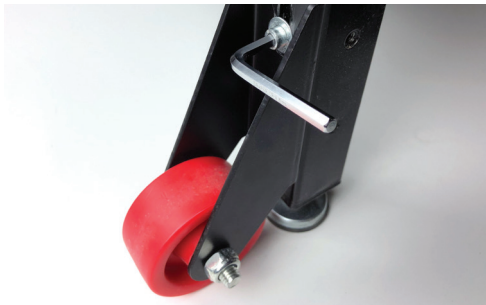


Now that the support plate has been connected to the stand brace, tighten up the four M6 x 16mm Socket Head Cap Screws (Part #9) on the roller wheel assembly.



Line up one of the castor wheel and brackets to the holes on the stand leg. Using two M6 x 16mm Socket Head Cap Screws (Part #9) and two 6mm Flat Washers (Part #10) mount the castor wheel to the stand leg and leave screws loose. These will be tightened at the very end once the stand is levelled.

Repeat one more time mounting the other castor wheel with bracket to the other stand leg.



Once you have your stand levelled, adjust the fixed individual rollers so that they are just touching the ground and tighten the screws.

On the single castor side, you will want to make sure the castor is about 1/16 off the floor when the foot pedal is not engaged. This will allow the stand to move freely when you step on the foot pedal and raise the unit off the ground as shown in the photo below.



You May Also Like...



AUKTools NVR Switch (230v)
AUK-NVRSWITCH

An industrial-quality NVR Switch made exclusively for Wood Workers Workshop to run on a UK and European 230v domestic power supply. Fully wired with a BS three pin plug ready to use with 13 Amp power tools.



AUKTools NVR Backing Plate
AUKNVRBP

Designed so that you can mount your AUKTools NVR Switch to our AUKTools Router Stand. The plate comes with pre-drilled holes set at a distance of 25.4mm for easing mounting onto your router stand.

One Year Limited Warranty

The distributor warrants to the original purchaser that the AUKTools Router Table Stand Castor Set will be free from defects in materials and workmanship under normal use and service for a period of one (1) year from the date of original purchase. The obligation of this Warranty is limited to repair or replacement, at our option, of components which prove defective under normal use.

This warranty is in lieu of all other express warranties obligations or liabilities. ANY IMPLIED WARRANTIES, OBLIGATIONS OR LIABILITIES, SHALL BE LIMITED IN DURATION TO THE ONE YEAR PERIOD OF THIS LIMITED WARRANTY.

This Warranty shall not apply to any product or component which in the opinion of the Distributor has been modified or altered in any way, damaged as a result of an accident, misuse or abuse, or loss of parts.

In no case shall the Distributor be liable for any special or consequential damages, or any other costs or warranty, expressed or implied, whatsoever.

This Warranty gives you specific legal rights, and you may also have other rights which vary by country.



WOOD WORKERS WORKSHOP

Wood Workers Workshop Limited
The Threshing Barn, Welland Road
Upton-upon-Severn, Worcs WR8 0SN

Telephone +44 (0)1684 594 683
sales@woodworkersworkshop.co.uk
www.woodworkersworkshop.co.uk