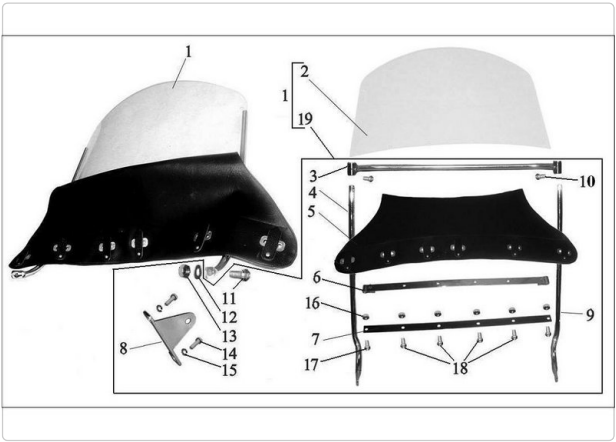


How to Assemble Accessory Sidecar Windshield.



Difficulty

Moderate



Steps

9



Time Required

00:30:00 - 00:45:00



Sections

1




Flags

0

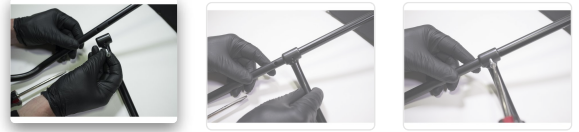


Step 1 Before You Begin



-  Be sure to work on a suitable surface that will prevent marring the finish on metal pieces or scuff/scratching the glazing during assembly.
- Lay out all sidecar windshield assembly pieces, hardware and required tools in preparation for assembly.
 - Arrange the pieces as shown. The cross bar bend will be facing away from you. The lower portion of the left and right legs will be angled up towards you with the slotted area facing in toward the other.

Step 2 Frame Assembly



- Insert the right leg (your left side) and secure loosely with a slotted screw through the threaded hole in the cross bar and into the hole in the right leg located directly below the slotted area.
- Repeat process for the left leg (your right side).

 Add a comment

Step 3 Install Glazing



- From the top, gently slide the glazing into the slotted areas of both left and right legs.
- Grasp the frame and glazing firmly together holding the assembly in proper alignment.
- Tighten the flat head screws on the cross bar.

 Add a comment

Step 4 Install Cross Straps



- Form the inner cross strap with the rounded ends to the curvature of the glazing.
- Fit rounded ends of the inside cross strap over the left and right legs.

 Add a comment

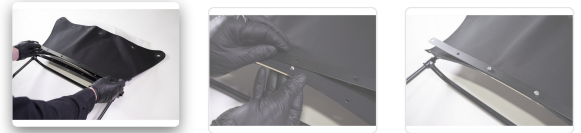
Step 5 Install Apron



- ⚠ Place a non-marring material over the glazing to protect the surface from scuffs during the next steps.
- Place the apron over the glazing and align with the outer cross strap holes.
- ⓘ Be sure the windshield apron is facing the correct way with the inside of the grommets facing up.

 Add a comment

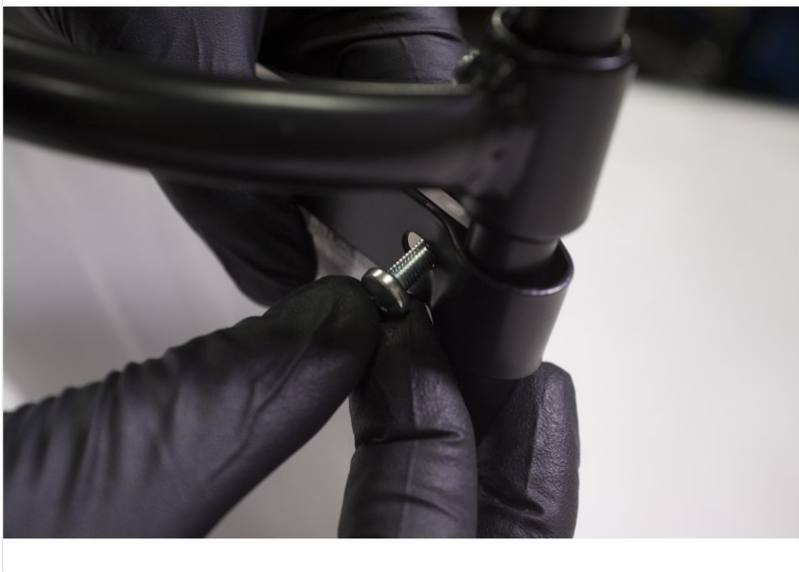
Step 6 Install Hardware



- Place the outside cross strap over the apron but under the inside cross strap ends.
- Align and install the short philips head screws and nylock nuts into the four (4) center holes.

 Add a comment

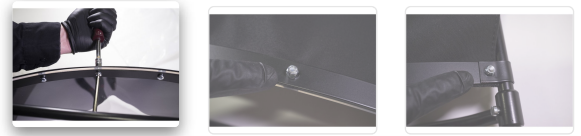
Step 7 Install Hardware Continued



- Use longer Philips head screws and nylock nuts for two (2) outermost holes.
- ① Be sure to bring the inside cross strap ends around the outside of the left and right legs on top of the outside cross strap.

 Add a comment

Step 8 Final Assembly



- Working from the center out, tighten all hardware.
- ⓘ The middle philips head screw threads will be flush with the nylock portion of the nut.
- ⓘ The longer outside philips head screw threads will be slightly above the nylock portion of the nut.
- ⚠ Do not over tighten screws fracturing the glazing's mounting holes and cause permanent damage. Even a minor fracture can increase in size over time completely fracturing the glazing.

💬 Add a comment

Step 9 Finished



- The sidecar windshield assembly is now ready to install.

💬 Add a comment