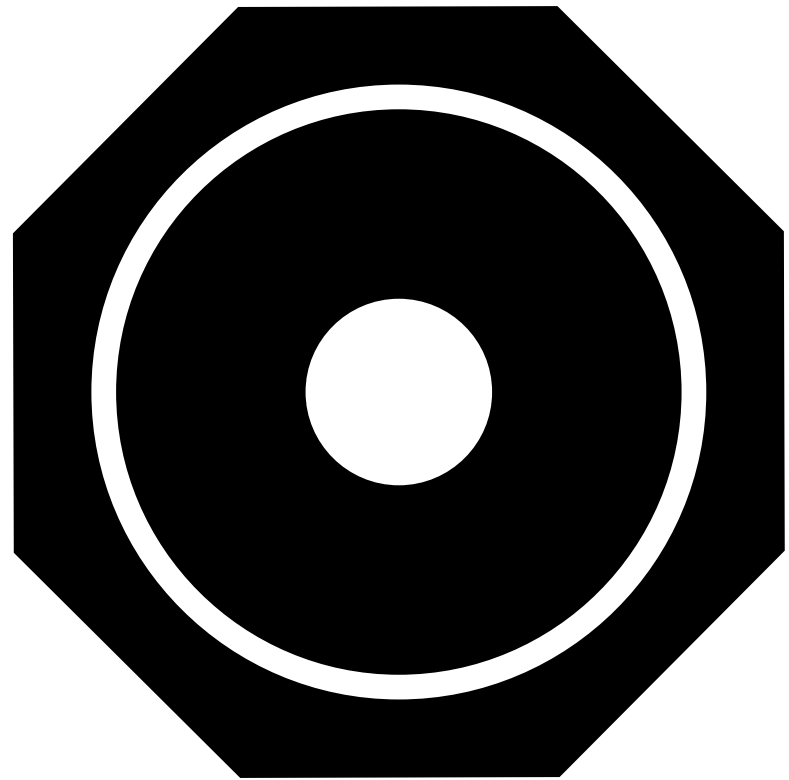




SnapPad[®]

The World's Only Permanent Jack Pad



PRODUCT CATALOG

1-866-923-9538 | info@rvsnappad.com | rvsnappad.com

INTRODUCING THE WORLD'S ONLY PERMANENT JACK PAD

More protection, more stability, less hassle. RV SnapPads are designed to quickly snap on in minutes but provide a lifetime of benefits. Made from recycled rubber tires and carefully engineered to snap on and not come off, SnapPads are like a great looking set of new shoes for your rig.

Discover the 8 Benefits of SnapPads



Permanently Attached



Increased Stability



Advanced Protection



Anti-Slip



Highly Durable



Electrical Insulation



Environmentally Friendly



Curb Appeal



Product Name	Landing Foot Shape & Size	Compatible Leveling System	Found on Pages
SnapPad XTRA	6" Square 9" Round 12" Round	LCI®/ Lippert®	04 - 05
SnapPad HiWay	8" Round 10" Round 11.5" Round	HWH®	06 - 07
SnapPad EQ	7" Square 7.25" Round 8" Square 10" Round 10" Octagon 12" Round	Equalizer Systems® BAL®	08 - 09
SnapPad PRIME	10" Round	Power Gear® Kwikee Level Best®	10 - 11
SnapPad BF	7" Square 7.25" Round 10" Octagon	Bigfoot® BAL®	12 - 13
SnapPad Mini	5.5" Round 5.5" Square 6" Round	Various	14 - 15
SnapPad Rival	8" Round 10" Round	RVA®	16 - 17

**This chart is for general compatibility only. The only way to guarantee compatibility is with a visual inspection and measuring of the leveling system. SnapPad is a compatible accessory for use with leading RV and Motorhome brands which appear on this catalog. All other product and company names are trademarks of their respective owners. The trademark owners are not affiliated with the maker of this product and do not endorse this product.*

For further compatibility information, visit compatibility.rvsnappad.com.

UNDERSTANDING COMPATIBILITY



← Product Name & Letter on Pad

← Leveling System Description

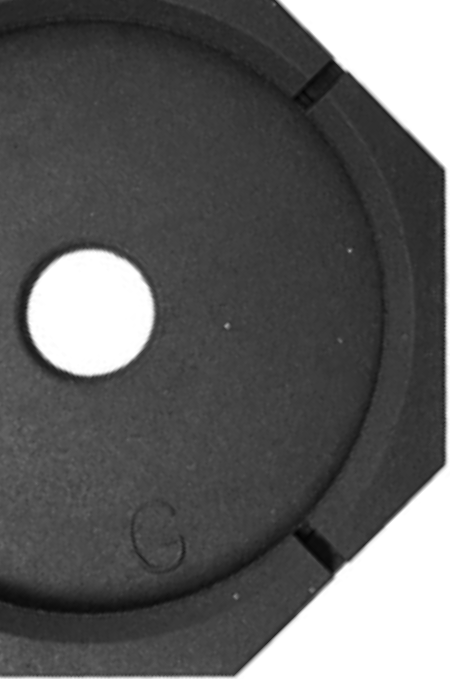
← Landing Foot Visual

← Measurement of Landing Foot

← Compatible SnapPad®

Use these visual guides to find which leveling system and size of landing foot that each SnapPad product applies to. Visit the appendix for full compatibility info.

**SnapPad is a compatible accessory for use with leading RV and Motorhome brands which appear on this catalog. All other product and company names are trademarks of their respective owners. The trademark owners are not affiliated with the maker of this product and do not endorse this product.*



SnapPad XTRA

- Designed to work with LCI® / Lippert® leveling systems & stabilizers.
- For 9" and 12" round leveling feet, as well as 6" square stabilizer jacks.
- Compatible with Fifth Wheels, Class A & C Motorhomes & Travel Trailers.

To find out which rigs SnapPad XTRA is compatible with, **refer to page 19 of the product catalog.**

COMPATIBLE LEVELING SYSTEMS

- LCI® Ultra Level®
- LCI® Level Up®
- LCI® Ground Control® TT + 3.0
- Rieco Titan Speedy®
- E&P Hydraulics®
- LCI® PSx1® & PSx2® Power Stabilizers



PRODUCT SPECS

XTRA:

- For 9" round jack feet
- 11" diameter
- 5 lbs per pad
- Adds 1" of thickness to jack foot
- Adds 61% surface area

XTRA XL:

- For 12" round jack feet
- 13.75" diameter
- 8.4 lbs per pad
- Adds 1" of thickness to jack foot
- Adds 40% surface area

XTRA SQUARE 6:

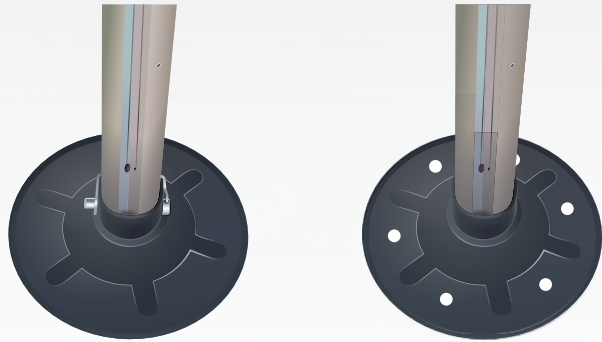
- For 6" square jack feet
- 8.5" diameter
- 2.8 lbs per pad
- Adds 1" of thickness to jack foot
- Adds 79% surface area



COMPATIBLE LEVELING SYSTEMS

XTRA (G)

For 9" round LCI/Lippert®
Level Up® or Ground Control®



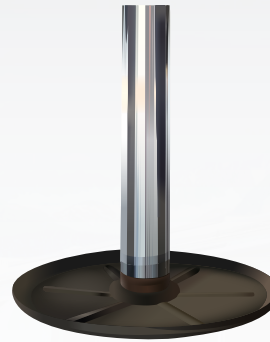
9"

9"



XTRA XL (F)

For 12" round LCI/Lippert®
Ultra Level Up®



12"



XTRA Square 6 (M)

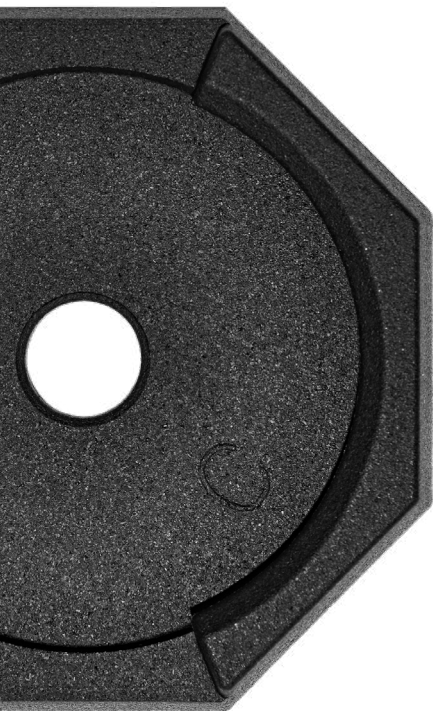
For 6" square LCI/Lippert®
PSx1® & PSx2® Power Stabilizers



6"



**SnapPad is a compatible accessory for use with leading RV and Motorhome brands which appear on this catalog. All other product and company names are trademarks of their respective owners. The trademark owners are not affiliated with the maker of this product and do not endorse this product.*



SnapPad HiWay

- Designed to work with HWH® & Atwood leveling systems.
- For 8", 10" & 11.5" round leveling feet.
- Compatible with Class A, B & C Motorhomes.

To find out which rigs SnapPad HiWay is compatible with, refer to page 19 of the product catalog.

COMPATIBLE LEVELING SYSTEMS

- HWH®
- Atwood®

PRODUCT SPECS

HiWay 8:

- For 8" round jack feet
- 10" diameter
- 3.8 lbs per pad
- Adds 1" of thickness to jack foot
- Adds 69% surface area

HiWay 10:

- For 10" round jack feet
- 11.75" diameter
- 5.6 lbs per pad
- Adds 1" of thickness to jack foot
- Adds 48% surface area

HiWay Bus:

- For 11.5" round jack feet
- 13.75" diameter
- 8.4 lbs per pad
- Adds 1" of thickness to jack foot
- Adds 53% surface area

COMPATIBLE LEVELING SYSTEMS

HiWay 8 (C)

For 8" round HWH®



8"

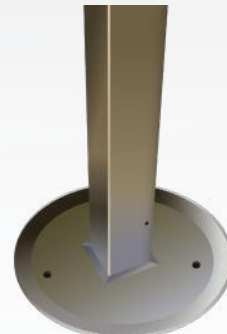


HiWay 10 (E)

For 10" round HWH®
or Atwood®



10"



10"



HiWay Bus (F)

For 11.5" round HWH®



11.5"



**SnapPad is a compatible accessory for use with leading RV and Motorhome brands which appear on this catalog. All other product and company names are trademarks of their respective owners. The trademark owners are not affiliated with the maker of this product and do not endorse this product.*



SnapPad EQ

- Designed to work with Equalizer® leveling systems & BAL® stabilizers.
- For 10" round and octagon, as well as 7" and 8" square leveling feet.
- Compatible with Fifth Wheels and Class A & C Motorhomes.

To find out which rigs SnapPad EQ is compatible with, refer to **page 20 of the product catalog**.

COMPATIBLE LEVELING SYSTEMS

- Equalizer Systems®
- BAL® Stabilizers

PRODUCT SPECS

EQ Round:

- For 10" round jack feet
- 11.75" diameter
- 5.6 lbs per pad
- Adds 1" of thickness to jack foot
- Adds 48% surface area

EQ Compact:

- For 7" square or 7.25" round jack feet
- 9" diameter
- 3 lbs per pad
- Adds 1" of thickness to jack foot
- Adds 44% surface area

EQ Grand:

- For 12" round jack feet
- 13.75" diameter
- 8.4 lbs per pad
- Adds 1" of thickness to jack foot
- Adds 53% surface area

EQ Octagon:

- For 10" octagon jack feet
- 13.25" diameter
- 8.9 lbs per pad
- Adds 1" of thickness to jack foot
- Adds 79% surface area

EQ Stable:

- For 8" square jack feet
- 11.5" diameter
- 5.4 lbs per pad
- Adds 1" of thickness to jack foot
- Adds 66% surface area



COMPATIBLE LEVELING SYSTEMS

EQ Round (E)

For 10" round
Equalizer Systems®



10"



EQ Octagon (B)

For 10" octagon
Equalizer Systems®



10"



EQ Grand (F)

For 12" round
Equalizer Systems®



12"

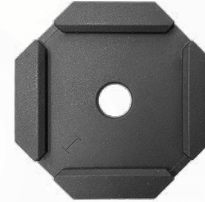


EQ Stable (I)

For 8" square
Equalizer Systems®

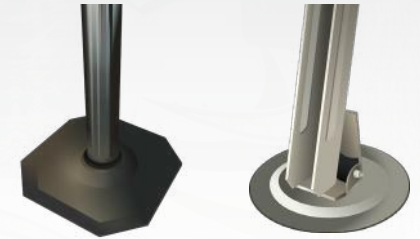


8"



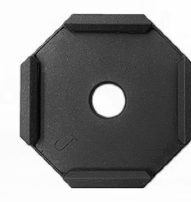
EQ Compact (J)

For 7" square
Equalizer Systems® or round BAL®

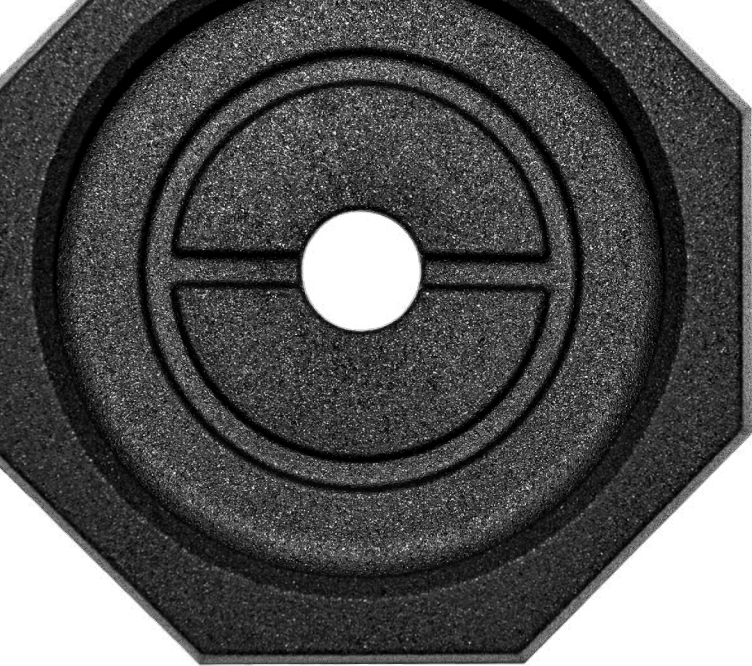


7"

7.25"



**SnapPad is a compatible accessory for use with leading RV and Motorhome brands which appear on this catalog. All other product and company names are trademarks of their respective owners. The trademark owners are not affiliated with the maker of this product and do not endorse this product.*



SnapPad PRIME

PRODUCT SPECS

- Designed to work with Power Gear® & Kwikie Level Best leveling systems.
- For 10" round leveling feet.
- Compatible with Class A Motorhomes and some Class C's.
- For 10" round jack feet
- 13.25" diameter
- 8.9 lbs per pad
- Adds 1" of thickness to jack foot
- Adds 316% surface area

To find out which rigs SnapPad PRIME is compatible with, **refer to page 19 of the product catalog.**

COMPATIBLE LEVELING SYSTEMS

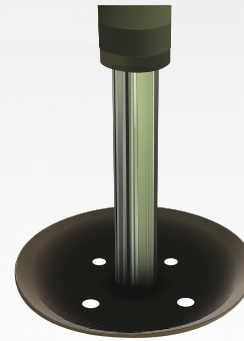
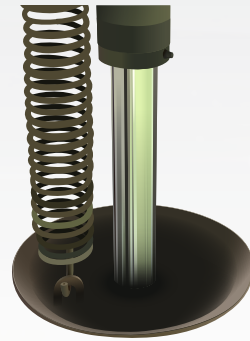
- Power Gear®
- Kwikie® Level Best



COMPATIBLE LEVELING SYSTEMS

PRIME (B)

For 10" round Power Gear®
or Kwikkee Level Best®



10"

10"



**SnapPad is a compatible accessory for use with leading RV and Motorhome brands which appear on this catalog. All other product and company names are trademarks of their respective owners. The trademark owners are not affiliated with the maker of this product and do not endorse this product.*



SnapPad BF

- Designed to work with Bigfoot® leveling systems & BAL® stabilizers.
- For 7” square and 10” octagon landing feet, as well as 7.25” round stabilizer jacks.
- Compatible with Fifth Wheels and a variety of Motorhome types.

To find out which rigs SnapPad BF are compatible with, **refer to page 20 of the product catalog.**

COMPATIBLE LEVELING SYSTEMS

- Bigfoot® Hydraulic Leveling Systems
- BAL® Stabilizers

PRODUCT SPECS

BF 7:

- For 7” square or 7.25” round jack feet
- 9” diameter
- 3 lbs per pad
- Adds 1” of thickness to jack foot
- Adds 44% surface area

BF 10:

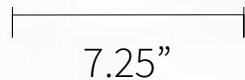
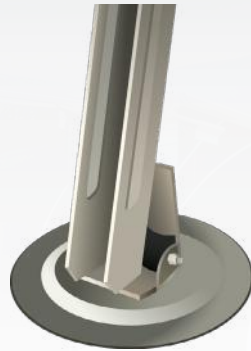
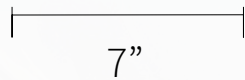
- For 10” octagon jack feet
- 13.25” diameter
- 8.9 lbs per pad
- Adds 1” of thickness to jack foot
- Adds 97% surface area



COMPATIBLE LEVELING SYSTEMS

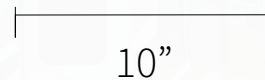
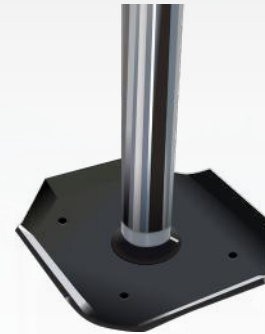
BF 7 (J)

For 7" square Bigfoot Hydraulic Levelers®
or round BAL®



BF 10 (B)

For 10" octagon
Bigfoot Hydraulic Levelers®



**SnapPad is a compatible accessory for use with leading RV and Motorhome brands which appear on this catalog. All other product and company names are trademarks of their respective owners. The trademark owners are not affiliated with the maker of this product and do not endorse this product.*

SnapPad Mini

- Designed to work with a variety of leveling systems.
- For 5.5" square & round, and 6" round leveling feet.
- Compatible with Travel Trailers, Truck Campers, and some Class B Motorhomes.

To find out which rigs SnapPad Mini are compatible with, **refer to page 21 of the product catalog.**



COMPATIBLE LEVELING SYSTEMS

- Bigfoot® Hydraulic Leveling Systems
- BAL® Stabilizers
- UltraFab® Electric A-Frame Jacks
- Stromberg Carlson® Electric Jacks
- LCI® Tongue Jack
- Husky®
- Atwood®

PRODUCT SPECS

Mini 5.5:

- For 5.5" round jack feet
- 7.25" diameter
- 2 lbs per pad
- Adds 1" of thickness to jack foot
- Adds 99% surface area

Mini 6:

- For 6" round jack feet
- 7.75" diameter
- 2.2 lbs per pad
- Adds 1" of thickness to jack foot
- Adds 88% surface area

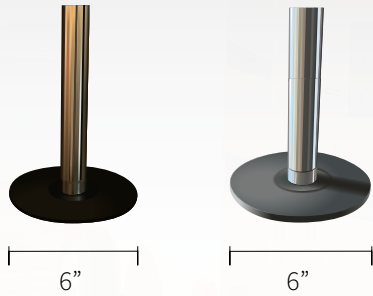
Mini Square 5:

- For 5.5" square jack feet
- 8.15" diameter
- 2.6 lbs per pad
- Adds 1" of thickness to jack foot
- Adds 79% surface area

COMPATIBLE LEVELING SYSTEMS

Mini 6 (K)

For 6" round stabilizers and tongue jacks



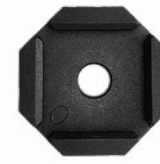
Mini 5.5 (L)

For 5.5" round stabilizers and tongue jacks



Mini Square 5 (O)

For 5.5" square BAL® stabilizers



**SnapPad is a compatible accessory for use with leading RV and Motorhome brands which appear on this catalog. All other product and company names are trademarks of their respective owners. The trademark owners are not affiliated with the maker of this product and do not endorse this product.*

SnapPad Rival

- Designed to work with RVA® leveling systems.
- For 8” and 10” round leveling feet.
- Compatible with Class A Motorhomes.

To find out which rigs SnapPad Rival are compatible with, **refer to page 21 of the product catalog.**

COMPATIBLE LEVELING SYSTEMS

- RVA®

PRODUCT SPECS

Rival 8:

- For 8” round jack feet
- 10” diameter
- 3.4 lbs per pad
- Adds 1” of thickness to jack foot
- Adds 69% surface area

Rival 10:

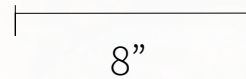
- For 10” flat, round jack feet
- 11.75” diameter
- 5.6 lbs per pad
- Adds 1” of thickness to jack foot
- Adds 48% surface area



COMPATIBLE LEVELING SYSTEMS

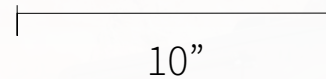
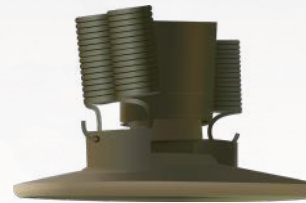
Rival 8 (N)

For 8" round RVA®



Rival 10 (E)

For 10" round, flat RVA®



**SnapPad is a compatible accessory for use with leading RV and Motorhome brands which appear on this catalog. All other product and company names are trademarks of their respective owners. The trademark owners are not affiliated with the maker of this product and do not endorse this product.*



RESOURCES

HELPFUL LINKS:

Dealer Resource Center:

resources.rvsnappad.com

Customer Warranty Info:

rvsnappad.com/pages/general-warranty

Full Compatibility Info:

compatibility.rvsnappad.com

CONTACTS:

Rob Crist, Chief Sales Officer

Phone: 1-866-923-9538

Email: rob@rvsnappad.com

Devon Wilson, Chief Operating Officer

Phone: 1-866-923-9538

Email: devon@rvsnappad.com

Taylor Luhtala, Sales & Logistics

Phone: 1-866-923-9538

Email: taylor@rvsnappad.com

A P P E N D I X

RV SnapPad XTRA Compatible Rigs

For RV's with LCI® leveling systems.

Please Note: The only way to be **100% certain** of compatibility is to visually inspect and measure the leveling system. This list does not include all compatible RV brands for SnapPad XTRA.

- Coachmen Fifth Wheels
- Crossroads Fifth Wheels
- Damon Class A Motorhomes
- DRV Fifth Wheels
- Dutchmen Travel Trailers & Fifth Wheels

- Entegra Class A Motorhomes
- Forest River Fifth Wheels & Class A Motorhomes
- Grand Design Fifth Wheels
- Heartland Fifth Wheels
- Highland Ridge Fifth Wheels
- Holiday Rambler Class A Motorhomes
- Jayco Class A, C Motorhomes & Fifth Wheels
- Keystone Fifth Wheels
- KZ Fifth Wheels
- Northwood Fifth Wheels
- Prime Time Fifth Wheels
- Thor Class A Motorhome
- Vanleigh Fifth Wheels
- Winnebago Class A Motorhomes

FRONT FEET DIAMETER	BACK FEET DIAMETER	MIDDLE FEET DIAMETER	PACK REQUIRED
9" Round	9" Round	9" Round	XTRA - 6 Pack XTRSP6
9" Round	9" Round	N/A	XTRA - 4 Pack XTRSP4
9" Round	12" Round	N/A	XTRA XL Plus - 4 Pack XTR12SP4
12" Round	12" Round	N/A	XTRA XL - 4 Pack XTRL12SP4
6" Square	6" Square	N/A	XTRA Square 6 - 4 Pack XTRSQSP4

RV SnapPad PRIME Compatible Rigs

For RV's with Power Gear® & Kwikie Level Best® leveling systems.

Please Note: The only way to be **100% certain** of compatibility is to visually inspect and measure the leveling system. This list does not include all compatible

RV brands for SnapPad PRIME.

- American Coach Class A Motorhomes
- Dynamax Class C Motorhomes
- Fleetwood Class A Motorhomes
- Holiday Rambler Class A Motorhomes
- Jayco Class A Motorhomes
- Monaco Class A Motorhomes
- National Class A Motorhomes

FRONT FEET DIAMETER	BACK FEET DIAMETER	MIDDLE FEET DIAMETER	PACK & PRODUCT NUMBER
10" Round	10" Round	N/A	PRIME - 4 Pack PRSP4
10" Round	10" Round	N/A	PRIME - 3 Pack PRSP3

RV SnapPad HiWay Compatible Rigs

For RV's with HWH® leveling systems.

Please Note: The only way to be **100% certain** of compatibility is to visually inspect and measure the leveling system. This list does not include all compatible RV brands for SnapPad HiWay..

- Newmar Class A Motorhomes
- Tiffin Class A Motorhomes
- Winnebago Class A, C Motorhomes

FRONT FEET DIAMETER	BACK FEET DIAMETER	MIDDLE FEET DIAMETER	PACK & PRODUCT NUMBER
8" Round	8" Round	N/A	HiWay 8 - 4 Pack HI8SP4
10" Round	10" Round	N/A	HiWay 10 - 4 Pack HI10SP4
8" Round	10" Round	N/A	HiWay Plus - 4 Pack HIPLSP4
11.5" Round	11.5" Round	N/A	HiWay Bus - 4 Pack HI12BSP4
8" Round	11.5" Round	N/A	HiWay 8 Bus - 4 Pack HI8BSP4
10" Round	11.5" Round	N/A	HiWay 10 Bus - 4 Pack HI10BSP4

A P P E N D I X

RV SnapPad EQ Compatible Rigs

For RV's with Equalizer® and BAL® leveling systems.

*Please Note: The only way to be **100% certain** of compatibility is to visually inspect and measure the leveling system. This list does not include all compatible RV brands for SnapPad EQ.*

- Luxe Fifth Wheels
- Dynamax Class C Motorhomes
- Entegra Class A Motorhomes
- Forest River Class A Motorhomes
- Jayco Class C Motorhomes & Fifth Wheels
- Newmar Class A Motorhomes
- Nexus Class C Motorhomes
- Renegade Class C Motorhomes
- Keystone Fifth Wheels

FRONT FEET DIAMETER	BACK FEET DIAMETER	MIDDLE FEET DIAMETER	PACK & PRODUCT NUMBER
7" Square / 7.25" Round	7" Square / 7.25" Round	N/A	EQ Compact - 4 Pack EQ7SP4
10" Round	10" Round	N/A	EQ Round - 4 Pack EQ0SP4
10" Octagon	10" Octagon	N/A	EQ Octagon - 4 Pack EQ8SP4
10" Round	10" Octagon	N/A	EQ Plus - 4 Pack EQPLSP4
12" Round	12" Round	N/A	EQ Grand - 4 Pack EQ12PS4
12" Round	10" Octagon	10" Octagon	EQ Grand Lux - 6 Pack EQLXSP6
10" Octagon	12" Round	N/A	EQ Grand Octagon - 4 Pack EQ812SP4
8" Square	8" Square	N/A	EQ Stable - 4 Pack EQSTSP4

RV SnapPad BF Compatible Rigs

For RV's with Bigfoot® or BAL® leveling systems.

*Please Note: The only way to be **100% certain** of compatibility is to visually inspect and measure the leveling system. This list does not include all compatible RV brands for SnapPad BF.*

- Coachmen Class C Motorhomes
- Forest River Class C Motorhomes
- Carriage Fifth Wheels
- Evergreen RV Fifth Wheels
- Georgie Boy Class C Motorhomes
- Gulf Stream Class C Motorhomes
- Jayco Class C Motorhomes
- New Horizons Fifth Wheels
- Airstream Travel Trailers

FRONT FEET DIAMETER	BACK FEET DIAMETER	MIDDLE FEET DIAMETER	PACK & PRODUCT NUMBER
7" Square	7" Square	N/A	BF 7 - 4 Pack BF7SP4
7.25" Round	7.25" Round	N/A	BF 7 - 4 Pack BF7SP4
10" Octagon	10" Octagon	N/A	BF 10 - 4 Pack BF10SP4

A P P E N D I X

RV SnapPad Mini Compatible Rigs

For RV's with multiple different types of leveling systems.

*Please Note: The only way to be **100% certain** of compatibility is to visually inspect and measure the leveling system. This list does not include all compatible RV brands for SnapPad Mini.*

- Arctic Fox Truck Campers
- Lance Truck Campers
- Airstream Travel Trailers
- Forest River Class C Motorhomes
- Tiffin Class C Motorhomes
- Braxton Creek Travel Trailers
- Coachmen Class C Motorhomes, Travel Trailers
- Entegra Class C Motorhomes
- inTech RV Travel Trailers
- Jayco Class C Motorhomes
- NuCamp Travel Trailers
- Oliver Class C Motorhomes, Travel Trailers
- Winnebago Travel Trailers

FRONT FEET DIAMETER	BACK FEET DIAMETER	MIDDLE FEET DIAMETER	PACK & PRODUCT NUMBER
5.5" Round	5.5" Round	N/A	Mini 5.5 - 4 Pack MN5SP4
5.5" Square	5.5" Square	N/A	Mini Square 5 - 4 Pack BL5SP4
6" Round	6" Round	N/A	Mini 6 - 4 Pack MN6SP4

RV SnapPad Rival Compatible Rigs

For RV's with RVA® leveling systems.

*Please Note: The only way to be **100% certain** of compatibility is to visually inspect and measure the leveling system. This list does not include all compatible RV brands for SnapPad Rival.*

- Monaco Class A Motorhomes
- Safari Class A Motorhomes
- Beaver Class A Motorhomes
- Holiday Rambler Class A Motorhomes

FRONT FEET DIAMETER	BACK FEET DIAMETER	MIDDLE FEET DIAMETER	PACK & PRODUCT NUMBER
8" Round	8" Round	N/A	Rival 8 - 3 Pack RV8SP3
10" Round	10" Round	N/A	Rival 10 - 3 Pack RV10SP3



VERIFIED CUSTOMER REVIEWS



SnapPads Are A Must

"I love the added stability that the SnapPads offer. I've seen RV's actually slide on concrete when leveling without using these. The added grip that they provide gives me comfort in knowing that my rig is secure. I love using them on dirt, sand and gravel as well. I would never be without my SnapPads!"



Unbelievable

"We just got back from 6000 miles and every stop I was asked by someone what was on my trailer. Most wanted to buy some right away when they saw how easy it was to just lower the levelers and not mess with blocks. I would not live without them ever again."



BEST THING SINCE USED TIRES!!

"These SnapPads are amazing! Not only is my rig easier to level but the stability while we are parked is hard to believe. For years we have had to tweak the leveling system, lift the front, raise the passenger side etc.... Now we just hit the auto-level and we are done! Doesn't matter if we are on concrete, asphalt or gravel."



Love Love Love SnapPads

"They were so easy to install, took seconds. We are very pleased so far. We have used them on cement, gravel and grass without any issues. We would definitely recommend them!"



Snapping Easy

"They were VERY easy to install. We pull into our spot and don't have to worry about placing the level pads under the mid jacks. We run our auto level and we're all good."



Must Have SnapPads

"We had used the plastic stackers, wood, square rubber pads, and threw them all away! This is all you need and SnapPads are the only shoes our jack feet will ever wear!"



PRODUCT CATALOG

1-866-923-9538 | info@rvsnappad.com | rvsnappad.com

*SnapPad is a compatible accessory for use with leading RV and Motorhome brands which appear on this catalog. All other product and company names are trademarks of their respective owners. The trademark owners are not affiliated with the maker of this product and do not endorse this product.

