



## **RV SNAPPAD**

EQ PLUS INSTALLATION INSTRUCTIONS



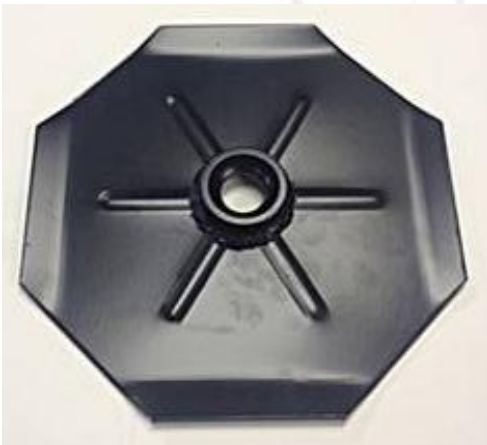
# SnapPad EQ Plus Installation Instructions

**Congratulations on joining the SnapPad family!**

**Very Important Notes:**

It is critical that you install the correct SnapPad on the proper foot. Please triple check prior to installing your SnapPads. Permanent damage could result from trying to install on the wrong landing foot, resulting in your warranty being voided. Your EQ Plus pads are designed to work with 10" round jack feet and 10" octagonal jack feet that are commonly found on Equalizer™\* leveling systems, but you must install the proper SnapPad on the appropriate shaped landing foot.

The SnapPad for the 10" round foot, is designed with two drainage channels on the lip:



The SnapPad designed for the 10" octagonal foot is designed with an internal drainage channel:



\*Trademark is owned by mark owner. SnapPad and its goods are not affiliated with or endorsed by the mark owner.



# Motorhome Detailed Installation Instructions

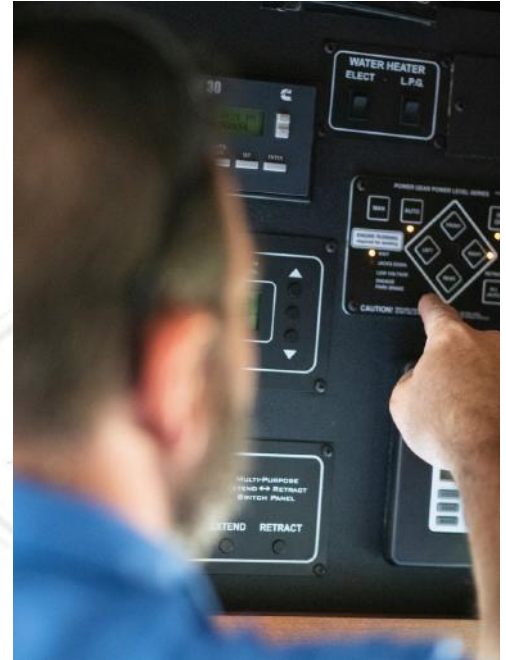
## Installation time: 3 - 6 minutes per pad

- SnapPad installation is best performed on a level or near level surface – preferably a hard surface (concrete or asphalt). Wheel chocks can be placed in front of and behind the RV wheels for additional safety.
- Be sure to thoroughly clean and dry your landing feet prior to installing your SnapPads.
- Spread a small bead of concentrated dish soap around the lip of the SnapPad and metal landing foot to aid installation. **Do NOT use any petroleum based lubricant, such as WD-40®, as it may negatively react with the binder in your SnapPads.**
- Most motorhomes will release their airbags prior to engaging the jacks. This will lower the entire RV at the beginning of the leveling process. You may place your first SnapPad prior to this, however, be careful to **not get caught underneath your RV during the lowering process!**
- Typically, one side will level first. Take note which side that is and start there. Install one SnapPad at a time and/or use the manual jack operation if possible. Refer to your owners manual for instructions.
- Most jacks are 18” - 24” under your RV. Use a tool such as a broomstick to align/adjust your SnapPads, if necessary.
- Once aligned, begin lowering your jack. Keep an eye on the landing foot as it extends. Stop extending when the foot is about 2 to 3 inches from the SnapPad. Double check to make sure it is centered and (if necessary) your bracket slots are lined up with the spring brackets or cross beam. Re-align as needed and then continue extending the landing gear to complete installation. **KEEP YOUR FINGERS AND ANY FOREIGN OBJECTS CLEAR WHEN LOWERING THE JACK INTO PLACE.**
- You should hear a distinctive “snap” as the lip engages. Visually confirm the lip is fully engaged around the perimeter of the landing foot.
- If your lip hasn’t fully engaged, raise your jack and place a shim (small piece of wood no thicker than 1/4”) under the side that hasn’t engaged. Lower your jack again until that side snaps into place.
- Wipe off any excess soap and repeat the installation process, in sequence, on your remaining jacks.



## SnapPad EQ Plus Bus Info & Statistics

- Dimensions of the pad for the round feet: 11.85" wide x 12" long x 2" thick. Dimensions of the pad for the octagonal foot: 13.125" long x 13.125" wide x 2.75" tall.
- Once installed they add an extra 1.125" to your jack thickness.
- The pads for the round feet weigh 5.8 pounds per pad, the pads for the octagonal feet weigh 8.3 pounds per pad.
- You're helping our environment! SnapPads are made from American recycled tires. That means SnapPads are not only durable and versatile but environmentally friendly too.
- Will work on any type of surface, level or uneven, including: asphalt, concrete, grass, gravel, mud, sand, resin, ice, and snow.
- Scientifically tested to maintain integrity at over 120°F down to -40°F and remain attached at over 50x the force of gravity.
- Generally, it takes over 1,300 pounds of vertical pressure to install your SnapPads. This ensures no matter how far off the beaten path you venture, your SnapPads will be there with you.
- Proudly made in the USA



While not required, we recommend double protecting your jacks by covering the landing feet with a rubberized protectant such as Flex Seal®. Make sure to cover your jack cylinders prior to applying and coat the bottom of your landing feet as well. Do this prior to installing your SnapPads and allow the protectant to cure for 24 hours. Do not spray your SnapPads with the sealant (it will not adhere to the rubber).

## Helpful Hints & Tricks for EQ Plus

- It's best (and easiest) to install your SnapPads is one at a time on a level, hard surface.
- Each leveling system will have its own manual operation function. Please refer to your owners manual for specific directions.
- Grab a helper! It's safer, faster, and more efficient with two people.
- Use your phone or another person to relay the information between the installer and the person working the controls.
- Install each SnapPad individually and visually confirm the reinforced lip has engaged on the complete diameter. It is critical your SnapPad has been installed fully and correctly.
- Standing water? No problem! Your SnapPad EQ Plus pads have a built-in drainage channel in the middle.
- Your SnapPads come with a handy bolt-access hole in the center. You can use this to remove the jack with the SnapPad still attached if needed.
- Installation is easier in warm weather (50°F or more).



## Warranty Information

Origen RV Accessories LTD offers a 2-year manufacturer's warranty on both performance and defects in material and workmanship. Should your product fail within a 2-year time frame, Origen RV Accessories LTD will replace your pad free of charge.

### Conditions

- You must register your product warranty first in order to be able to file a claim later on, if necessary. For more information, visit <https://rvsnappad.com/pages/general-warranty>.
- Origen RV Accessories LTD will replace any defective products within the acceptable 2-year window, starting from the purchase date.
- Contact customer service via email or phone and provide an emailed picture of product defect.
- Explanation/reason for the return must be documented in order to receive your refund.
- Should you have accidentally ordered the wrong version, ship them back for a full refund.
- Confirmation that defect is not from repeated installation or misuse in any way.
- Product must be shipped back to Origen RV Accessories LTD manufacturing facility at owners cost, **meaning you pay the shipping charges**. See address below.

**Attn: Penny Holderman - 605 S Laurel St, Mishawaka, IN 46544, USA**

## EQ Plus Disclaimers

- SnapPads are an aftermarket RV accessory, and as such, it is the responsibility of the RV owner to ensure they are an appropriate and safe addition to their RV.
- Each RV has unique design considerations. It is the responsibility of the RV owner to confirm their SnapPads have adequate clearance for any moving parts and will not hinder the functionality of any other system.
- Origen RV Accessories LTD shall not be liable for any special, incidental, indirect or consequential damages whatsoever (including but not limited to, labor, installation, charges, damage to associated equipment, RV, trailer, towing or following vehicle) arising from the use or inability to use or install the product.
- Use **extreme caution** when installing and using SnapPad. Origen RV Accessories LTD is not responsible or liable in any way for any indirect or direct injury sustained during installation or future use of the product.
- Installing SnapPad products on non-compatible leveling systems will result in the voiding of the warranty and can lead to product failure, property damage, or injury. Origen is not responsible for any issues arising from the use of our products on non-compatible systems.
- SnapPads are designed to be installed once. Do not remove and re-install as this will also void your warranty.