

Crate Dolly

Assembly Instructions for Model Number 45

800-428-8560
midwesthomes4pets.com
P.O. Box 1031
Muncie, Indiana 47308



IMPORTANT INFORMATION

Unwrap and remove all parts from the box. Keep the box and packing material until the product is assembled. In case of return or exchange, failure to return product in similar condition as received could result in limited reimbursement. Please save sales receipt as proof of purchase for warranty purposes. Check to ensure you have all the parts below. If you discover any parts are missing, immediately call our toll-free service helpline at 1-800-428-8560 (Monday - Friday 9 a.m. to 4 p.m. EST) or at info@midwesthomes4pets.com.

PARTS IDENTIFICATION

(1) Tubular Frame	(16) Nuts (M8 x 8mm)	(1) Handle
(2) Stationary (non-swivel) Casters	(16) Lock Washers (Dia 8.1 x 2mm)	(1) Handle Rest
(2) Swivel Casters	(16) Screws (M8 x 16mm)	(1) Handle Hook
		(1) Phillips Head Tool

ASSEMBLY INSTRUCTIONS

1. Separate all parts. Lay the Tubular Frame so that the crate stops (see *Illustration A*) are facing down.
2. Locate the front of the Dolly (front has rope handle.) Take one of the Swivel Casters and align the holes of the caster plate with those of the mounting plate on the Dolly.
3. Starting with the mounting plate, put a Screw through the aligned holes. Place Lock Washer on the Screw and tighten the Nut onto the Screw, using the Phillips Head Tool. (see *Illustration B*) Repeat with remaining 3 holes.
4. Locate one of the Stationary Casters and attach it to the mounting plate directly behind the Swivel Caster. Fasten it as in Step 3.
5. Locate the remaining Swivel Caster and the Handle Hook. Attach the Handle Hook and the Caster in the order shown. Fasten as in Step 3. (Make sure the Handle Hook is straight and facing outward.)
6. Locate the remaining Stationary Caster and the Handle Rest. Attach the Handle Rest and the Caster in the order shown. Fasten as in Step 3. (Make sure the Handle Rest is straight and facing outward.)
7. Be sure all nuts are tight, then turn Dolly over so the casters are on the ground.

Illustration A

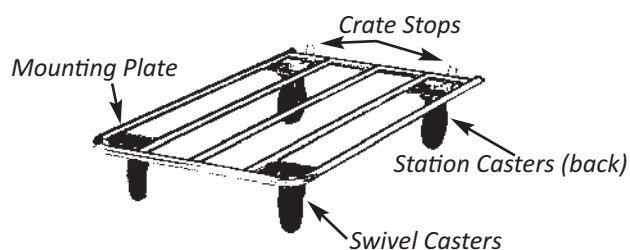
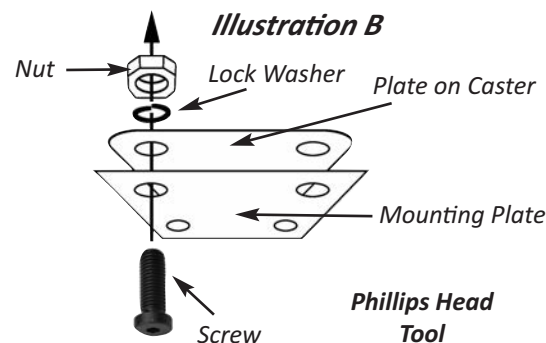
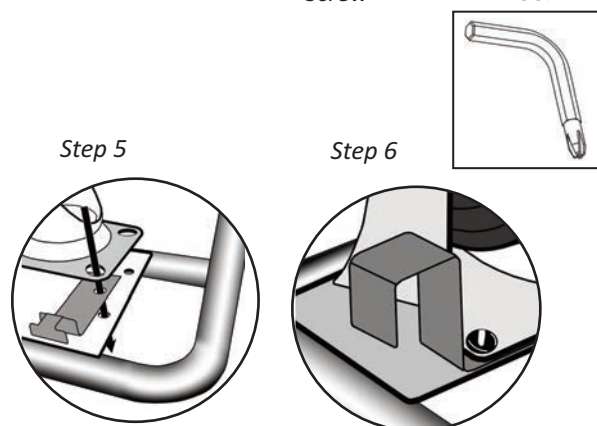


Illustration B



Phillips Head Tool



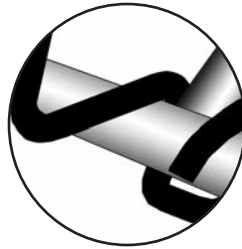
Continue for Handle Attachment →

ATTACHING HANDLE

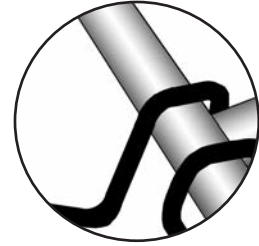
8. Put the end of the Handle under the middle tube of the Dolly.



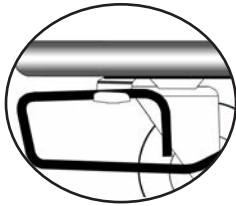
9. Tilt the Handle toward the back of the Dolly so the end wire clears the tube.



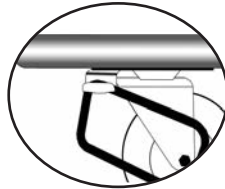
10. Tip the handle forward to lock it into place.



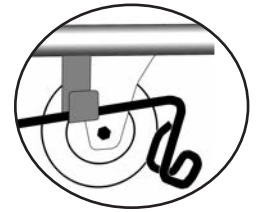
11. To store the Handle, rest the hand-grip into the Handle Hook on the front of the Dolly, as shown.



12. Let the corner slip into the grooves of the Hook.



13. Lift the opposite end of the Handle over the Handle Rest and set it in place.



LIMITED MANUFACTURERS WARRANTY

- For one (1) year from the date of original purchase, MIDWEST Homes For Pets (“MIDWEST”) warrants to the purchaser of this Critter Nation that, should it prove defective by reason of improper workmanship and/or material, MIDWEST will repair or replace, at its option, any defective part of the Critter Nation, without charge for the part or for shipping. Replacement parts are warranted for the remainder of the original period.
- THIS WARRANTY DOES NOT COVER** defects in the furniture caused by any animal, any physical abuse to or misuse of the pet furniture, any damage caused by the original purchaser or any third party, or any defects arising or discovered more than one (1) year from the original retail purchase date.
- STEPS TO OBTAIN WARRANTY SERVICE:**
 - The purchaser must call MIDWEST’s HELPLINE, 800-428-8560, to report the alleged defect to a customer service representative or obtain missing parts.
 - The customer service representative will determine if the defect is covered by this warranty, and if it is, will authorize and instruct the purchaser in how to obtain corrective action.
 - MIDWEST may require the purchaser to present the sales receipt or other proof of purchase prior to authorizing any return or replacement. No returns or replacements will be permitted without proper authorization. If a return or replacement is authorized, you may be requested to return the item to MIDWEST or to make the item available for pick-up by MIDWEST.
- ANY EXPRESS WARRANTY NOT PROVIDED IN THIS WARRANTY DOCUMENT, AND ANY REMEDY FOR BREACH OF CONTRACT THAT, BUT FOR THIS PROVISION, MIGHT ARISE BY IMPLICATION OR OPERATION OF LAW, IS HEREBY EXCLUDED AND DISCLAIMED. THE IMPLIED WARRANTIES OF MERCHANTABILITY AND OF FITNESS FOR ANY PARTICULAR PURPOSE ARE EXPRESSLY LIMITED TO A TERM OF ONE (1) YEAR. SOME STATES DO NOT ALLOW LIMITATIONS ON HOW LONG AN IMPLIED WARRANTY LASTS, SO THE ABOVE LIMITATIONS MAY NOT APPLY TO YOU.**
- UNDER NO CIRCUMSTANCES SHALL MIDWEST BE LIABLE TO PURCHASER OR ANY OTHER PERSON OR ANY SPECIAL, INCIDENTAL OR CONSEQUENTIAL DAMAGES, WHETHER ARISING OUT OF BREACH OF WARRANTY, BREACH OF CONTRACT OR OTHERWISE, SOME STATES DO NOT ALLOW THE EXCLUSION OR LIMITATIONS OF INCIDENTAL OR CONSEQUENTIAL DAMAGES, SO THE ABOVE LIMITATIONS OR EXCLUSION MAY NOT APPLY TO YOU.**
- This warranty gives you specific legal rights, and you may also have other rights which vary from state to state.