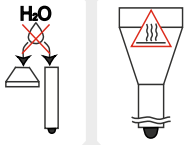
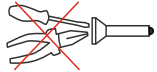
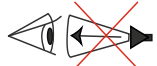


Warnings



1. Always follow the instructions from this manual and recommendations on battery usage.
2. Apply only the recommended power sources.
3. Do not reverse battery polarity.
4. Do not use different power sources together, i.e. old ones with new ones, charged with discharged. Do not use different types of batteries combined as the element with less capacity can be damaged.
5. Do not modify or recast the flashlight and its components as it will deprive you of the warranty.
6. Do not allow water or any other liquid to leak into the flashlight.
7. Do not aim a turned-on flashlight at people's or animals' eyes – it can cause temporary blindness.
8. Do not allow children to use the flashlight without your assistance.

! Armytek Optoelectronics Inc. shall not be liable for any harm done to the user if it was caused by improper use of the product.

Care and Storage

It is recommended to clean the threads and O-rings off dirt and old grease. Remember that secure protection from water and dust cannot be provided by worn out sealing. And fouling as well as lack of lubricant cause fast wear-out of threads and sealing rings.

To clean the threads do the following:

1. Unscrew the tailcap and remove the sealing ring carefully with a toothpick (do not use sharp metal things as they can damage the ring).
2. Wipe the sealing ring thoroughly with a soft cloth (or tissue). Do not use solvents. If the sealing ring is worn out or damaged replace it by a new one.
3. Clean the metal threads with a brush using ethanol. Be careful not to allow applied liquid to get inside the flashlight or tailcap as it can cause fails in functionality of the flashlight.

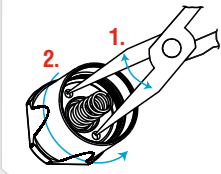
After cleaning lubricate the thread and the sealing ring with polyalphaolefin-based silica grease, e.g. Nyogel 760G. The application of automotive and other improper grease can cause swelling and damage of the sealing rings.

In case of active operation and exploitation in dusty environments, it is recommended to perform cleaning and lubricating of the parts as often as required, even if it is more than twice a year.

In case the rubber button is damaged, it should be replaced. In the same way you can also replace the switch with the spring.

Replacement order:

1. Unscrew the tailcap.
2. Unscrew the first washer inside it to take out the switch. To do so you should use needle-nose pliers (round-nose pliers or another tool: most suitable will be expansion pliers). Use the tool as it is shown at the picture. To replace the rubber button unscrew the second washer under the switch.
3. Replace the rubber button and assemble the parts in inverse sequence.



! Do not disassemble the flashlight except for unscrewing the thread ring gage and replacing the rubber button. There are no other parts in the flashlight that can be replaced by the user.

Service and Warranty

Armytek provides free warranty repair for 10 years from the purchase.

Warranty doesn't cover damage caused by:

1. Improper usage.
2. Attempts to modify or repair the flashlight by nonqualified specialists.
3. Longtime application in chlorinated or polluted water, or other liquids (other than water).
4. High temperatures and chemicals' exposure (including the exposure of liquid from defected batteries).
5. Usage of low-quality batteries.

Armytek Optoelectronics Inc.

Web: www.armytek.com Email: service@armytek.com
Address: 67 Vandervoort Dr, Richmond Hill, Ontario, L4E 0C7, Canada

Specifications are subject to change without notice.

Predator

THE MOST TECHNICALLY ADVANCED
FLASHLIGHTS IN THE WORLD

USER MANUAL

Thank you for choosing the products of Armytek Optoelectronics Inc., Canada.
Please read this manual carefully before using the flashlight.

Specifications

Armytek Optoelectronics Inc. is a Canadian manufacturer that produces powerful and reliable flashlights designed especially for your needs applying in them components made in the USA and Japan. **10 years no-hassle warranty.**

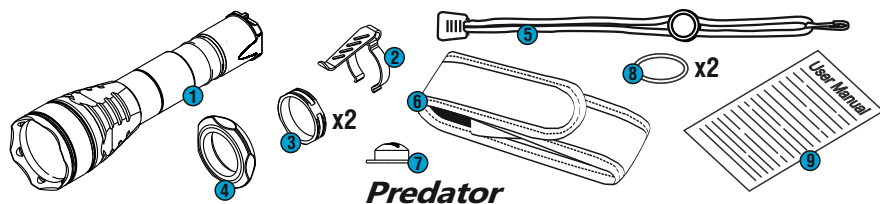
- Extreme beam distance up to 381 meters
- Impressive brightness 700 LED lumens
- Distinct hotspot and minimal spill guarantee directed aim illumination
- Standard 1" body diameter matches up with most weapon mounts
- Reliable body, red/green/blue filters and original remote switches for comfortable Hunting and secure Military application
- Guaranteed durability — stands up the recoil of any gun gauge and falling from 30 meters height
- The flashlight works for more than 5 hours at 50 meters depth
- Record runtime with 1x18650 Li-Ion battery in all modes

Model	Predator	Predator (Green)	Predator (Red)
LED	Cree XB-H		
Optics	Smooth Ultra-Throw Reflector		
Brightness stabilization type	FULL (in Max mode - DIGITAL)	FULL	FULL
Light output, LED / OTF lumens*	700 / 550	270 / 235	210 / 180
Peak beam intensity, candelas	36200	13000	10000
Hotspot/spill	4° / 40°	5° / 40°	5° / 40°
Beam distance*	381 meters	250 meters	220 meters
Hotspot diameter at 100 meters	7 meters	9 meters	9 meters
Modes and runtimes (measured for Armytek 18650 Li-Ion 3100 mAh to the decrease to 10% of initial brightness)	Firefly: 21m / 18d Main1: 30lm / 48h Main2: 150lm / 8.5h Main3: 310lm / 3.5h Max: 550lm / 2h 15min Strobe: 15 Hz / 3h	Firefly: 31m / 18d Main1: 35lm / 48h Main2: 95lm / 19h Main3: 155lm / 7h Max: 235lm / 4h Strobe: 15Hz / 8h	Firefly: 11m / 18d Main1: 15lm / 48h Main2: 40lm / 19h Main3: 80lm / 7h Max: 180lm / 4h Strobe: 15Hz / 3h
Power source	1x18650 Li-Ion / 2x18350 Li-Ion / 2xRCR123 Li-Ion / 2xCR123A		
Size	Length 154mm, body diameter 25.4mm, head diameter 41mm		
Weight (without batteries)	135g		

* Light outputs for flashlights with Warm light are about 7% less, beam distances are about 3% less.

! We highly recommend NOT to use LOW-QUALITY CR123A batteries as a power source for often and continuous flashlight's operation. Remember that old or low-quality disposal batteries can be damaged under heavy load and explode.

Set description



Predator

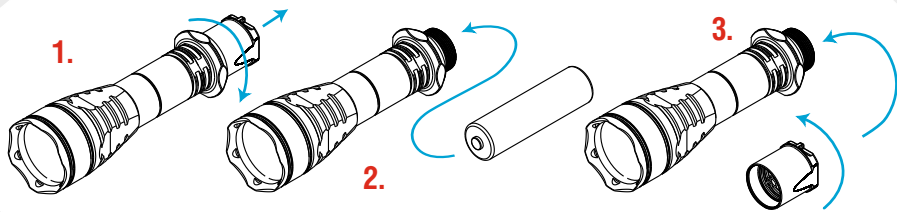
Items included in the package:

- | | |
|--------------------|-------------------------|
| 1 - Flashlight | 6 - Holster |
| 2 - Clip | 7 - Spare rubber button |
| 3 - 2 rubber rings | 8 - 2 spare O-rings |
| 4 - Rubber grip | 9 - User manual |
| 5 - Lanyard | |



- ✓ Depending on the model, your flashlight can considerably differ from the pictures in the manual.
- ✓ The producer reserves the right to change the package at his own discretion without modifying this manual.

Initial Service



To set/replace batteries:

1. Unscrew the tailcap.
2. Place the batteries with the positive contact (+) facing the head of the flashlight.
3. Adjust the tailcap and tighten it as far as it can go.



We recommend NOT to leave power sources inside the flashlight for a long storage period, as batteries (especially, non-rechargeable) can leak for various reasons and damage the inner parts of the flashlight. If you want to keep your flashlight in a stand-by state with batteries in, use new and quality batteries, store the flashlight in acceptable for batteries operational temperature and revise the batteries' state at least once a month. If you have noticed any signs of batteries' defects, withdraw them from the flashlight and take out of operation. It is also recommended to replace discharged batteries with new ones before the storage as the chance of leakage is higher with discharged batteries.

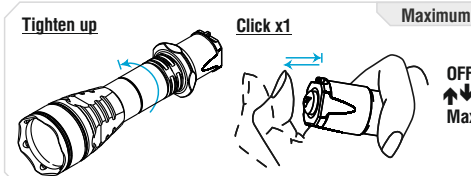
Operation

The flashlight has several operational variants:

Maximum — permanently switched light at Maximum mode (activated by click with the head of the flashlight tightened up). It's an easy and comfortable operational mode for Hunters, especially when the flashlight is used with a remote switch.

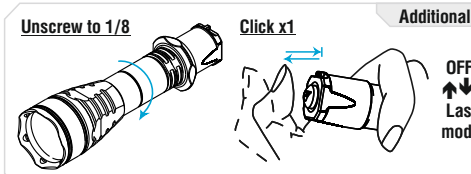
Additional — permanently switched light at one of the Additional modes at user's choice (activated by click with the head of the flashlight unscrewed to 1/8). Additional modes: Firefly, Main1, Main2, Main3, Strobe (hidden).

Tactical — any mode switched on by half-pressing of the button and active till the button is released. In Maximum mode suitable for giving signals by short button pressings. In Additional mode quick half-pressings can be used to switch modes.



Maximum:

1. Tighten the head of the flashlight if it is unscrewed.
2. First full click of the button turns the light on.
3. Second full click turns it off.



Additional

Additional (Firefly + 3 Main modes + Strobe (if enabled)):

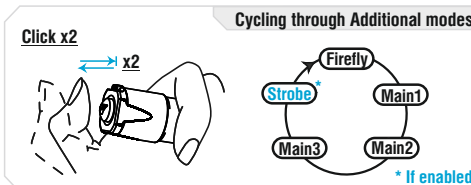
1. If the head of the flashlight is tightened up, unscrew it for 1/8 of a circle.

2. First full click of the button turns the light on at the last used Additional mode.

Cycling through Additional modes:

1. To switch the mode turn the flashlight off and on (either by full click or half-pressing).

2. The modes switch cyclically: Firefly - Main1 - Main2 - Main3 - Strobe (if enabled).



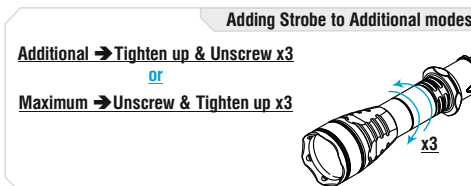
Cycling through Additional modes

Strobe is a hidden mode which you can add or remove from the additional modes at your choice. To enable (remove) Strobe:

1. If the head of the flashlight is tightened up (Maximum), unscrew and tighten up the head of the flashlight quickly 3 times.

2. If the head of the flashlight is unscrewed (Additional), tighten up and unscrew the head of the flashlight quickly 3 times.

3. Strobe is added as the last mode in a cycle: Firefly - Main1 - Main2 - Main3 - Strobe.



Adding Strobe to Additional modes

Additional → Tighten up & Unscrew x3

Maximum → Unscrew & Tighten up x3

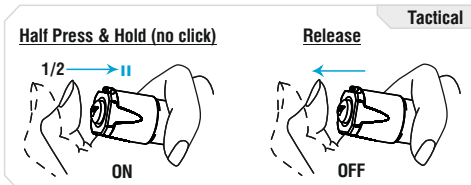
Tactical:

1. For tactical activation use half-pressing of the button (no click!).

2. To access the Maximum mode the head of the flashlight must be tightened, to access Additional modes it must be unscrewed to 1/8 of a circle.

3. The light remains on while you half press the button.

We recommend to use Maximum mode for short-time tactical lighting and giving signals. Frequent half-pressings (<5sec between them) with the head unscrewed to 1/8 can be used for switching Additional modes.



Automemorizing. After switching off the last used Mode is memorized for quick 1-click access at next switching on.

Lock-out function. Unscrew the tailcap to 1/4 for the protection from accidental switching on.

Low Battery Indication. When it is <10%, the LED flashes 2 times ONCE. If you are not sure if it flashed or not switch the flashlight off and on: in case the battery is low flashes will be repeated. At critical level light output decreases to Firefly mode.