

00-05

TABLE OF CONTENTS

BOOK B

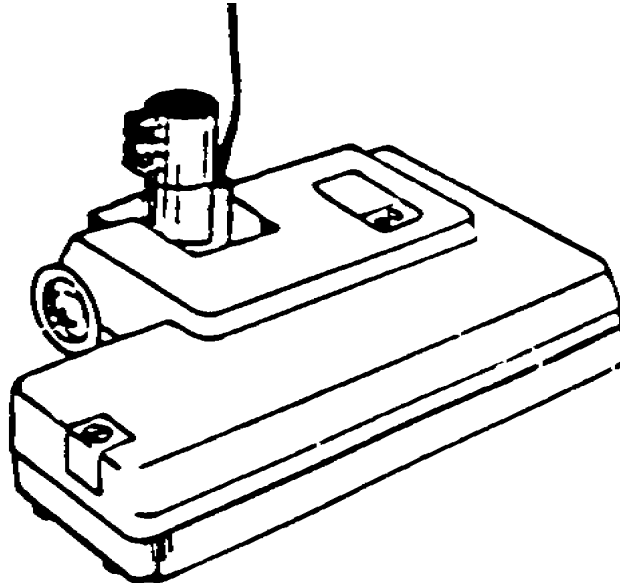
00-09

UZ 984 POWER NOZZLE

B

0.3.1

31



DESCRIPTION

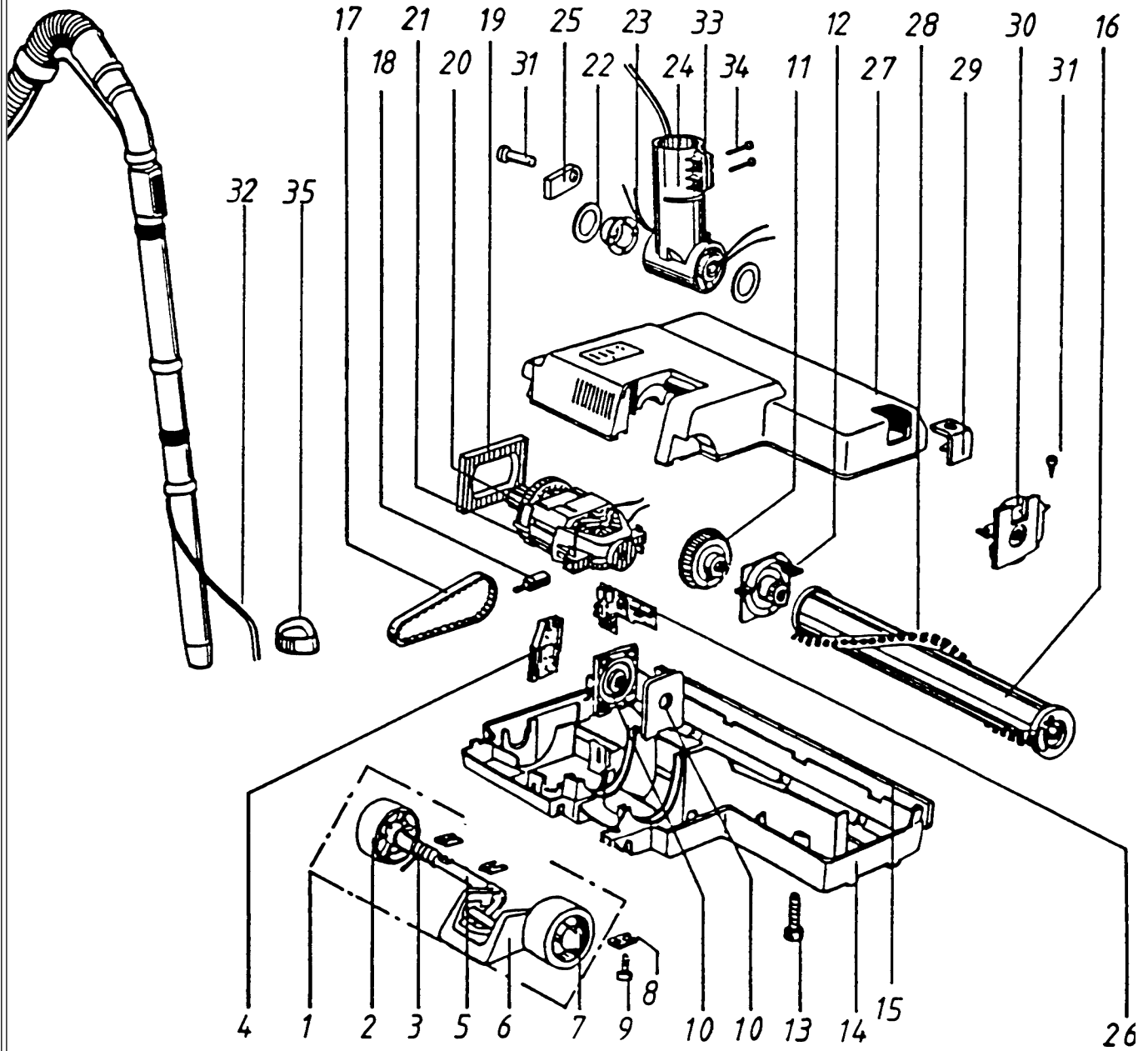
PLAN

Parts, line drawing

B - 0.3.1 - 32

Parts, part numbers

B - 0.3.1 - 33



00-05	PARTS LIST	BOOK B		
00-09	UZ 984 PART NUMBER	B	0.3.1	33

<u>Item No.</u>	<u>Qty.</u>	<u>Part No.</u>	<u>Description</u>
1	1	093 1751-000	Shaft complete
2	2	093 1750-000	Wheel
3	1	093 1752-000	Tension spring
4	1	142 0882-000	Bearing plate
5	1	093 1754-000	Shaft
6	1	093 1755-000	Pedal
7	2	093 1757-000	Locking cap
8	3	093 1759-000	Washer
9	5	093 1760-000	Screw RXS 3,9x13 Z.pl
10	2	142 0883-000	Bearing cpl.
11	1	142 0559-000	Brush roller, pulley
12	1	093 1763-000	Bearing
13	4	093 1764-000	Screw MRX M5x25
14	1	142 0884-000	Cover, lower part
15	1	142 0885-000	Bumper
16	1	093 1769-000	Brush unit.
17	1	093 1781-000	Gear belt
18	2	093 1783-000	Carbon brush
19	1	093 1782-000	Motor insulation
20	1	093 1780-000	Gear
21	1	093 1779-000	Brush motor 220V
	1	093 1805-000	Brush motor 240V
	1	093 1806-000	Brush motor 110V
22	2	142 0886-000	Washer
23	2	142 0887-000	Conductro bearing
24	1	142 0888-000	Connection tube
25	1	142 0889-000	Anti-strain clip
26	1	142 0890-000	Electronic board 220V
	1	142 0891-000	Electronic board 240V
	1 >>	142 0892-000	Electronic board 110V
27	1	142 0893-000	Top
28	1	093 1770-000	Brush insert
29	1	093 1768-000	Brush strip cover
30	1	093 1767-000	Bearing
31	7	093 1756-000	Screw RXS 3,9x16
32	1	142 0894-000	Cord set
33	2	093 1786-000	Square nut M4
34	2	723 1291-010	Screw MCS 4x12
35		011 3634-000	Hot clips

>> Means: New or changed ref. number or/and changed/new specifications