

Numatic

Performance You Can Trust



Numatic

Performance You Can Trust



Cleaning is a big responsibility. The cleaning industry is compelled to drive higher quality, consistent cleaning standards to keep our employees, customers and the public safe. Delivering on today's demands and overcoming complex challenges requires professional cleaning solutions that deliver performance you can trust.

Three core values are at the centre of all Numatic product development and manufacturing... Innovation, Quality and Price. These values help us to increase productivity, cleaning standards and meet the demands of all industries, right across the globe.



Building on Sustainability

We recognise the need and demand for sustainable cleaning solutions, without compromising productivity or quality.

Built to Last
Our products are built to last with tried, tested and trusted designs, ongoing innovations, and a commitment to developing sustainable cleaning solutions.

Efficiency
We ensure our products are the most efficient for every user; from water and detergent usage to electricity consumption. We also provide online training for help and support.

Serviceability
Our products are designed to be easily and economically serviced throughout their lifetime. Not only this, but we can still service and provide replacement parts for every product we have ever made.

Recycling
We are committed to developing products using high-quality, recycled plastic. Right from the initial design, our products are manufactured to be easily recycled at the end of their life.

Disposal
We have worked hard to ensure zero waste goes to landfill and since 2017 we have achieved this. Anything that cannot be recycled is incinerated.

Why ReFlo Technology?

Our ReFlo range is engineered from the highest quality, recycled plastic, using our innovative, environmentally sustainable ReFlo Technology. ReFlo Technology uses post-industrial plastics from the automotive industry, which are diverted from landfill or incineration.



New Productivity

We continually adapt, develop and streamline our products and processes to ensure optimum **cleaning productivity**. New to the range...



NEW NX300 Pro Cordless Network

The new NX300 Pro Cordless Network delivers professional level cordless performance to a versatile and expanding range. Quicker, safer and more convenient, switching to Pro Cordless raises productivity levels, saving time and money.

Power Driving Productivity

- 36V Lithium Power
- Fast Charge
- One Fits All Battery



Ease of Use
Easy-reach carry handle and quick-release button for fuss-free battery change and charging.

Longer Lifecycle
Up to 2500 cycles with built-in battery status and health check safety system.



NX300 PRO CORDLESS NETWORK

NBV190NX / NBV240NX / PBT230NX
Combining total cordless freedom with powerful and professional cleaning results, maximising cleaning productivity and delivering the results you need without compromise.

RSU150NX
A high-pressure misting disinfection system that delivers 99.999% efficiency in inactivating and destroying pathogens.

RSB150NX
Safe and unobtrusive cleaning with enhanced user comfort, maximum cleaning productivity and unrivalled cleaning results.

244NX
Lightweight and easy to use, leaving floors clean, dry and safe whilst reducing labour costs by 70% and water use by 80%.

TTB1840NX
Compact, cordless and convenient cleaning with the performance of a much bigger machine for clean, dry, hygienic and safe floors in minutes.

Numatic X-Change

The NX300 battery packs can be used across the growing Pro Cordless Network.



HomeCare 6-13

The familiar faces of Henry and Friends bring reliability, quality and professional cleaning to every home.



CleanCare 14-27

Quality and cleaning innovation from the world's most popular, professional vacuum. CleanCare brings power, performance and reliability to our commercial cleaning product range.



ProCare 28-33

Providing performance you can trust, delivering enhanced filtration where it is needed most. Advanced, professional cleaning for the collection and control of dust and hazardous substances.



FloorCare 34-41

Providing professional cleaning results in even the most demanding environments, with innovative, reliable and effective floorcare solutions.



VersaCare 42-61

Versatility, innovation and quality are at the core of our janitorial cleaning systems. Attention to detail and practical engineering ensure complete customer satisfaction in function, operation and convenience.



HomeCare

The familiar faces of **Henry** and **Friends** bring **reliability, quality and professional cleaning** to every home.



Henry



Henry Allergy



Henry Petcare

HomeCare Contents

HomeCare Range	8-9
Henry & Hetty SprayMop	9
Hi-Line Range	10
Henry HepaFlo Bags	11
HomeCare Accessories	11-13



Henry Xtra

All the features of the Henry you know and love, plus... even more handy tools.

See page 8 for details.

Henry Range



- Henry HVR160**
- Carpets, hard-floors, cars, stairs, DIY
 - Handy on-board tool storage
 - Emptying with no dust and no mess
 - 320x340x345mm (WxLxH)

Capacity (L)	6.0	Weight (KG)	7.5
Power Cord (M)	10.0	Power (Volts AC/Hz)	230 / 50/60
Motor (W)	620	Cleaning Range (M)	26.1
Suction H ₂ O (MM)	2300	Kit (see page 11)	AS0



- Hetty HET160**
- Carpets, hard-floors, cars, stairs, DIY
 - Handy on-board tool storage
 - Emptying with no dust and no mess
 - 320x340x345mm (WxLxH)

Capacity (L)	6.0	Weight (KG)	7.5
Power Cord (M)	10.0	Power (Volts AC/Hz)	230 / 50/60
Motor (W)	620	Cleaning Range (M)	26.1
Suction H ₂ O (MM)	2300	Kit (see page 11)	AS0

“ With over **15 million** made, and most still in use... Henry really is the vacuum you can trust. ”



- Henry Allergy HVA160**
- High-performance Combi Floor Tool
 - Specialist FreeFlo Hard Floor Tool
 - Advanced, 3-stage HEPA filtration
 - Handy on-board tool storage
 - Emptying with no dust, no mess, no allergens
 - 320x340x345mm (WxLxH)

Capacity (L)	6.0	Weight (KG)	7.7
Power Cord (M)	10.0	Power (Volts AC/Hz)	230 / 50/60
Motor (W)	620	Cleaning Range (M)	26.1
Suction H ₂ O (MM)	2300	Kit (see page 11)	AS9



- Henry Cordless HVB160 1 & 2 Battery**
- Power boost for more demanding clean-ups
 - 3.5hr quick charge
 - Handy on-board tool storage
 - Emptying with no dust and no mess
 - 320x340x320mm (WxLxH)

Capacity (L)	6.0	Weight (KG)	6.4
Motor (W)	1200	Runtime 1 Battery (MIN)	Hi 20 / Lo 30
Suction H ₂ O (MM)	2500	Runtime 2 Battery (MIN)	Hi 40 / Lo 60
Charge Time (HRS)	3.5	Power (Lithium Bat. Volts)	36
		Kit (see page 13)	AS29E



- Charles Wet&Dry CVC370**
- Versatile wet and dry tool kit
 - Blocked sinks, showers, household leaks, spills, DIY, car, home
 - 360x370x510mm (WxLxH)

Capacity (L) Dry / Wet	15.0 / 9.0	Weight (KG)	9.0
Power Cord (M)	10.0	Power (Volts AC/Hz)	230 / 50/60
Motor (W)	1000	Cleaning Range (M)	26.8
Suction H ₂ O (MM)	2400	Kit (see page 13)	A21A



- Henry HVR160 ECO**
- Our highest efficiency motor yet
 - 30% reduction in energy consumption
 - Powerful EcoBrush for stubborn dust, dirt and pet hair
 - 320x340x345mm (WxLxH)

Capacity (L)	6.0	Weight (KG)	7.7
Power Cord (M)	10.0	Power (Volts AC/Hz)	230 / 50/60
Motor (W)	420	Cleaning Range (M)	26.1
Suction H ₂ O (MM)	1750	Kit (see page 12)	HS1



- Hetty HET160 ECO**
- Our highest efficiency motor yet
 - 30% reduction in energy consumption
 - Powerful EcoBrush for stubborn dust, dirt and pet hair
 - 320x340x345mm (WxLxH)

Capacity (L)	6.0	Weight (KG)	7.7
Power Cord (M)	10.0	Power (Volts AC/Hz)	230 / 50/60
Motor (W)	420	Cleaning Range (M)	26.1
Suction H ₂ O (MM)	1750	Kit (see page 12)	HS1

Henry & Hetty Eco

Equipped with our highest efficiency motor yet, delivering a 30% reduction in energy consumption.



- Henry Wash HVW370**
- Shampoo carpets, clean hard-floors
 - Valet the car, refresh the sofa
 - Emergency clean-ups and DIY
 - 360x370x510mm (WxLxH)

Capacity (L) Clean / Dirty	5.0 / 9.0	Weight (KG)	10.6
Power Cord (M)	10.0	Power (Volts AC/Hz)	230 / 50/60
Motor (W)	1000	Cleaning Range (M)	26.0
Suction H ₂ O (MM)	2400	Kit (see page 13)	AH6

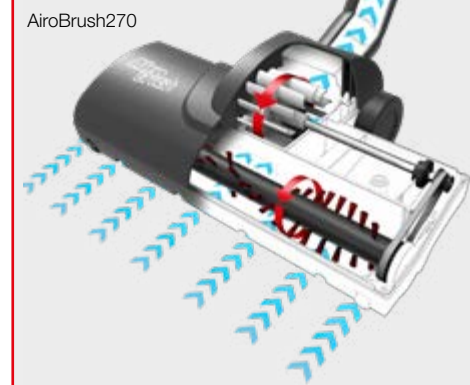


- George GVE370**
- 4-in-1 wet, dry, extraction and upholstery
 - Revive carpets, clean hard-floors, refresh the sofa, valet the car, suck-up spills and even unblock the sink
 - 360x370x510mm (WxLxH)

Capacity (L) Dry / Wet	15.0 / 9.0	Weight (KG)	11.2
Power Cord (M)	10.0	Power (Volts AC/Hz)	230 / 50/60
Motor (W)	1000	Cleaning Range (M)	26.8
Suction H ₂ O (MM)	2400	Kit (see page 13)	A26A

Henry Xtra

All the features of the Henry you know and love, plus even more handy tools.



- Henry Xtra HVX160**
- Powerful AiroBrush270 for carpets
 - Specialist Hard Floor Tool
 - A tool for every job
 - Handy on-board tool storage
 - Emptying with no dust and no mess
 - 320x340x345mm (WxLxH)

Capacity (L)	6.0	Weight (KG)	7.5
Power Cord (M)	10.0	Power (Volts AC/Hz)	230 / 50/60
Motor (W)	620	Cleaning Range (M)	26.1
Suction H ₂ O (MM)	2300	Kit (see page 12)	XS0



- Henry Petcare HPC160**
- Powerful AiroBrush270 for stubborn pet hairs on carpets
 - Compact AiroBrush140 tackles pet hairs on the stairs, sofa and in the car
 - Odour-reducing MicroFresh Filter
 - Carpets, hard-floors, cars, stairs, DIY
 - Emptying with no dust and no mess
 - 320x340x345mm (WxLxH)

Capacity (L)	6.0	Weight (KG)	7.5
Power Cord (M)	10.0	Power (Volts AC/Hz)	230 / 50/60
Motor (W)	620	Cleaning Range (M)	26.1
Suction H ₂ O (MM)	2300	Kit (see page 12)	HS0

Henry & Hetty SprayMop

Featuring an easy-fit, high-efficiency BluTec mop pad, foot or hand-operated liquid dispenser and swivel design, the Henry and Hetty SprayMop makes hard-floor cleaning quick and easy. When you've finished, simply slip-off the mop pad and pop in the wash with your next load of laundry, ready to use again and again.

- ✓ Perfect All-rounder
- ✓ Swivel Design
- ✓ Easy-fit Mop Pads
- ✓ On-board Liquid Dispenser
- ✓ Use Again and Again



Hi-Line Range



Henry HVR170

- Versatile toolkit
- Carpets, hard-floors, cars, stairs, DIY
- Handy on-board tool storage
- Emptying with no dust and no mess
- 360x370x390mm (WxLxH)

Capacity (L)	7.2	Weight (KG)	8.0
Power Cord (M)	10.0	Power (Volts AC/Hz)	230 / 50/60
Motor (W)	620	Cleaning Range (M)	26.4
Suction H ₂ O (MM)	2300	Kit (see page 11)	AS0

Henry HVR170 HEPA

- Versatile toolkit
- Carpets, hard-floors, cars, stairs, DIY
- Certified HEPA13 filtration down to 0.3 microns at 99.95% efficiency
- Emptying with no dust and no mess
- 360x370x390mm (WxLxH)

Capacity (L)	7.2	Weight (KG)	8.2
Power Cord (M)	10.0	Power (Volts AC/Hz)	230 / 50/60
Motor (W)	620	Cleaning Range (M)	26.4
Suction H ₂ O (MM)	2300	Kit (see page 11)	AS0



James JVP180

- Versatile toolkit and aluminium tube set
- Carpets, hard-floors, cars, stairs, DIY
- Convenient cable replacement system
- Handy on-board tool storage
- Emptying with no dust and no mess
- 340x365x360mm (WxLxH)

Capacity (L)	8.0	Weight (KG)	6.0
Power Cord (M)	10.0	Power (Volts AC/Hz)	230 / 50/60
Motor (W)	620	Cleaning Range (M)	26.4
Suction H ₂ O (MM)	2300	Kit (see page 12)	AH0



Henry Original

The original 200 series, a trusted and familiar face on the outside with the latest innovation inside.

Henry HVR200

- Versatile toolkit
- Carpets, hard-floors, cars, stairs, DIY
- Handy on-board tool storage
- Emptying with no dust and no mess
- 340x360x370mm (WxLxH)

Capacity (L)	9.0	Weight (KG)	8.0
Power Cord (M)	10.0	Power (Volts AC/Hz)	230 / 50/60
Motor (W)	620	Cleaning Range (M)	26.4
Suction H ₂ O (MM)	2300	Kit (see page 11)	AS0



Hetty HET200

- Versatile toolkit
- Carpets, hard-floors, cars, stairs, DIY
- Handy on-board tool storage
- Emptying with no dust and no mess
- 340x360x370mm (WxLxH)

Capacity (L)	9.0	Weight (KG)	8.0
Power Cord (M)	10.0	Power (Volts AC/Hz)	230 / 50/60
Motor (W)	620	Cleaning Range (M)	26.4
Suction H ₂ O (MM)	2300	Kit (see page 11)	AS0



Henry Xtra HVX200

- Powerful AiroBrush270 for carpets
- Specialist Hard Floor Tool
- Carpets, hard-floors, cars, stairs, DIY
- Handy on-board tool storage
- Emptying with no dust and no mess
- 340x360x370mm (WxLxH)

Capacity (L)	9.0	Weight (KG)	8.0
Power Cord (M)	10.0	Power (Volts AC/Hz)	230 / 50/60
Motor (W)	620	Cleaning Range (M)	26.4
Suction H ₂ O (MM)	2300	Kit (see page 12)	XS0



Henry Petcare HPC200

- Powerful AiroBrush270 for stubborn pet hairs on carpets
- Compact AiroBrush140 tackles pet hairs on the stairs, sofa and in the car
- Odour-reducing MicroFresh Filter
- Carpets, hard-floors, cars, stairs, DIY
- Emptying with no dust and no mess
- 340x360x370mm (WxLxH)

Capacity (L)	9.0	Weight (KG)	8.0
Power Cord (M)	10.0	Power (Volts AC/Hz)	230 / 50/60
Motor (W)	620	Cleaning Range (M)	26.4
Suction H ₂ O (MM)	2300	Kit (see page 12)	HS0



Henry HVR240

- Carpets, hard-floors, cars, stairs, DIY
- Bumper for wall and door protection
- Handy on-board tool storage
- Emptying with no dust and no mess
- 360x370x415mm (WxLxH)

Capacity (L)	9.0	Weight (KG)	9.0
Power Cord (M)	10.0	Power (Volts AC/Hz)	230 / 50/60
Motor (W)	620	Cleaning Range (M)	26.4
Suction H ₂ O (MM)	2300	Kit (see page 11)	AS0



Henry Cordless HVB170 1 & 2 Battery

- Power boost for more demanding clean-ups
- 3.5hr quick charge
- Handy on-board tool storage
- Emptying with no dust and no mess
- 360x370x390mm (WxLxH)

Capacity (L)	7.2	Weight (KG)	6.88
Motor (W)	250	Runtime 1 Battery (MIN)	Hi 20 / Lo 30
		Runtime 2 Battery (MIN)	Hi 40 / Lo 60
Suction H ₂ O (MM)	1200	Power (Lithium Bat. Volts)	36
Charge Time (HR)	3.5	Kit (see page 13)	AS29E

Henry Accessories

Look out for the logo to make sure you're getting a **Genuine Henry Accessory**.



Henry HepaFlo Bags

5 Bag Pack (NVM-1CH) 907076
10 Bag Pack (NVM-1CH) 907075

Designed for Henry, by Henry
Henry Bags are the perfect fit, maximising capacity and airflow, delivering peak suction.

All Numatic vacuum bags are 100% Carbon neutral.

Genuine Henry HepaFlo Bags are suitable for use with Henry, Hetty, Harry and James.



Pro Accessory Kit 909257

The Henry ProKit has been designed to provide the best possible and most convenient cleaning results from your Henry.

Includes - AiroBrush270, AiroBrush140 and Hard Floor Tool. Intended for dry use only.



HENRY KIT - AS0 903146



HENRY ALLERGY KIT - AS9 909193



JAMES KIT - AH0 903754

601024	Aluminium Extension Tube (x2)	912358	280mm ProFlo Combination Floor Tool	601144	65mm Dusting Tool
601051	Aluminium Tube Bend with NPC Volume Control	601141	Double Taper Hose / Tool Adaptor	601145	150mm Mattress Tool
903712	2.2m FloMax Conical Hose	601142	240mm Crevice Tool	601146	150mm Slide-on Brush Tool

HENRY PETCARE KIT - HSO 909145

601052	Stainless Steel Tube Bend with NPC Volume Control	907424	Airo 270mm Easy Ride Turbo Brush	601144	65mm Dusting Tool
601008	Stainless Steel Extension Tube (x2)	907475	Airo 140mm Hand Turbo Brush	601145	150mm Mattress Tool
903712	2.2m FloMax Conical Hose	601141	Double Taper Hose / Tool Adaptor	601146	150mm Slide-on Brush Tool
912358	280mm ProFlo Combination Floor Tool	601142	240mm Crevice Tool		

HENRY ECO KIT - HS1 607361

601052	Stainless Steel Tube Bend with NPC Volume Control	601228	EcoBrush190	601145	150mm Mattress Tool
601008	Stainless Steel Extension Tube (x2)	601141	Double Taper Hose / Tool Adaptor	601146	150mm Slide-on Brush Tool
903712	2.2m FloMax Conical Hose	601142	240mm Crevice Tool		
912358	280mm ProFlo Combination Floor Tool	601144	65mm Dusting Tool		

HENRY XTRA KIT - XS0 909146

903712	2.2m FloMax Conical Hose	907424	Airo 270mm Easy Ride Turbo Brush	601144	65mm Dusting Brush
601052	Stainless Steel Tube Bend with NPC Volume Control	900918	300mm MultiFlo Dry Brush Tool	601145	150mm Upholstery Tool
601008	Stainless Steel Extension Tube (x2)	601141	Double Taper Hose / Tool Adaptor	601146	150mm Slide-on Brush for Upholstery Tool
912358	280mm ProFlo Combination Floor Tool	601142	240mm Crevice Tool		

HENRY CORDLESS KIT - AS29E 904251

601008	Stainless Steel Extension Tube (x2)	902072	270mm Single Slot Floor Tool	601144	65mm Dusting Tool
601052	Stainless Steel Tube Bend with NPC Volume Control	601141	Double Taper Hose / Tool Adaptor	601145	150mm Mattress Tool
903712	2.2m FloMax Conical Hose	601142	240mm Crevice Tool	601146	150mm Slide-on Brush Tool

CHARLES KIT - A21A 607221

601025	Aluminium Tube Bend with (Black) Volume Control	900954	300mm MultiFlo Wet Pick-up Tool	601145	150mm Mattress Tool
601024	Aluminium Extension Tube (x2)	601141	Double Taper Hose / Tool Adaptor	601146	150mm Slide-on Brush Tool
601101	2.4m NuFlex Threaded Hose	601142	240mm Crevice Tool		
902071	300mm Combination Floor Tool	601144	65mm Dusting Tool		

HENRY WASH KIT - AH6 911861 / AS6 911124

Aluminium Tube Set with machine / Stainless Steel Tube Set with replacement kit.

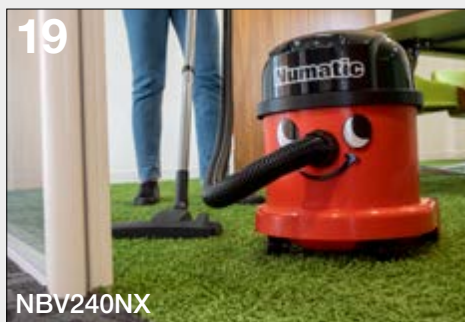
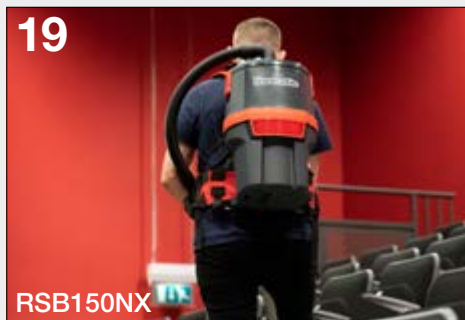
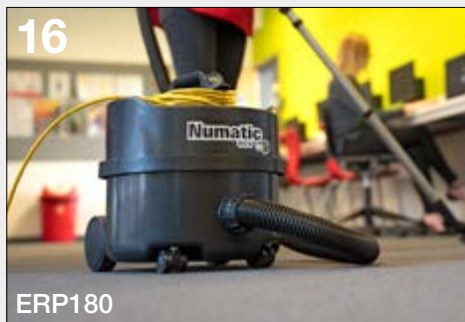
907232	Trigger Valve Wand	907474	300mm Dual Scrub / Wet Pick-up Tool	907233	Spray Tube C/W x2 clips
601024	Extension Tube (x2)	601126	275mm Fishtail Extraction Tool	907234	2.9m Solution Tube C/W x6 clips
601740	2.5m NuFlex Bayonet Hose	907235	100mm Upholstery Extraction Tool		

GEORGE KIT - A26A 607326

601009	Stainless Steel Extraction Trigger Bend Tube	601126	275mm Fishtail Extraction Tool	601141	Double Taper Hose / Tool Adaptor
601006	Stainless Steel Lower Tool Extraction Tube	907474	300mm Dual Scrub / Wet Pick-up Tool	604165	TriTex Filter for 12" / 305mm Machines
601008	Stainless Steel Extension Tube	601225	100mm Upholstery Extraction Tool	601145	150mm Mattress Tool
601010	1.9m NuFlex Bayonet Hose	601968	CleanTec Trigger Valve and Spray Tube	601146	150mm Slide-on Brush Tool
601299	3.0m CleanTec Extraction Hose	601144	65mm Dusting Tool		
902071	300mm Combination Floor Tool	601142	240mm Crevice Tool		

CleanCare

CleanCare brings **power, performance** and **reliability** to our commercial cleaning product range.



CleanCare Contents

Eco ReFlo / ProLine Contractor Range	16
Sanitise Pro Range	17
Mains Vacuums / Cordless Range	18-21
Steel Top Range	22
MicroLine / Aircraft Line	23
Dry Big Capacity Vacuums	23
Professional Wet Vacuums	24
Professional Wet & Dry Vacuums	25
Professional Carpet Extraction Cleaners	25
CleanCare Accessories	26-27



The PBT230NX is equipped with our new NX300 36V Battery Technology, delivering 300Wh capacity with a market-leading 80 minutes of consistent, powerful cleaning, giving you more time to get the job done.

See page 19 for details.



Eco ReFlo Range

Made from up to 75%* of the highest quality recycled plastic; equipped with our highest efficiency motor yet.

Delivering the same high-performance, high-quality and long-lasting Numatic results as always...



ERP180

- High-efficiency, economical cleaning
- Sustainably engineered from up to 75% recycled plastic
- Carpets, hard-floors, cars, stairs, DIY
- Handy on-board tool storage
- Plugged cable
- 340x365x360mm (WxLxH)

Capacity (L)	8.0	Weight (KG)	6.0
Power Cord (M)	10.0	Power (Volts AC/Hz)	230 / 50/60
Motor (W)	420	Cleaning Range (M)	26.4
Suction H ₂ O (MM)	1750	Kit (see page 26)	AS0

EPR170

- Equipped with our highest efficiency motor yet
- Carpets, hard-floors, cars, stairs, DIY
- Extra reach 12.5m cable with trouble-free cable rewind and additional on-board tool storage
- Plugged cable
- Emptying with no dust and no mess
- 360x370x390mm (WxLxH)

Capacity (L)	7.2	Weight (KG)	8.1
Power Cord (M)	12.5	Power (Volts AC/Hz)	230 / 50/60
Motor (W)	420	Cleaning Range (M)	31.4
Suction H ₂ O (MM)	1750	Kit (see page 26)	AS0

EPR170 HEPA

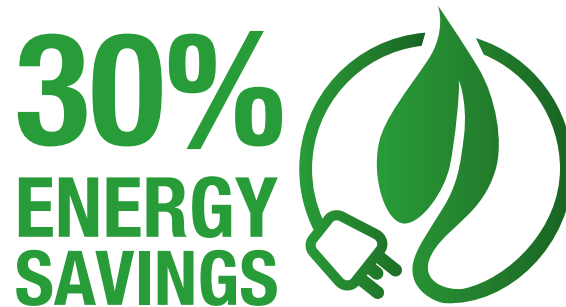
- Equipped with our highest efficiency motor yet
- Carpets, hard-floors, cars, stairs, DIY
- Certified HEPA13 filtration down to 0.3 microns at 99.95% efficiency
- Plugged cable
- Emptying with no dust and no mess
- 360x370x390mm (WxLxH)

Capacity (L)	7.2	Weight (KG)	8.3
Power Cord (M)	12.5	Power (Volts AC/Hz)	230 / 50/60
Motor (W)	420	Cleaning Range (M)	31.4
Suction H ₂ O (MM)	1750	Kit (see page 26)	AS0

* Stated figure represents maximum use of recycled plastic in ReFlo Eco range, not including kits and accessories.

Annual Energy Usage

Using our new 420W high-efficiency motor, the Eco ReFlo Range delivers professional cleaning while reducing energy usage and cost.



ProLine Contractor Range



PSP180

- Carpets, hard-floors, cars, stairs, DIY
- Handy on-board tool storage
- Professional accessory kit
- Plugged cable
- 340x365x360mm (WxLxH)

Capacity (L)	8.0	Weight (KG)	6.0
Power Cord (M)	10.0	Power (Volts AC/Hz)	230 / 50/60
Motor (W)	620	Cleaning Range (M)	26.4
Suction H ₂ O (MM)	2300	Kit (see page 26)	AH0

PSP240

- Carpets, hard-floors, cars, stairs, DIY
- Bumper for wall and door protection
- Handy on-board tool storage
- Plugged cable
- 360x370x415mm (WxLxH)

Capacity (L)	9.0	Weight (KG)	8.0
Power Cord (M)	10.0	Power (Volts AC/Hz)	230 / 50/60
Motor (W)	620	Cleaning Range (M)	26.4
Suction H ₂ O (MM)	2300	Kit (see page 26)	AH0

PSP370

- Carpets, hard-floors, cars, stairs, DIY
- Bumper for wall and door protection
- Handy on-board tool storage
- Plugged cable
- 360x370x510mm (WxLxH)

Capacity (L)	15.0	Weight (KG)	9.0
Power Cord (M)	10.0	Power (Volts AC/Hz)	230 / 50/60
Motor (W)	620	Cleaning Range (M)	26.4
Suction H ₂ O (MM)	2300	Kit (see page 26)	AH0

NEW Sanitise Pro Range

A high-pressure misting disinfection system, the NSU370 and RSU150NX Sanitise Pro range delivers 99.999% efficiency in inactivating and destroying pathogens.*



- Increased Productivity**
A consistent dispersion pattern for reliable disinfection results and even distribution increases coverage performance and dries in under 10 minutes.
- High Pressure Vortex**
On entering the lower-pressure ambient air, the high-pressure creates a vortex effect, reducing particle speed, displacement of pathogens and increasing coverage across surfaces and touchpoints. When used as a system, independent testing shows a Cationic charge to mist droplets increasing the ability to cling to complex surfaces / touchpoints.
- Solving Cleaning Solutions**
With the ability to sanitise large areas, quick-drying mist and consistent results, the Sanitise Pro range provides a simple solution to many of today's cleaning challenges.
- Performance You Can Trust**
Designed and engineered for extended use in commercial environments.



HIGH-PRESSURE MISTING DISINFECTION SYSTEM



Capacity (L)	5.0	Cleaning Range (M)	12.0
Power Cord (M)	10.0	Weight (KG)	7.2
Motor (W)	45	Hose Length (M)	2.2
Flow (ML/MIN)	150	Spray Distance Optimum (CM)	100
Droplet Size (MICRONS)	65-75	Max Pump Pressure (BAR/PSI)	15 / 217

NEW HIGH-PRESSURE MISTING DISINFECTION SYSTEM



RSU150NX

- Simple to use with high-pressure quick drying mist
- Stay cleaning for longer with a 6 hour runtime and 60min fast charge
- Effective results every time by every user across a wide range of environments
- Part of NX300 Pro Cordless Network
- High-performance pump and large capacity for extended use
- 330x330x570mm (WxLxH)

Capacity (L)	5.0	Hose Length (M)	1.5
Weight (KG)	13.0	Tank Empty (MINS)	31
Motor (W)	45	Battery Life (HRS)	6
Flow (ML/MIN)	140	Spray Distance Optimum / Max (CM)	100 / 200
Droplet Size (MICRONS)	60-70	Max Pump Pressure (BAR/PSI)	15 / 217

Whilst we recommend using TECcare® Control, the Sanitise Pro System is fully compatible with disinfectant solutions based on Quaternary Ammonium Salts or Hypochlorous Acid using appropriate dilution levels. Use of other chemical / disinfectant solutions may invalidate warranty.*

Please note:
Do not spray electrical items such as computers, monitors or electrical sockets at close distances.
*99.999% effective in inactivating and destroying pathogens when using complete Sanitise Pro System. System comprises NSU370 / RSU150NX Mist Unit applying TECcare® Control Disinfectant Solution.

Mains Vacuum Range



- PPR170**
- Easy replacement plugged cable system
 - Bumper for wall and door protection
 - Compact and convenient
 - Emptying with no dust and no mess
 - 360x370x390mm (WxLxH)

Capacity (L)	7.2	Weight (KG)	8.1
Power Cord (M)	12.5	Power (Volts AC/Hz)	230 / 50/60
Motor (W)	620	Cleaning Range (M)	31.4
Suction H ₂ O (MM)	2300	Kit (see page 26)	AS0

PPR170 HEPA

- Certified HEPA13 filtration down to 0.3 microns at 99.95% efficiency
- Bumper for wall and door protection
- Compact and convenient
- Emptying with no dust and no mess
- 360x370x390mm (WxLxH)

CONTRACTORS' Choice



- PPR240**
- Professional accessory kit
 - Bumper for wall and door protection
 - Long cleaning reach
 - Emptying with no dust and no mess
 - Plugged cable rewind
 - 360x370x415mm (WxLxH)

Capacity (L)	9.0	Weight (KG)	9.0
Power Cord (M)	12.5	Power (Volts AC/Hz)	230 / 50/60
Motor (W)	620	Cleaning Range (M)	31.4
Suction H ₂ O (MM)	2300	Kit (see page 26)	AS0



- PPR370**
- Professional accessory kit
 - Bumper for wall and door protection
 - Long cleaning reach
 - Plugged cable rewind
 - 360x370x510mm (WxLxH)

Capacity (L)	15.0	Weight (KG)	9.0
Power Cord (M)	12.5	Power (Volts AC/Hz)	230 / 50/60
Motor (W)	620	Cleaning Range (M)	31.4
Suction H ₂ O (MM)	2300	Kit (see page 26)	AS0

- PPT220**
- Convenient, lift-off storage caddy
 - Telescopic handle for ease of transit and storage
 - Large rear wheels for ease of use on stairways
 - Plugged cable rewind
 - 355x355x615mm (WxLxH)



Capacity (L)	9.0	Weight (KG)	12.3
Power Cord (M)	12.5	Power (Volts AC/Hz)	230 / 50/60
Motor (W)	620	Cleaning Range (M)	31.4
Suction H ₂ O (MM)	2300	Kit (see page 26)	AS0

HANDY Trolley Design

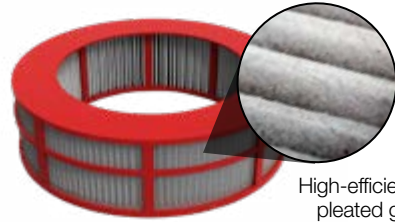


- PPT390**
- Convenient, lift-off storage caddy
 - Telescopic handle for ease of transit and storage
 - Large rear wheels for ease of use on stairways
 - Plugged cable rewind
 - 355x355x655mm (WxLxH)

Capacity (L)	15.0	Weight (KG)	12.6
Power Cord (M)	12.5	Power (Volts AC/Hz)	230 / 50/60
Motor (W)	620	Cleaning Range (M)	31.4
Suction H ₂ O (MM)	2300	Kit (see page 26)	AS0

Advanced HEPA13 Filtration

The HEPA13 filter cartridge captures and traps fine particles, such as pollen, dust mites and pathogens, bacteria, reducing the risk of recirculation of these particles back into the environment.



High-efficiency, pleated glass media construction.

Capacity (L)	7.2	Weight (KG)	8.3
Power Cord (M)	12.5	Power (Volts AC/Hz)	230 / 50/60
Motor (W)	620	Cleaning Range (M)	31.4
Suction H ₂ O (MM)	2300	Kit (see page 26)	AS0



Mains RucSac

INCREASE Cleaning PRODUCTIVITY
ENHANCED Harness



- RSV150**
- Compact, comfortable and convenient design
 - Generous 5L capacity
 - Extra-long 15m cable
 - User comfort with ergonomic harness
 - Emptying with no dust and no mess
 - 330x330x380mm (WxLxH)

Capacity (L)	5.0	Weight (KG)	7.4
Power Cord (M)	15.0	Power (Volts AC/Hz)	230 / 50/60
Motor (W)	620	Cleaning Range (M)	32.4
Suction H ₂ O (MM)	2300	Kit (see page 26)	AA30E

INCREASE Cleaning PRODUCTIVITY
ENHANCED Harness



- RSV150 HEPA**
- Compact, comfortable and convenient design
 - Generous 5L capacity
 - Certified HEPA13 filtration down to 0.3 microns at 99.95% efficiency
 - User comfort with ergonomic harness
 - Emptying with no dust and no mess
 - 330x330x380mm (WxLxH)

Capacity (L)	5.0	Weight (KG)	7.8
Power Cord (M)	15.0	Power (Volts AC/Hz)	230 / 50/60
Motor (W)	620	Cleaning Range (M)	32.4
Suction H ₂ O (MM)	2300	Kit (see page 26)	AA30E

Cordless Range



- NBV190NX**
- Newly developed, high-performance digital motor
 - Part of NX300 Pro Cordless Network
 - 80mins runtime and 1 hour fast charge
 - 340x340x340mm (WxLxH)

Capacity (L)	8.0	Runtime (MIN)	Hi 50 / Lo 80
Motor (W)	350	Charge Time (HR) %	1 - 80 / 2 - 100
Suction H ₂ O (MM)	1896	Power (Lithium Bat. Volts)	36
Weight (KG)	7.7	Kit (see page 26)	AA29E



- NBV240NX**
- Newly developed, high-performance digital motor
 - Part of NX300 Pro Cordless Network
 - 80mins runtime and 1 hour fast charge
 - Bumper for wall and door protection
 - 360x340x415mm (WxLxH)

Capacity (L)	9.0	Runtime (MIN)	Hi 50 / Lo 80
Motor (W)	350	Charge Time (HR) %	1 - 80 / 2 - 100
Suction H ₂ O (MM)	1896	Power (Lithium Bat. Volts)	36
Weight (KG)	8.1	Kit (see page 26)	AA29E



PROFESSIONAL Specifications



- PBT230NX**
- Newly developed, high-performance digital motor
 - Part of NX300 Pro Cordless Network
 - 80mins runtime and 1 hour fast charge
 - Convenient lift-off storage caddy
 - Telescopic handle for ease of transit and storage
 - 400x450x615mm (WxLxH)

Capacity (L)	9.0	Runtime (MIN)	Hi 50 / Lo 80
Motor (W)	350	Charge Time (HR) %	1 - 80 / 2 - 100
Suction H ₂ O (MM)	1896	Power (Lithium Bat. Volts)	36
Weight (KG)	10.5	Kit (see page 26)	AA29E



INCREASE Cleaning PRODUCTIVITY
ENHANCED Harness



- RSB150NX**
- Newly developed, high-performance digital motor
 - Part of NX300 Pro Cordless Network
 - 80mins runtime and 1 hour fast charge
 - User comfort with ergonomic harness
 - 330x330x470mm (WxLxH)

Capacity (L)	5.0	Runtime (MIN)	Hi 50 / Lo 80
Motor (W)	350	Charge Time (HR) %	1 - 80 / 2 - 100
Suction H ₂ O (MM)	1896	Power (Lithium Bat. Volts)	36
Weight (KG)	8.2	Kit (see page 26)	AA30E



INCREASE Cleaning PRODUCTIVITY
ENHANCED Harness



- RSB150NX HEPA**
- Newly developed, high-performance digital motor
 - Certified HEPA13 filtration down to 0.3 microns at 99.95% efficiency
 - Part of NX300 Pro Cordless Network
 - 80mins runtime and 1 hour fast charge
 - User comfort with ergonomic harness
 - 330x330x470mm (WxLxH)

Capacity (L)	5.0	Runtime (MIN)	Hi 50 / Lo 80
Motor (W)	350	Charge Time (HR) %	1 - 80 / 2 - 100
Suction H ₂ O (MM)	1896	Power (Lithium Bat. Volts)	36
Weight (KG)	8.6	Kit (see page 26)	AA30E

Numatic X-Change

The NX300 battery packs can be used across the growing Pro Cordless Network.



numatic.com/NX300

The Next Generation of Battery Technology



numatic.com/NX300

NX300 Pro Cordless Network delivers professional level performance to a versatile and expanding range. Quicker, safer and more convenient, switching to Pro Cordless raises productivity levels, saving time and money.



Smart Safe Charge System

Built-in battery status and health check safety system. The SoH (State of Health) system monitors multiple parameters ensuring battery safety.

Maximum Energy Deployment

Delivering power from cell to machine with minimum power loss via high-quality welded nickel power rails.

Integrated Heatsink Casing

Quickly and efficiently cools the pack in use, optimising delivery of power.

Integrated Cooling Design

Keeping cool allows maximum power delivery, the clever NX300 pack design eliminates air pockets acting as an insulation transmitting heat directly out of the pack.

Integrated Handle

Quickly and easily hot swap batteries across the Pro Cordless Network.



Enhanced ENERGY STORAGE

Research and development in cell chemistry and a newly developed x30 cell design delivers a 60% increase in available energy. The NX300 battery truly delivers on power with 300Wh of energy.

ONE FITS ALL Productivity

The convenience, safety and power of Pro Cordless, with reduced costs and lower maintenance from a single battery and charger system.

RUNTIME

Each product in the Pro Cordless Network is engineered to optimise the NX300 battery energy storage, providing the right balance of runtime and power for each cleaning task.

1 HOUR Fast Charge

Recharged to 80% in an hour* and ready to go for every product in the NX300 Pro Cordless Network.

COST Effective

Made for the long haul, the NX300 battery won't let you down, engineered and tested for commercial use delivering up to 2500 charge cycles.

* Higher ambient temperatures may increase charge time.



Quick and Easy Battery Change

Model	Weight (KG)	Battery Capacity (Wh)	Charge Time (HR)	Lifecycle
NX300	2.0	300	1 - 80% / 2 - 100%	Up to 2500

Power the Entire Fleet with NX300 Pro Cordless Network

More Time to Clean

Switching from corded to cordless reduces overall cleaning time every day, maximising productivity with no need to keep plugging and unplugging.



No Cable Trips

Safe and unobtrusive cleaning with no cable, making it the ideal solution to minimise the risk of slips, trips and falls.



Lower Energy Cost

High-efficiency cleaning delivers extended runtime, expanding commercial operation and applications with lower annual energy usage.



No Testing Required

No need for high-cost PAT testing on multiple corded machines when switched over to cordless.



Lower Noise

Minimising distractions and interruptions with lower noise levels compared to corded machines.



All Hours Cleaning

Combining total cordless freedom, powerful and professional cleaning results. Perfect for day cleaning and safe operation in public areas with high footfall.



Steel Top Range



ALL-STEEL

With **BLOW OUTLET**

- NQS250 / NQS250B**
- All-steel construction, tough and hard-wearing
 - Blower facility and diffuser attachment (NQS250B)
 - Quick and easy cable replacement
 - Plugged cable
 - 355x355x395mm (WxLxH)

Capacity (L)	9.0	Weight (KG)	10.0
Power Cord (M)	10.0	Power (Volts AC/Hz)	230 / 50/60
Motor (W)	780	Cleaning Range (M)	26.4
Suction H ₂ O (MM)	2350	Kit (see page 26)	AS0



- NVQ240**
- Heavy-duty, all-steel power head
 - Quick and easy cable replacement
 - Plugged cable
 - 360x370x415mm (WxLxH)

Capacity (L)	9.0	Weight (KG)	9.65
Power Cord (M)	10.0	Power (Volts AC/Hz)	230 / 50/60
Motor (W)	780	Cleaning Range (M)	26.4
Suction H ₂ O (MM)	2350	Kit (see page 26)	AS0



- NVQ370**
- Heavy-duty, all-steel power head
 - Quick and easy cable replacement
 - Plugged cable
 - 355x355x485mm (WxLxH)

Capacity (L)	15.0	Weight (KG)	10.0
Power Cord (M)	10.0	Power (Volts AC/Hz)	230 / 50/60
Motor (W)	780	Cleaning Range (M)	26.4
Suction H ₂ O (MM)	2350	Kit (see page 26)	AS0

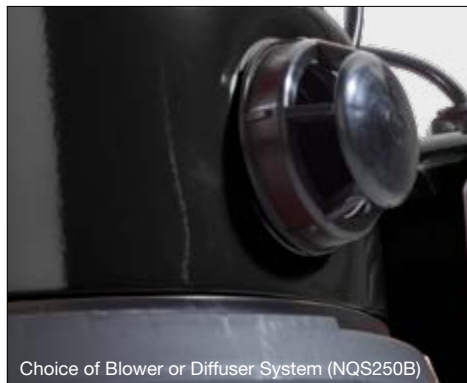


TOUGH Structofoam

- NVQ380**
- Heavy-duty, all-steel power head
 - Tough Structofoam construction
 - Quick and easy cable replacement
 - Plugged cable
 - 355x355x485mm (WxLxH)

Capacity (L)	15.0	Weight (KG)	11.35
Power Cord (M)	10.0	Power (Volts AC/Hz)	230 / 50/60
Motor (W)	780	Cleaning Range (M)	26.4
Suction H ₂ O (MM)	2350	Kit (see page 26)	AS0

Featuring an all-steel head, the Steep Tops range not only provides exceptional strength, it's also quiet and efficient.



Choice of Blower or Diffuser System (NQS250B)



Professional Specification Throughout

MicroLine

HEPA Filtration

- PPH320**
- Certified HEPA13 filtration down to 0.3 microns at 99.95% efficiency
 - Quick and easy cable replacement
 - Emptying with no dust and no mess
 - Plugged cable rewind
 - 355x355x465mm (WxLxH)

Capacity (L)	12.0	Power (Volts AC/Hz)	230 / 50/60
Power Cord (M)	12.5	Cleaning Range (M)	31.4
Motor (W)	620	Most Penetrating Particle Ref EN1822	99.95%
Suction H ₂ O (MM)	2300	Kit (see page 26)	AS0
Weight (KG)	10.0		

CLEAN ROOM Filtration

- CRQ370**
- Certified HEPA13 filtration down to 0.3 microns at 99.95% efficiency
 - Advanced 5-Stage filtration system
 - Quick and easy cable replacement
 - Conforms to ISO 14644-1 Class 5 classification
 - Emptying with no dust and no mess
 - 355x355x485mm (WxLxH)

Capacity (L)	10.0	Power (Volts AC/Hz)	230 / 50/60
Power Cord (M)	10.0	Cleaning Range (M)	26.4
Motor (W)	960	Most Penetrating Particle Ref EN1822	99.95%
Suction H ₂ O (MM)	2300	Kit (see page 26)	A1
Weight (KG)	11.5		

Aircraft Line

Aircraft Compliant

ENHANCED Harness

- RSAV130**
- Aircraft specification
 - User comfort with ergonomically designed harness
 - High-efficiency filtration
 - 250x360x440mm (WxLxH)

CAPACITY (L)	6.0	WEIGHT (KG)	7.37
POWER CORD (M)	18.2	POWER (Volts AC/Hz)	110 / 400
MOTOR (W)	960	CLEANING RANGE (M)	43.2
SUCTION H ₂ O (MM)	2400	KIT (See page 26)	AA30E

ALL Steel

- AVQ250**
- All-steel construction, tough and hard-wearing
 - Patented MicroTec noise reduction system
 - Aircraft specification
 - Plugged cable
 - 340x340x395mm (WxLxH)

CAPACITY (L)	9.0	WEIGHT (KG)	10.62
POWER CORD (M)	18.2	POWER (Volts AC/Hz)	110 / 400
MOTOR (W)	960	CLEANING RANGE (M)	43.2
SUCTION H ₂ O (MM)	2500	KIT (See page 27)	AS4

TOUGH Structofoam

- AVQ380**
- Heavy-duty, all-steel power head
 - Patented MicroTec noise reduction system
 - Aircraft specification
 - Plugged cable
 - 355x355x485mm (WxLxH)

CAPACITY (L)	15.0	WEIGHT (KG)	11.82
POWER CORD (M)	18.2	POWER (Volts AC/Hz)	110 / 400
MOTOR (W)	960	CLEANING RANGE (M)	43.2
SUCTION H ₂ O (MM)	2500	KIT (See page 27)	AS4

Dry Big Capacity Vacuums

TOUGH Structofoam

- NVQ570 / NVDQ570**
- Tough Structofoam construction
 - Directional castors for ease of movement
 - Quick and easy cable replacement
 - 415x415x645mm (WxLxH)

CAPACITY (L)	23.0	WEIGHT (KG) NVQ570	16.5
POWER CORD (M)	10.0	WEIGHT (KG) NVDQ570	18.7
MOTOR (W) NVQ570	960	POWER (Volts AC/Hz)	230 / 50/60
MOTOR (W) NVDQ570	960x2	CLEANING RANGE (M)	26.8
SUCTION H ₂ O (MM)	2300	KIT (See page 26)	BA2

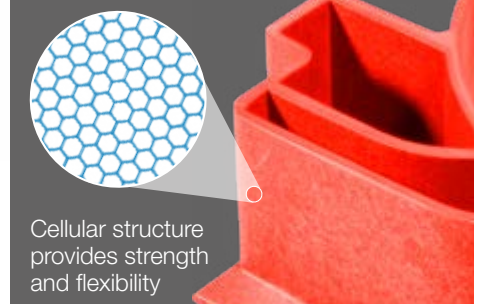
TOUGH Structofoam

- NVQ900 / NVDQ900**
- Tough Structofoam construction
 - Pull handle for ease of transit
 - Large rear wheels provide excellent mobility
 - Quick and easy cable replacement
 - 490x800x880mm (WxLxH)

CAPACITY (L)	40.0	WEIGHT (KG) NVQ900	25.2
POWER CORD (M)	10.0	WEIGHT (KG) NVDQ900	27.7
MOTOR (W) NVQ900	960	POWER (Volts AC/Hz)	230 / 50/60
MOTOR (W) NVDQ900	960x2	CLEANING RANGE (M)	26.8
SUCTION H ₂ O (MM)	2300	KIT (See page 26)	BA2

Structofoam

- ✓ Incredibly tough & long-lasting
- ✓ Hard-wearing & chemical-resistant
- ✓ Exceptional strength-to-weight ratio
- ✓ Lightweight & ergonomic structure



Cellular structure provides strength and flexibility

Professional Wet Vacuums



BEST SELLING Wet Vac

- WV370**
- Wet or dry
 - Compact and easy to store
 - Lightweight with easy carry handle
 - Convenient emptying
 - 360x370x510mm (WxLxH)

CAPACITY (L) DRY	15.0	WEIGHT (KG)	8.65
CAPACITY (L) WET	9.0	POWER (Volts AC/Hz)	230 / 50/60
POWER CORD (M)	10.0	CLEANING RANGE (M)	26.8
MOTOR (W)	1000	KIT (See page 27)	AA12
SUCTION H ₂ O (MM)	2400		



- WV470**
- Wet or dry
 - Compact and capable
 - Convenient folding transit handle
 - Large rear wheels for ease of movement
 - 360x370x710mm (WxLxH)

CAPACITY (L) DRY	27.0	WEIGHT (KG)	11.15
CAPACITY (L) WET	20.0	POWER (Volts AC/Hz)	230 / 50/60
POWER CORD (M)	10.0	CLEANING RANGE (M)	26.8
MOTOR (W)	1000	KIT (See page 27)	AA12
SUCTION H ₂ O (MM)	2400		



- WV570 / WVD570**
- Wet or dry
 - Easy emptying
 - Heavy-duty Structofoam construction
 - Convenient cable replacement system
 - 415x415x645mm (WxLxH)

CAPACITY (L) DRY	23.0	WEIGHT (KG) WV570	16.3
CAPACITY (L) WET	15.0	WEIGHT (KG) WVD570	18.5
POWER CORD (M)	10.0	POWER (Volts AC/Hz)	230 / 50/60
MOTOR (W) WV570	1000	CLEANING RANGE (M)	26.8
MOTOR (W) WVD570	1000x2	KIT (See page 27)	BS8
SUCTION H ₂ O (MM)	2400		

Professional Wet & Dry Vacuums



The unique high-efficiency, dual washable filter system in the CV range, enables the user to switch from dry to wet pick-up without the hassle of changing filters or kits.



- CV570 / CVD570**
- Wet and dry pick-up
 - Washable filter system
 - Heavy-duty Structofoam construction
 - Convenient emptying
 - 415x415x645mm (WxLxH)

CAPACITY (L)	13.0	WEIGHT (KG) CV570	16.3
POWER CORD (M)	10.0	WEIGHT (KG) CVD570	18.5
MOTOR (W) CV570	1000	POWER (Volts AC/Hz)	230 / 50/60
MOTOR (W) CVD570	1000x2	CLEANING RANGE (M)	26.8
SUCTION H ₂ O (MM)	2400	KIT (See page 27)	BS8



- CV900 / CVD900**
- Wet and dry pick-up
 - Washable filter system
 - Heavy-duty Structofoam construction
 - Convenient emptying
 - 490x800x880mm (WxLxH)

CAPACITY (L)	30.0	WEIGHT (KG) CV900	25.2
POWER CORD (M)	10.0	WEIGHT (KG) CVD900	27.7
MOTOR (W) CV900	1000	POWER (Volts AC/Hz)	230 / 50/60
MOTOR (W) CVD900	1000x2	CLEANING RANGE (M)	26.8
SUCTION H ₂ O (MM)	2400	KIT (See page 27)	BS8



- WV900 / WVD900**
- Wet or dry
 - Easy empty tip handle
 - Heavy-duty Structofoam construction
 - Convenient cable replacement system
 - 490x800x880mm (WxLxH)

CAPACITY (L) DRY	40.0	WEIGHT (KG) WV900	25.2
CAPACITY (L) WET	32.0	WEIGHT (KG) WVD900	28.0
POWER CORD (M)	10.0	POWER (Volts AC/Hz)	230 / 50/60
MOTOR (W) WV900	1000	CLEANING RANGE (M)	26.8
MOTOR (W) WVD900	1000x2	KIT (See page 27)	BS8
SUCTION H ₂ O (MM)	2400		



- WV1800DH / WVD1800DH / WVD1800AP**
- Wet use only
 - Easy emptying with rear dump hose
 - Heavy-duty Structofoam construction
 - Rear Auto Pump for continuous water extraction (AP model only)
 - Convenient cable replacement system
 - 684x785x935mm (WxLxH)

CAPACITY (L) WET	70.0	WEIGHT (KG) WVD1800DH	34.0
POWER CORD (M)	10.0	WEIGHT (KG) WVD1800AP	40.4
MOTOR (W) WV1800DH	1000	POWER (Volts AC/Hz)	230 / 50/60
MOTOR (W) WVD1800DH / AP	1000x2	CLEANING RANGE (M)	26.8
SUCTION H ₂ O (MM)	2400	KIT (See page 27)	BS7
WEIGHT (KG) WV1800DH	31.5		



- WVD2000DH / WVD2000AP**
- Heavy-duty steel chassis for ease of transit
 - Easy emptying with rear dump hose
 - Heavy-duty Structofoam head construction
 - Convenient cable replacement system
 - Rear Auto Pump for continuous water extraction (AP model only)
 - 640x530x970mm (WxLxH)

CAPACITY (L) WET	70.0	WEIGHT (KG) WVD2000AP	36.4
POWER CORD (M)	10.0	POWER (Volts AC/Hz)	230 / 50/60
MOTOR (W) WVD2000DH / AP	1000x2	CLEANING RANGE (M)	26.8
SUCTION H ₂ O (MM)	2400	KIT (See page 27)	BS7
WEIGHT (KG) WVD2000DH	28.9		

Professional Carpet Extraction Cleaners



- CT370**
- Wet, spray extraction carpet cleaning, upholstery cleaning and car valeting
 - Compact and easy to store
 - Large rear wheels for ease of transit
 - 355x355x510mm (WxLxH)

CAPACITY (L) DRY	15.0	WEIGHT (KG)	11.23
CAPACITY (L) WET	9.0	POWER (Volts AC/Hz)	230 / 50/60
POWER CORD (M)	10.0	CLEANING RANGE (M)	26.8
MOTOR (W)	1000	KIT (See page 27)	A40A
SUCTION H ₂ O (MM)	2400		

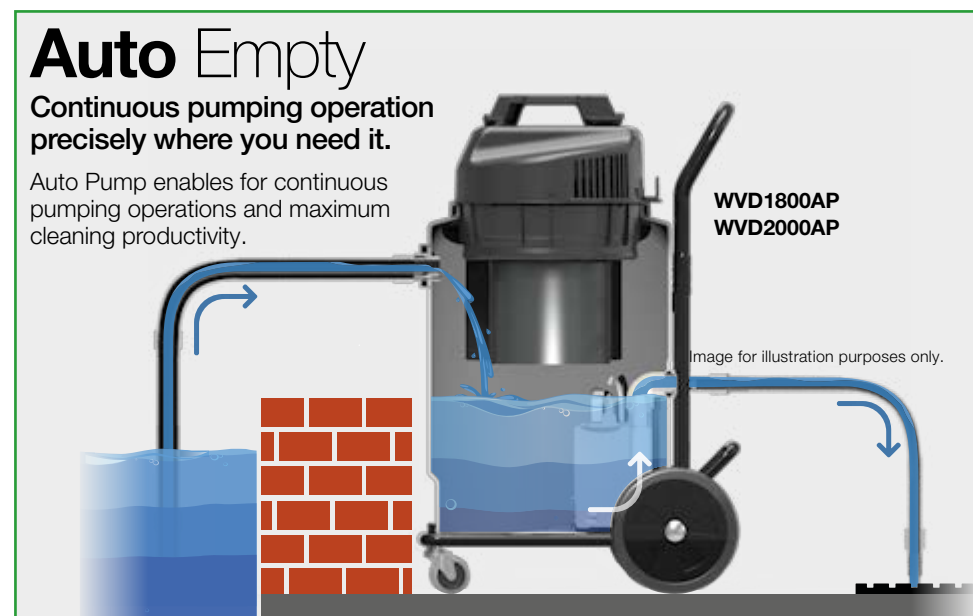


- CT470**
- Wet, spray extraction carpet cleaning, upholstery cleaning and car valeting
 - Compact and easy to store
 - Large rear wheels and folding handle for ease of transit
 - 358x450x710mm (WxLxH)

CAPACITY (L) DRY	27.0	WEIGHT (KG)	14.4
CAPACITY (L) WET	20.0	POWER (Volts AC/Hz)	230 / 50/60
POWER CORD (M)	10.0	CLEANING RANGE (M)	26.8
MOTOR (W)	1000	KIT (See page 27)	A40A
SUCTION H ₂ O (MM)	2400		



Ergonomic convenient folding handle, large rear wheels and directional castors ease stability during transit.



- CT570 / CTD570**
- Wet, spray extraction carpet cleaning, upholstery cleaning and car valeting
 - Heavy-duty Structofoam construction
 - Convenient cable replacement system
 - 415x415x645mm (WxLxH)

CAPACITY (L) DRY	23.0	WEIGHT (KG) CT570	18.98
CAPACITY (L) WET	15.0	WEIGHT (KG) CTD570	20.0
POWER CORD (M)	10.0	POWER (Volts AC/Hz)	230 / 50/60
MOTOR (W) CT570	1000	CLEANING RANGE (M)	26.8
MOTOR (W) CTD570	1000x2	KIT (See page 27)	A41A
SUCTION H ₂ O (MM)	2400		



- CT900 / CTD900**
- Wet, spray extraction carpet cleaning, upholstery cleaning and car valeting
 - Easy emptying with tip handle
 - Heavy-duty Structofoam construction
 - 490x800x880mm (WxLxH)

CAPACITY (L) DRY	40.0	WEIGHT (KG) CT900	25.28
CAPACITY (L) WET	32.0	WEIGHT (KG) CTD900	27.78
POWER CORD (M)	10.0	POWER (Volts AC/Hz)	230 / 50/60
MOTOR (W) CT900	1000	CLEANING RANGE (M)	26.8
MOTOR (W) CTD900	1000x2	KIT (See page 27)	A41A
SUCTION H ₂ O (MM)	2400		



- NHL15**
- Carpet cleaning and upholstery / spot cleaning tools
 - Uniform fluid distribution with TriJet carpet extraction
 - Hi-Lo system for pressure when you need it
 - 435x425x725mm (WxLxH)

CAPACITY (L) WET	15.0	WEIGHT (KG)	35.0
POWER CORD (M)	10.0	POWER (Volts AC/Hz)	230 / 50/60
MOTOR (W)	1000	CLEANING RANGE (M)	26.8
SUCTION H ₂ O (MM)	2400	KIT (See page 27)	BS27

Dry Kits

AH0 903754

903712	2.2m FloMax Conical Hose	912358	280mm ProFlo Combination Floor Tool	601144	65mm Soft Dusting Brush
601051	Aluminium Tube Bend with NPC Volume Control	601141	Double Taper Hose / Tool Adaptor	601145	150mm Upholstery Tool
601024	Aluminium Extension Tube (x2)	601142	240mm Crevice Tool	601146	150mm Slide-on Brush for Upholstery Tool

AS0 903146

601008	Stainless Steel Extension Tube (x2)	912358	280mm ProFlo Combination Floor Tool	601144	65mm Soft Dusting Brush
601052	Stainless Steel Tube Bend with NPC Volume Control	601141	Double Taper Hose / Tool Adaptor	601145	150mm Upholstery Tool
903712	2.2m FloMax Conical Hose	601142	240mm Crevice Tool	601146	150mm Slide-on Brush for Upholstery Tool

A1 607301

601008	Stainless Steel Extension Tube (x2)	902071	300mm Combination Floor Nozzle	601144	65mm Soft Dusting Brush
601052	Stainless Steel Tube Bend with NPC Volume Control	601141	Double Taper Hose / Tool Adaptor	601145	150mm Upholstery Tool
602102	2.4m NuFlex Threaded Hose	601142	240mm Crevice Tool	601146	150mm Slide-on Brush for Upholstery Tool

NA1 607364

60107	1.9m NuFlex Threaded Hose	601024	Aluminium Extension Tube (x2)	601142	240mm Crevice Tool
601051	Aluminium Tube Bend with NPC Volume Control	902071	300mm Combination Floor Tool	601144	65mm Soft Dusting Brush

Specialised Kits

BA2 607164

602102	2.4m NuFlex Threaded Hose	602930	Aluminium Extension Tube (x2)	602256	65mm Soft Dusting Brush with Tube Adaptor
602931	Aluminium Tube Bend	602384	400mm ProFlo Brush / Rubber Floor Tool	602160	305mm ABS Crevice Tool

AA30E 607395

913003	1.2m NuFlex RSV / RSB Threaded Hose	601024	Aluminium Extension Tube (x2)	601141	Double Taper Hose / Tool Adaptor
601051	Aluminium Tube Bend with NPC Volume Control	912358	280mm ProFlo Combination Floor Tool	601144	65mm Soft Dusting Brush

AA29E 607391

601101	2.4m NuFlex Threaded Hose	912358	280mm ProFlo Combination Floor Tool	601144	65mm Soft Dusting Brush
601051	Aluminium Tube Bend with NPC Volume Control	601141	Double Taper Hose / Tool Adaptor	601145	150mm Upholstery Tool
601024	Aluminium Extension Tube (x2)	601142	240mm Crevice Tool	601146	150mm Slide-on Brush for Upholstery Tool

AS4 900961

903712	2.2m FloMax Conical Hose	601430	290mm FreeFlo Floor Tool	601144	65mm Soft Dusting Brush
601052	Stainless Steel Tube Bend with NPC Volume Control	601141	Double Taper Hose / Tool Adaptor	601145	150mm Upholstery Tool
601008	Stainless Steel Extension Tube (x2)	601142	240mm Crevice Tool	601146	150mm Slide-on Brush for Upholstery Tool

Wet Kits

AA12 607240

601101	2.4m NuFlex Threaded Hose	601024	Aluminium Extension Tube (x2)	900918	300mm MultiFlo Dry Brush Tool
601025	Aluminium Tube Bend with (Black) Volume Control	900954	300mm MultiFlo Wet Pick-up Tool		

BS7 607249

602102	2.4m NuFlex Threaded Hose	602920	Stainless Steel Extension Tube (x2)		
602919	Stainless Steel Tube Bend	602380	400mm ProFlo Wet Pick-up Floor Tool		

BS8 607241

602102	2.4m NuFlex Threaded Hose	602920	Stainless Steel Extension Tube (x2)	602381	400mm ProFlo Dry Pick-up Floor Tool
602919	Stainless Steel Tube Bend	602380	400mm ProFlo Wet Pick-up Floor Tool		

Extraction Kits

A40A 607147

601399	4.0m CleanTec Extraction Hose	601008	Stainless Steel Extension Tube	601968	CleanTec Trigger Valve and Spray Tube
601009	Stainless Steel Extraction Trigger Bend Tube	601126	275mm Fishtail Extraction Tool		
601006	Stainless Steel Lower Tool Extraction Tube	601225	100mm Upholstery Extraction Tool		

A41A 607148

601399	4.0m CleanTec Extraction Hose	601008	Stainless Steel Extension Tube	601968	CleanTec Trigger Valve and Spray Tube
601009	Stainless Steel Extraction Trigger Bend Tube	601423	275mm Aluminium Extraction Tool		
601006	Stainless Steel Lower Tool Extraction Tube	601225	100mm Upholstery Extraction Tool		

BS27 607248

602399	4.0m CleanTec Extraction Hose	602937	145mm Stainless Steel Extension Tube	602225	100mm Upholstery Extraction Tool
602922	Stainless Steel Extraction Tube Bend	602200	CleanTec TriJet Extraction Floor Tool Assembly		
602920	Stainless Steel Extension Tube (x2)	602300	CleanTec TriJet Trigger and Solution Tube Assembly		

ProCare

Advanced, professional cleaning for the collection and **control of dust** and **hazardous substances.**



HZC390S



NTD750



TEM390A

ProCare Contents

NuTec Industrial Range	30
Anti-Static	30
DustCare Range	30
TradeLine Range	30
H-Class Range	31
ProCare Accessories	32-33

TRADELINE 390



Compact, tough and highly mobile, the TradeLine vacuum combines a specialist on-tool extractor with a big clean-up machine.

See page 30 for details.



NuTec Industrial Range

NTD750

- TwinFlo 2-motor Structofoam power head
- Industrial vacuum suitable for many applications including: boiler cleaning, floor cleaning, metalworking, dirt, dust or debris, and more
- 510x510x960mm (WxLxH)



CAPACITY (L)	35.0	WEIGHT (KG)	20.8
POWER CORD (M)	10.0	POWER (Volts AC/Hz)	230 / 50/60
MOTOR (W)	1000x2	CLEANING RANGE (M)	26.8
SUCTION H ₂ O (MM)	2400	KIT (See page 32)	BA5

NTD2003

- Big capacity machine with TwinFlo 2-motor Structofoam power head
- Stainless steel container with heavy-duty chassis
- 560x660x1145mm (WxLxH)



CAPACITY (L)	60.0	WEIGHT (KG)	33.0
POWER CORD (M)	10.0	POWER (Volts AC/Hz)	230 / 50/60
MOTOR (W)	1000x2	CLEANING RANGE (M)	26.8
SUCTION H ₂ O (MM)	2400	KIT (See page 32)	BA5

NTT2003

- Triplex power head in all-steel construction
- Mounted on an all-steel heavy-duty chassis, easily demounted for emptying
- 560x660x1075mm (WxLxH)



CAPACITY (L)	60.0	WEIGHT (KG)	36.0
POWER CORD (M)	10.0	POWER (Volts AC/Hz)	230 / 50/60
MOTOR (W)	1000x3	CLEANING RANGE (M)	26.8
SUCTION H ₂ O (MM)	2400	KIT (See page 32)	BA5

Anti-Static

HAS750

- H13 (EN1822)
- Full anti-static specification in machine and accessories
- The non-conductive specification continually discharges the static build up during use
- 510x510x960mm (WxLxH)



CAPACITY (L)	35.0	WEIGHT (KG)	23.0
POWER CORD (M)	8.5	POWER (Volts AC/Hz)	230 / 50/60
MOTOR (W)	960	CLEANING RANGE (M)	25.6
SUCTION H ₂ O (MM)	2500	KIT (See page 33)	HAS

DustCare Range

NES570/A NED570/A

- Optional Auto Operation Power Outlet Socket
- Low flow and bag full indicator
- High-efficiency internal AirFlo system
- 415x415x645mm (WxLxH)



CAPACITY (L)	23.0	WEIGHT (KG) NES570	18.0
POWER CORD (M)	10.0	WEIGHT (KG) NED570	20.0
MOTOR (W) NES570	620	POWER (Volts AC/Hz)	230 / 50/60
MOTOR (W) NED570	620x2	CLEANING RANGE (M)	26.8
SUCTION H ₂ O (MM)	2300	KIT (See page 33)	BB5
POWER OUTLET SOCKET (OPTIONAL)	NES570A NED570A		



NES900/A NED900/A

- Optional Auto Operation Power Outlet Socket
- Low flow and bag full indicator
- High-efficiency internal AirFlo system
- 490x800x880mm (WxLxH)

CAPACITY (L)	40.0	WEIGHT (KG) NES900	27.0
POWER CORD (M)	10.0	WEIGHT (KG) NED900	29.0
MOTOR (W) NES900	620	POWER (Volts AC / Hz)	230 / 50/60
MOTOR (W) NED900	620x2	CLEANING RANGE (M)	26.8
SUCTION H ₂ O (MM)	2300	KIT (See page 33)	BB5
POWER OUTLET SOCKET (OPTIONAL)	NES900A NED900A		

TradeLine Range



TEL390S

- L-Class Compliant - IEC/EN 60335-2-69
- Huge cleaning reach, with 10m cable and 2.9m hose
- Large rear wheels for ease of transit
- Tough, durable and built to last
- 400x450x600mm (WxLxH)



CAPACITY (L)	18.0	WEIGHT (KG)	10.8
POWER CORD (M)	10.0	POWER (Volts AC/Hz)	230 / 50/60
MOTOR (W)	620	CLEANING RANGE (M)	28.0
SUCTION H ₂ O (MM)	2300	KIT (See page 32)	AS10



TEM390A

- M-Class Compliant - IEC/EN 60335-2-69
- Huge cleaning reach, with 10m cable and 2.9m hose
- Large rear wheels and extending pull handle for ease of transit
- 2200W Automatic power take-off
- 400x450x1010mm (WxLxH)



CAPACITY (L)	18.0	WEIGHT (KG)	14.3
POWER CORD (M)	10.0	POWER (Volts AC/Hz)	230 / 50/60
MOTOR (W)	620	CLEANING RANGE (M)	28.0
SUCTION H ₂ O (MM)	2300	KIT (See page 32)	AS10

L, M or H-Class

What type of vacuum extractor do you need?

	General dust, mixed dust, gypsum
	Soft / hardwood, silica, masonry, paint, plastic, ceramic
	Asbestos

For guidance only. Find out more at www.hse.gov.uk/construction

H-Class Range



HZ370

- H-Class Compliant - IEC/EN 60335-2-69
- TriTex filtration and HepaFlo filter bags
- Compact and ready to go
- Powerful, long-life 960W motor
- 355x355x570mm (WxLxH)

CAPACITY (L)	15.0	WEIGHT (KG)	11.0
POWER CORD (M)	10.0	POWER (Volts AC/Hz)	230 / 50/60
MOTOR (W)	960	CLEANING RANGE (M)	26.8
SUCTION H ₂ O (MM)	2500	KIT (See page 32)	AA18



HZ390L / S

- H-Class Compliant - IEC/EN 60335-2-69
- TriTex filtration and HepaFlo filter bags
- Compact and ready to go
- Large rear wheels and pull handle
- Powerful, long-life 960W motor
- 400x450x600mm (WxLxH)

CAPACITY (L)	18.0	WEIGHT (KG)	S11.2 / L12.6
POWER CORD (M)	10.0	POWER (Volts AC/Hz)	230 / 50/60
MOTOR (W)	960	CLEANING RANGE (M)	26.8
SUCTION H ₂ O (MM)	2500	KIT (See page 32)	AA18

Extending Pull Handle (HZ390L)



HZ570 / HZD570

- H-Class Compliant - IEC/EN 60335-2-69
- All-steel head construction
- Plugged easy cable replacement system
- 415x415x746mm (WxLxH)

CAPACITY (L)	23.0	WEIGHT (KG) HZ570	18.0
POWER CORD (M)	10.0	WEIGHT (KG) HZD570	20.0
MOTOR (W) HZ570	960	POWER (Volts AC/Hz)	230 / 50/60
MOTOR (W) HZD570	960x2	CLEANING RANGE (M)	26.8
SUCTION H ₂ O (MM)	2500	KIT (See page 32 & 33)	HZ570 - AA19 HZD570 - BB19



Easy Lift Out Disposable Cartridge



HZ900 / HZD900

- H-Class Compliant - IEC/EN 60335-2-69
- All-steel head construction
- Plugged easy cable replacement system
- 490x800x880mm (WxLxH)

CAPACITY (L)	40.0	WEIGHT (KG) HZ900	28.0
POWER CORD (M)	10.0	WEIGHT (KG) HZD900	30.0
MOTOR (W) HZ900	960	POWER (Volts AC/Hz)	230 / 50/60
MOTOR (W) HZD900	960x2	CLEANING RANGE (M)	26.8
SUCTION H ₂ O (MM)	2500	KIT (See page 32 & 33)	HZ900 - AA20 HZD900 - BB20



HZC390L / S

- H-Class Compliant - IEC/EN 60335-2-69
- Disposable filter cartridge
- Quick, simple and safe emptying
- Compact and ready to go
- HZ390S 400x450x600mm
- HZ390L 400x450x1010mm (WxLxH)

CAPACITY (L)	13.0	WEIGHT (KG)	S12.2 / L13.0
POWER CORD (M)	10.0	POWER (Volts AC/Hz)	230 / 50/60
MOTOR (W)	1000	CLEANING RANGE (M)	26.8
SUCTION H ₂ O (MM)	2500	KIT (See page 32)	AA16

Extending Pull Handle (HZC390L)

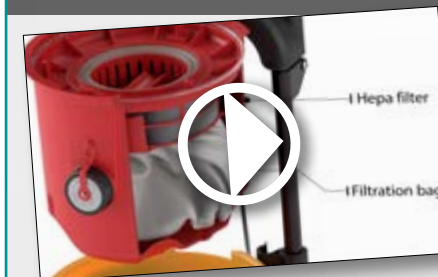
HZC Disposable Cartridge

- HEPA H13 Filter - Conforms to EN1822
- Fits all HZC machines
- 345x321x283mm (WxLxH)

CAPACITY (L)	13.0	WEIGHT (KG)	1.75
--------------	------	-------------	------

HZC Cartridge

All dust is safely contained within a sealed, HEPA H13 filter cartridge, so you can breathe easy.



Watch the full video at: numatic.com

AS10 908283



601008	Stainless Steel Extension Tube (x2)	601430	290mm FreeFlo Floor Tool	601145	150mm Upholstery Tool
601052	Stainless Steel Tube Bend with NPC Volume Control	601141	Double Taper Hose / Tool Adaptor	601146	150mm Slide-on Brush for Upholstery Tool
601102	2.9m NuFlex Threaded Hose	601142	240mm Crevice Tool	601176	Multi Size Power Tool Adaptor
900918	300mm MultiFlo Dry Brush Tool	601144	65mm Soft Dusting Brush		

AA16 909539



601101	2.4m NuFlex Threaded Hose	602159	38 / 32mm Adaptor	601917	280mm Stainless Steel Gulper / Scraper Tool (32mm)
601142	240mm Crevice Tool	601144	65mm Soft Dusting Brush		
602161	152mm Rubber Brush with Soft Bristles	601141	Double Taper Hose / Tool Adaptor		

AA18 902756



601101	2.4m NuFlex Threaded Hose	602159	38 / 32mm Adaptor	601917	280mm Stainless Steel Gulper / Scraper Tool (32mm)
604016	10 x (NVM-2BH) HepaFlo Dust Bags	601144	65mm Soft Dusting Brush	604165	TriTex Filter for 305mm Machine
601142	240mm Crevice Tool	908229	Roll of 10 x 120L Waste Bags (700mm x 1100mm), Grey		
602161	152mm Rubber Brush with Soft Bristles	601141	Double Taper Hose / Tool Adaptor		

AA19 902757 / AA20 902758



601101	2.4m NuFlex Threaded Hose	602161	152mm Rubber Brush with Soft Bristles	601141	Double Taper Hose / Tool Adaptor
604017	10 x (NVM-3BH) HepaFlo Dust Bags (AA19 only HZ570)	602159	38 / 32mm Adaptor	601917	280mm Stainless Steel Gulper / Scraper Tool (32mm)
604019	10 x (NVM-4BH) HepaFlo Dust Bags (AA20 only HZ900)	601144	65mm Soft Dusting Brush	604116	Primary PermaTex Filter for 356mm Machine
601142	240mm Crevice Tool	908229	Roll of 10 x 120L Waste Bags (700mm x 1100mm), Grey		

BA5 607167



602102	2.4m NuFlex Threaded Hose (38mm)	602930	Aluminium Extension Tube (x2)	602162	152mm Rubber Brush with Stiff Bristles
602931	Aluminium Tube Bend	602381	400mm ProFlo Brush Tool		

BB5 607335



602102	2.4m NuFlex Threaded Hose (38mm)	602920	Stainless Steel Extension Tube (x2)	602162	152mm Rubber Brush with Stiff Bristles
602919	Stainless Steel Tube Bend	602381	400mm ProFlo Brush Tool		

BB19 607349 / BB20 607350



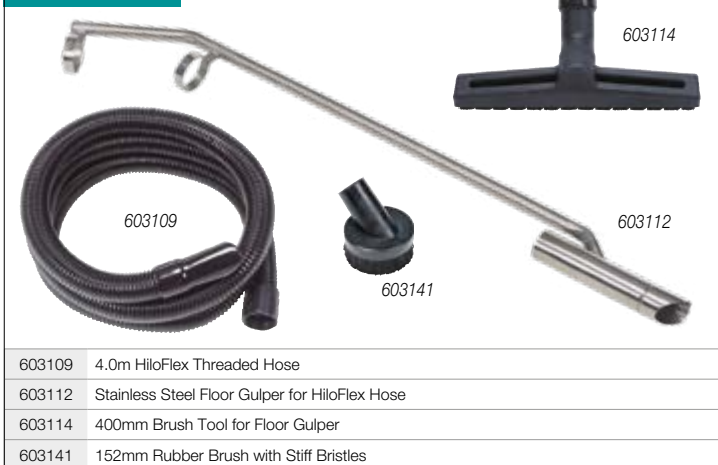
602102	2.4m NuFlex Threaded Hose	604144	65mm Soft Dusting Brush	604116	Primary PermaTex Filter for 356mm Machine
604017	10 x (NVM-3BH) HepaFlo Dust Bags (BB19 only HZD570)	908229	Roll of 10 x 120L Waste Bags (700mm x 1100mm), Grey	602159	38 / 32mm Adaptor
604019	10 x (NVM-4BH) HepaFlo Dust Bags (BB20 only HZD900)	602160	305mm ABS Crevice Tool		
602161	152mm Rubber Brush with Soft Bristles	602923	280mm Stainless Steel Gulper / Scraper Tool (38mm)		

HAS 607661



602111	2.6m Anti Static 38mm Hose Assembly	602929	ATX Stainless Steel Extension Tube (x2)	604019	10 x (NVB-4BH) HepaFlo Dust Bags
602112	ATX 400mm Widetrack Brush Tool	909185	Conductive Dusting Brush	602923	280mm Stainless Steel Gulper / Scraper Tool (38mm)
602919	Stainless Steel Tube Bend	602125	ATX 130mm Conductive Rubber Gulper Tool	908229	Roll of 10 x 120L Waste Bags (700mm x 1100mm), Grey

C14 607384



603109	4.0m HiloFlex Threaded Hose	603114	400mm Brush Tool for Floor Gulper
603112	Stainless Steel Floor Gulper for HiloFlex Hose	603141	152mm Rubber Brush with Stiff Bristles

G1 607701



608001	3.0m HiloFlex Hose	608027	Black Floor Gulper Tool
--------	--------------------	--------	-------------------------

FloorCare

Providing **innovative, reliable** and **effective floorcare solutions**, in even the most demanding environments.



FloorCare Contents

Hurricane / NuSpeed Range	36
TwinTec Mains	37
TwinTec Battery	38-39
Compact Ride-on	40
Ride-on	40
Nu-Assist	41



The 244NX Compact Scrubber Dryer reduces labour costs by 70% and water use by 80%.*

See page 38 for details.

*Time saving of 70% vs mopping / wage £11 per hour. 100sqm 7 days per week. Water use by 80% based on replacing 16L mopping system, cleaning 7 days per week.

Hurricane Range

HFM1015G
 • Fully adjustable handle
 • Optional solution tank
 • 460x560x1250mm (WxLxH)

Brush Speed **150**rpm
 • Scrubbing



TANK CAPACITY (L)	10.0	BRUSH SPEED (RPM)	150
MOTOR (W)	1000	NET WEIGHT (KG)	26.0
DECK (MM)	450	POWER (Volts AC/Hz)	230 / 50
BRUSH (MM)	450	VACUUM (DRY)	Optional
PAD (MM)	400	CLEANING RANGE (M)	32.0

HFM1515G
 • Fully adjustable handle
 • Optional solution tank
 • Optional 10kg weight
 • 460x560x1250mm (WxLxH)

Brush Speed **150**rpm
 • Scrubbing



TANK CAPACITY (L)	10.0	BRUSH SPEED (RPM)	150
MOTOR (W)	1500	NET WEIGHT (KG)	32.0
DECK (MM)	450	POWER (Volts AC/Hz)	230 / 50
BRUSH (MM)	450	VACUUM (DRY)	Optional
PAD (MM)	400	CLEANING RANGE (M)	32.0

HFM1523G
 • Fully adjustable handle
 • Optional solution tank
 • Optional 10kg weight
 • 460x560x1250mm (WxLxH)

Brush Speed **230**rpm
 • General Purpose



TANK CAPACITY (L)	10.0	BRUSH SPEED (RPM)	230
MOTOR (W)	1500	NET WEIGHT (KG)	32.0
DECK (MM)	450	POWER (Volts AC/Hz)	230 / 50
BRUSH (MM)	450	VACUUM (DRY)	Optional
PAD (MM)	400	CLEANING RANGE (M)	32.0

HFM1530G
 • Fully adjustable handle
 • Optional solution tank
 • Optional 10kg weight
 • 460x560x1250mm (WxLxH)

Brush Speed **300**rpm
 • Polishing



TANK CAPACITY (L)	10.0	BRUSH SPEED (RPM)	300
MOTOR (W)	1500	NET WEIGHT (KG)	32.0
DECK (MM)	450	POWER (Volts AC/Hz)	230 / 50
BRUSH (MM)	450	VACUUM (DRY)	Optional
PAD (MM)	400	CLEANING RANGE (M)	32.0

TwinTec Mains

TT1535G
 • Compact yet exceptionally manoeuvrable
 • Cylinder Power Brush
 • Picks-up forwards and backwards
 • Simple controls
 • Fully adjustable handle
 • 480x750x740mm (WxLxH)

Brush Width **350**mm
 Tank Capacity **15**L



TANK CAPACITY (L)	15.0	BRUSH SPEED (RPM)	1000
BRUSH MOTOR (W)	400	NET WEIGHT (KG)	38.0
VAC MOTOR (W)	1000	POWER (Volts AC / Hz)	230 / 50
BRUSH (MM)	350	CLEANING RANGE (M)	42.0

TT1840G
 • Simple controls
 • Fully adjustable handle
 • Folds flat for easy storage
 • Fast, single handed brush / pad changing
 • 520x880x1132mm (WxLxH)

Brush Width **400**mm
 Tank Capacity **18**L



TANK CAPACITY (L)	18.0	PAD (MM)	360
BRUSH MOTOR (W)	400	BRUSH SPEED (RPM)	150
VAC MOTOR (W)	300	NET WEIGHT (KG)	38.5
DECK (MM)	400	POWER (Volts AC / Hz)	230 / 50
BRUSH (MM)	400	CLEANING RANGE (M)	42.0

TT4045G
 • Simple controls
 • Fully adjustable handle
 • Tilting deck for easy brush / pad change
 • 470x890x1100mm (WxLxH)

Brush Width **450**mm
 Tank Capacity **40**L



TANK CAPACITY (L)	40.0	PAD (MM)	400
BRUSH MOTOR (W)	1500	BRUSH SPEED (RPM)	150
VAC MOTOR (W)	1200	NET WEIGHT (KG)	67.0
DECK (MM)	450	POWER (Volts AC / Hz)	230 / 50
BRUSH (MM)	450	CLEANING RANGE (M)	42.0

We've got floors covered
 Which machine is best for you?

Lightweight
 A light commercial or domestic machine. Suited to the non-professional cleaner. Perfect for a variety of flooring options, including vinyl, slate, limestone and quarry tiles.

Scrubbing
 Professional use machines for a range of deep-cleaning situations in leisure, industry and floor maintenance.

General Purpose
 Medium speed machines for a variety of uses and floor types. Lighter scrubbing and polishing on vinyl, stone and wood.

HFM1545G
 • Fully adjustable handle
 • Optional solution tank
 • Optional 10kg weight
 • 460x560x1250mm (WxLxH)

Brush Speed **450**rpm
 • Polishing



TANK CAPACITY (L)	10.0	BRUSH SPEED (RPM)	450
MOTOR (W)	1500	NET WEIGHT (KG)	32.0
DECK (MM)	450	POWER (Volts AC/Hz)	230 / 50
BRUSH (MM)	450	VACUUM (DRY)	Optional
PAD (MM)	400	CLEANING RANGE (M)	32.0

HFT1530G
 • Fully adjustable handle
 • Optional solution tank
 • Dual speed for scrubbing (150rpm) and polishing (300rpm)
 • Optional 10kg weight (150rpm)
 • 460x560x1250mm (WxLxH)

Brush **150/Speed 300**rpm
 • Scrubbing
 • Polishing



TANK CAPACITY (L)	10.0	BRUSH SPEED (RPM)	150 / 300
MOTOR (W)	1000 / 1250	NET WEIGHT (KG)	32.0
DECK (MM)	450	POWER (Volts AC/Hz)	230 / 50/60
BRUSH (MM)	450	VACUUM (DRY)	Optional
PAD (MM)	400	CLEANING RANGE (M)	32.0

HNS1550G
 • Fully adjustable handle
 • High-speed burnisher
 • Simple load adjustment
 • 560x740x1260mm (WxLxH)

Brush Speed **1500**rpm
 • Burnishing



TANK CAPACITY (L)	-	PAD PRESSURE	Variable
MOTOR (W)	1500	NET WEIGHT (KG)	35.0
DECK (MM)	500	POWER (Volts AC/Hz)	230 / 50
PAD (MM)	500	VACUUM (DRY)	Optional
BRUSH SPEED (RPM)	1500	CLEANING RANGE (M)	32.0

TT4055G
 • Simple controls
 • Fully adjustable handle
 • Tilting deck for easy brush / pad change
 • 560x935x1100mm (WxLxH)

Brush Width **550**mm
 Tank Capacity **40**L



TANK CAPACITY (L)	40.0	PAD (MM)	500
BRUSH MOTOR (W)	1500	BRUSH SPEED (RPM)	150
VAC MOTOR (W)	1200	NET WEIGHT (KG)	68.0
DECK (MM)	550	POWER (Volts AC / Hz)	230 / 50
BRUSH (MM)	550	CLEANING RANGE (M)	42.0

TT6650G
 • Simple controls
 • Fully adjustable handle
 • Tilting deck for easy brush / pad change
 • 970x1260x1230mm (WxLxH)

Brush Width **650**mm
 Tank Capacity **60**L



TANK CAPACITY (L)	60.0	PAD (MM)	600
BRUSH MOTOR (W)	1500	BRUSH SPEED (RPM)	150
VAC MOTOR (W)	1200	NET WEIGHT (KG)	87.6
DECK (MM)	650	POWER (Volts AC / Hz)	230 / 50
BRUSH (MM)	650	CLEANING RANGE (M)	42.0

Tilting Deck
 Quick, easy and simple brush and pad change.



Easily fit a wide range of brushes, pads and drive boards with the handy tilting deck system, meaning less down time and more time to clean.

NuSpeed Range

NLL332
 • Optional solution tank
 • Folds flat for easy storage
 • Full range of 330mm brushes / pads
 • 330x540x1145mm (WxLxH)

Brush Speed **200**rpm
 • Lightweight
 • General Purpose



TANK CAPACITY (L)	4.0	BRUSH SPEED (RPM)	200
MOTOR (W)	400	NET WEIGHT (KG)	18.0
DECK (MM)	330	POWER (Volts AC / Hz)	230 / 50
BRUSH (MM)	330	CLEANING RANGE (M)	32.0
PAD (MM)	330		

NLL415
 • Optional solution tank
 • Folds flat for easy storage
 • Full range of 400mm / 360mm brushes / pads
 • 360x540x1145mm (WxLxH)

Brush Speed **150**rpm
 • Lightweight
 • General Purpose



TANK CAPACITY (L)	4.0	BRUSH SPEED (RPM)	150
MOTOR (W)	400	NET WEIGHT (KG)	18.5
DECK (MM)	400	POWER (Volts AC / Hz)	230 / 50
BRUSH (MM)	400	CLEANING RANGE (M)	32.0
PAD (MM)	360		

NR1500S
 • Optional solution tank
 • Folds flat for easy storage
 • 460x580x1250mm (WxLxH)

Brush Speed **150**rpm
 • Heavy Duty Scrubbing



TANK CAPACITY (L)	6.0	BRUSH SPEED (RPM)	150
MOTOR (W)	1500	NET WEIGHT (KG)	40.0
DECK (MM)	450	POWER (Volts AC / Hz)	230 / 50/60
BRUSH (MM)	450	VACUUM (DRY)	Optional
PAD (MM)	400	CLEANING RANGE (M)	32.0

Look out for the logo to make sure you're getting a...

GENUINE
Numatic
PART

TwinTec Battery

- Fast • Effective • Clean

Agile and lightweight handling easily navigates obstacles and congested areas, gliding over floors for controlled, effortless cleaning. The 244NX is lightweight and easy to use, leaving floors clean, dry and safe whilst reducing labour costs by 70% and water use by 80%.



NEW

244NX

- Easy to use controls
- Easily removable tanks
- Fully adjustable handle
- Part of NX300 Pro Cordless Network
- 520x450x1200mm (WxLxH)

Brush Speed **140**rpm
Tank Capacity **2.2**L



TANK CAPACITY (L)	2.2	PAD (MM)	2x220
RECOVERY TANK (L)	3	BRUSH SPEED (RPM)	140
BRUSH MOTOR (W)	2x200	NET WEIGHT (KG)	21.3
VAC MOTOR (W)	100	POWER (Volts)	36
DECK (MM)	440	RUNTIME (MINS)	Up to 80
BRUSH (MM)	2x220		

Watch the full video at:
numatic.com/244NX

TTB1840NX

- 60mins runtime
- 1 hour fast charge
- Part of NX300 Pro Cordless Network
- Simple controls
- Fully adjustable handle
- Folds flat for easy storage
- 520x850x1132mm (WxLxH)

Brush Width **400**mm
Tank Capacity **18**L



TANK CAPACITY (L)	18.0	BRUSH SPEED (RPM)	150
BRUSH MOTOR (W)	175	NET WEIGHT (KG)	34.0
VAC MOTOR (W)	100	POWER (V)	36
DECK (MM)	400	RUNTIME (HR)	1
BRUSH (MM)	400	RECHARGE TIME (HR)	1 - 80% / 2 - 100%
PAD (MM)	360		

Numatic X-Change

The NX300 battery packs can be used across the growing Pro Cordless Network.



numatic.com/NX300

Independently rated the **UK's most reliable** vacuum brand



The 3045 is where it all started. It has been a leader for over 20 years and offers the best of both worlds with compact design and a full width cleaning capability.



HENRY HGB3045

- Easy to use controls
- Battery & hour meter
- Fully adjustable handle
- Tilting deck for easy brush / pad change
- 470x890x1100mm (WxLxH)

Brush Speed **100**rpm
Tank Capacity **30**L



TANK CAPACITY (L)	30.0	PAD (MM)	400
BRUSH MOTOR (W)	300	BRUSH SPEED (RPM)	100
VAC MOTOR (W)	400	NET WEIGHT (KG)	90.0
DECK (MM)	450	POWER (24 Volts / Ah)	2x12 / 55
BRUSH (MM)	450	RUNTIME (HRS)	1.5

TGB3045

- Easy to use controls
- On-board charging
- Battery & hour meter
- Fully adjustable handle
- Tilting deck for easy brush / pad change
- 470x890x1100mm (WxLxH)

Brush Width **450**mm
Tank Capacity **30**L



TANK CAPACITY (L)	30.0	PAD (MM)	400
BRUSH MOTOR (W)	300	BRUSH SPEED (RPM)	100
VAC MOTOR (W)	400	NET WEIGHT (KG)	90.0
DECK (MM)	450	POWER (24 Volts / Ah)	2x12 / 55
BRUSH (MM)	450	RUNTIME (HRS)	1.5

TGB4045

- Easy to use controls
- On-board charging
- Battery and hour meter
- Fully adjustable handle
- Tilting deck for easy brush / pad change
- 470x1070x1160mm (WxLxH)

Brush Width **450**mm
Tank Capacity **40**L



TANK CAPACITY (L)	40.0	PAD (MM)	400
BRUSH MOTOR (W)	300	BRUSH SPEED (RPM)	100
VAC MOTOR (W)	400	NET WEIGHT (KG)	128.0
DECK (MM)	450	POWER (24 Volts / Ah)	2x12 / 100
BRUSH (MM)	450	RUNTIME (HRS)	2.25

TGB4055 / TGB4055T

- Easy to use controls
- On-board charging
- Battery and hour meter
- Traction drive makes cleaning inclines safer & easier (Traction model only)
- Fully adjustable handle
- Tilting deck for easy brush / pad change
- 560x1115x1160mm (WxLxH)

Brush Width **550**mm
Tank Capacity **40**L



TANK CAPACITY (L)	40.0	BRUSH SPEED (RPM)	100
BRUSH MOTOR (W)	300	NET WEIGHT (KG) 4055	129.5
VAC MOTOR (W)	400	NET WEIGHT (KG) 4055T	139.5
TRACTION DRIVE (W)	250	POWER (24 Volts / Ah)	2x12 / 100
DECK (MM)	550	RUNTIME (HRS) 4055	2.25
BRUSH (MM)	550	RUNTIME (HRS) 4055T	2.25
PAD (MM)	508		

Sustainable Cleaning

Our Centrifugal Water System ensures precise distribution across the brush or pad, delivering on cleaning performance whilst saving water.



TGB6055 / TGB6055T

- Easy to use controls
- On-board charging
- Battery and hour meter
- Traction drive makes cleaning inclines safer & easier (Traction model only)
- Drive speed 0-4kph
- 560x1425x1120mm (WxLxH)

Brush Width **550**mm
Tank Capacity **60**L



TANK CAPACITY (L)	60.0	BRUSH SPEED (RPM)	100
BRUSH MOTOR (W)	300	NET WEIGHT (KG) 6055	165.0
VAC MOTOR (W)	400	NET WEIGHT (KG) 6055T	172.5
DECK (MM)	550	POWER (24 Volts / Ah)	2x12 / 100
BRUSH (MM)	550	RUNTIME (HRS)	2.25
PAD (MM)	508		

TGB8572T

- Easy to use controls
- Traction drive makes cleaning inclines safer & easier
- On-board charging
- Battery & hour meter
- Drive speed 0-4kph
- 762x1513x1144mm (WxLxH)

Brush Width **370**x2mm
Tank Capacity **85**L



TANK CAPACITY (L)	85.0	PAD (MM)	2x360
BRUSH MOTOR (W)	600	BRUSH SPEED (RPM)	150
VAC MOTOR (W) (24V)	400	NET WEIGHT (KG)	270.0
DECK (MM)	720	POWER (24 Volts / Ah)	4x12 / 200
BRUSH (MM)	2x370	RUNTIME (HRS)	5

FloorCare Servicing & Support

We believe cleaning floors should be simple, it's about having the right equipment and right support.

Simple cleaning, complete support.

- Site Survey
- On-site Demo
- Installation and Training
- Servicing, Breakdown and Health Checks
- Digital Training, Maintenance and Guides
- Refresher Operator Training



Compact Ride-on

CRG8055 - 100Ah / 120Ah

- Compact design
- Single brush 550mm scrub width
- On-board charging
- Drive speed 0-6kph
- Anti-tip system
- 805x1460x1160mm (WxLxH)



Brush Width **550mm**
Tank Capacity **80L**

TANK CAPACITY (L)	80.0
BRUSH MOTOR (W)	600
VAC MOTOR (W)	400
DECK (MM)	550
BRUSH (MM)	550
PAD (MM)	508
BRUSH SPEED (RPM)	150
NET WEIGHT (KG) 100 Ah	188.0
NET WEIGHT (KG) 200 Ah	200.0
POWER (24 Volts / Ah)	2x12 / 100 / 120
RUNTIME (HRS) 100Ah	2
RUNTIME (HRS) 120Ah	3

CRG8072 - 100Ah / 120Ah

- Compact design
- Twin brushes 720mm scrub width
- Anti-tip system
- On-board charging
- Drive speed 0-6kph
- 948x1460x1160mm (WxLxH)



Brush Width **370x2mm**
Tank Capacity **80L**

TANK CAPACITY (L)	80.0
BRUSH MOTOR (W)	600
VAC MOTOR (W)	400
DECK (MM)	720
BRUSH (MM)	2x370
PAD (MM)	2x360
BRUSH SPEED (RPM)	150
NET WEIGHT (KG) 100Ah	208.0
NET WEIGHT (KG) 120Ah	220.0
POWER (24 Volts / Ah)	2x12 / 100 / 120
RUNTIME (HRS) 100Ah	2
RUNTIME (HRS) 120Ah	3

Ride-on

TRG720 - 200Ah / 300Ah

- Simple operator controls
- Twin brushes 720mm scrub width
- Easy maintenance
- On-board charging
- Drive speed 0-6kph
- 948x1752x1385mm (WxLxH)



Brush Width **370x2mm**
Tank Capacity **120L**

TANK CAPACITY (L)	120.0
BRUSH MOTOR (W)	600
VAC MOTOR (W)	400 / 600
DECK (MM)	720
BRUSH (MM)	2x370
PAD (MM)	2x360
BRUSH SPEED (RPM)	150
NET WEIGHT (KG) 200 Ah	357.0
NET WEIGHT (KG) 300 Ah	422.0
POWER (24 Volts / Ah)	4x12 / 200
POWER (24 Volts / Ah)	6x12 / 300
RUNTIME (HRS) 200Ah	3.5
RUNTIME (HRS) 300Ah	5.5

TTV678G - 300Ah / 400Ah

- Simple operator controls
- 3 adjustable brush widths (650 / 750 / 850mm)
- Easy maintenance
- On-board charging
- Drive speed 0-7kph
- 1054x1676x1425mm (WxLxH)



Brush Width **300x3mm**
Tank Capacity **120L**

TANK CAPACITY (L)	120.0
BRUSH MOTOR (W)	3x400
VAC MOTOR (W)	600
DECK (MM)	600
BRUSH (MM)	3x300
PAD (MM)	3x300
BRUSH SPEED (RPM)	50 / 100 / 150 / 200
NET WEIGHT (KG) 300Ah	620.0
NET WEIGHT (KG) 400Ah	686.0
POWER (24 Volts / Ah)	6x12 / 300
POWER (24 Volts / Ah)	8x12 / 400
RUNTIME (HRS) 300Ah	3.5
RUNTIME (HRS) 400Ah	4.5

Nu-Assist

Providing training is not always straightforward and can be time-consuming, complex and costly.

The Nu-Assist App offers the benefit of online training, through a simple, versatile, and user-friendly solution, resulting in increased cleaning performance and productivity.

Multilingual Support

With Nu-Assist on-hand, you and your team have 24/7 access to multilingual training, troubleshooting and maintenance content from any mobile device, increasing cleaning productivity across the board.



Download the App



Nu-Assist delivers multilingual training, troubleshooting and maintenance content, from one convenient App.



How it works

1. Scan the QR Code on the Machine
2. Open in App or Mobile Browser
3. View Quick Start Videos
4. Carry Out Maintenance Checklist
5. Complete Operator Training



Visit: numatic.com/apps/nu-assist

VersaCare

Raising cleaning standards and productivity with **versatility, innovation and quality.**



VersaCare Contents

ECO-Matic Range	44-45
SERVO-Matic Range	46-47
PRO-Matic Range	48-52
Nu-Design	53
Mopping Range	54-55
Carousel Range	56
NuBag Range	57
NuKeeper Range / Top Tray Kits	58-60
Optional End Bag Frame Kits	61



Numatic ReFlo
TECHNOLOGY

The ECO-Matic trolley range delivers our best value cleaning system.

See page 44-45 for details.



* Stated figure represents maximum use of recycled plastic in ReFlo Janitorial range, not including kits and accessories.

ECO-Matic Trolley Range

Sustainably engineered using the highest quality recycled plastic, each model in the ECO-Matic range benefits from 100% Structofoam construction, making it tough, easy to clean, and built to last.

Designed for enhanced usability, productivity and simplicity, ECO-Matic offers a choice of 6 models to suit any cleaning task or environment.

- Best value cleaning system
- 100% Structofoam construction
- Assembly in under 15 minutes
- Compact and easy to store
- Industry colour-coding for effective infection control
- Environmentally sustainable, ReFlo Technology using the highest quality recycled plastic



EM1

- Waste 120L / 2x70L
- Shelf Storage
- Castors: 4 x 100mm
- 4 x Kit Options: SRK14 / 20 / 21 / 22
- Optional SprayMop
- Wall and Door Protection
- 545x900x1000mm (WxLxH)



EM2

- Waste 120L / 2x70L
- 2 x Deep Storage Drawers
- Castors: 4 x 100mm
- 4 x Kit Options: SRK14 / 20 / 21 / 22
- Optional SprayMop
- Optional Lockable Drawers
- Wall and Door Protection
- 545x900x1000mm (WxLxH)



EM3

- Waste 120L / 2x70L
- Shelf Storage
- Castors: 4 x 100mm
- 6 x Kit Options: SRK15 / 16 / 19 / 20 / 21 / 22
- Wall and Door Protection
- 545x1160x1000mm (WxLxH)



EM4

- Waste 2x120L / 4x70L
- Shelf Storage
- Castors: 4 x 100mm
- 3 x Kit Options: SRK20 / 21 / 22
- Wall and Door Protection
- 545x1230x1000mm (WxLxH)



EM5

- Waste 120L / 2x70L
- 2 x Deep Storage Drawers
- Castors: 4 x 100mm
- 6 x Kit Options: SRK15 / 16 / 19 / 20 / 21 / 22
- Optional Lockable Drawers
- Wall and Door Protection
- 545x1160x1000mm (WxLxH)



EM6

- Waste 2x120L / 4x70L
- 2 x Deep Storage Drawers
- Castors: 4 x 100mm
- Optional Lockable Drawers
- 3 x Kit Options: SRK20 / 21 / 22
- Wall and Door Protection
- 545x1230x1000mm (WxLxH)



Mop Kits



- KIT SRK14**
- 1 x 18L Blue Handle Bucket, Grey
 - C/W Dolly Mop Basket
 - Used on: EM1 / EM2



- KIT SRK15**
- 1 x 34L Blue Handle Bucket, Grey
 - C/W Dolly Mop Basket
 - Used on: EM3 / EM5

KIT SRK16 / SRK16K

- Vertical Press available with Foam Insert for Flat Mops or without Foam Insert for Kentucky Mops
- 1 x 17L Red Handle Bucket, Grey
- 1 x 17L Blue Handle Bucket, Grey
- Used on: EM3 / EM5



- KIT SRK19 Bag Frame Kit**
- 1 x ReFlo Bag Frame with Fixing Screws
 - 1 x ReFlo Bag Securing Frame
 - 1 x Grey Lid
 - C/W Colour-coded Discs
 - Used on EM3 / EM5



- KIT SRK20**
- Rear Wheel Assembly
 - Used on: EM1 / 2 / 3 / 4 / 5 / 6



- KIT SRK21**
- 4 x 5L Swing Pails
 - 5L Swing Pail Handle, Red / Blue / Green / Yellow
 - Used on EM1 / 2 / 3 / 4 / 5 / 6



- KIT SRK22**
- 2 x 10L Buckets, Grey
 - 10L Bucket Handle, Red / Blue
 - Used on EM1 / 2 / 3 / 4 / 5 / 6



- Mop Handle Clips**
- 4 x Tool Clips (Also available in packs of 10)
 - Used on: EM1 / 2 / 3 / 4 / 5 / 6



- Mop Support Kit**
- 1 x Mop Support for On-board Mop Storage
 - Used on: EM1 / 2 / 3 / 4 / 5 / 6



- Zipped Laundry Bag**
- 1 x Zipped Laundry Bag
 - Used on: EM1 / 2 / 3 / 4 / 5 / 6

Wet Floor Sign

- Wet Floor Sign Assembly, Yellow, English
- Used on: EM1 / 2 / 3 / 4 / 5 / 6



Eco-Matic Bag Splitter Kit

- 1 x Bag Splitter with Fixing Screws for Dual Waste
- 1 x Bag Trapper Extrusion
- C/W Bags
- C/W Roll of 70L Waste Bags
- C/W Colour-coded Discs
- Used on: EM1 / 2 / 3 / 4 / 5 / 6



EM5 with Kits SRK21 and SRK16 / SRK16K. Consumables for illustration purposes only.

* Stated figure represents maximum use of recycled plastic in ReFlo Janitorial range, not including kits and accessories.

NEW SERVO-Matic Trolley Range

The ultimate cleaning system, offering a choice of 6 base units and a wide range of kits and accessories for limitless configurations.

- Compact and convenient
- 100% Structofoam construction
- Increase cleaning productivity with configurable design
- Industry colour-coding for effective infection control
- Environmentally sustainable, ReFlo Technology using the highest quality recycled plastic



SMX1415 with Kit SRK3 and Kit SRK29 Door Panel Option. Consumables for illustration purposes only.



* Stated figure represents maximum use of recycled plastic in ReFlo Janitorial range, not including kits and accessories.

SM Range



- SM1405**
- Waste 120L / 2 x 70L
 - Optional Castor Sizes: 100 / 125 & Braked
 - 2 x 5L Swing Pails
 - Multiple Kit Options
 - 570x835x970mm (WxLxH)



- SM1415**
- Waste 120L / 2 x 70L
 - Optional Castor Sizes: 100 / 125 / 200 & Braked
 - 2 x 6L Buckets
 - Divided Tray Storage
 - Multiple Kit Options
 - 570x1090x1115mm (WxLxH)



- SM1705**
- Waste 120L / 2 x 70L
 - Optional Castor Sizes: 100 / 125 / 200 & Braked
 - Optional Buckets: 4 x 5L or 2 x 10L
 - Storage Drawer
 - Multiple Kit Options
 - 570x1325x1115mm (WxLxH)

SMX Range



- SMX1405**
- Waste 120L / 2 x 70L
 - Optional Castor Sizes: 100 / 125 & Braked
 - 2 x 5L Swing Pails
 - Multiple Kit Options
 - Bin Surround
 - 570x835x970mm (WxLxH)



- SMX1415**
- Waste 120L / 2 x 70L
 - Optional Castor Sizes: 100 / 125 / 200 & Braked
 - 2 x 6L Buckets
 - Divided Tray Storage
 - Multiple Kit Options
 - Bin Surround
 - 570x1090x1115mm (WxLxH)



- SMX1705**
- Waste 120L / 2 x 70L
 - Optional Castor Sizes: 100 / 125 / 200 & Braked
 - Optional Buckets: 4 x 5L or 2 x 10L
 - Storage Drawer
 - Multiple Kit Options
 - Bin Surround
 - 570x1325x1115mm (WxLxH)

Please note 100mm castors come as standard. If different castors are required, they will arrive in addition.

SERVO-Matic Mop Kits & Accessories



- KIT SRK0 / SRK0K**
- Vertical Press available with / without Foam Insert
 - 1 x 15L Red Handle Bucket, Grey
 - 1 x 15L Blue Handle Bucket, Grey
 - Used on: SM1405 / 1415 / 1705 / SMX1405 / 1415 / 1705



- KIT SRK1 / SRK1K**
- Vertical Press available with / without Foam Insert
 - 1 x 17L Red Handle Bucket, Grey
 - 1 x 17L Blue Handle Bucket, Grey
 - 1 x Bucket Support Tray
 - Used on: SM1405 / 1415 / 1705 / SMX1405 / 1415 / 1705



- KIT SRK2 / SRK2K**
- Vertical Press available with / without Foam Insert
 - 1 x 22L Red Handle Bucket, Grey
 - 1 x 22L Blue Handle Bucket, Grey
 - 1 x Extension Tray
 - Used on: SM1415 / 1705 / SMX1415 / 1705



- KIT SRK3**
- Speedclean Wide Press
 - 1 x 22L Red Handle Bucket, Grey
 - 1 x 22L Blue Handle Bucket, Grey
 - 1 x Extension Tray
 - Used on: SM1415 / 1705 / SMX1415 / 1705



- KIT SRK4**
- 1 x MopMatic2 Bucket, Grey
 - C/W Set of Colour-coded Discs
 - 1 x 22L Red Handle Bucket, Grey
 - 1 x Extension Tray
 - C/W 2.5L Dosing Bottle
 - Used on: SM1415 / 1705 / SMX1415 / 1705



- KIT SRK5**
- 2 x MopMatic2 Bucket, Grey
 - C/W Set of Colour-coded Discs
 - 1 x Extension Tray
 - C/W 2.5L Dosing Bottle
 - Used on: SM1415 / 1705 / SMX1415 / 1705



- KIT SRK6**
- 2 x MopMatic2 Bucket, Grey
 - C/W Set of Colour-coded Discs
 - 1 x 22L Red Handle Bucket, Grey, C/W Lid
 - MopMatic2 Hang-on Frame, Nutex
 - 1 x Extension Tray
 - C/W 2.5L Dosing Bottle
 - Used on: SM1415 / 1705 / SMX1415 / 1705



- KIT SRK62**
- Hood Set
 - Lockable
 - Used on SM1705 / SMX1705



- MidMop Option MMB1616**
- Vertical Press available with / without Foam Insert
 - 510x680x1020mm (WxLxH)
 - Used on: SM1415 / 1705 / SMX1415 / 1705



- KIT SRK26**
- Optional Doors
 - C/W Locks and Hinges
 - Used on: SM1705 / SMX1705



- KIT SRK30**
- Optional Single Door and Back Panel C/W Locks and Hinges
 - Used on: SM1705 / SMX1705



- KIT SRK50 / 51**
- Optional Bin Surround Kit
 - SRK50 Used on: SMX1405
 - SRK51 Used on: SMX1415

- Bag Splitter Kit**
- 1 x Bag Splitter with Fixing Screws for Dual Waste
 - C/W Roll of 70L Waste Bags
 - C/W Colour-coded Discs
 - Used on: SM1405 / 1415 / 1705 / SMX1405 / 1415 / 1705

Customisable Door Panels

- KIT SRK27**
- Door Graphic Set No.1, Happy Cleaning
- KIT SRK28**
- Door Graphic Set No.2, Big Ben
- KIT SRK29**
- Door Graphic Set No.3, Sunflowers



For a personalised door panel with your logo, get in touch today to find out more.



PRO-Matic Trolley Range

The PRO-Matic range offers a 100% configurable cleaning system, increasing operator usability and productivity.

With a choice of 10 base units and a wide-range of kits and accessories, no detail goes unmissed; meeting the precise requirements of any user, in any environment, for any application.

- Increase cleaning productivity with configurable design
- Structofoam and Stainless Steel construction
- Environmentally sustainable, ReFlo Technology uses the highest quality recycled plastic
- Industry colour-coding for effective infection control
- Lockable and closed-away systems for public cleaning



* Stated figure represents maximum use of recycled plastic in ReFlo Janitorial range, not including kits and accessories.



- PM10**
- Waste 120L / 2 x 70L
 - Detachable Wheeled Bin
 - Optional Castors
 - Multiple Kit Options
 - 580x972x1073mm (WxLxH)



- PM20**
- Waste 120L / 2 x 70L
 - Detachable Wheeled Bin
 - Optional Castors
 - Multiple Kit Options
 - Optional Doors
 - Optional Storage Drawers
 - 580x1335x1073mm (WxLxH)



- PM30**
- Waste 120L / 2 x 70L
 - Detachable Wheeled Bin
 - Optional Castors
 - Multiple Kit Options
 - Optional Doors
 - Optional Storage Drawers
 - 580x1700x1073mm (WxLxH)

Numatic Nu-Design

Bespoke Janitorial
Configurable Cleaning Systems
See page 53

PM10 with Kits SRK1S, SRK21, Kentucky Mop and Optional Wet Floor Sign. Consumables for illustration purposes only.



- PM11**
- Waste 120L / 2 x 70L
 - Detachable Wheeled Bin
 - Optional Castors
 - Optional Doors
 - Optional Storage Drawers
 - 580x972x1073mm (WxLxH)



- PM21**
- Waste 120L / 2 x 70L
 - Detachable Wheeled Bin
 - Optional Castors
 - Optional Doors
 - Optional Storage Drawers
 - 580x1335x1073mm (WxLxH)



- PM31**
- Waste 120L / 2 x 70L
 - Detachable Wheeled Bin
 - Optional Castors
 - Optional Doors
 - Optional Storage Drawers
 - 580x1700x1073mm (WxLxH)

Removable Bin Feature
Completely detachable and manoeuvrable swing-out bin for convenient waste removal. Colour-coding options available for effective infection control.



Please note castors do not come as standard. Castors will need to be ordered as an addition.



- PM12**
- Waste 2 x 120L / 4 x 70L
 - Detachable Wheeled Bin
 - Optional Castors
 - 580x972x1073mm (WxLxH)



- PM22**
- Waste 2 x 120L / 4 x 70L
 - Detachable Wheeled Bin
 - Optional Castors
 - Optional Doors
 - Optional Storage Drawers
 - 580x1335x1073mm (WxLxH)



- PM32**
- Waste 2 x 120L / 4 x 70L
 - Detachable Wheeled Bin
 - Optional Castors
 - Optional Doors
 - Optional Storage Drawers
 - 580x1700x1073mm (WxLxH)

PRO-Matic Trolley Range

The PM13 provides a lockable and manoeuvrable solution.

A completely configurable cleaning system with a wide choice of features to suit operator usability and productivity. Ready for anything, always on the go and on-hand wherever you need it.

- Increase cleaning productivity with configurable design
- Structofoam and Stainless Steel construction
- Environmentally sustainable, ReFlo Technology uses the highest quality recycled plastic
- Industry colour-coding for effective infection control
- Lockable and closed-away systems for public cleaning



* Stated figure represents maximum use of recycled plastic in ReFlo Janitorial range, not including kits and accessories.



PM13 with SRK21 and SRK22 Kits, 2 x Deep Storage Drawers and 4 x Shallow Storage Drawers and Lockable Doors. Consumables for illustration purposes only.

Nu-Design
Bespoke Janitorial
Configurable Cleaning Systems
See page 53



PM13
• Optional Castors
• Optional Doors
• Optional Storage Drawers
• 580x972x1073mm (WxLxH)



PM13 with optional:
• 2 x Deep Storage Drawers
• 4 x Shallow Storage Drawers
• 6 x Storage Box Runners
• Castors: 4 x 100mm
• Lockable Doors
• 4 x 5L Pails
• 2 x 10L Buckets
• 580x972x1073mm (WxLxH)



PM13 with optional:
• 2 x Deep Storage Drawers
• 4 x Shallow Storage Drawers
• 6 x Storage Box Runners
• Castors: 4 x 100mm
• 580x972x1073mm (WxLxH)



PM13 with optional:
• 2 x Deep Storage Drawers
• 4 x Shallow Storage Drawers
• 6 x Storage Box Runners
• Castors: 4 x 100mm
• Lockable Doors
• 580x972x1073mm (WxLxH)

NEW PRO-Matic Trolley Range

Our latest additions to the PRO-Matic Range, the PM24 and PM34 provide a lockable multi-waste recycling system.

The PM24 and PM34 offers the option to separate your waste responsibly with a choice of 3 or 4 industry colour-coded bins.

- Increase cleaning productivity with configurable design
- Structofoam and Stainless Steel construction
- Environmentally sustainable, ReFlo Technology uses the highest quality recycled plastic
- Industry colour-coding for effective infection control
- Folds away for compact, convenient and unobtrusive waste storage.



Removable Bin Feature
Completely detachable and manoeuvrable swing-out bin for convenient waste removal. Colour-coding options available for effective infection control.



PM24 with SRK21 and SRK22 Kits and SRK28 Door Panel Kits. Consumables for illustration purposes only.



PM34 with SRK21 and SRK22 Kits and SRK29 Door Panel Kits. Consumables for illustration purposes only.



PM24
• Waste 3 x 120L / 6 x 70L
• End Detachable Wheeled Bins and Central Static Bin
• Optional Castors
• Lockable Doors
• Industry Colour-coding
• 580x1335x1073mm (WxLxH)



PM34
• Waste 4 x 120L / 8 x 70L
• End Detachable Wheeled Bins and Central Static Bin
• Optional Castors
• Lockable Doors
• Industry Colour-coding
• 580x1700x1073mm (WxLxH)

PRO-Matic Mop Kits & Accessories



KIT SRK1S / SRK1KS
 • Vertical Press with Stainless Steel Handle available with / without Foam Insert
 • 1 x 17L Red Handle Bucket, Grey
 • 1 x 17L Blue Handle Bucket, Grey
 • 1 x Bucket Support Tray
 • Used on: PM10 / 20 / 30



KIT SRK2S / SRK2KS
 • Vertical Press with Stainless Steel Handle available with / without Foam Insert
 • 1 x 22L Red Handle Bucket, Grey
 • 1 x 22L Blue Handle Bucket, Grey
 • 1 x Extension Tray
 • Used on: PM10 / 20 / 30



KIT SRK4
 • 1 x MopMatic2 Bucket, Grey
 • C/W Set of Colour-coded Discs
 • C/W 2.5L Dosing Bottle
 • 1 x 22L Red Handle Bucket, Grey
 • 1 x Extension Tray
 • Used on: PM10 / 20 / 30



KIT SRK5
 • 2 x MopMatic2 Buckets, Grey
 • C/W Set of Colour-coded Discs
 • C/W 2.5L Dosing Bottle
 • 1 x Extension Tray
 • Used on: PM10 / 20 / 30



MidMop Option MMB1616
 • Vertical Press available with / without Foam Insert
 • 510x680x1020mm (WxLxH)
 • Used on: PM10 / 20 / 30



Bag Splitter Kit
 • 1 x Bag Splitter with Fixing Screws for Dual Waste
 • C/W Roll of 70L Waste Bags
 • C/W Colour-coded Discs
 • Used on: PM Range



Customisable Door Panels
KIT SRK27
 • Door Graphic Set No.1, Happy Cleaning
KIT SRK28
 • Door Graphic Set No.2, Big Ben
KIT SRK29
 • Door Graphic Set No.3, Sunflowers
 Used on: PM Range

For a personalised door panel with your logo, get in touch today to find out more.



KIT SRK49
 • Swing-out Bin
 • Used on: PM10 / 11 / 12 / 20 / 21 / 22 / 30 / 31 / 32



KIT SRK3S
 • Speedclean Wide Press with Stainless Steel Handle
 • 1 x 22L Red Handle Bucket, Grey
 • 1 x 22L Blue Handle Bucket, Grey
 • 1 x Extension Tray
 • Used on: PM10 / 20 / 30



KIT SRK6S
 • 2 x MopMatic 2 Buckets, Grey
 • C/W Set of Colour-coded Discs
 • C/W 2.5L Dosing Bottle
 • 1 x 22L Red Handle Bucket, Grey, C/W Lid
 • MopMatic2 Hang-on Frame, Stainless Steel
 • 1 x Extension Tray
 • Used on: PM10 / 20 / 30



KIT SRK26
 • Optional Doors
 • C/W Locks and Hinges
 • Used on: PM11 / 13 / 20 / 21 / 22 / 30 / 31 / 32

KIT SRK30
 • Optional Single Door and Back Panel
 • C/W Locks and Hinges
 • Used on: PM11 / 13 / 20 / 21 / 22 / 30 / 31 / 32



KIT SRK31
 • Optional Double Doors and 2 x Back Panels
 • C/W Locks and Hinges
 • Used on: PM13 / 21 / 30 / 31 / 32



KIT SRK62S
 • Hood Set
 • Lockable
 • Used on: PM Range

Nu-Design Bespoke Janitorial



How it works

1. Select your trolley base and castor options
2. Pick storage options that meet your needs exactly
3. Choose your mopping system, waste options, accessories and personalisation
4. Submit for an itemised breakdown and quote

Compatible with desktop and mobile devices



Visit: numatic.com/apps/nu-design

Individual Environments Demand Individual Cleaning Solutions

Finding a janitorial system that fits your needs completely can be a real challenge. Giving total freedom of choice to the user, Nu-Design offers the ultimate solution.

Nu-Design guides you through the product configuration process, providing a visual output and configuration breakdown at each selection. The result; a reliable, functional and innovative cleaning system that fits your needs precisely.



Poor selection and configuration lowers cleaning standards and productivity.



Mop Kits



PCM403 PolyStatic 3-Piece Mop Set
 • C/W 50 x PolyStatic Mop Cloths
 Disposable PolyStatic Mop "Gripper" Pad
 • Velcro Fixing
 • Pad size 400mm



PCM401 PolyStatic 1-Piece Mop Set
 • C/W 50 x PolyStatic Mop Cloths
 Disposable PolyStatic Mop "Gripper" Pad
 • Velcro Fixing
 • Pad size 400mm



PCT400 PolyStatic Telescopic Mop Set
 • C/W 50 x PolyStatic Mop Cloths
 Disposable PolyStatic Mop "Gripper" Pad
 • Velcro Fixing
 • Pad size 400mm



DTK12G Wing Mop Pump Action Set
 • C/W 1 x BluTec Microfibre Pocket Mop
 • Suitable for Vertical Press, Wide Press and MopMatic
 • Pocket Fixing
 • Pad size 400mm



DTK13G Wing Mop Pump Action Set
 • C/W 1 x BluTec Microfibre Hang-on Mop
 • Suitable for Vertical Press
 • Hang-on Fixing
 • Pad size 400mm



PolyStatic Gripper Pad
 • Disposable PolyStatic Mop "Gripper" Pad



PolyStatic Disposable Mop Dusters
 Fits on PCM403, PSM400G
 • Pack of 50 x PolyStatic Mop Cloths (White / Red / Blue / Green / Yellow)
 • Carton of 400 x PolyStatic Mop Cloths, (8 x 50) (White / Red / Blue / Green / Yellow)
 • C/W 2 x "Gripper" Pads



PSM400G PolyStatic SprayMop Set
 • C/W 50 x PolyStatic Mop Cloths
 • C/W Disposable PolyStatic Mop "Gripper" Pad
 • C/W 400ml Bottle
 • Velcro Fixing
 • Pad size 400mm



DTK1 Kentucky Mop Set
 • C/W 1 x Kentucky 400g Mop
 • Suitable for Vertical Press



DTK2 Pocket Mop Set
 • C/W 1 x BluTec Microfibre Pocket Mop
 • Suitable for Vertical Press, Wide Press and MopMatic
 • Pocket Fixing
 • Pad size 400mm



MM30G
 • C/W 1 x Sponge
 • Velcro Fixing
 • 30L capacity bucket
 • Folding Press
 • 4 x 50mm Castors
 • Pad size 350mm
 • 340x475x320mm (WxLxH)



HB1812R
 • Vertical Press available with / without Foam Insert
 • 18L Clean capacity / 12L Dirty capacity
 • Optional Mop Kits - DTK1 / DTK2 / DTK3 / DTK12G / DTK13G
 • 4 x 75mm Castors
 • 410x560x800mm (WxLxH)



MMB1616
 • Vertical Press available with / without Foam Insert
 • 16L Clean capacity / 16L Dirty capacity
 • Optional Mop Kits - DTK1 / DTK2 / DTK3 / DTK12G / DTK13G
 • 4 x 75mm Castors
 • 510x680x1020mm (WxLxH)



DTK3 Hang-on Mop Set
 • C/W 1 x BluTec Microfibre Mop
 • Suitable for Vertical Press
 • Hang-on Fixing
 • Pad size 400mm



DTK4 Velcro Mop Set
 • C/W 1 x BluTec Microfibre Mop
 • Suitable for Wide Press and MopMatic
 • Velcro Fixing
 • Pad size 400mm



DTK6G SprayMop Master Set
 • C/W 1 x BluTec Microfibre Pocket Mop
 • C/W 400ml Bottle
 • Pocket Fixing
 • Pad size 400mm



TMR2815
 • Vertical Press available with / without Foam Insert
 • 28L Clean capacity / 15L Dirty capacity
 • 4L Small accessory carrier
 • Optional Mop Kits - DTK1 / DTK2 / DTK3 / DTK12G / DTK13G
 • 4 x 75mm Castors
 • 410x800x1250mm (WxLxH)



TMR2815W
 • Vertical Press available with / without Foam Insert
 • 28L Clean capacity / 15L Dirty capacity
 • 10L Large accessory carrier
 • 30L Waste capacity
 • Optional Mop Kits - DTK1 / DTK2 / DTK3 / DTK12G / DTK13G
 • 4 x 75mm Castors
 • 410x800x1255mm (WxLxH)



DTK8G SprayMop Master Set
 • C/W 1 x BluTec Microfibre Velcro Mop
 • C/W 400ml Bottle
 • Velcro Fixing
 • Pad size 400mm



DTK9 Twist Mop
 • C/W 1 x Bactiguard Mop



DTK10 MultiMop
 • C/W 1 x Sponge
 • Folding Press
 • Velcro Fixing
 • Sponge size 350mm



MMB1616 shown with Optional Mop Stand and DTK13G Mop Set Consumables for illustration purposes only.

Carousel Range

NC0R

- Waste 70L
- 2 x 5L Swing Pails
- C/W SprayMop Master and Tray
- Castors 4 x 80mm
- 480x545x890mm (WxLxH)



NC1R

- Waste 70L
- 1 x 4L Small Caddy
- 14L Bucket and Dolly Mop Basket
- Castors 4 x 80mm
- Optional Twist Mop (NC1R-TM)
- 480x545x890mm (WxLxH)



Image shows NC1R-TM

NC2R

- Waste 2 x 70L
- Castors 4 x 80mm
- 480x545x890mm (WxLxH)



NC3R

- Waste 70L
- 1 x 4L Small Caddy
- 1 x 10L Large Caddy
- Castors 4 x 80mm
- 480x545x890mm (WxLxH)



NC4R

- 2 x 4L Small Caddy
- 2 x 10L Large Caddy
- Castors 4 x 80mm
- 480x545x890mm (WxLxH)



NuBag Range



SAX120PR

- Waste 120L
- Castors 4 x 75mm
- 665x500x910mm (WxLxH)



NSX240R

- Bag Capacity 2 x 120L
- Castors 4 x 75mm
- 580x780x965mm (WxLxH)



LLT200R

- Bag Capacity 2 x 100L
- Castors 4 x 75mm
- 580x780x965mm (WxLxH)



NBT200R

- Bag Capacity 2 x 100L
- Castors 4 x 75mm
- 580x780x860mm (WxLxH)



NB3002R / AT

- Bag Capacity 1 x 100L, 1 x 200L
- Castors 4 x 200mm
- 665x1110x1115mm (WxLxH)



NX1001

- Bag Capacity 100L
- Castors 4 x 75mm
- 390x460x960mm (WxLxH)



NX1002

- Bag Capacity 2 x 100L
- Castors 4 x 75mm
- 460x760x960mm (WxLxH)



NX1501

- Bag Capacity 150L
- Castors 4 x 75mm
- 460x760x760mm (WxLxH)



NX2001

- Bag Capacity 200L
- Castors 4 x 75mm
- 460x760x960mm (WxLxH)



NX2401

- Bag Capacity 240L
- Castors 4 x 75mm
- 550x780x960mm (WxLxH)

ReFlo Technology

Our ReFlo range is engineered from the highest quality, recycled plastic using our innovative, environmentally sustainable ReFlo Technology. ReFlo Technology uses post-industrial plastics from the automotive industry, which are diverted from landfill or incineration.



Compact Carousel Range

- Convenient and user-friendly
- Compact and easy-to-store
- Detachable colour-coded caddies



NC0R with 2 x 5L Swing Pails, SprayMop Master and tray. Consumables for illustration purposes only.

NuKeeper Range



- NKS1LLR**
- Bag Capacity 1 x 100L
 - Low Level (LL)
 - 1 x Storage Shelf
 - Castors 4 x 100mm
 - 582x998x1026mm (WxLxH)



- NKS2LLR**
- Bag Capacity 2 x 100L
 - Low Level (LL)
 - 1 x Storage Shelf
 - Castors 4 x 100mm
 - 582x1420x1026mm (WxLxH)



- NKS1R**
- Bag Capacity 1 x 100L
 - Full Height
 - 2 x Storage Shelves
 - Castors 4 x 100mm
 - 582x998x1352mm (WxLxH)



- NKTOLLR**
- Low Level (LL)
 - 1 x Twin Storage Shelf
 - Castors 4 x 100mm
 - 582x940x1026mm (WxLxH)



- NKT1LLR**
- Bag Capacity 1 x 100L
 - Low Level (LL)
 - 1 x Twin Storage Shelf
 - Castors 4 x 100mm
 - 582x1361x1026mm (WxLxH)



- NKT2LLR**
- Bag Capacity 2 x 100L
 - Low Level (LL)
 - 1 x Twin Storage Shelf
 - Castors 4 x 100mm
 - 582x1783x1026mm (WxLxH)



- NKS2R**
- Bag Capacity 2 x 100L
 - Full Height
 - 2 x Storage Shelves
 - Castors 4 x 100mm
 - 582x1420x1352mm (WxLxH)



- NKU30RFF**
- Flexi-Front (FF)
 - 1 x Twin Storage Shelf
 - Castors 4 x 200mm All-Terrain Wheels
 - 667x1116x1205mm (WxLxH)



- NKU30RHF**
- Hard-Front (HF)
 - Lockable
 - Space Saving Bi-fold Doors
 - Castors 4 x 200mm All-Terrain Wheels
 - 667x1116x1205mm (WxLxH)



- NKU31RFF**
- Bag Capacity 1 x 100L
 - Flexi-Front (FF)
 - 1 x Twin Storage Shelf
 - Castors 4 x 200mm All-Terrain Wheels
 - 667x1532x1205mm (WxLxH)



- NKTOR**
- Full Height
 - 2 x Twin Storage Shelves
 - Castors 4 x 100mm
 - 582x940x1352mm (WxLxH)



- NKT1R**
- Bag Capacity 1 x 100L
 - Full Height
 - 2 x Twin Storage Shelves
 - Castors 4 x 100mm
 - 582x1361x1352mm (WxLxH)



- NKT2R**
- Bag Capacity 2 x 100L
 - Full Height
 - 2 x Twin Storage Shelves
 - Castors 4 x 100mm
 - 582x1783x1352mm (WxLxH)



- NKU31RHF**
- Bag Capacity 1 x 100L
 - Hard-Front (HF)
 - 1 x Twin Storage Shelf
 - Lockable
 - Space Saving Bi-fold Doors
 - Castors 4 x 200mm All-Terrain Wheels
 - 667x1532x1205mm (WxLxH)



- NKU32RFF**
- Bag Capacity 2 x 100L
 - Flexi-Front (FF)
 - 1 x Twin Storage Shelf
 - Castors 4 x 200mm All-Terrain Wheels
 - 667x1948x1205mm (WxLxH)



- NKU32RHF**
- Bag Capacity 2 x 100L
 - Hard-Front (HF)
 - 1 x Twin Storage Shelf
 - Lockable
 - Space Saving Bi-fold Doors
 - Castors 4 x 200mm All-Terrain Wheels
 - 667x1948x1205mm (WxLxH)

NuKeeper Universal Top Tray Kits

For illustration purposes, all tray kits are shown in location on trolley.



NKA1
 • 1 x Tray with Lid
 • 1 x Tray with Divisions and Lid
 • 1 x Half Tray



NKA2
 • 2 x Tray with Divisions and Lid
 • 1 x Half Tray



NKA3
 • 2 x Tray with Lid
 • 1 x Half Tray



NKA4
 • 1 x Tray
 • 1 x Tray with Divisions
 • 1 x Half Tray

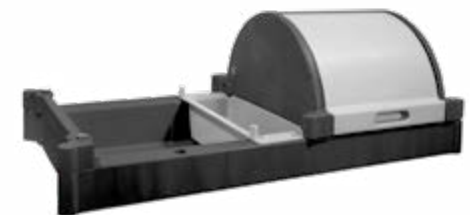


NKA5
 • 2 x Tray
 • 1 x Half Tray



NKA6
 • 2 x Tray with Divisions
 • 1 x Half Tray

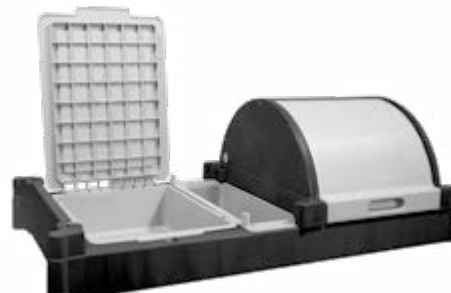
NuKeeper Universal Hood Kits



NKA7R
 • 1 x Hood Set
 • 1 x Half Tray



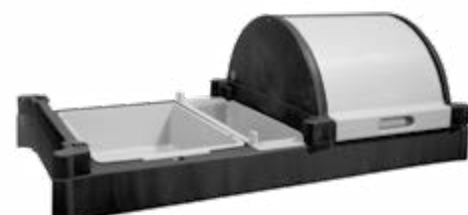
NKA8R
 • 2 x Hood Set
 • 1 x Half Tray



NKA9R
 • 1 x Hood Set
 • 1 x Tray with Lid
 • 1 x Half Tray



NKA10R
 • 1 x Hood Set
 • 1 x Tray with Divisions and Lid
 • 1 x Half Tray



NKA11R
 • 1 x Hood Set
 • 1 x Tray
 • 1 x Half Tray



NKA12R
 • 1 x Hood Set
 • 1 x Tray with Divisions
 • 1 x Half Tray



NKA13 Top Kit
 • Top Kit - Laundry Support Set

NuKeeper End Kits

NKA100PR
 • Bag Capacity 1 x 100L
 • Optional Moulded Laundry Bag Extension Kit



NKA100PAR
 • Bag Capacity 1 x 100L
 • Optional Moulded Laundry Bag Extension Kit
 • Adjustable Handle



NKA101PR
 • Waste 1 x 120L
 • Optional Moulded Full Waste Bag Extension Kit
 C/W 3 Piece Lid Set, Black



NKA102PR
 • Waste 1 x 140L / 2 x 70L
 • Optional Moulded Twin Waste Bag Extension Kit
 C/W Split Lid Set, Red / Blue



NKA103PR
 • Waste 1 x 120L
 • Optional Moulded Linen Bag Extension Kit
 C/W 3 Piece Lid Set, Black



NKA140PR
 • Waste 1 x 120L
 • Optional Moulded Full Waste Bag Extension Kit
 C/W iPad / Tablet Storage Lid Set, Black



NKA109UR
 • Optional Vacuum Storage Platform and Support Frame Kit, Black
 • Use on NKU Models Only



NKA111UR
 • Optional End Kit Twin End Half Tray Kit, Black
 • All NKS / NKT / NKU Models



NKA112UR
 • Optional End Kit Twin End Full Tray Kit, Black
 • All NKS / NKT / NKU Models



NKU3R2FF
 (Flexi-Front shown with Hood Kit NKA12R)



NKA120R
 • Optional End Kit SprayMop Tray Kit, Black
 • All NKS / NKT / NKU Models



NKA130UR
 • Optional End Kit 30 Litre Waste Bin Kit, Black
 • All NKS / NKT / NKU Models



Lined writing area for page 62.

Lined writing area for page 63.

Head Office

Numatic International Limited

Chard, Somerset TA20 2GB UNITED KINGDOM

Tel: 01460 68600 numatic.com

Numatic International S.A.S
13/17 rue du Valengelier
EAE la Tuilerie, 77500 Chelles
FRANCE

Tel: 01 64 72 61 61
numatic.fr

**Numatic International
Schweiz AG.**
Sihlbruggstrasse 3A
6340 Baar
SCHWEIZ

Tel: 041 768 07 60
numatic.ch

Numatic International SLU
La Forja, 41, 08840
Viladecans, Barcelona
SPAIN

Tel: 34 936 472 222
numatic.es

Numatic International (Pty.) Ltd.
16th & Pharmaceutical Roads
Midrand, Gauteng, S.A. 1685
SOUTH AFRICA

Tel: 0861 686 284
numatic.co.za

Numatic International ULDA
Rua da Boa Viagem, 177
4470 - 210 Moreira Maia
PORTUGAL

Tel: 351 220 047 700
numatic.pt

Numatic International GMBH
Fränkische Straße 15-19,
30455 Hannover
DEUTSCHLAND

Tel: 05 11 98 42 16 0
numatic.de

Numatic International BV
Vennootsweg 15
2404 CG, Alphen aan den Rijn
NEDERLAND

Tel: 0172 467 999
numatic.nl

Numatic