

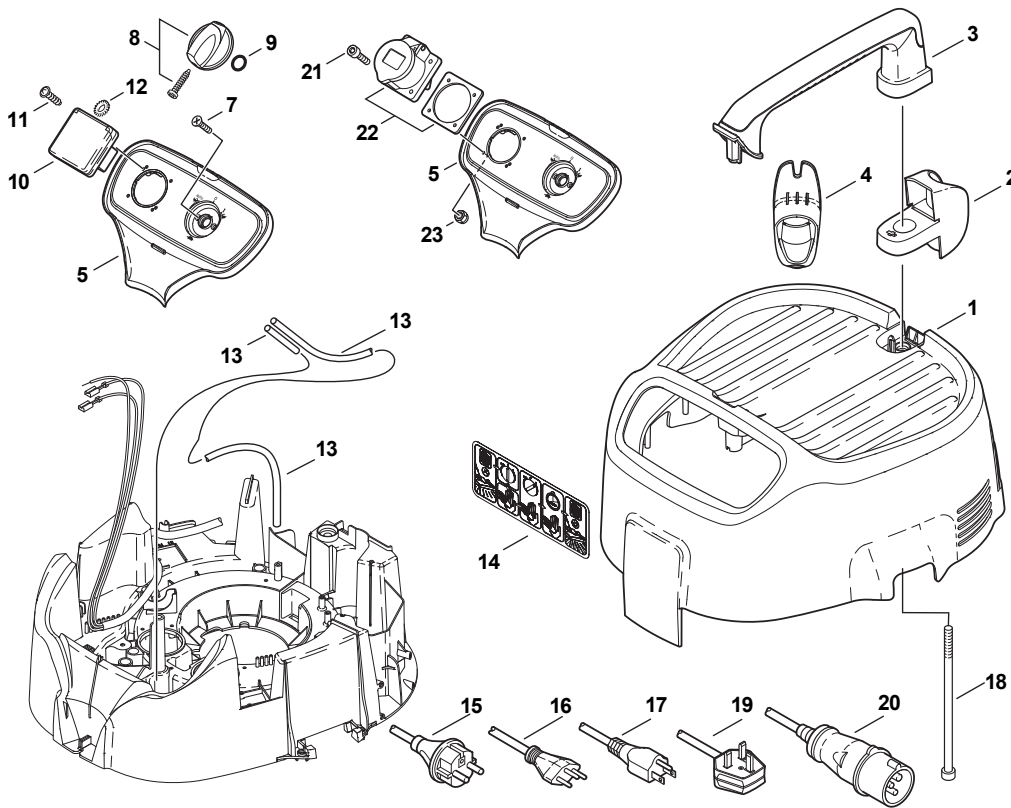
PARTS LIST



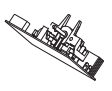
2022.05.12

TABLE OF CONTENTS

Cabinet 763-21 ED	1
Cabinet, switch box 763-2M ED	3
Base, motor 763-21 ED	5
Base, motor 763-2M ED	7
Filter, cleaning system 763-21 ED	9
Filter, cleaning system 763-2M ED	11
Container 763-21 ED	13
Frame 761 & 763	15
Accessories 560, 761, 763	17
Accessories (H/M) 560, 761, 763	19




Up to serial number:
3510170800138



For ATTIX 19 AS/E XC US
Up to serial number:
3510174602262

25

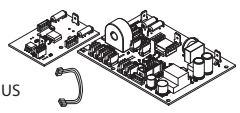
-21
From serial number:
3510170800138



For ATTIX 19 AS/E XC US
From serial number:
3510174602262


27

From serial number:
3510170800138



For ATTIX 19 AS/E XC US
From serial number:
3510174602262

26

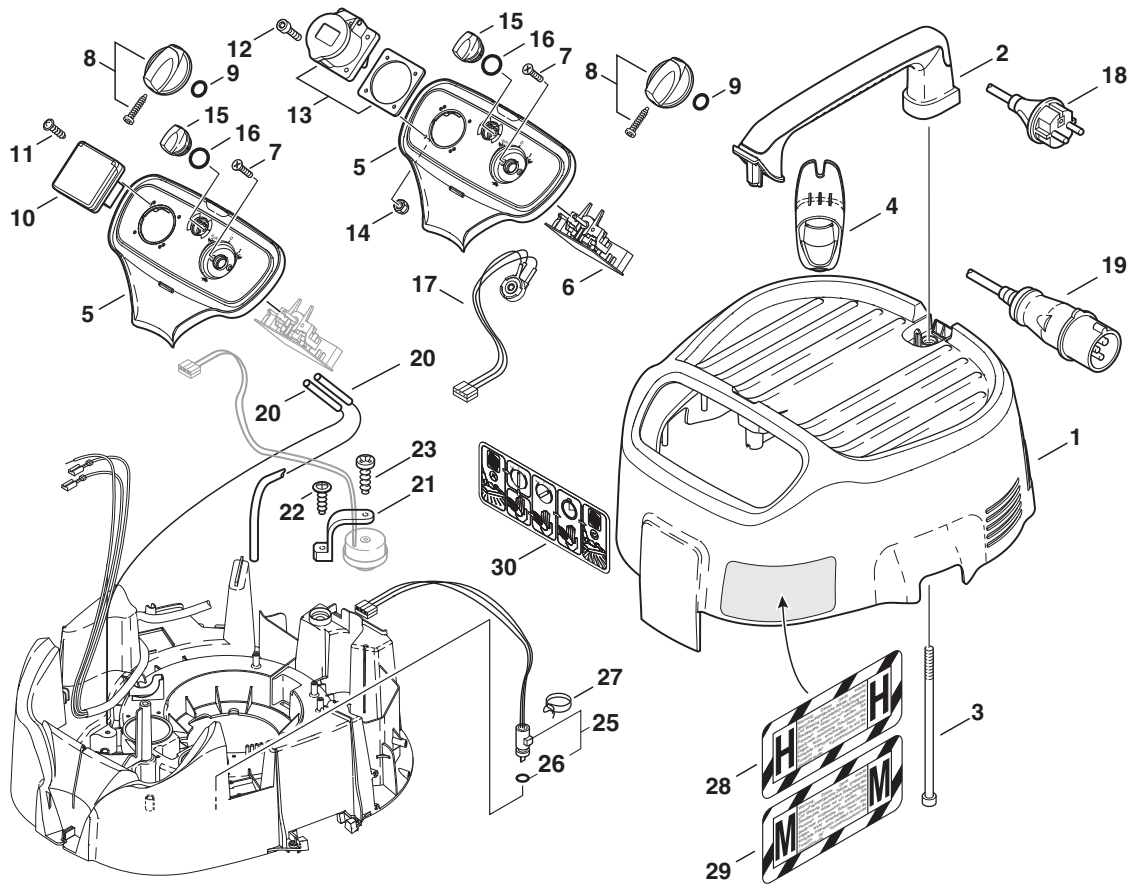


28

No.	Part No.	Qty.	Description	Part Note
1	107402652	1	6OOD W.SOUNDPROOFING	
2	302000382	1	SUCTION TUBE FASTENER	[1]
3	107402650	1	HANDLE KIT	
4	302000380	1	CLIP	
5	302000757	1	SWITCH BOX ATTIX 5-7 21	
7	18274	2	COUNTERS UNK SCREW M4X12	
8	909100204	1	ROTARY KNOB 06X5	
9	9868	1	O-RING 10.2X2.5 NBR 70	
10	107400059	1	SOCKET 16A/250V CH	[2]
10	302004338	1	SOCKET 15A/125V US/CSA	[3]
10	302000683	1	SOCKET 10A/250V DK	[4]
10	302004034	1	SOCKET 16A/250V EU	[5]
10	302004336	1	SOCKET 13A/250V GB	[6]
11	11256	2	SCREW 3.5 X 18	
12	4021	2	SERRATED LOCK WASHER A4	[3]
13	107411687	1	SILIKON HOSE D3X1,5	
14	302000824	1	LABEL "TOTAL CLEAN" 160X	
15	107402642	1	POWER CORD H05RRR-F	[4]
15	107402641	1	POWER CORD H05RRR-F	[5]
16	107400267	1	CORD H05RRR-F 3G1.0CH	[2]
17	302004332	1	POWER CORD SJTW-A AWG14/3X8.4 US	[3]
18	909100084	2	SCREW M6X140	
19	107400270	1	CORD H05RRR-F 3G1.5 BS1	[6]
20	107400271	1	CORD H07BQ-F 3G2.5 GB	[7]
21	50598	4	SCREW M5X20	[7]
22	107402842	1	OUTLET 2P AND PE 16A 110V	[7]
23	7417	4	HEXAGON THIN NUT	[7]
24	107404542	1	ANTI-INTEFERENCE	
25	302000853	1	PC BOARD/SWITCH	[8]
25	302000852	1	ELECTRONIC 120V SET1	[9]
26	107415190	1	PCBA AUTO ON/OFF 1M-2S KIT1 220-240V	
27	107413449	1	ROTARY SWITCH 3 POS+REG	

Part Notes:

- [1] - 560-21XC, 12GALL.RDFD
STOCK COVERS GUARANTEE
- [2] - *CH*
- [3] - *US*
- [4] - *DK*
- [5] - *EU*
- [6] - *GB,230V*
- [7] - *GB,110V*
- [8] - 220-240V
- [9] - 100-120V



Up to serial number:
3510174801314

6

Up to serial number:
3510174801314

24

From serial number:
3510174801314

31

From serial number:
3510174801314

6A

6B

From serial number:
3510174801314

24A

From serial number:
3510174801314

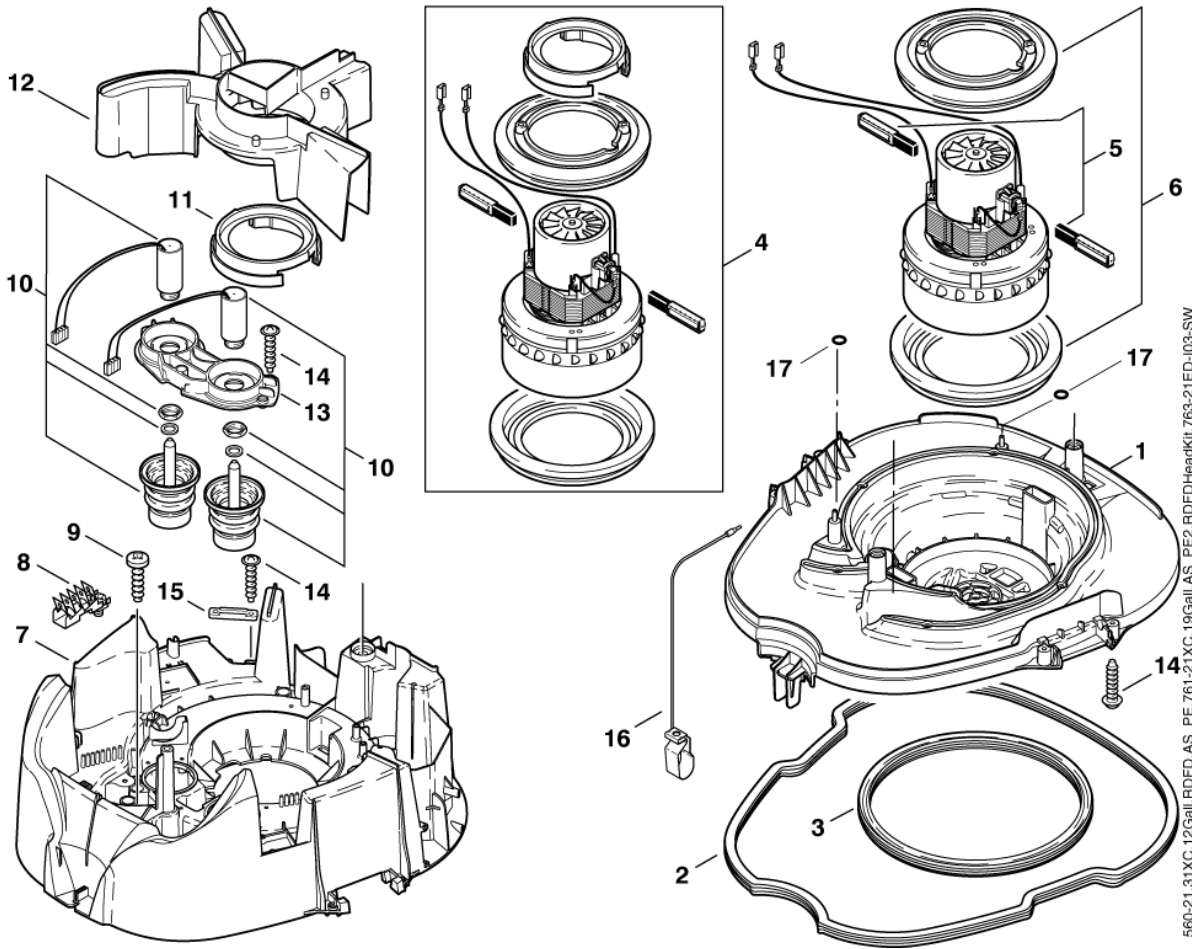
32

No.	Part No.	Qty.	Description	Part Note
1	107402652	1	6OOD W.SOUNDPROOFING	
2	107402650	1	HANDLE KIT	
3	909100084	2	SCREW M6X140	
4	302000380	1	CLIP	
5	302001161	1	SWITCH BOX ATTIX 5 7 -2	
6	302001427	1	ELECTRONIC FLOW MEASUREME	[1]
6	302001426	1	ELECTRONIC FLOW	[2]
7	18274	2	COUNTERS UNK SCREW M4X12	
8	909100204	1	ROTARY KNOB 06X5	
9	9868	1	O-RING 10.2X2.5 NBR 70	
10	302004034	1	SOCKET 16A/250V EU	[3]
11	11256	2	SCREW 3.5 X 18	
12	50598	4	SCREW M5X20	[4]
13	107402842	1	OUTLET 2P AND PE 16A 110V	[4]
14	7417	4	HEXAGON THIN NUT	[4]
15	107400575	1	TURNING KNOB FOR POTI -	
16	107400576	1	O-RING 21X1.5	
17	302000429	1	ELECTRONIC POTENTIOMETER	
18	107402641	1	POWER CORD H05RR-F	[3]
18	107402642	1	POWER CORD H05RR-F	[5]
19	302000760	1	POWER CORD H07BQ-F3G1.5 X 10M GB	[6]
20	107411687	1	SILIKON HOSE D3X1,5	
21	25871	1	BRACKET	
22	11254	1	SCREW 3 5X10	
23	14418	1	SCREW 4.2X13 ISO 7049	
24	107400579	1	PIEZO BUZZER	
25	302000428	1	FLOW SENSOR ATTIX 3,5,7	
26	55416	1	O-RING 4.0X1.5 NBR70	
27	107400578	1	HOSE CLAMP D10	
28	302001284	1	LABEL WARNING 'H'	[7]
29	302001285	1	LABEL WARNING'M'	[8]
30	302000824	1	LABEL "TOTAL CLEAN" 160X	
30	1801075	1	PACKING RING	

Part Notes:

- [1] - 560-2MXC*EU*, 761-2MXC*EU*, 763 2M ED
 [2] - 560-2HXC *GB,110V*
 [3] - *EU*
 [4] - 560-2HXC*GB,110V*
 [5] - DK
 [6] - *GB,110V*
 GUARANTEE DATE EXPIRED
 [7] - 560-2HXC
 [8] - 560-2MXC, 761-2MXC

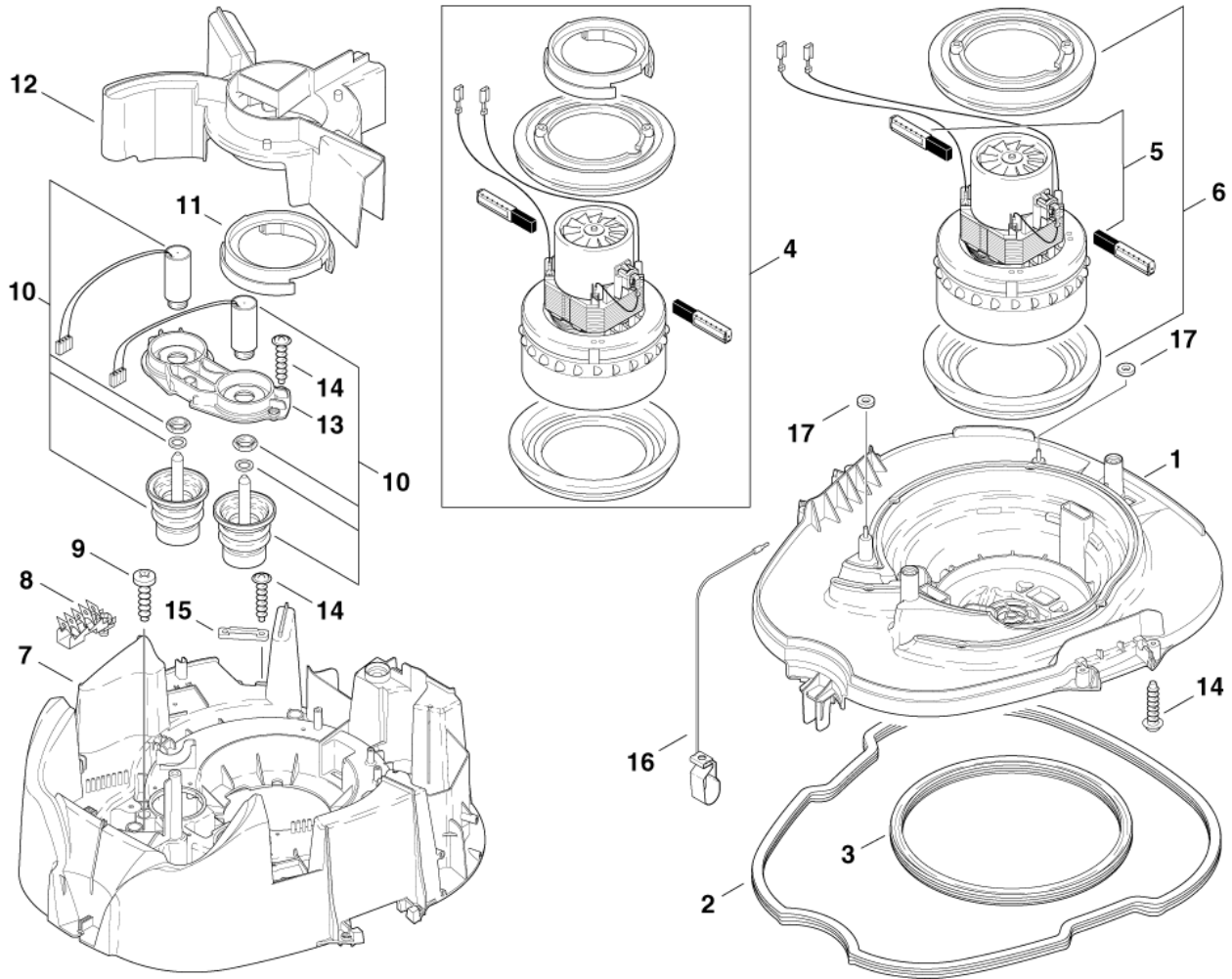
ATTIX 560-21 XC, 560-31 XC, 12Gallon RDFD, 12Gallon AS/PE, RDFD Head Kit, 761-21 XC, 19Gallon AS/PE2, 763-21 ED



No.	Part No.	Qty.	Description	Part Note
1	107413315	1	BASE PLATE - KIT	
2	302000637	1	GASKET	
3	302000697	1	GASKET FILTER	
4	49594	1	MOTOR SQ 1200 X 24	[1]
4	62012	1	EL. MOTOR TURBO 230VOLT	[2]
4	26784	1	MOTOR 120V 1200W	[3]
5	26775	1	CARBON BRUSH SET FOR	[4]
5	26774	1	CARBON BRUSH SET M	[5]
5	49625	1	CARBON BRUSH C	[6]
6	29205	1	SEAL	[7]
6	42538	1	MOTOR BEARING RING SET E	[8]
6	107402627	1	MOTOR BEARING RING SET EC	[8]
6	28875	1	MOTOR BEARING RING SET	[7]
7	107402639	1	PLATE CHUCK ATTIX 560 PP	
8	302004031	1	DISTRIBUTION STRIP 6-POL 16A	
9	909100138	6	SCREW 5X20	
10	107402635	2	ELECTROMAGNET 24V KIT	[9]
10	107400292	2	MAGNET 12V FPR 110V MACHINE	[10]
11	107410490	1	COLLAR	
12	302000373	1	AIR DUCT	
13	302000388	1	FRAME 190X90X18 PP	
14	11256	11	SCREW 3.5 X 18	
15	5697	1	STRAP 3X8X33	
16	302000823	1	CONTACT SPRING 41.8x14 AS	[11]
16	61174	1	EARTHING CABLE	
17	62359	2	GASKET 9X4X1	

Part Notes:

- [1] - 220-240V/1200W
- [2] - 763-21 ED
- [3] - 110-120V/1200W
- [4] - FOR IDENTIF.LETTER "L"
- [5] - FOR IDENTIF.LETTER "M"
- [6] - FOR IDENTIF.LETTER "C"
- [7] - FOR IDENTIF.LETTER "L"+"M"
- [8] - FOR IDENTIF. LETTER "C"
- [9] - FOR 220-240V
- [10] - FOR 100-120V
- [11] - *GB,230V*

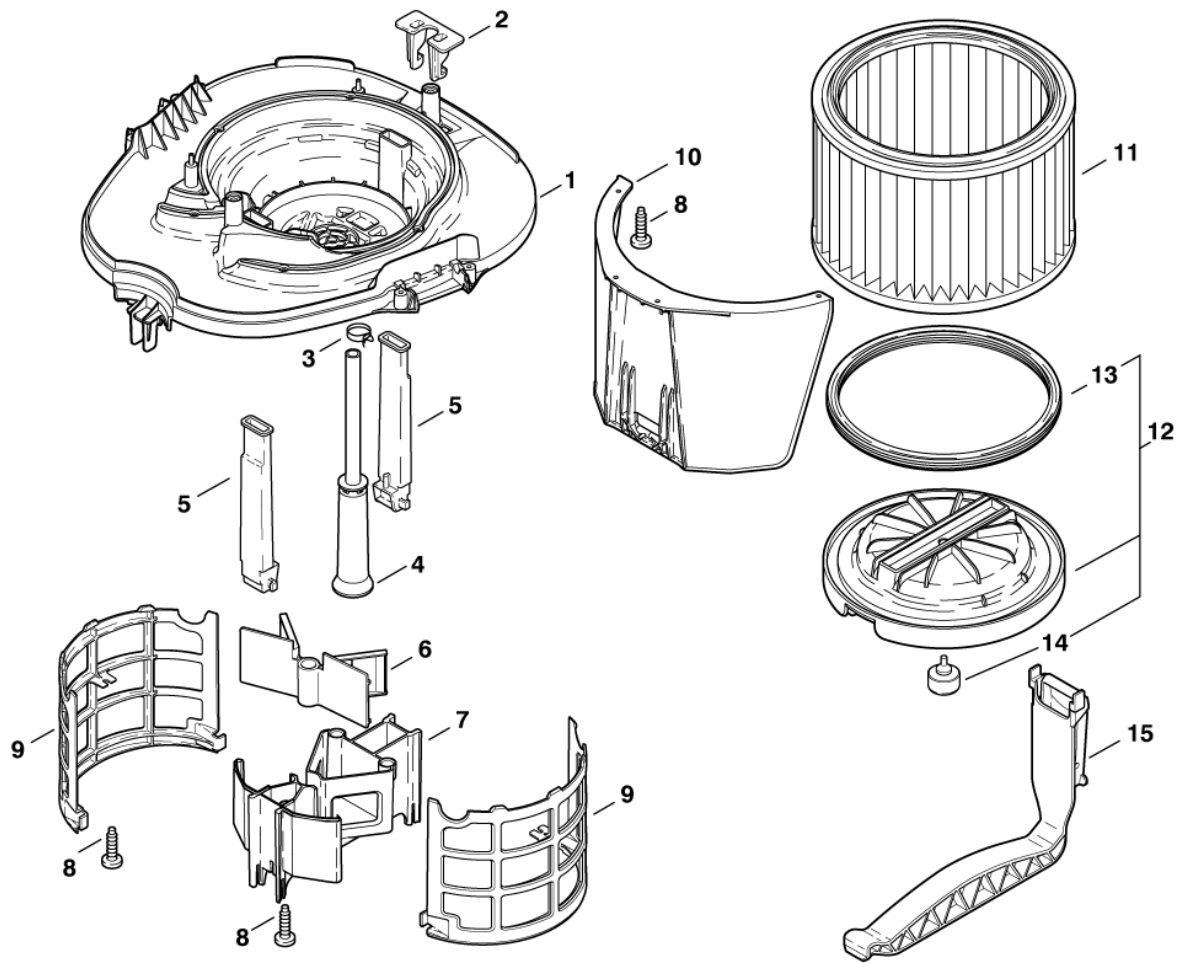


No.	Part No.	Qty.	Description	Part Note
1	107413315	1	BASE PLATE - KIT	
2	302000637	1	GASKET	
3	302000460	1	GASKET	
4	49594	1	MOTOR SQ 1200 X 24	[1]
4	26784	1	MOTOR 120V 1200W	[2]
5	26775	1	CARBON BRUSH SET FOR	[3]
5	49625	1	CARBON BRUSH C	[4]
5	26774	1	CARBON BRUSH SET M	[5]
6	28875	1	MOTOR BEARING RING SET	[6]
6	42538	1	MOTOR BEARING RING SET E	[4]
7	302001657	1	SUPPORTING PLATE ATTIX 56	
8	302004031	1	DISTRIBUTION STRIP 6-POL 16A	
9	909100138	8	SCREW 5X20	
10	107400292	2	MAGNET 12V FPR 110V MACHINE	[7]
10	107402635	2	ELECTROMAGNET 24V KIT	[8]
11	107410490	1	COLLAR	
12	302000373	1	AIR DUCT	
13	302000388	1	FRAME 190X90X18 PP	
14	11256	11	SCREW 3.5 X 18	
15	5697	1	STRAP 3X8X33	
16	61174	1	EARTHING CABLE	
17	62359	2	GASKET 9X4X1	

Part Notes:

- [1] - *EU*
- [2] - *GB,110V*
- [3] - FOR IDENTIF.LETTER "L"
- [4] - FOR IDENTIF.LETTER "C"
- [5] - FOR IDENTIF.LETTER "M"
- [6] - FOR IDENTIF.LETTER"L"+"M"
- [7] - FOR 100-120V
- [8] - FOR 220-240V

ATTIX 560-21 XC, 560-31 XC, 12Gallon RDFD, 12Gallon AS/PE, RDFD Head Kit, 761-21 XC, 19Gallon AS/PE2, 763-21 ED

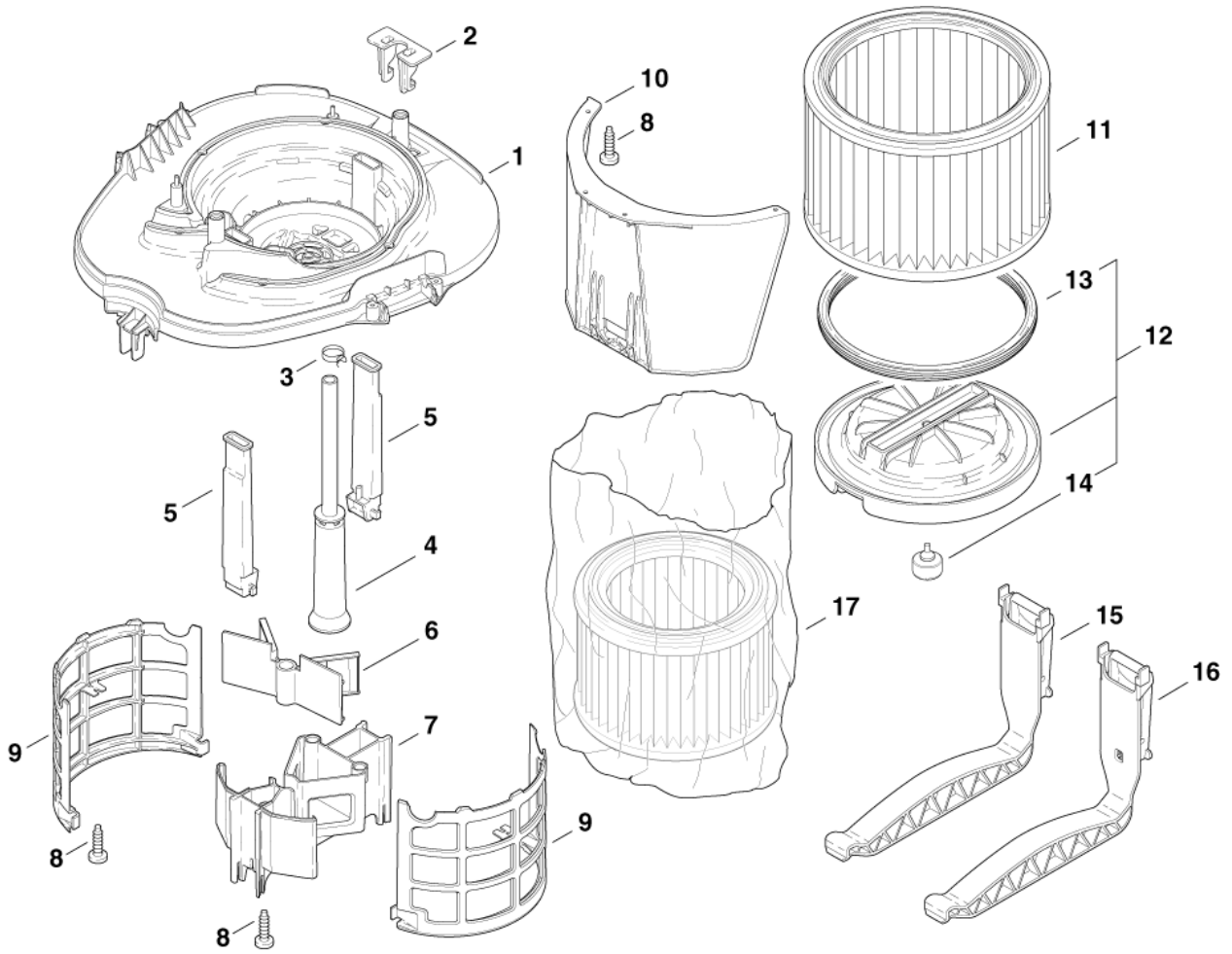


560-21,31XC;12Gall.RDFD,AS,PE;761-21XC;19Gall,AS,PE2,RDFDHeadKit;763-21ED-104-S

No.	Part No.	Qty.	Description	Part Note
1	107413315	1	BASE PLATE - KIT	
2	107413313	1	FIXTURE 72X32X52 - KIT	
3	909100137	1	BAND CLAMP FITTING 19	
4	302001473	1	HOSE D40x396	[1]
4	302001473	1	HOSE D40x396	[2]
5	302000514	2	GASKET	
K1	107412690	1	COVER WITH FLAP ATTIX 560	
8	909100138	9	SCREW 5X20	
9	302000385	2	FILTER SUPPORT CAGE 216X	
10	107402640	1	DEFLECTOR 318X180X212 KIT	
11	302000751	1	ATTIX FILTER ELEMENT	
12	107402653	1	FILTER SURFACE PLATE	
13	302000697	1	GASKET FILTER	
14	302000515	1	PLUG 33X37	
15	107402651	1	TENSION JACK	

Part Notes:

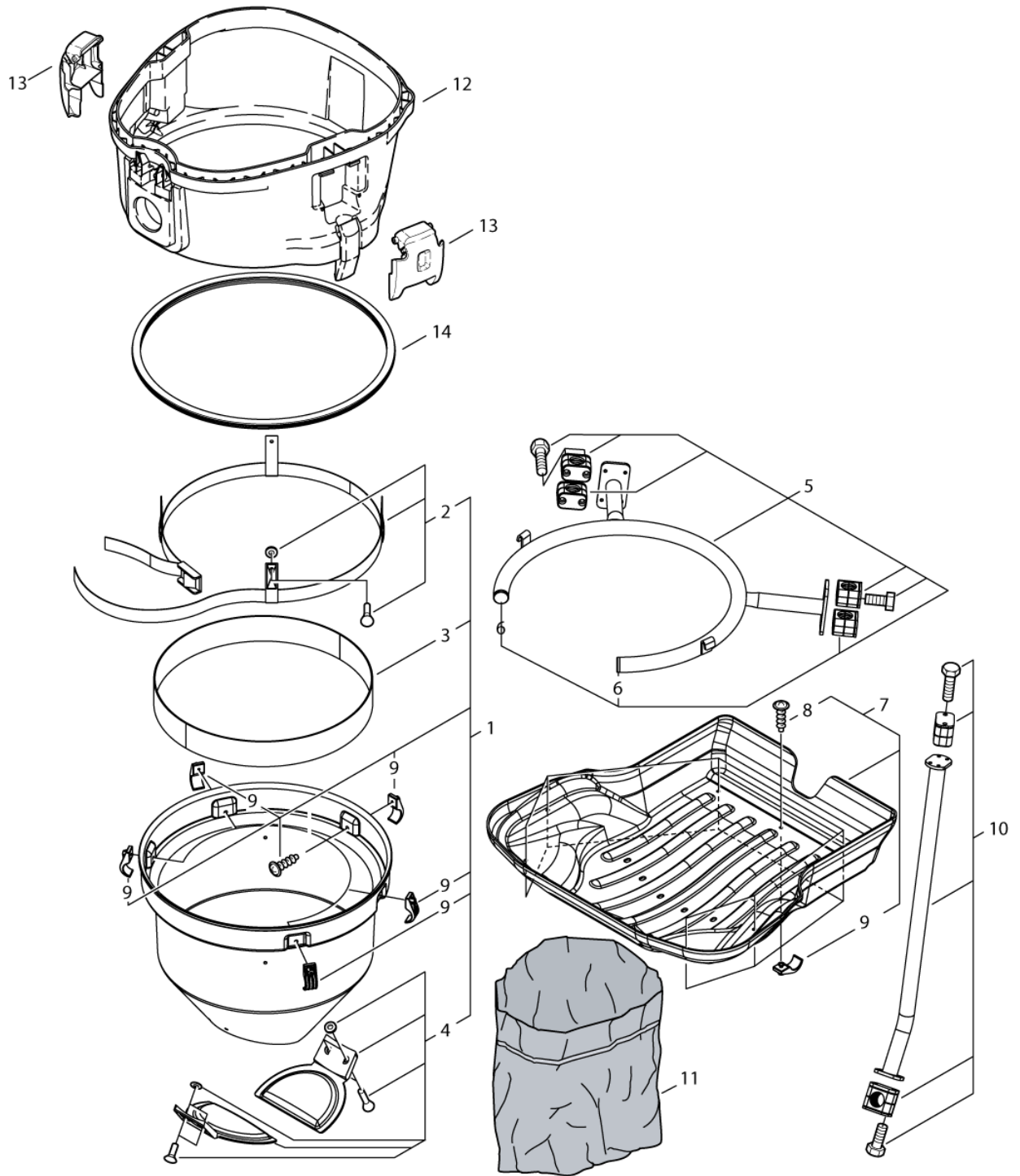
- [1] - ** SEE NOTE
 [2] - * SEE NOTE



No.	Part No.	Qty.	Description	Part Note
1	107413315	1	BASE PLATE - KIT	
2	107413313	1	FIXTURE 72X32X52 - KIT	
3	909100137	1	BAND CLAMP FITTING 19	
4	302001473	1	HOSE D40x396	[1]
5	302001473	1	HOSE D40x396	[2]
5	302000514	2	GASKET	
K1	107412690	1	COVER WITH FLAP ATTIX 560	[3]
8	909100138	9	SCREW 5X20	
9	302000385	2	FILTER SUPPORT CAGE 216X	
10	107402640	1	DEFLECTOR 318X180X212 KIT	
11	107400564	1	FILTER ELEMENT D275X187 H	[4]
11	302000751	1	ATTIX FILTER ELEMENT	[5]
12	107402653	1	FILTER SURFACE PLATE	
13	302000697	1	GASKET FILTER	
14	302000515	1	PLUG 33X37	
15	107402651	1	TENSION JACK	[6]
16	302001139	1	TENSION JACK H	[4]
17	30082	1	DISPOSABLE BAG FOR FILTER	[4]

Part Notes:

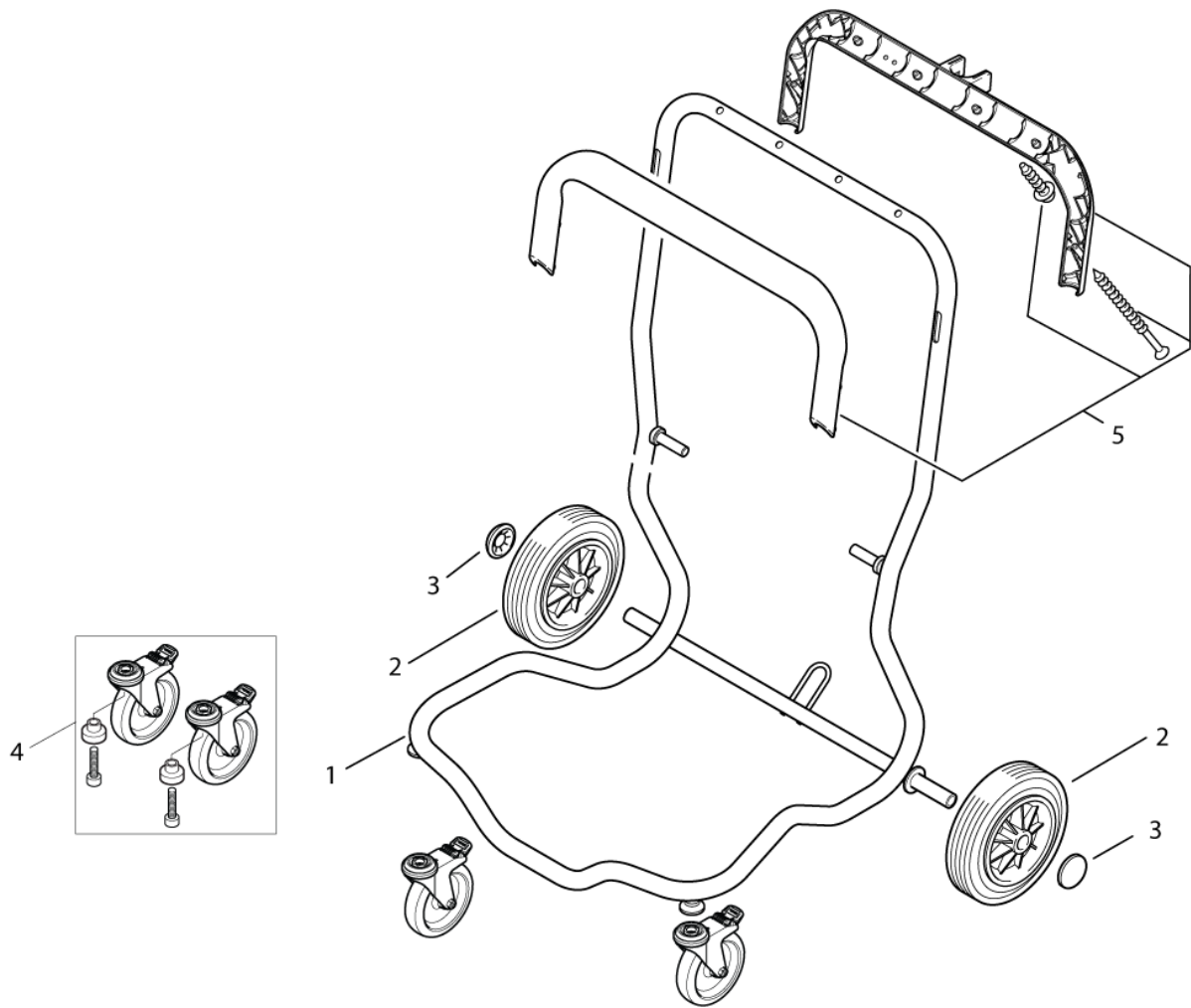
- [1] - 560-2MXC, 560-2HXC,
- [2] - 761-2MXC
- [3] - Includes pos. 6 + 7
- [4] - 560-2HXC
- [5] - 560-2MXC, 761-2MXC, 763-2M ED
- [6] - 560-2MXC, 761-2M XC, 763-2M ED



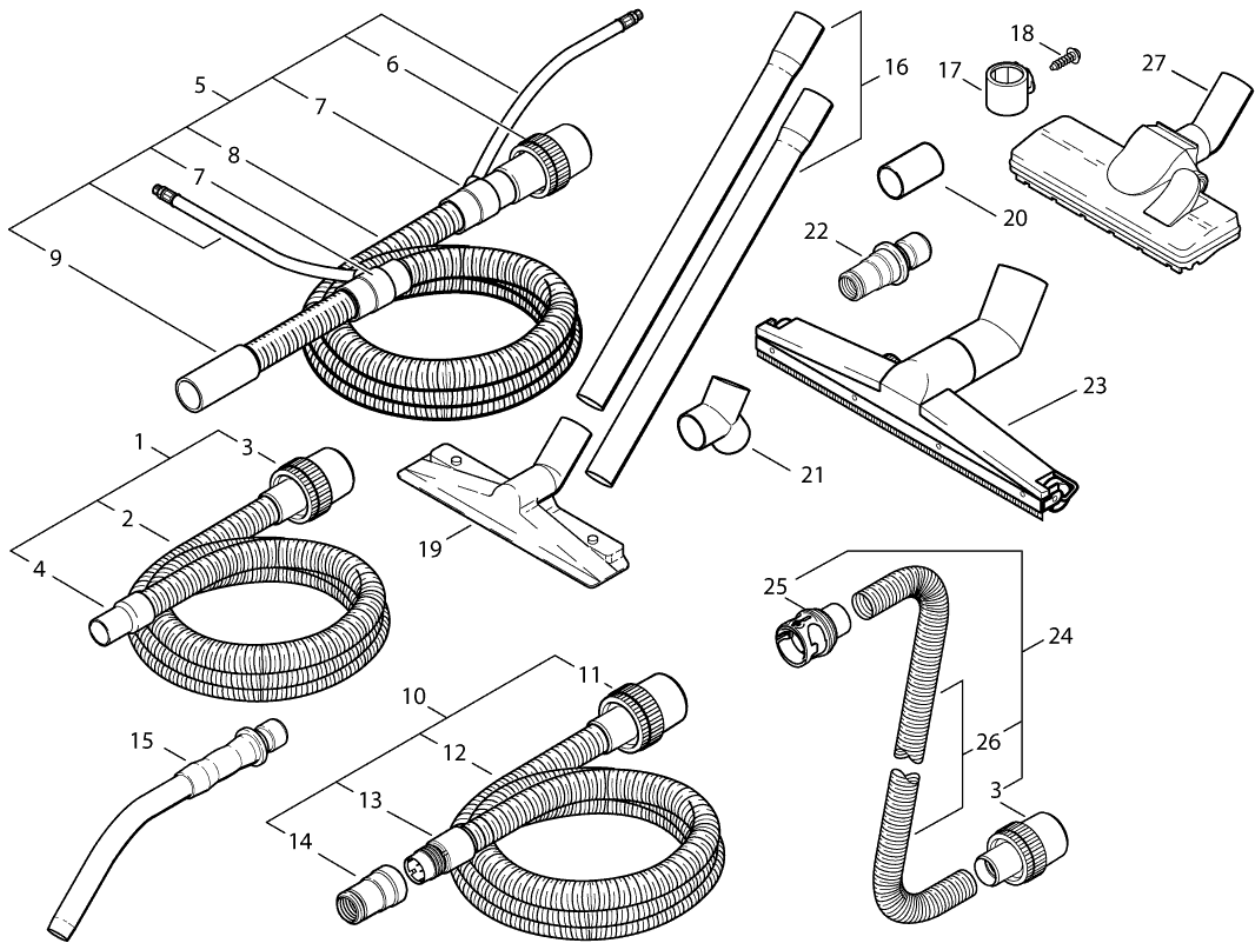
No.	Part No.	Qty.	Description	Part Note
1	302002021	1	EASY DISPOSAL CONTAINER	[1]
2	302002020	1	HANDLE W/ TAPE	[2]
3	302002001	1	GASKET 1115X50X2 5	[2]
4	302002022	1	FLAP DIRT-CONTAINER	[3]
5	302002023	1	TRANSPORT-RACK ATTIX 7 ED	[2]
6	302002006	1	PLUG D25	[1]
7	302002025	1	TROUGH 544X578X96	[1]
8	10028	1	SCREW KA50X14 WN1411	
9	302001898	1	SCREW HOOK	[1]
10	302002024	1	FOOT 579X74X48	[1]
11	302001629	1	DISPOSAL BAG SET25 "ATTI	[4]
12	107400257	1	ADAPTERRING ATTIX7-KIT	
13	302000349	2	LOCKING CLAMP ATTIX	
14	302001432	1	GASKET CONTAINER	

Part Notes:

- [1] - NO LONGER AVAILABLE
- [2] - STOCK COVERS GUARANTEE
- [3] - GUARANTEE DATE EXPIRED
- [4] - PRUNED WITH NO REPLACEMENT



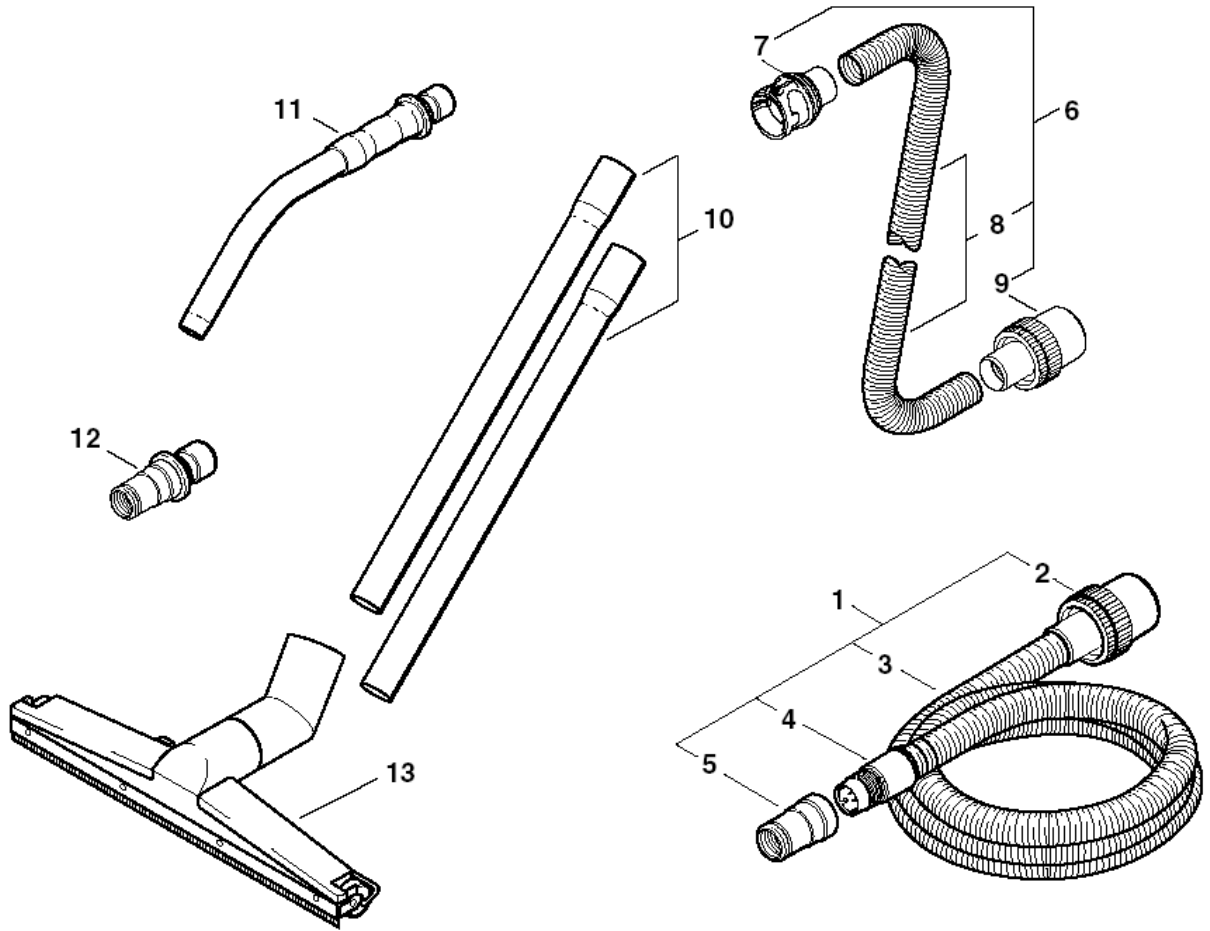
No.	Part No.	Qty.	Description	Part Note
1	302001437	1	FRAME BLACK ATTIX 7	
2	107401077	2	WHEEL 200X50 KIT	
3	3750	2	WHEEL CAPS TO SUIT TURBO	
4	107401054	1	CASTOR TURNABLE WITH BRAK	
5	302001706	1	HANDLE SET-1 ATTIX 7	



No.	Part No.	Qty.	Description	Part Note
00	302000477	1	COMBINATION FLOOR TOOL	
1	15805	1	HOSE UNIVERSAL D36 X 3000	
2	11985	1	SUCTION HOSE PER METRE 36	
3	15102	1	VACUUM SIDE SLEEVE 36MM	
4	11597	1	HOSE SLEEVE 36	
5	26601	1	COAXIAL VACUUM HOSE WITH	[1]
6	30928	1	HOSE SLEEVE AS#32/50	
7	26309	1	HOSE SLEEVE DN32	[2]
8	43502	1	32MM ANTISTATIC	
9	60033	1	HOSE SLEVE 5304-1 DN32	[3]
10	107406091	1	HOSE D27X3500 AS WITH	
11	15369	1	HOSE CUFF FOR SQ	
12	15326	1	HOSE AS 27 P/METER	
13	63509	1	HOSE SLEEVE Ø27	
14	107404520	1	TOOL ADAPTER D27/36-24 AS	
15	302000528	1	CURVED HAND TUBE İ36MM C	
15	46691	1	CURVED HAND PIECE	
16	302000529	1	SUCTION PIPE SALTIX 36MM	
16	107408074	1	EXTEN TUBE Ø36 2X505MM SS	
17	28546	1	STRAP FOR NOZZLE	
18	12400	1	SCREW 3.5X13	[2]
19	5147	1	FLOOR TOOL	
20	15953	1	ADAPTOR	
21	15331	1	Y PIECE	
22	302000535	1	TOOL SLEEVE QUICKSYSTEM İ	
23	15348	1	GROUND NOZZLE	
24	302001682	1	HOSED 36 X 5000 MM	
25	107417867	1	HOSE SLEEVE Ø36 AS QUICKSYSTEM	
26	15312	1	SUCTION HOSE 1 MTR	
27	302000477	1	COMBINATION FLOOR TOOL	

Part Notes:

- [1] - PRUNED - NO REPLACEMENT
 [2] - GUARANTEE DATE EXPIRED
 [3] - NO LONGER AVAILABLE



No.	Part No.	Qty.	Description	Part Note
1	107406091	1	HOSE D27X3500 AS WITH	
2	15369	1	HOSE CUFF FOR SQ	
3	15326	1	HOSE AS 27 P/METER	
4	63509	1	HOSE SLEEVE Ø27	
5	107404520	1	TOOL ADAPTER D27/36-24 AS	
5A	48750	1	TOOL ADAPTER Ø36 PU	[1]
6	302001682	1	HOSED 36 X 5000 MM	
7	107417867	1	HOSE SLEEVE Ø36 AS QUICKSYSTEM	
8	15312	1	SUCTION HOSE 1 MTR	
9	15102	1	VACUUM SIDE SLEEVE 36MM	
10	107408074	1	EXTEN TUBE Ø36 2X505MM SS	
11	46691	1	CURVED HAND PIECE	
12	302000535	1	TOOL SLEEVE QUICKSYSTEM I	
13	15348	1	GROUND NOZZLE	

Part Notes:

[1] - For ATTIX 761-2H XC 230/1/50 EU

