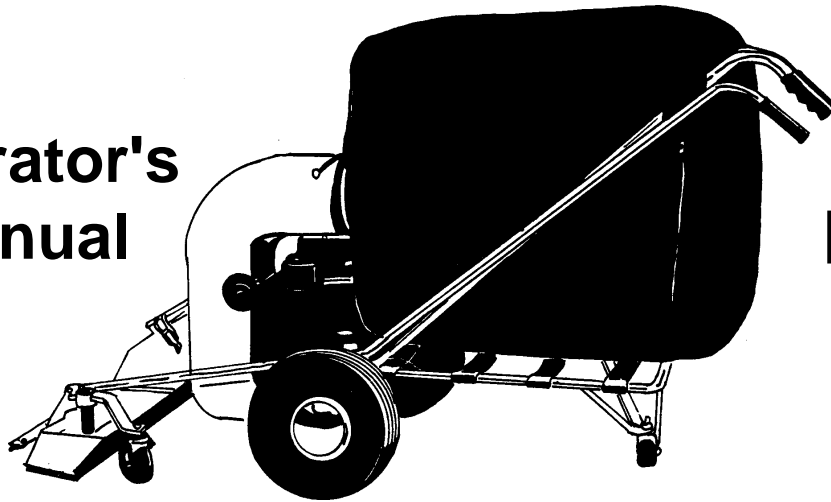




Operator's Manual



LV-30
LV-30H

READ THIS BOOK

This book has important information for the use and safe operation of this machine. Failure to read this book prior to operating or attempting any service or maintenance procedure to your Clarke Technology machine could result in injury to you or to other personnel; damage to the machine or to other property could occur as well. You must have training in the operation of this machine before using it. If your operator(s) cannot read this manual, have it explained fully before attempting to operate this machine.

Si Ud. o sus operadores no pueden leer el Inglés, se hagan explicar este manual completamente antes de tratar el manejo o servicio de esta máquina.

All directions given in this book are as seen from the operator's position at the rear of the machine.

For new books write to: ALTO U.S. Inc., 2100 Highway 265, Springdale, Arkansas 72764.



LV-30

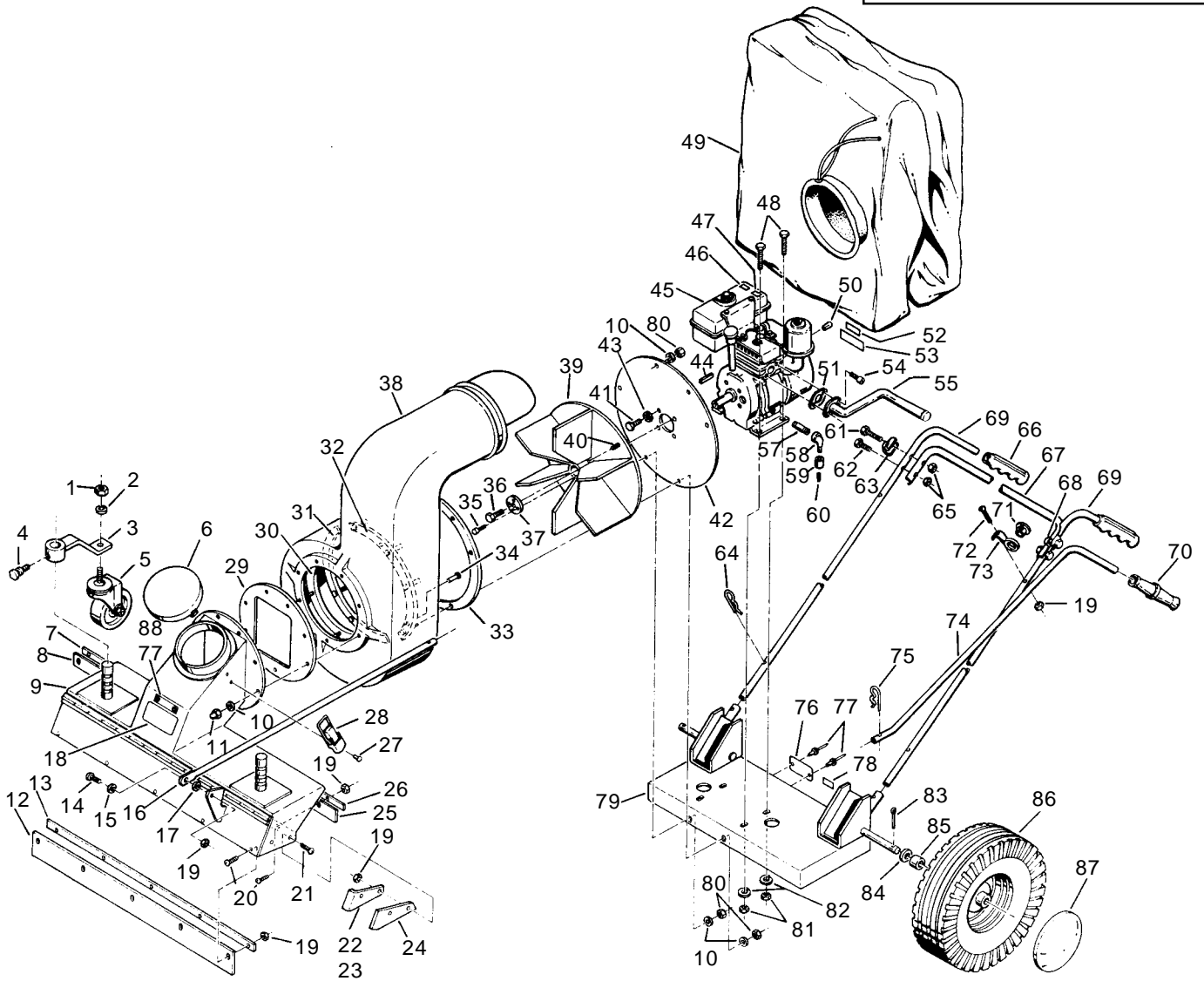
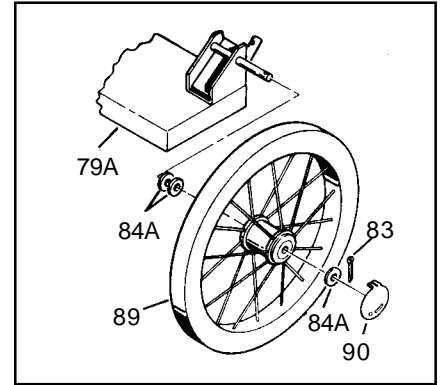
LV-30H

Section II

Parts and Service Manual

(78043D)

Model LV-30 & LV-30H Assembly Drawing - 6/99



Model LV-30 & LV-30H
Parts List - 6/99

| Ref. | Part No. | Description | Qty. | Ref. | Part No. | Description | Qty. |
|------|----------|-----------------------------------|------|------|----------|-------------------------------------|------|
| 1 | 920196 | Nut 1/2 - 13 Hex Jam | 2 | 45 | 50035A | Engine - Gas 5.5 hp Tecumseh | 1 |
| 2 | 980626 | Washer - 1/2 Lock | 2 | * | 53808A | Engine- Gas 5.5 hp Honda | 1 |
| 3 | 760842 | Bracket - Caster Support Asm. | 2 | 46 | 215110 | Label - Caution, Spanish | 1 |
| 4 | 766742 | Pin Assembly - Disconnect | 2 | 47 | 215103 | Label - Caution | 1 |
| 5 | 769744 | Caster - Front Support | 2 | 48 | 962158 | Screw - 5/16 - 18 x 7/8 Hex | 4 |
| 6 | 60050A | Cover - Intake | 1 | * | 962324 | Screw - 5/16-18 x 1.5 Hx Hd | 4 |
| 7 | 762043 | Clamp - Rear R.H. | 1 | 49 | 760660 | Bag - Filter Plain | 1 |
| 8 | 768542 | Scraper - R.H. | 1 | 50 | 765044 | Knob - Throttle Control - Svc. Only | 1 |
| 9 | 15711B | Housing Assembly - Intake | 1 | 51 | 34267A | Gasket - Muffler Mtg. (Honda Only) | 1 |
| 10 | 980646 | Washer - 1/4" | 15 | 52 | 215104 | Label - Warning | 1 |
| 11 | 920180 | Nut - Acorn 1/4 - 20 | 7 | 53 | 215106 | Label - Warning | 1 |
| 12 | 760741 | Blade - Door | 1 | 55 | 62812A | Extension Assembly Honda | 1 |
| 13 | 762047 | Clamp - Door Blade | 1 | 57 | 755721 | Nipple - 1/4-18 Short | 1 |
| 14 | 962483 | Screw #10-24 x 5/8 | 1 | 58 | 822806 | Elbow - 90° Street | 1 |
| 15 | 980982 | Washer #10 x 1/2 | 1 | 59 | 170266 | Coupling - 1/4 NPT | 1 |
| 16 | 763945 | Handle - Lower | 1 | 60 | ref. | Drain Plug (part of engine) | 1 |
| 17 | 768242 | Spacer - Handle | 1 | 61 | 85702A | Screw - 1/4-20 x 1 5/8 Hex St. Cap | 2 |
| 18 | 73364A | Label | 1 | 62 | 85701A | Screw - 1/4-20 x 1 1/2 Hex St. Mach | 2 |
| 19 | 920296 | Nut - #10-24 Elastic Stop | 16 | 63 | 764541 | Hook - Bag Right | 1 |
| 20 | 84808A | Screw #10-24 x 3/4 Rd. Hd. | 10 | 64 | 766740 | Pin - Locking | 2 |
| 21 | 962109 | Screw #10-24 x 5/8 | 4 | 65 | 920284 | Nut - 1/4-20 Stop | 4 |
| 22 | 762045 | Clamp - R.H. Shield | 1 | 66 | 763740 | Grip - Handle | 2 |
| 23 | 762046 | Clamp - L.H. Shield | 1 | 67 | 761340 | Brace - Handle | 1 |
| 24 | 767841 | Shield | 2 | 68 | 764540 | Hook - Bag Left | 1 |
| 25 | 768543 | Scraper - L.H. | 1 | 69 | 763940 | Handle | 2 |
| 26 | 762044 | Clamp - Rear L.H. | 1 | 70 | 763701 | Grip - Handle | 1 |
| 27 | 930086 | Rivet - 3/16 x .450 | 4 | 71 | 761140 | Bushing - Handle | 1 |
| 28 | 682006 | Lid Clamp Assembly | 2 | 72 | 962009 | Screw #10-24 x 1 1/4 Rd St. Mach | 1 |
| 29 | 763444 | Gasket - Intake Hsg. Flange | 1 | 73 | 763840 | Guide - Handle | 1 |
| 30 | 66909A | Retainer Assembly | 1 | 74 | 763946 | Handle - Upper | 1 |
| 31 | 66908A | Retainer Assembly | 1 | 75 | 766744 | Pin - Locking | 1 |
| 32 | 66907A | Retainer Assembly | 1 | 76 | | Plate - Serial | 1 |
| 33 | 763443 | Gasket - Impeller Housing | 1 | 77 | 930112 | Rivet - 1/8 Pop | 4 |
| 34 | 930113 | Rivet - Pop 1/8 | 5 | 78 | 805160 | Label - Inspection | 1 |
| 35 | 962241 | Screw - #10-24 x 1/2 | 4 | 79 | 763264 | Frame Assembly- Small Wheel | 1 |
| 36 | 962747 | Screw - 3/8-24 x 3/4 Nylok Hex Hd | 1 | 79a | 763263 | Frame Assembly - Large Wheel | 1 |
| * | 962867 | Screw 7/16 - 20 x 1 Hex Head | 1 | 80 | 920208 | Nut - 1/4-20 | 8 |
| 37 | 762050 | Washer - Clamp Special | 1 | 81 | 920110 | Nut - 5/16-18 Elastic Stop | 4 |
| * | 980013 | Washer - Clamp Honda | 1 | 82 | 980651 | Washer - 5/16 Plain | 4 |
| 38 | 35210B | Housing - Impeller | 1 | 83 | 925006 | Pin - 1/8 x 1 1/4 Lg. Cotter | 2 |
| 39 | 764842 | Impeller Tecumseh | 1 | 84 | 980679 | Washer - 13/16 x 1 1/4 x 1/8 Flat | 2 |
| * | 764841 | Impeller Honda | 1 | 85 | 768244 | Spacer - Wheel | 2 |
| 40 | 962593 | Screw - 1/4-20 x 3/8 Nylok | 1 | 86 | 769701 | Wheel - Assembly | 2 |
| 41 | 962603 | Screw - 5/16 - 24 x 1 1/4 Hex. | 4 | 87 | 194446 | Cap Hub w/Retainer | 2 |
| 42 | 766664 | Plate Assembly - Flange | 1 | 88 | 765141 | Label - Caution | 1 |
| 43 | 980652 | Washer - 5/16 Standard Lock | 4 | 89 | 769740 | Wheel - Large | 2 |
| 44 | 915570 | Key - 1/4 x 1/4 x 2 1/4 Square | 1 | 90 | 761541 | Hub - Cap | 2 |

NOTE: □ indicates a change has been made since last publication of this manual.

* Indicates parts that are for the LV 30H (Honda engine) only.