

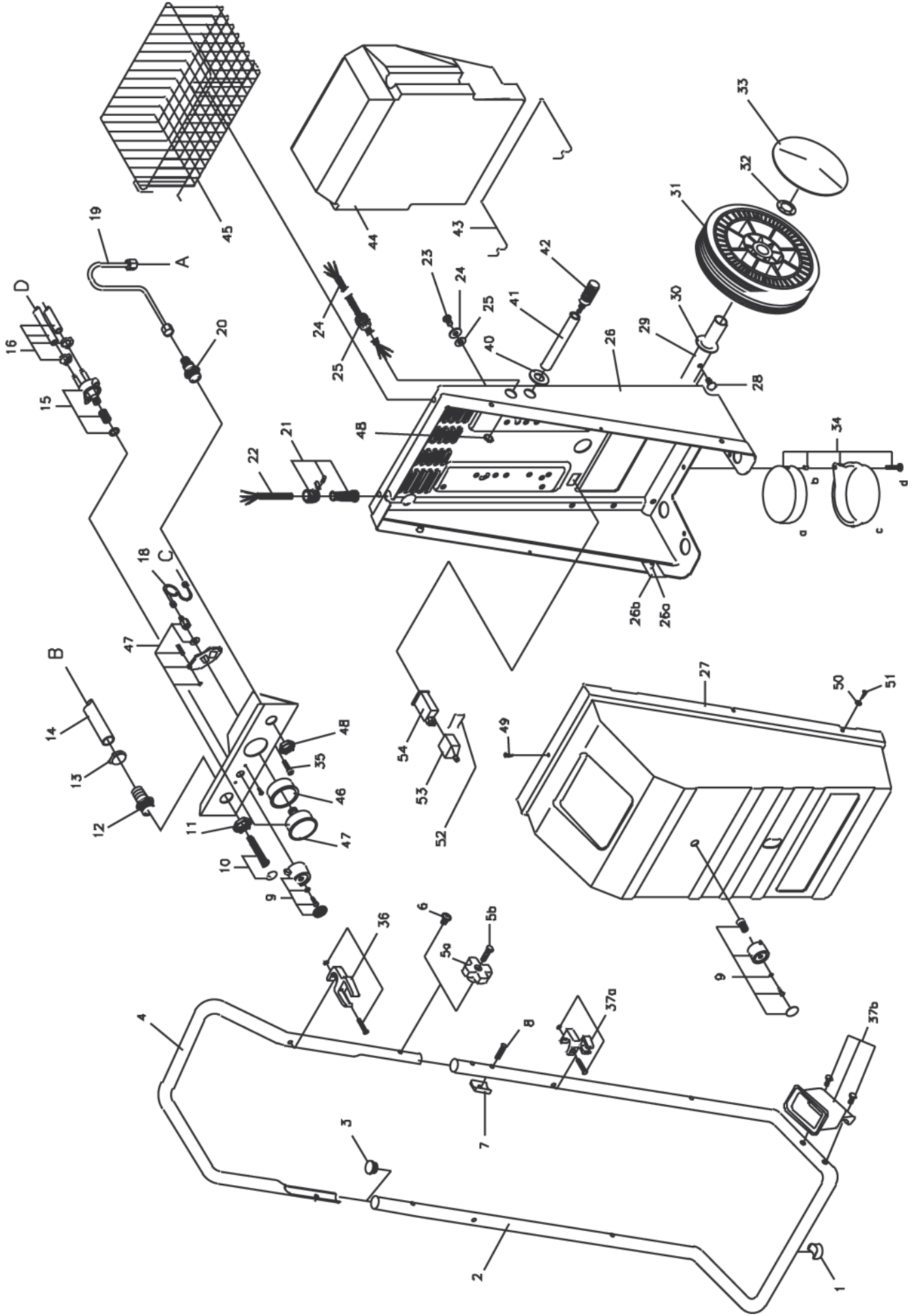
---

# N/G-640A/660A/690A

---

**Reservedelsliste**  
**Spare parts list**  
**Ersatzteilliste**  
**Liste de pièces détachées**

Karosse 640/660/690 / Body 640/660/690 / Karosserie 640/660/690 / Carrosserie 640/660/690 . . .	2
Pumpe / Pump / Pumpe / Pomp . . . . .	7
Motor 640/660/690 / Motor 640/660/690 / Motor 640/660/690 / Moteur 640/660/690 . . . . .	11
EI-komponenter 640/660/690 / Electric components 640/660/690 / Elektrische komponente 640/660	15
Pistol 98 / Pistol 98 / Pistole 98 / Pistolet 98 . . . . .	18
Pistol / Pistol / Pistole / Pistolet . . . . .	20
Spulerør / Lances / Lanzen / Lance . . . . .	22
Pistol RL30 / Pistol RL30 / Pistole RL30 / Pistolet RL30 . . . . .	27



# Karosse 640/660/690 / Body 640/660/690 / Karosserie 640/660/690 / Carrosserie 640/660/690

Pos.	Ref. no.	Betegnelse Description	Bezeichnung Description	640 A	660 A	690 A
0	06160074	EL-STIK, 10AMP-380V *DK ELECTRIC PLUG, 10AMP-380V *DK	EL-STECKER STOSSFEST GRUEN/ROT *DK PRISE EL.RESISTANT AU CHOC *DK	1	1	1
0	06200429	LAG FOR KEMITANK M. HJUL LID FOR DETERGENT TANK	DECKEL F. REINIGUNGSMITTEL TANK COUVERCLE P. RESERVOIR DE DETERGENT AVEC	1	1	1
0	06300710	TRANSFER "OMLØB" TRANSFER "BY PASS"	KLEBESTREIFEN AUTOCOLLANT, BY-PASS 15 MIN. AU MAXIMUM	1	1	1
0	06301097	TYPESKILT, 45X65 MM TYPE PLATE, 45X65 MM	TYPSCILD GRAU AUTOCOLLANT G-480	1	1	1
0	06301199	TRANSFERS FOR KEMIVENTIL, G600P/660 TRANSFERS FOR DETERGENT VALVE, G600P/660	KLEBSTREIFEN F. REINIGUNGSMITTELVENTIL AUTOCOLLANT POUR VANNE DE DETERGENT	1	1	1
0	06301446	TRANSFERS VANDMÆNGDE/VARMETRIN TRANSFERS WATER QUANT./HOT BLOCK	TRANSFERS WASSERMENGE/VAERMESTUFEN AUTOCOLLANTS DEBIT D'EAU/THERMOBLOC	1	1	1
0	06301450	TRANSFERS ON-OFF TRANSFERS ON-OFF	TRANSFERS START/STOPP G-660 AUTOCOLLANT MARCHE/ARRETHE/ARRET G-660	1	1	1
0	06301663	TRANSFER "CE" TRANSFERS "CE"	TRANSFERS CE MARKE AUTOCOLLANT	1	1	1
0	06301808	TRANSFERS, 640 TRANSFERS, 640	TRANSFER AUTOCOLLANT N 640	1		
0	06301832	TRANSFERS, NF660A TRANSFERS, NF660A	AUTOCOLLANT, NF660A	1		
0	06301896	TRANSFERS, G640A TRANSFERS, G640A	AUTOCOLLANT, G640A	1		
0	06301897	TRANSFERS, G660A TRANSFERS, G660A	AUTOCOLLANT, G660A	1		
0	06301898	TRANSFERS, G690A TRANSFERS, G690A	AUTOCOLLANT, G690A			1
0	06301922	TRANSFERS GERNI TRANSFERS GERNI	KLEBSTREIFEN GERNI AUTOCOLLANT GERNI	1	1	1
01	06200230	AFSTANDSSTYKKE	SOCKEL F/KIPPSTAENDER SCHWARZ G-175 BOUT G-175	1	1	1
02	06050885	STØTTEBEN, Ø25X2054 SUPPORTING LEG, Ø25X2054	KIPPSTAENDER BIPIED	1	1	1
03	06200064	DUPSKO, 25 CAP, 25	KAPPE BOU	2	2	2
04	06050886	KØREHANDTAG, Ø25X21124 OPERATION HANDLE, Ø25X21124	FAHRHANDGRIFF POIGNEE G 640 - 660 - 690	1	1	1
05A	06200206	HANDHJUL HAND WHEEL	HANDRAD MALETTE DE SERRAGE	2	2	2
05B	06070287	SÆTSKRUE, M8X20 SET SCREW, M8X20	VIS D'ARRET, M8X20	2	2	2
06	06070011	SKRUE, M8X30 SCREW, M8X30	SETZSCHRAUBE, GALV. E	2	2	2
07	06200204	AFSTANDSKLODS SPACER BLOCK	STUELZE BLOC INTERMEDIAIRE	4	4	4

# Karosserie 640/660/690 / Body 640/660/690 / Carrosserie 640/660/690

Pos.	Ref. no.	Bezeichnung Description	640 A	660 A	690 A
08	06070386	SKRUE, 6X40 SCREW, 6X40	4	4	4
09	06261769	PLASTKNAPKIT BUTTON KIT, PLASTIC	1	1	2
10	06260825	VANDFILTERKIT, G-100 WATER FILTER KIT, G-100	1	1	1
11	06180384	KONTRAMØTRIK, 3/4" COUNTER NUT, 3/4"	1	1	1
12	06180835	TILGANGSNIPPEL, 29X58 INLET NIPPLE, 29X58	1	1	1
13	06110471	SPÆNDEBÅND, 14-32 RETAINING RING, 14-32	2	2	2
14	06110463	SLANGE, 3/4" X 275 HOSE, 3/4" X 275	1	1	1
15	06211201	PLASTVENTIL KOMPLET PLASTIC DETERGENT VALVE CPL.	1	1	1
16	06261436	KIT FOR KEMISLANGE , 660/401 KIT FOR DETERGENT HOSE , 660/401	1	1	1
18	06261435	MANOMETERRØR KPL., G660 PIPE FOR PRESSURE GAUGE, CPL., G660	1	1	1
19	06261434	AFGANGSRØR FLOWSTYRING OUTLET PIPE FLOW CONTROL	1	1	1
20	06180468	AFGANGSSTUDS, 24X52 OUTLET SOCKET, 24X52	1	1	1
21	06261857	KABELGENNEMFØRINGSKIT, 3/4X1,5 CABLE GROMMET KIT, 3/4X1,5	1	1	1
21	06261858	KABELGENNEMFØRINGSKIT, 3/4X2,5 CABLE GROMMET KIT, 3/4X2,5	1	1	1
22	06160708	TILGANGSKABEL GUMMI, 4X1.5X10000 INLET CABLE RUBBER, 4X1.5X10000	1	1	1
22	06160709	TILGANGSKABEL GUMMI, 4X2.5X10000 INLET CABLE RUBBER, 4X2.5X10000	1	1	1
22	06160841	TILGANGSKABEL GUMMI, 4X4.0X8000 INLET CABLE RUBBER, 4X4.0X8000	1	1	1
23	06070394	SKRUE, 8X16 SCREW, 8X16	4	4	4
24	06080201	SPÆNDESKIVE, M8 TENSION DISC, M8	4	4	4
25	06080156	GUMMISKIVE, Ø20XØ8X1,5 RUBBER DISC, Ø20XØ8X1.5	4	4	4
26	06211632	BUNDRAMME, KPL., G 3/4/660 BOTTOM FRAME, CPL., G 3/4/660	1	1	1
26A	06070509	POP-NUT STÅL, 6M/M POP NUT STEEL, 6MM	2	2	2

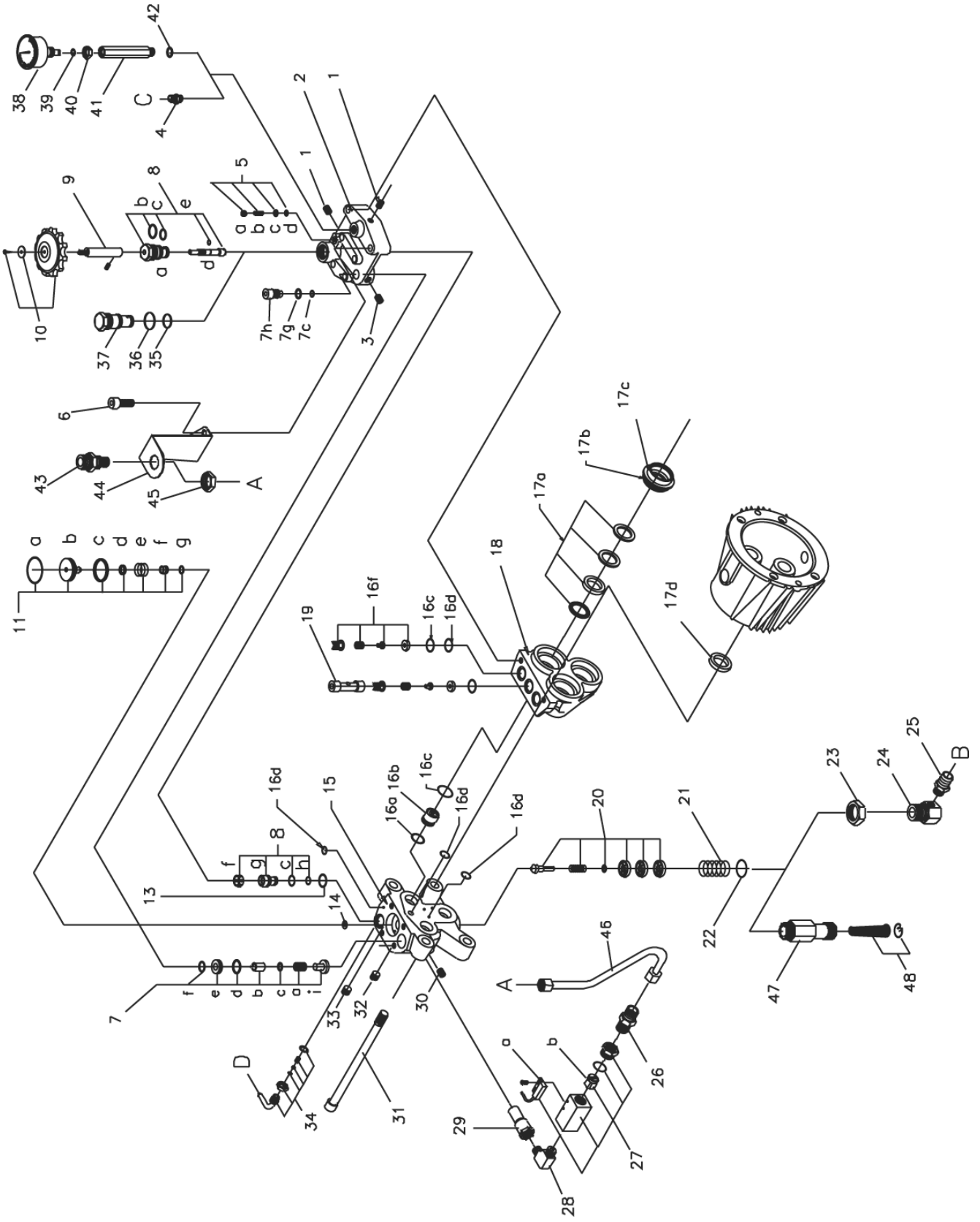
## Karosse 640/660/690 / Body 640/660/690 / Karosserie 640/660/690

Pos.	Ref. no.	Betegnelse Description	Bezeichnung Description	640 A	660 A	690 A
26B	06061249	BESLAG FOR KAROSSE, 33X39X1,0 FITTINGS FOR BODY, 33X39X1,0	BESCHLAG F. KAROSSERIE ARMATURE P. CARROSSE	2	2	2
27	06240242	KAROSSE GRA, N660 BODY GREY, N660	KAROSSERIE GRAU N-660 CARROSSERIE N-640 - 660 -	1	1	1
27	06240282	KAROSSE GRØN, G600 RAL 6005 BODY GREEN, G600 RAL 6005	CARROSSERIE G 600	1	1	1
28	06070394	SKRUE, 8X16 SCREW, 8X16	TAPTITE 6KT GALV. VIS	2	2	2
29	06050887	HJULAKSEL, Ø25X2442 WHEEL AXLE, Ø25X2442	RADWELLE ARBRE DE ROUE	1	1	1
30	06080075	SPÆNDESKIVE, 45X25.5X1.5 TENSION DISC, 45X25.5X1.5	FEDERSKEIBE F. RAD, GALV. RONDELLE DE SERRAGE POUR UUE	2	2	2
31	06130223	HJUL, 25/47.5-250/55 WHEEL, 25/47.5-250/55	ROUE 2500/2500/2700A	2	2	2
32	06080136	LÅSESKIVE U/KAPPE, Ø25 MM LOCK WASHER WITHOUT CAP, Ø25 MM	FEDERTELLERSKEIBE OHNE KAPPE BAGUE DENTEEON ON	2	2	2
33	06130224	NAVKAPSEL GRØN, RAL 6005 HUB CAP GREEN, RAL 6005	ENJOLIVEUR ROUE "VERT"	2	2	2
33	06130225	NAVKAPSEL BLÅ, RAL 5013 HUB CAP BLUE, RAL 5013	ENJOLIVEUR BLEU, RAL 5013	2	2	2
34	06261585	OLIEOPSAMLINGSBÅKKE KPL. OIL ACCUMULATION TRAY CPL.	OELANSAMLUNGSVORRICHTUNG KPL. BASSIN A GAS-OIL CPL.	1	1	1
34A	06120481	SVAMP SPONGE	OELANSAMLUNGSSCHWAMM MOUSSE RECUPERATION D"HUI	1	1	1
34B	06080225	GEVINDBØSNING, M5 THREAD BUSHING, M5	GEWINDEBUECHSE ECROU PRISONNIER	1	1	1
34C	06200378	OLIEOPSAMLINGSBÅKKE OIL RESERVOIR	OELANSAMLUNGSBÅKKE RECEPTACLE A GAS-OIL	1	1	1
34D	06070822	SKRUE, 5X16 SCREW, 5X16	SCHRAUBE VIS 5X16	1	1	1
35	06070510	UNBRACO SKRUE, M10X40 ALLEN SCREW, M10X40	IMBUSSBOLZEN, GALV. BOULON G 600	2	2	2
36	06261765	HOLDER FOR PISTOL KPL. HOLDER FOR PISTOL	HALTER F. LANZE SUPPORT DE LANCE	1	1	1
37A	06260828	SPULERØRSHOLDER LANCE HOLDER	LANZENHALTER G-100 SUPPORT LANCE G-100 G-100	1	1	1
37B	06261766	HOLDER FOR SPULERØR HOLDER FOR LANCE	HALTER F. LANZE SUPPORT DE LANCE	1	1	1
40	06120336	GUMMIGENNEMFØRING, Ø14XØ24 RUBBER GROMMET, Ø14XØ24	GUMMIDURCHFUEHRUNG TRAVERSEE CAOUTCHOUC	1	1	1
41	06110423	KEMISLANGE, 1/4" X 1450 MM DETERGENT HOSE, 1/4" X 1450 MM	REINIGUNGSMITTELSCHLAUCH, AUSSEN G-600 TUYAU	1	1	1
42	06100316	FILTER FOR KEMI DETERGENT FILTER	REINIGUNGSMITTELFILTER ASPIRATION DETERGENT	1	1	1

# Karosse 640/660/690 / Body 640/660/690 / Karosserie 640/660/690 / Carrosserie 640/660/690

Pos.	Ref. no.	Betegnelse Description	Bezeichnung Description	640 A	660 A	690 A
43	06040190	RØRBJØJLE FOR KEMIDUNK, Ø6X650 PIPE HOLDER FOR DETERGENT TANK, Ø6X650	ROHRSCHELLE FUER REINIGUNGSMITTEL TANK PORTE TUYAUDE DETERGENT DE DETERGENT		1	
43 -	06261474	KEMITANK F. MASK MONTAGE, 10 L DETERGENT TANK FOR MACHINE MOUNTING, 10 L	REINIGUNGSMITTEL TANK RESERVOIR DE DETERGENT		1	
44	06150164	TANK KEMI/VAND/BRÆNDSTOF TANK DETERGENT/WATER/FUEL	TANK REINIGUNGSMIT./WASSER/BRENNSTOFF RESERVOIR DET./EAU/COMBU.		1	
45	06290022	KURV BASKET	PANIER POUR 401 ET 6000		1	
46	06200401	RING FOR MANOMETER RING FOR PRESSURE GAUGE	RING FÜR MANOMETER ANNEAU	1	1	1
47	06220046	TURBO MANOMETER PRESSURE GAUGE W/HOLDER, 250/ 3600 BAR/PSI/ETP	TURBO MANOMETER MANOMETRE	1	1	1
48	06190062	MØTRIK, 27X10 NUT, 27X10	GEGENMUTTER CONTRE-ECROU LAITON M22 X	1	1	1
49	06070874	SKRUE, 4,2X13 HFC 198 SCREW, 4,2X13 HFC 198	VIS, 4,2X13 HFC 198	1	1	1
50	06080261			2	2	2
51	06070874	SKRUE, 4,2X13 HFC 198 SCREW, 4,2X13 HFC 198	VIS, 4,2X13 HFC 198	2	2	2
52	06280201	LÅSEBJØJLE LOCK FITTINGS	GARNITURE DE SERRURE	1	1	1
52-54	06262329	TIMETÆLLER KIT, 401/600 HOUR METRE KIT, 401/600	COMPTER HORAIRE KIT, 401/600	1	1	1
53	06200557	BESKYTTELSESHÆTTE PROTECTION CAP	MANCHON P/ENROULEUR	1	1	1
54	06220055	TIMETÆLLER, 230V HOUR METRE, 230V	COMPTER HORAIRE, 230V	1	1	1

# Pumpe / Pump / Pumpe / Pomp



## Pumpe / Pump / Pumpe / Pomp

Pos.	Ref. no.	Betegnels Description	Bezeichnung Description	640 A	660 A	690 A
0	06261445	O-RINGSKIT FOR PUMPE, 600/660/5/6000 O-RING KIT FOR PUMP, 600/660/5/6000	KIT O-RINGE F. PUMPE KIT JOINT TORIQUE P.POMPEPOMPE	1	1	1
0	06262255	TOPSTYKKE KOMPLET CYLINDER HEAD, CPL., 640	CULASSE DE CYLINDRE, CPL., 640	1		
0	06262256	TOPSTYKKE, KPL., 660 CYLINDER HEAD, CPL., 660	CULASSE DE CYLINDRE, CPL., 660		1	
0	06262257	TOPSTYKKE, KPL., G690 CYLINDER HEAD, CPL., G690	CULASSE DE CYLINDRE, CPL., G690			1
0	06262390	TOPSTYKKE, KPL., 660 CYLINDER HEAD, CPL., 660	CULASSE DE CYLINDRE, CPL., 660		1	
01	06030554	RØRPROP, 1/8" PLUG FOR PIPE, 1/8"	ROHRSTOPFEN RACCORDE	3	3	3
02	06180755	TRYKMANIFOLD, 600 PRESSURE MANIFOLD, 600	DRUCKMANIFOLD COLLECTEUR PRESSION G 600	1	1	1
03	06180998	RØRPROP, 1/8" PLUG FOR PIPE, 1/8"	ROHRPFROPFEN BOUCHON DE TUBENE EXTERIENE EXTERIEUR	1	1	1
04	06030740	BRYSTNIPPEL, 1/4 BREAST NIPPLE, 1/4"ØKRG X ?4	BRUSTNIPPEL EV 68F RACCORDE A VIS	1	1	1
05	06261131	JUSTERSKRUE ADJUSTING SCREW	JUSTIERSCHRAUBE F. MANOMETERDRUCK VIS REGLAGE PRESS.OUVERT.N D"OUVERTURE	1	1	1
05A	06080057	MØTRIK, M5 NUT, M5	MUTTER MESS ECROU LAITON	1	1	1
05B	06070138	UNBRACO PINOLSKRUE, M5X16 ALLEN POINTED SCREW, M5X16	IMBUSSREITSTOCKSCHRAUBE, ROSTFREI VIS PIVOTQUE, INOX QUE, INOX	1	1	1
05C	06080022	SPÆNDESKIVE, M5 TENSION DISC, M5	FEDERSKEIBE MESSING RONDELLE DE SERRAGE LAITO	2	2	2
06	06070510	UNBRACO SKRUE, M10X40 ALLEN SCREW, M10X40	IMBUSSBOLZEN, GALV. BOULON G 600	6	6	6
07	06260899	SIKKERHEDSVENTILKIT SAFETY VALVE KIT, G 600	SICHERHEITSVENTILKIT KIT VANNE BY PASS G-600-6-600		1	1
07	06261006	SIKKERHEDSVENTILKIT SAFETY VALVE KIT	SICHERHEITSVENTILKIT KIT VANNE SECURITE	1		
08	06261083	KIT VANDMENGDEREGULERING KIT FOR WATER REGULATION	KIT F. WASSERREG. NACH 01.10.89 KIT REGULATEUR DEBIT D'EAU APRES 01'1089		1	
08	06261431	SERVICEKIT INJECTORDYSE, G640 SERVICE KIT INJECTOR NOZZLE, G640	KIT F. INJEKTORDYSE KIT POUR GICLEURR G-640 R G-640	1		
08	06261951	SERVICEKIT INJECTORDYSE SERVICE KIT INJECTOR NOZZLE	SERVICEKIT F. INJEKTORDYSE KIT GICLEUR INJECTEUR			1
09	06181080	SPINDELFORLÆNGER, Ø13X81 SPINDLE EXTENSION, Ø13X81	SPINDELVERLÆNGERER RALLONGE		1	
10	06260978	REGULERINGSHÅNDTAGSKIT REGULATION HANDLE KIT	KIT F. REGULERINGSHANDGRIFF KIT REGULATEUR 1/4-3,5 G		1	
11	06260900	OMLØBSVENTILKIT BY-PASS VALVE KIT	UMLAUFVENTILKIT KIT VANNE BY-PASS G600			1

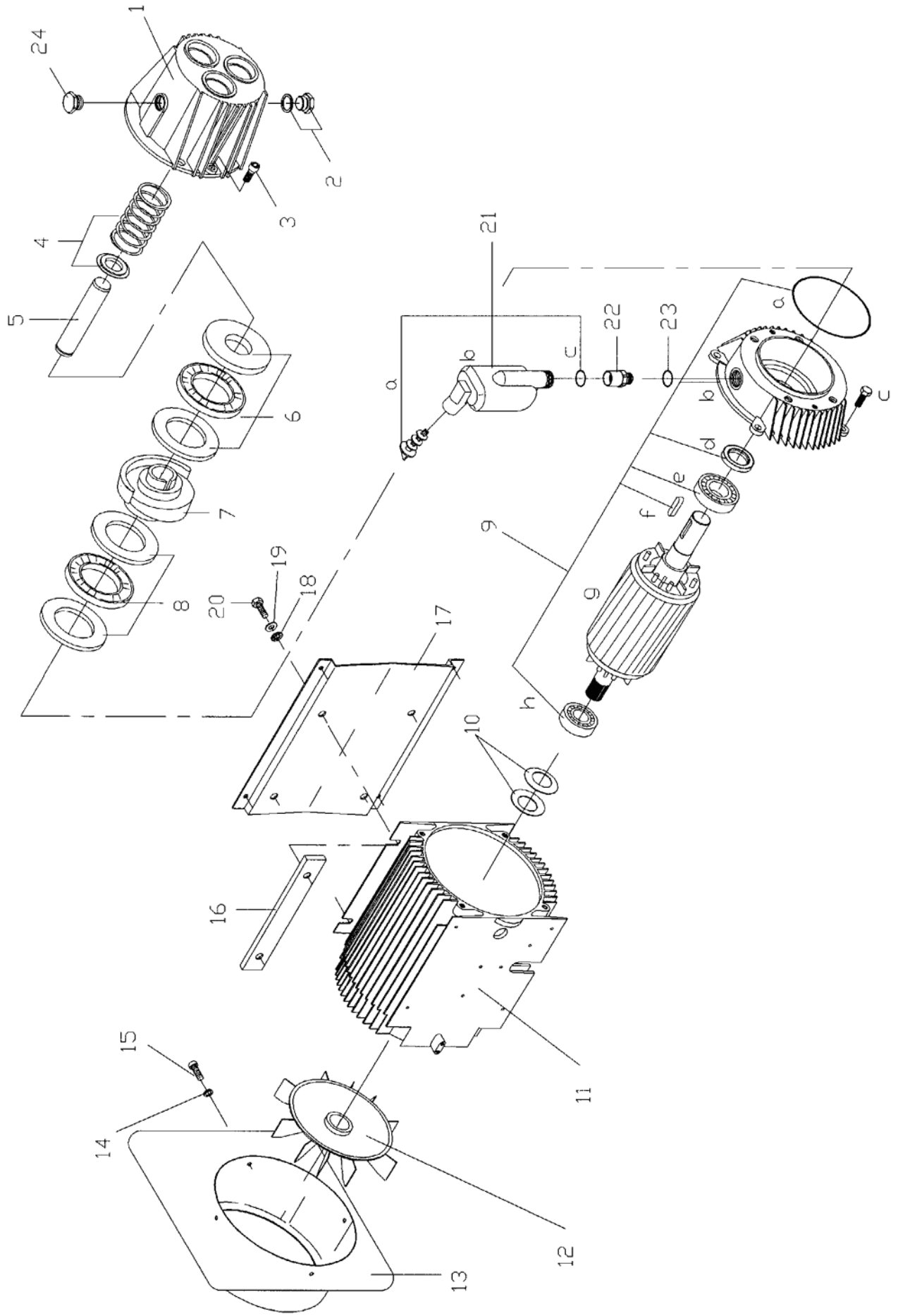


## Pumpe / Pump / Pumpe / Pompe

Pos.	Ref. no.	Betegnelse Description	Bezeichnung Description	640 A	660 A	690 A
11	06261901	OMLØBSVENTILKIT BY-PASS VALVE KIT	UMLAUFVENTILKIT KIT VANNE BY PASS	1		
11	06261902	OMLØBSVENTILKIT BY-PASS VALVE KIT	UMLAUFVENTILKIT KIT VANNE BY BASS			1
13	06120415	O-RING, 17.17X1.78 O-RING, 17.17X1.78	O-RING JOINT TORIQUE	1	1	1
14	06080188	FORMINDSKERSKIVE, 12X5X0.5 REDUCER DISC, 12X5X0.5	REDUZIERSCHEIBE, ROSTFREI RONDELLE		1	
14	06080218	FORMINDSKERSKIVE, Ø12XØ3,0X0.5 REDUCER DISC, Ø12XØ3,0X0.5	VERKLEINERUNGSSCHEIBE RONDELLE			1
15	06180749	PUMPEHOVED, G600 PUMP HEAD, G600	PUMPENKOPF CULASSE G 600	1	1	1
16	06260894	VENTILKIT VALVE KIT	VENTILKIT KIT POMPE A EAU CLAPET G-WER	1	1	1
16-17	06261284	KIT FOR PUMPE, 617/6000 KIT FOR PUMP, 617/6000	KIT F. PUMPE G-617+P+ST/G-6000 KIT POMPE A EAU G600/6000T G-6000	1		
16-17	06261446	KIT FOR PUMPE, 660/5000 KIT FOR PUMP, 660/5000	KIT F. PUMPE G-660/5000 KIT POMPE A EAU (NOUVEAU)		1	1
17	06260895	MANCHETKIT CUP KIT FOR STEEL PISTON, G617/620/640	MANCHETTKIT F. G-617/620/640 KIT COUPELLES G 6000/640 0/640	1		
17	06261444	MANCHET KIT FOR KERAMIKSTEMPEL CUP KIT FOR CERAMIC PISTON	KIT F. MANSCHEITTE G-660/5000 KIT POMPE A EAU COUPELLES000		1	1
18	06180750	CYLINDERSTYKKE CYLINDER PIECE	ZYLINDERSTUECK CULASSE G 600	1	1	1
19	06180753	AFSTANDSSTYKKE, Ø16X55 DISTANCE PIECE, Ø16X55	ZWISCHENSTUECK ENTRETOISE G 600	1	1	1
20	06261005	KONTRAVENTILKIT, G-600 NON-RETURN VALVE KIT, G-600	RUECKSCHLAGVENTILKIT KIT VANNE ANTI RETOURG-60G-600	1	1	1
21	06280115	FJEDER, 2X23.75X40X4 SPRING, 2X23.75X40X4	FEDER RESSORT	1	1	1
23	06181129	MØTRIK, 36X8 NUT, 36X8	GEGENMUTTER ECROU G-3000	1	1	1
24	06181128	FORDELERKLODS, 32X52 DISTRIBUTOR BLOC, 32X52	VERTEILERKLOTZ BLOC DE DISTRIBUTION	1	1	1
25	06180943	SLANGENIPPEL, 22X35 HOSE NIPPLE, 22X35	SCHLAUCHNIPPEL RACCORD DE TUYAU	1	1	1
26	06030037	HYDRAULIKFORSKR, 3/8"-10/12 HYDRAULIC SCREWED CONNECTION, 3/8"-10/12	HYDRAULIKVERSCHRAUBUNG JOINT HYDRAULIQUE	1	1	1
27	06261447	KIT FOR FLOWSWITCH KIT FOR FLOW SWITCH	KIT STROEMUNGSWAECHTER KIT FLOW SWITCH 660/690		1	1
27	06261895	FLOWSWITCH KPL., 640 FLOW SWITCH CPL., 640	KIT F. FLOW SWITCH KIT FLOW SWITCH 640	1		
27A	06170182	FØLER FOR FLOWSWITCH REED-SWITCH	REED-SCHALTER REED CONTACTEUR	1		

## Pumpe / Pump / Pumpe / Pomp

Pos.	Ref. no.	Betegnelse Description	Bezeichnung Description	640 A	660 A	690 A
27B	06262298	FLOWSTEMPEL M/MAGNET,640 FLOW PISTON, 640	PISTON DE FLOW, 640	1		
27B	06262433	FLOWSTEMPEL M.MAGNET			1	1
28	06030727	WINKELNIPPEL, 3/8"X3/8" ANGLE NIPPLE, 3/8"X3/8"	WINKELNIPPEL 285B COUDE 90 DEGRES SORTIE HP	1	1	1
29	06180970	AFSTANDSSTYKKE F. TOPSTYK DISTANCE NIPPLE, 22X55	DISTANZNIPEL RACCORD SORTIE POMPE HP	1	1	1
30	06030472	PROP MESSING, 1/4" BRASS PLUG, 1/4"	PFPROPEN MESSING BOUCHON	1	1	1
31	06070492	UNBRACO SKRUE, M12X200 ALLEN SCREW, M12X200	IMBUSSBOLZEN BOULON 12X200 G 600	4	4	4
32	06030642	RØRPROP, 3/8" PLUG FOR PIPE, 3/8"	ROHRPFROPFEN BOUCHON DE TUBE	1	1	1
33	06030661	RØRPROP, 1/8" PLUG FOR PIPE, 1/8"	ROHRSTOPFEN BOUCHON	1	1	1
34	06260902	KUGLEKONTRAVENTILKIT NON-RETURN BALL VALVE KIT	KUGELRUECKSCHLAGVENTIL KIT VANNE ANTI-RETOUR G 6 BILLE	1	1	1
35	06120182	O-RING, 16X2 O-RING, 16X2	O-RING JOINT TORIQUE	1		1
36	06120270	O-RING, 15.6X1,78 O-RING, 15.6X1,78	O-RING JOINT TORIQUE	1		1



## Motor 640/660/690 / Motor 640/660/690 / Moteur 640/660/690

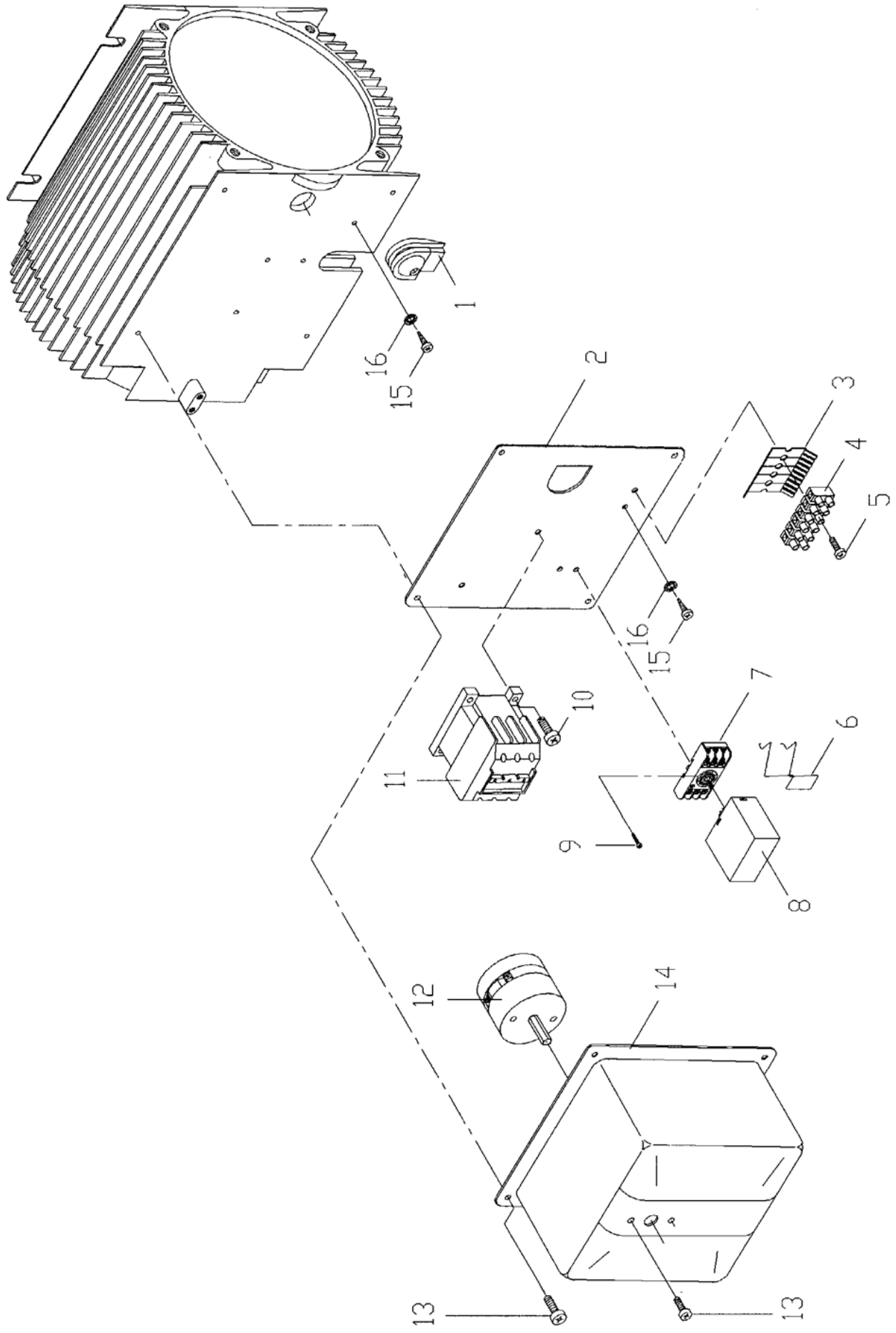
Pos.	Ref. no.	Bezeichnung Description	640 A	660 A	690 A
01	06180757	STEMPELSTYR, 600 PISTON GUIDE, 600	1	1	1
02	06260959	OLIEAFTAPNINGSPROP KPL., G100/G2000 DRAIN PLUG CPL., G100/G2000	1	1	1
03	06070455	IMBRACO SKRUE, M8X25 ALLEN SCREW, M8X25	2	2	2
04	06261037	FJEDERKIT SPRING KIT	1	1	1
05	06260896	STEMPELKIT, STÅL 1 STK. PISTON KIT, STEEL 1 PCS.	1		
05	06261430	STEMPELKIT, KERAMIK 1 STK. PISTON KIT, CERAMIC 1 PCS.		1	1
06	06260897	TRYKLEJEKIT PRESSURE BEARING KIT, G600	1	1	1
07	06180743	SKRÅSKIVE, 7,11 CAM DISC, 7,11		1	1
07	06180744	SKRÅSKIVE, 6,00 CAM DISC, 6,00			1
07	06180745	SKRÅSKIVE, 8,24 CAM DISC, 8,24	1		
07	06180746	SKRÅSKIVE, 8,24 CAM DISC, 8,24		1	
07	06180747	SKRÅSKIVE, 9,35 CAM DISC, 9,35	1		
08	06260898	SKRÅKIVELEJEKIT CAM DISC BEARING KIT	1	1	1
09	06270267	SERVICE KIT ROTOR	1	1	1
09A	06120310	O-RING, 117X3 O-RING, 117X3	1	1	1
09B	06181069	LEJEFLANGE BEARING FLANGE	1	1	1
09C	06070455	IMBRACO SKRUE, M8X25 ALLEN SCREW, M8X25	1	1	1
09D	06120307	SIMMERRING, 30X47X7 SEALING RING, 30X47X7	1	1	1
09E	06140040	KUGELEJE, 8X7X35 BALL BEARING, 8X7X35	1	1	1
09F	06280100	FEDER, 8X7X35 KEY, 8X7X35	1	1	1
09G	06270156	ROTOR M/AKSEL, SE 270205 ROTOR WITH AXLE, SE 270205	1	1	1
09H	06140039	KUGELEJE BALL BEARING	1	1	1

**Motor 640/660/690 / Motor 640/660/690 / Moteur 640/660/690**

Pos.	Ref. no.	Betegnelse Description	Bezeichnung Description	640 A	660 A	690 A
1-5	06262262	STEMPELSTYR, KPL., 640 PISTON GUIDE, CPL., 640	GUIDE PISTON, CPL., 640	1		
1-5	06262263	STEMPELSTYR, KPL., 660/690 PISTON GUIDE, CPL., 660/690	GUIDE PISTON, CPL., 660/690		1	1
10	06280103	TALLERKENFJEDER , 51,5X35, SPRING , 51,5X35,	TELLERFEDER 51,5X35X50,6X1,5 RESSORT G-600	2	2	2
11	06270161	STATORHUS M. STATOR , 3X230/400V 50 HZ STATOR HOUSING W. STATOR, 3X230/400V 50 HZ	STATORGEHAEUSE M. STATOR G600/POWER ENVELOPPE STATOR G 600OR OR G600/POWER	1	1	1
11	06270203	STATORHUS M. STATOR , 3X415V STATOR HOUSING W. STATOR, 3X415V	STATORGEHAEUSE M. STATOR CORPS DE STATOR AVEC STATOR	1	1	1
11	06270266	STATORHUS M/STATOR	STATORGEHAEUSE M/STATOR CORPS DE STATOR AVEC STATOR G-660	1	1	1
12	06270141	VENTILATOR FAN	VENTILATOR F. G-600 VENTILATEUR G 600	1	1	1
13	06270240	VENTILATORSKÆRM FAN COVER	VENTILATORDECKEL CARTER HELICE MOTEUR A. A. ARRET	1	1	1
14	06080088	STJERNESKIVE, GALV., Ø5 TOOTH LOCK WASHER, GALV., Ø5	STERNESCHIBE, GALV. ROND A DENTS	3	3	3
15	06070525	TAP TITE P/H, Ø5X8 TAP TITE P/H, Ø5X8	TAP TITE P/K PH TAP TITE	3	3	3
16	06040181	SPÆNDEJERN FOR MOTOR, 30X8X210 TIGHTENING BAR FOR MOTOR, 30X8X210	SPANNEISEN F. MOTOR FER DE SERRAGE POUR MOTEUR	2	2	2
17	06061185	KONSOL FOR MOTOR, 243X270X2,0 MOTOR BRACKET, 243X270X2,0	MOTORWAND CONSOLE POUR MOTEUR G-660	1	1	1
18	06080018	STJERNESKIVE, M8 TOOTH LOCK WASHER, M8	FEDERTELLERSCHIBE, GALV. RONDELLE D'ETOILE	4	4	4
19	06080004	SPÆNDESKIVE, 8,4X17X1,6 TENSION DISC, 8,4X17X1,6	FEDERSCHIBE, GALV. RONDELLE	4	4	4
20	06070452	UNBRACO SKRUE, M8X20 ALLEN SCREW, M8X20	IMBUSSBOLZEN, GALV. INTRAVIS 8X20 GALV. GALV.	4	4	4
21	06261718	OLIEGLASKIT OIL GLASS KIT	ÖLGLAS KIT VERRE HUILE	1	1	1
21A	06120282	O-RING, 14X1,78 O-RING, 14X1,78	O-RING JOINT TORIQUE 14 X 1,78	1	1	1
21A	06200426	PROP FOR OLIEGLAS PLUG FOR OIL GLASS	PROPFFEN F. ÖLGLAS CAPUCHON P. VERRE D'HUI.	1	1	
21B	06120466	O-RING, 18,72X2,62 O-RING, 18,72X2,62	O-RING JOINT TORIQUE	1	1	1
21C	06120466	O-RING, 18,72X2,62 O-RING, 18,72X2,62	O-RING JOINT TORIQUE	1		
22	06181247	FORSKRUNING FOR OLIEGLAS, NV27X49 SCREW CONNECTION FOR FUEL GLAS, NV27X49	VERSKRUBUNG FÜR ÖLGLAS RACCORD	1	1	1
23	06120466	O-RING, 18,72X2,62 O-RING, 18,72X2,62	O-RING JOINT TORIQUE	1	1	1

**Motor 640/660/690 / Motor 640/660/690 / Moteur 640/660/690**

Pos.	Ref. no.	Betegnelse Description	Bezeichnung Description	640 A	660 A	690 A
24	06181143	BL/ENDPROP, Ø24X17 HOLE PLUG, Ø24X17	BLENDPFROPFEN CAPUCHON DE COUVERTURE	1	1	1
8 - 12	06270263	EL-MOTOR, 230/400V 50 HZ ELECTRIC MOTOR, 230/400V 50 HZ	ELEKTROMOTOR G-660 MOTEUR ELECTRIQUE G-660	1	1	1
8 - 12	06270264	EL-MOTOR, 230/400V 60 HZ ELECTRIC MOTOR, 230/400V 60 HZ	ELEKTROMOTOR G-660 MOTEUR ELECTRIQUE G-660	1	1	1
8 - 12	06270265	EL-MOTOR, 3X415V 50 HZ ELECTRIC MOTOR, 3X415V 50 HZ	ELEKTROMOTOR MOTEUR ELECTRIQUE G-660	1	1	1



# El-komponenter 640/660/690 / Electric components 640/660/690 / Elektrische komponente 640/660/690 / Composantes électrique 640/660/690

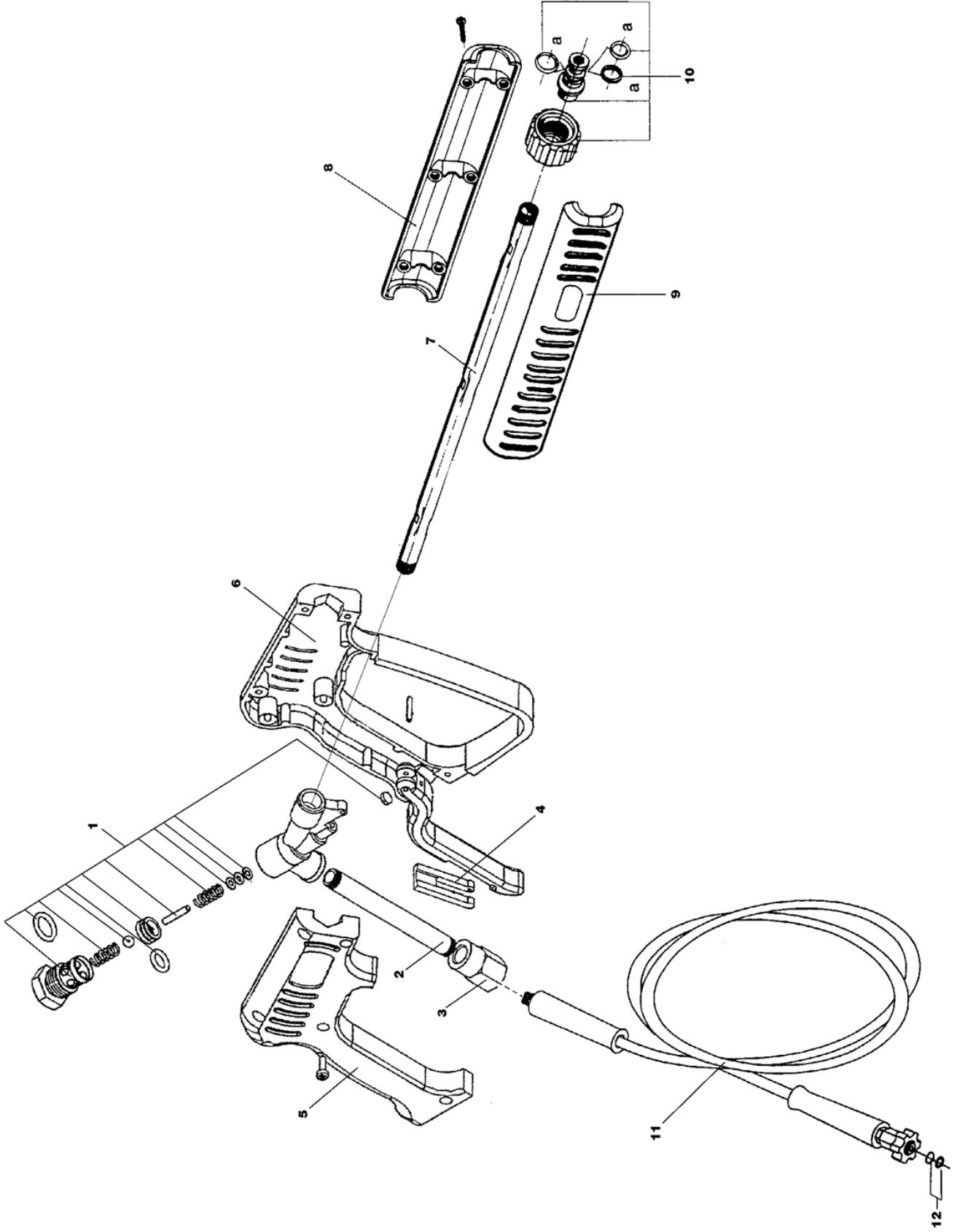
Pos.	Ref. no.	Betegnelse Description	Bezeichnung Description	640 A	660 A	690 A
0	06160883	OMSKIFTER, 220V/380V SWITCH, 220V/380V	UMSCHALTER SALZER INVERSEUR SALZER	1	1	1
0	06160884	TRANSFORMER, 220/380V - 24V TRANSFORMER, 220/380V - 24V	TRANSFORMATOR TRANSFORMATEUR	1	1	1
0	06300510	ADVARSELSSKILT *SF WARNING PLATE *SF	WARNSCHILD FINNLAND PLAQUE D'AVERTISSEMENT FINLANDE	1	1	1
01	06160713	KABELGENNEMFØRING, 50X32X21,5 CABLE GROMMET, 50X32X21,5	KABELDURCHFUEHRUNG TRAVERSE DE CABLE G500/G600	1	1	1
02	06160714	GUMMIPAKNING RUBBER GASKET	GUMMIDICHTUNG F/ELEKTRO-KASTEN JOINT EN 'CAOUTCHOUC P. BOX'ELEC.	1	1	1
03	06160764	UNDERLAGSPLADE WASHER	UNTERLAGSSCHEIBE PLAQUE DE SUPPORT	1	1	1
04	06160755	KRONEMUFFE, Ø4,2X12 CROWN SOCKET, Ø4,2X12	KRONENMUFFE MANCHON A CRENEAUX	1	1	1
05	06070512	SKRUE, 3X16 SCREW, 3X16	TAP TITE, P/K TAP TITE	2	2	2
06	06040182	HOLDERØJLE HOLDER	HALTUNGSBUEGEL F. STROEMUNGSMODUL CROCHET DE FIXATIONDULE DDULE DE FLOW	1	1	1
07	06160691	SOKKEL, 11 P BASE, 11 P	SOKKEL F/RADIOEMPFANGENER SOCLE POUR RECEPTEUR	1	1	1
08	06170183	ELSTYRING AUT/TVANG G660 ELECTRIC CONTROL AUT + FORCED, 3X380V 50HZ G660	ELEKTROSTYRING AUT+ZWANG CONTR.ELEC.380V G660 (R.1)	1	1	1
08	06170187	ELSTYRING AUT+TVANG, 3X220V 50HZ G660 ELECTRIC CONTROL AUT + FORCED, 3X220V 50HZ G660	ELEKTROSTYRING AUT+ZWANG CONTROL.ELECT.220V G-640E G-660	1	1	1
08	06170188	ELSTYRING AUT+TVANG, 3X415V 50HZ G660 ELECTRIC CONTROL AUT + FORCED, 3X415V 50HZ G660	ELEKTROSTYRING G-660 CONTROL.ELECTRIQUEE G-66E G-660	1	1	1
08	06170189	ELSTYRING AUT+TVANG, 3X220V 60HZ G660 ELECTRIC CONTROL AUT, + FORCED, 3X220V 60HZ	ELEKTROKONTROLLE AUT+GEZWUNGEN GUIDE ELECTRIQUE AUT+FORCE G-660	1	1	1
08	06170190	ELSTYRING AUT+TVANG, 3X220/380 G660 ELECTRIC CONTROL AUT + FORCED, 3X220/380 G660	ELEKTROSTYRING AUT+ZWANG GUIDE ELECTRIQUE AUT.+FORCE G-660	1	1	1
08	06170194	ELSTYRING AUT+TVANG, 200V 50HZ G660 ELECTRIC CONTROL AUT + FORCED, 200V 50HZ G660	ELEKTROKONTROLLE AUTOMATIK+GEZWUNGEN GUIDE ELEC. AUT+FORCE	1	1	1
08	06170195	ELSTYRING AUT+TVANG, 200V 60HZ G660 ELECTRIC CONTROL AUT + FORCED, 200V 60HZ G660	ELEKTROKONTROLLE AUT. + GEZWUNGEN GUIDE ELECTRIQUE AUT-FORCE G-660	1	1	1
08	06170196	EL-STYRING, 3X400/415V TÜV ELECTRIC CONTROL, 3X400/415V TÜV	ELEKTROKONTROLLE GUIDE ELEC. AUT./FORCE	1	1	1
09	06070768	SKRUE, M3X25 SCREW, M3X25	SCHRAUBE 3X25 VIS GALVANISE	2	2	2
10	06070512	SKRUE, 3X16 SCREW, 3X16	TAP TITE, P/K TAP TITE	4	4	4
11	06160265	KONTAKTOR, 3X200-230V 50 HZ CONTACTOR, 3X200-230V 50 HZ	SCHUETZ DANFOSS CONTACTEUR DANFOSS	1	1	1
11	06160463	KONTAKTOR, 25A 24V/50-60HZ CONTACTOR, 25A 24V/50-60HZ	SCHUETZ C125 24 V 50/60 HZ CONTACTEUR C125 24V 50HZ	1	1	1



# El-komponenter 640/660/690 / Electric components 640/660/690 / Elektrische komponente 640/660/690 / Composantes électrique 640/660/690

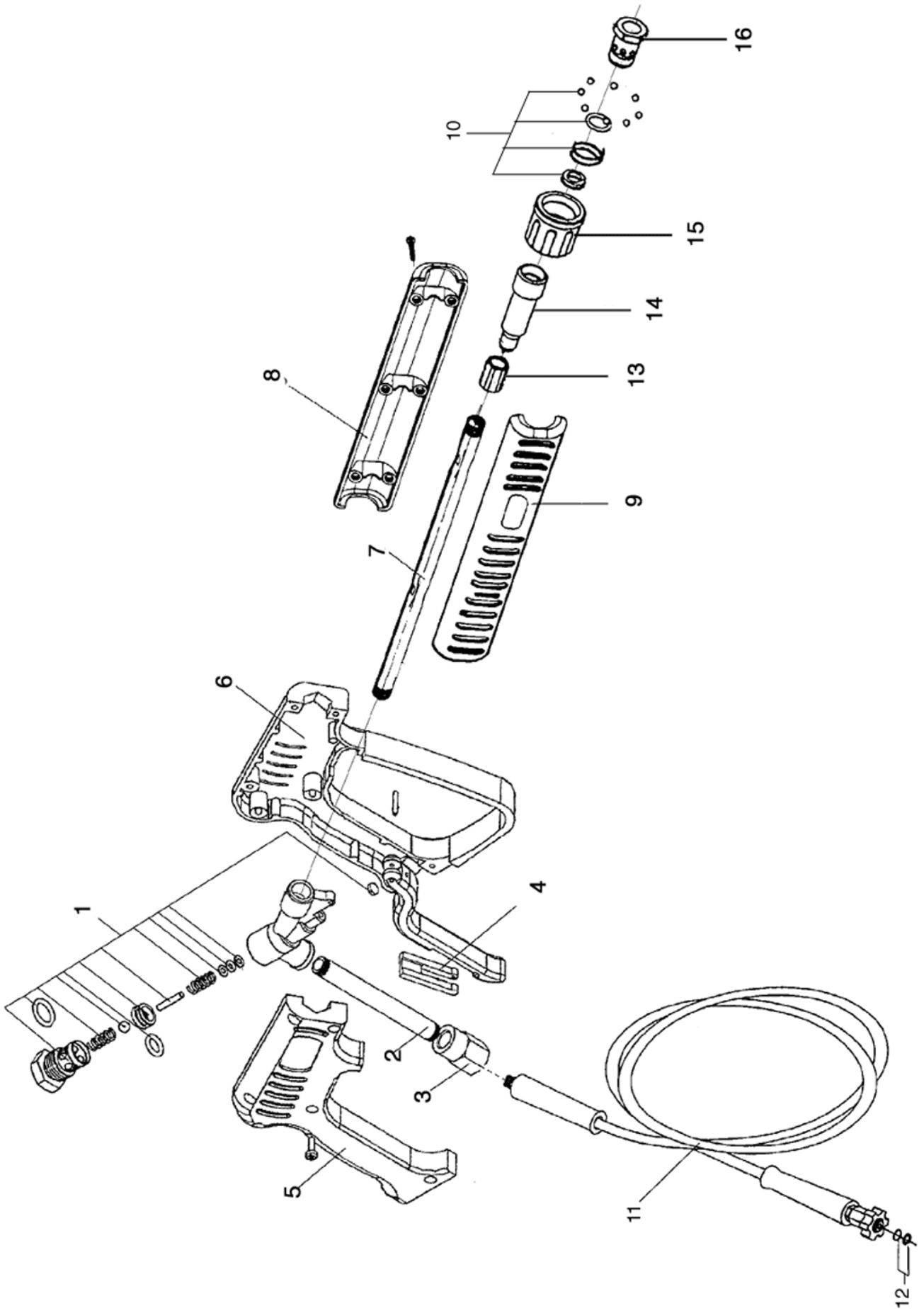
640 A      660 A      690 A

Pos.	Ref. no.	Betegnelse Description	Bezeichnung Description
11	06160710	KONTAKTOR, 4-P CONTACTOR, 4-P	SCHUETZ 4-POLIG AEG 380V CONTACTEUR 4 POLES 380 V3380V
11	06160823	KONTAKTOR, 25A 3X200-230V 60HZ CONTACTOR , 25A 3X200-230V 60HZ	SCHUETZ CONTACTEUR C125 37H0051-29 60 HZ
12	06160675	OMSKIFTER KOMPLET SWITCH CPL.	UMSCHALTER KPL. INTERRUPTEUR 1 ETAGE
12	06261437	OMSKIFTER KOMPLET SWITCH CPL.	UMSCHALTER INTERRUPTEUR CPL.
13	06070515	SKRUE, 4X12 SCREW, 4X12	SCHRAUBE, VERSENKT VIS 4X12 HFC 9040
14	06061207	EL-BOX, 185X185X1,0 ELECTRIC BOX, 185X185X1,0	ELEKTROSCHALTKASTEN BOITE ELECTRIQUE N/G 660
15	06070511	TAP TITE P/H, M4X8 TAP TITE P/H, M4X8	SCHRAUBE VIS 4X8 HFC 266
16	06080046	STJERNESKIVE, M4 TOOTH LOCK WASHER, M4	STERNSCHEIBE, GALV. RONDELLE



## Pistol 98 / Pistol 98 / Pistole 98 / Pistolet 98

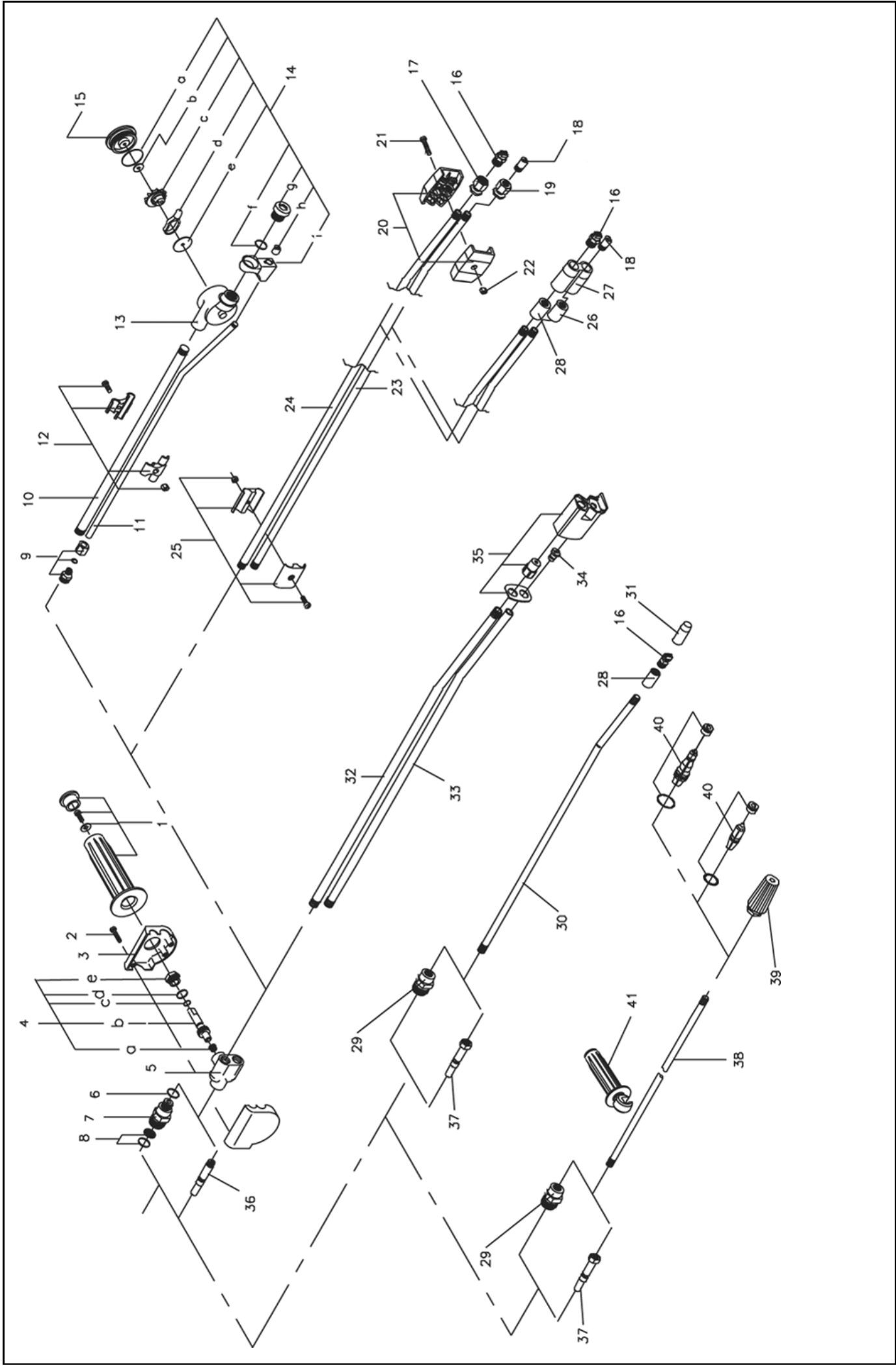
Pos.	Ref. no.	Betegnelse Description	Bezeichnung Description	640 A	660 A	690 A
0	06290028	PISTOL ASTRA 320 3/8 PISTOL, 98	PISTOLE ASTRA 320 PISTOLET MRM320=290113	1	1	1
01	06261543	SERVICEKIT F. PISTOL MTM SERVICE KIT FOR PISTOL , MTM	KIT F. PISTOLE MTM KIT DE SERVICE P.PISTOLET	1	1	1
02	06050981	TILGANGSRØR INLET PIPE	EINLASSROHR F. PISTOL TUBE D'ENTREE PISTOLET	1	1	1
03	06261950	DREJELED, KPL. SWIVEL, CPL.	DREHGELENK JOINT TOURNANT, CPL.	1	1	1
04	06200384	SIKKERHEDSPAL SAFETY LOCK	SPERRVORRICHTUNG ARRÊT DE SURETE MTM	1	1	1
05	06200420	PISTOLKROP PISTOL HOUSING	PISTOLKÖRPER RECHTS CORPS DE PISTOLET	1	1	1
06	06200421	PISTOLKROP PISTOL HOUSING	PISTOLKÖRPER LINKS CORPS DE PISTOLET	1	1	1
07	06050980	FORRØR FOR PISTOL FRONT PIPE FOR PISTOL	VORDERROHR F. PISTOLE TUBE	1	1	1
08	06200423	KAPPE VENSTRE CAP LEFT	KAPPE FÜR FOHRROHR LINKS CARTER DE PISTOLETUCHE UCHE	1	1	1
09	06200422	KAPPE, HØJRE CAP, RIGHT	KAPPE FÜR VORROHR RECHTS CARTER DE PISTOLETOITE OITE	1	1	1
10	06261568	SKRUEKOBLING FOR PISTOL SCREW COUPLING FOR PISTOL	SCHRAUBENKUPPLUNG F. PISTOLE RACCORD D'ACCROUPEMENT P.OLETS	1	1	1
10A	06261547	PAKNINGSSKIT F. SKRUEKOBL. GASKET KIT FOR SCREW COUPLING	SCHRAUBKUPPLUNG KIT P. JOINTS TORIQUES RACC.A.VIS	1	1	1
11	06110476	HØJTRYKSSLANGE, DN8X8M HIGH PRESSURE HOSE, DN8X8M	HOCHDRUCKSCHLAUCH M. SCHRAUBENKUPPLUNGEN TUYAU H.P. A/RAC.A VIS(R.ER A/RAC. A VIS	1	1	1
12	06260936	PAKNINGSSKIT F. SKRUEKOB. GASKET KIT FOR SCREW COUPLING	DICHTUNGSSKIT F. SCHRAUBENKUPPLUNG KIT JOINT RACCORD VIS VIS	1	1	1



## Pistol / Pistole / Pistole / Pistolet

Pos.	Ref. no.	Betegnelse Description	Bezeichnung Description	640 A	660 A	690 A
0	06290080	PISTOL LANG M. QUICK PISTOL WITH QUICK COUPLING	PISTOLET 3/8 EME	1	1	1
01	06261543	SERVICEKIT F. PISTOL MTM SERVICE KIT FOR PISTOL , MTM	KIT F. PISTOLE MTM KIT DE SERVICE P.PISTOLET	1	1	1
02	06050981	TILGANGSRØR INLET PIPE	EINLASSROHR F. PISTOL TUBE D'ENTREE PISTOLET	1	1	1
03	06261950	DREJELED, KPL. SWIVEL, CPL.	DREHGELENK JOINT TOURNANT, CPL.	1	1	1
04	06200384	SIKKERHEDSPAL SAFETY LOCK	SPERRVORRICHTUNG ARRÊT DE SURETE MTM	1	1	1
05	06200420	PISTOLKROP PISTOL HOUSING	PISTOLKÖRPER RECHTS CORPS DE PISTOLET	1	1	1
06	06200421	PISTOLKROP PISTOL HOUSING	PISTOLKÖRPER LINKS CORPS DE PISTOLET	1	1	1
07	06051045	FØRRØR FOR PISTOL FRONT PIPE FOR PISTOL	TUBE AVANT PISTOLET290080	1	1	1
08	06200525	KAPPE CAP	CACHE TUBE PISTOLET290080	1	1	1
09	06200524	KAPPE CAP	CACHE TUBE PISTOLET290080	1	1	1
10	06262246	KIT FOR LYNKOBLING KIT FOR QUICK COUPLING	KIT JOINTS RACCORD RAPIDE	1	1	1
11	06110200	HØJTRYKSSLANGE DN10X10M HIGH PRESSURE HOSE, 3/8"X3/8" NIPPLE, Ø10 MM 10 M	HOCHDRUCKSCHLAUCH FLEXIB.HP 10M-DIAMETRE 10	1		
11	06110475	HØJTRYKSSLANGE DN8X10M HIGH PRESSURE HOSE, 3/8"X3/8" NIPPLE, Ø8 MM 10 M	HOCHDRUCKSCHLAUCH M. SCHRAUBENKUPPLUNGEN TUYAU H.P.SCHIF.AV.RAC.AEER A/RAC. A VIS		1	1
12	06260936	PAKNINGSKIT F. SKRUEKOB. GASKET KIT FOR SCREW COUPLING	DICHTUNGSKIT F. SCHRAUBENKUPPLUNG KIT JOINT RACCORD VIS VIS	1	1	1
13	06262287	MUFFE, 1/4"-1/4" SOCKET, 1/4"-1/4"	MANCHON P/PISTOLET 290080	1	1	1
14	06262286	KOBLING COUPLING	RACCORD VIS P/PISTOLET	1	1	1
15	06262284	OMLØBER COUPLING NUT	ECROU D/RACCORD P/PISTOLE	1	1	1
16	06262285	KOBLING COUPLING	RACCORD P/PISTOLET 290080	1	1	1

Spulerør / Lances / Lanzen / Lance



## Spulerør / Lances / Lanzen / Lance

Pos.	Ref. no.	Betegnelse Description	Bezeichnung Description	640 A	660 A	690 A
01	06260232	HANDTAGSKIT F. SPULERØR HANDLE KIT	HANDGRIFFKIT F. DOPPELLANZE KIT SERVICE AVEC POIGNEENNE DOUBLE	1	1	1
02	06070479	SKRUE, 4X20 SCREW, 4X20	SCHNEIDSCHRAUBE, SCHWARZZINK VIS	3	3	3
03	06200097	PYNTEDÆKSEL F. VENTILHUS COVER F. VALVE HOUSING	STAUWKAPPE F. VENTILGEHAE COUVERCLEOR. D. VAN OR. D. VAN	1	1	1
04	06260860	VENTILSPINDEL KIT VALVE SPINDLE KIT	VENTILSPINDELKIT F. DRUCKREGELUNG KIT REGLAGE PRESSION DOUBLE. PRES.	1	1	1
04C	06120006	O-RING, 6.75X1.78 O-RING, 6.75X1.78	O-RING JOINT TORIQUE MAT 4470	1	1	1
04D	06120010	O-RING, 13.1X1.6 O-RING, 13.1X1.6	O-RING JOINT TORIQUE MAT 4470	1	1	1
04E	06190245	MØTRIK NUT	MUTTER F. VENTIL ECROU POUR VANNE DOUB.LAN	1	1	1
05	06211078	VENTILHUS VALVE HOUSING	VENTILGEHAEUSE, KPL. CULASSE LANCE DOUBLE ET	1	1	1
06	06120188	O-RING, 10X2 O-RING, 10X2	O-RING JOINT TORIQUE	1	1	1
07	06030484	SKRUEKOBLING 1/4 UD.V. SCREW COUPLING ROTATABLE, 1/4"	SCHR.KUPPLUNG DREHBAR F.DOPPELLANZE ACCOUPL. VIS TOURNANT DBL LANCE DOUBLE	1	1	1
08	06100332	FILTER FOR TURBO LASER FILTER FOR TURBO LASER	FILTER F. TURBO LASER M. O-RING FILTRE TURBO LASER	1	1	1
08A	06120139	O-RING, 10X1 O-RING, 10X1	O-RING JOINT SPY JET	1	1	1
09	06030527	BRYSTNIPPEL, 8X1/4" BREAST NIPPLE, 8X1/4"	GEWINDESTUECK RACCORD	1	1	1
0A	06261108	TURBO-LASER 600 MM TURBO LASER W. PRES. REG. - SCREW - 600 MM, 6.5	TURBO LASER TURBO-LASER 600MM 600S/21	1		
0A	06261110	TURBO-LASER 600 MM TURBO LASER W. PRES. REG. - SCREW - 600 MM, 9.0	TURBO LASER TURBO LASER 600MM G-617 2	1		
0A	06261880	TURBO LASER M/ TRYKREG. - SKRUE - 600 MM, 5.0 TURBO LASER W. PRES. REG. - SCREW - 600 MM, 5.0	TURBO LASER TURBO LASER G-690			1
0A	06262060	ENK.SPULERØR 1100MM QUICK SINGLE LANCE - QUICK - 1100 MM, EXCL.NOZ	LANCE SIMPLE RAPIDE 1.10M	1		
0A	06262068	TURBO-LASER 600MM QUICK TURBO LASER W. PRES. REG. - QUICK - 600 MM, 9.0	TURBO-LASER 600MM RAPIDE	1		
0A	06262080	TURBO LASER M/ TRYKREG. - LYN - 600 MM, 5.0 TURBO LASER W. PRES. REG. - QUICK - 600 MM, 5.0	TURBO-LASER 600MM RAPIDE			1
0B	06260758	DOBBLT SPULERØR 600MM EXCL.TRYKDYSE DOUBLE LANCE - PRES. REG.- SCREW -600 MM,	DOPPELLANZE DOUBLE LANCE 600MM	1	1	1
0B	06262063	DOBBL.SPULERØR 600MM QUICK DOUBLE LANCE - PRES. REG.- QUICK -600 MM,	LANCE DOUBLE RAPIDE, 600M	1	1	1
0C	06260382	ENKELT SPULERØR 600 MM SINGLE LANCE - SCREW - 600 MM, EXCL.NOZ	EINZELLANZE LANCE SIMPLE 600 MM	1	1	1

## Spulerør / Lances / Lanzen / Lance

Pos.	Ref. no.	Betegnelse Description	Bezeichnung Description	640 A	660 A	690 A
0C	06262059	ENK.SPULERØR 600MM QUICK SINGLE LANCE - QUICK - 600 MM, EXCL.NOZ	LANCE SIMPLE RAPIDE, 600M	1	1	1
0D	06261957	SPECTRUM 600MM U/TRYKDYSE SPECTRUM W. PRES. REG. - SCREW - 600 MM,	SPECTRUM OHNE DÜSE - 600 MM SPECTRUM SANS GICLÉUR - 600 MM	1	1	1
0D	06261990	SPECTRUM M/ TRYKREG. - SKRUE - 600 MM, 150 SPECTRUM W. PRES. REG. - SCREW - 650 MM, 150	SPECTRUM DÜSE LANCE SPECTRUM			1
0D	06261991	SPECTRUM M/ TRYKREG. - SKRUE - 600 MM, 165 SPECTRUM W. PRES. REG. - SCREW - 650 MM, 165	SPECTRUM DÜSE LANCE SPECTRUM 660-600P		1	
0D	06261993	SPECTRUM M/ TRYKREG. - SKRUE - 600 MM, 190 SPECTRUM W. PRES. REG. - SCREW - 650 MM, 190	SPECTRUM DÜSE LANCE SPECTRUM	1		
0D	06262093	SPECTRUM M/ TRYKREG. - LYN - 600 MM, 150 SPECTRUM W. PRES. REG. - QUICK - 600 MM, 150	LANCE SPECTRUM 600/45.0MM			1
0D	06262094	SPECTRUM M/ TRYKREG. - LYN - 600 MM, 165 SPECTRUM W. PRES. REG. - QUICK - 600 MM, 165	LANCE SPECTRUM 600/46.5 R		1	
0D	06262096	SPECTRUM M/ TRYKREG. - LYN - 600 MM, 190 SPECTRUM W. PRES. REG. - QUICK - 600 MM, 190	LANCE SPECTRUM 600/49.0MM	1		
0D	06262253	SPECTRUM 600 U.DYSE QUICK SPECTRUM W. PRES. REG. - QUICK - 600 MM,	LANCE SPECTRUM R. R-S/GICL	1	1	1
0E	06262113	ROTO JET M/ SKRUE - 600 MM, 5.0 ROTO JET - SCREW - 600 MM, 5.0	LANCE ROTO JET 050			1
0E	06262117	ROTO JET LANCE 070 ROTO JET - SCREW - 600 MM, 7.0	LANCE ROTO JET 070			1
0E	06262118	ROTO JET LANCE 090 ROTO JET - SCREW - 600 MM, 9.0	LANCE ROTO JET 090	1		
0E	06262124	ROTO JET M/ LYN - 600 MM, 5.0 ROTO JET - QUICK - 600 MM, 5.0	LANCE ROTO JET RAPIDE 050			1
0E	06262128	ROTO JET M/ LYN - 600 MM, 7.0 ROTO JET - QUICK - 600 MM, 7.0	LANCE ROTO JET RAPIDE 070		1	
0E	06262129	ROTO JET M/ LYN - 600 MM, 9.0 ROTO JET - QUICK - 600 MM, 9.0	LANCE ROTO JET RAPIDE 090	1		
10	06050841	SPULERØR LIGE, Ø13X1,5X586 LANCE STRAIGHT, Ø13X1,5X586	LANCE GERADE TURBO LASER LANCE DROITE TURBO LASER	1	1	1
11	06050842	KEMIRØR 15 GR. BUK , Ø8X1X622 DETERGENT PIPE 15 DEG., Ø8X1X622	REI.MITTLERØHR 15 GR. VERB. F. T. L. TUYAU POUR LANCEUR, 15 DSER, 15 DEGRES	1	1	1
12	06261130	BESLAG FOR TURBO LASER FITTINGS FOR TURBO LASER	BESCHLAG F. TURBO LASER ROHR ARMATURE POUR TURBO LASER TUYAU	1	1	1
13	06261288	TURBO LASER HUS , Ø3,6 MIN 720 L TURBO LASER HOUSING, Ø3,6 MIN 720 L	GEHÄUSE F. TURBO LASER CORPS P.TURBO LASER 3E GE COMPLET	1	1	
14	06261111	TURBO LASER KIT, 5.0 TURBO LASER KIT, 5.0	SERVICEKIT F. TURBO LASER KIT REP. TURBO LASER G 11 LASER			1
14	06261151	TURBO LASER KIT, 6.5 TURBO LASER KIT, 6.5	SERVICEKIT F. TURBO LASER KIT REPARATION TURBO LASEASER		1	
14	06261153	TURBO LASER KIT, 9.0 TURBO LASER KIT, 9.0	SERVICEKIT F. TURBO LASER KIT REP. TURBO LASER G 6ZASER			1



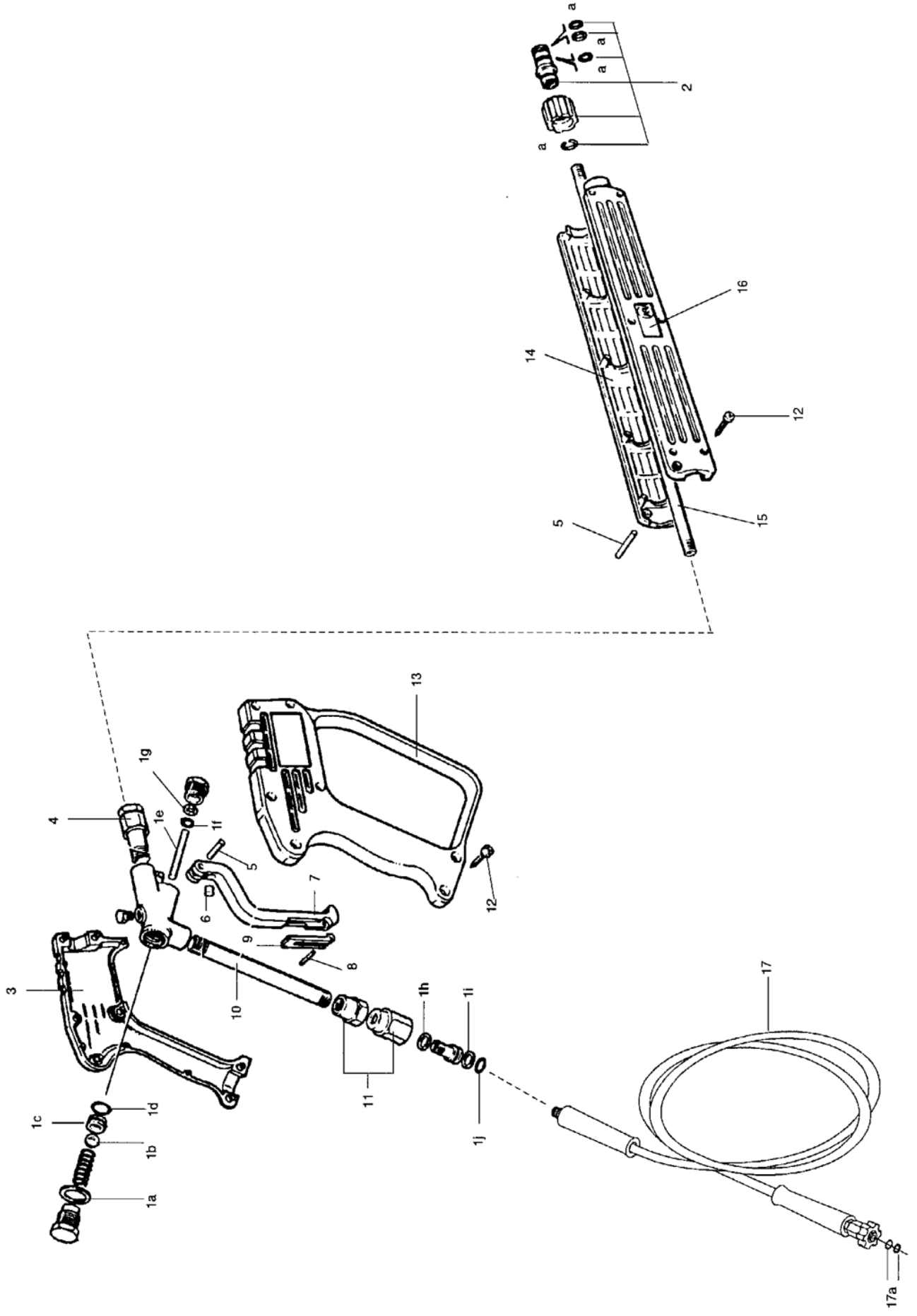
## Spulerør / Lances / Lanzen / Lance

Pos.	Ref. no.	Betegnelse Description	Bezeichnung Description	640 A	660 A	690 A
14A	06120544	O-RING, 36.0X1,78 O-RING, 36.0X1,78	JOINT TORIQUE	1	1	1
14F	06120282	O-RING, 14X1,78 O-RING, 14X1,78	JOINT TORIQUE 14 X 1,78	1	1	1
14H	06180533	DYSE, Ø10X12 NOZZLE, Ø10X12	DUESE GICLEUR DIA. 10X12	1	1	1
15	06180936	LAG FOR TURBO LASER COVER FOR TURBO LASER	DECKEL F. TURBO LASER, BEARBEITET COUVER.P.TURBO LASER FACOR, FACONNE	1	1	1
16	06090140	DYSE HÆRDET 1/4-1505 FLAT JET NOZZLE 15°, 5	FLACHSTRAHLDUESE 15° GICLEUR DURCI 1/4MEG 1505			1
16	06090208	DYSE HÆRDET 1/4-1509 FLAT JET NOZZLE 15°, 9	DUESE, GEHAERTET, ROSTFREI GICLEUR DURCI 1/4MEG 1509	1		
16	06090211	DYSE HÆRDET 1/4-1506,5 FLAT JET NOZZLE 15°, 6,5	FLACHSTRAHLDUESE 15° GICLEUR DURCI 1/4MEG15065		1	
17	06180780	DYSEHOLDER, 17X20 NOZZLE HOLDER, 17X20	DUESENHALTER F/HOCHDRUCKDUESE SUPPORT DE GICLEUR H.P.EUEUR H.P.	1	1	1
18	06180779	KEMIDYSE, Ø10X22 DETERGENT NOZZLE, Ø10X22	REINIGUNGSMITTELDUESE GICLEUR DETERGENT	1	1	1
19	06180781	DYSEHOLDER FOR KEMI, 17X20 NOZZLE HOLDER FOR DETERGENTS, 17X20	DUESENHALTER F/REINIGUNGSMITTEL SUPPORT DE GICLEUR DETERGRGENT	1	1	1
20	06200226	DYSEBSKYTTER NOZZLE PROTECTION, PLASTIC	DUESENSCHUTZ KUNSTSTOFF PROTECTION GICLEUR PLASTI PLASTIQUE	2	2	2
21	06070497	SKRUE, 5X22 SCREW, 5X22	SCHRAUBE, ROSTFREI, Z/K VIS C/H INOX	1	1	1
22	06080123	MØTRIK, M5 NUT, M5	MUTTER, ROSTFREI RONDELLE	1	1	1
23	06050941	KEMI-RØR, RUSTFRI, Ø13X1,5X591 DETERGENT PIPE, STAINLESS, Ø13X1,5X591	DOPPELLANZE TUBE DE LANCE BP	1	1	1
24	06050940	SPULERØR, RUSTFRI, Ø13X1,5X596 LANCE, STAINLESS, Ø13X1,5X596	DOPPELLANZE TUBE DE LANCE HP	1	1	1
25	06260537	BESLAG F. DOBB. SPULERØR FITTINGS FOR DOUBLE LANCE	BESCHLAG F/DOPPELLANZE TURBO ENTRETOISE LANCE TURBOE TE TURBO	1	1	1
26	06181232	DYSEHOLDER FOR KEMI, Ø18X26 NOZZLE HOLDER FOR DETERGENTS, Ø18X26	DUESENHALTER F. REINIGUNGSMITTELDUESE SUPPORT GICLEUR POUR DETER DE DETERGENT	1	1	1
27	06200374	DYSEBSKYTTER DOBBELT NOZZLE PROTECTION, PLASTIC, DOBBLE	DUESENSCHUTZ - DOBBELT PROTECT.PLAST.GICLEUR LAN	1	1	1
28	06030643	MUFFE FOR SPULERØR, Ø10 SOCKET FOR LANCE, Ø10	MUFFE F. LANZE MANCHON POUR LANCE INOX	1	1	1
28	06181233	DYSEHOLDER, Ø18X26 NOZZLE HOLDER, Ø18X26	DUESENHALTER F. HOCHDRUCKDUESE SUPPORT GICLEUR HAUTE PRR HAUTE PRESSION	1	1	1
29	06030485	SKRUEKOBLING, 1/4" INDV. SCREW COUPLING, 1/4"	SCHRAUBENKUPPLUNG, NICHT DREHBAR ACCOUPL. VIS 1/4 INT.NT NT	1	1	1
30	06050116	SPULERØR, RUSTFRI, Ø13X586 LANCE, STAINLESS, Ø13X586	LANZE, ROSTFREI LANCE INOX DIAM. 13X586	1	1	1

## Spulerør / Lances / Lanzen / Lance

Pos.	Ref. no.	Betegnelse Description	Bezeichnung Description	640 A	660 A	690 A
31	06200375	DYSESKYTTER ENKELT NOZZLE PROTECTION, PLASTIC, SINGLE	DUESESCHUTZ PROTECT.PLAST.GICLEUR LAN	1	1	1
35	06261968	SPECTRUM KIT, 150 SPECTRUM KIT, 150	SPECTRUM KIT KIT SPECTRUM 690/6900			1
35	06261969	SPECTRUM KIT, 165 SPECTRUM KIT, 165	SPECTRUM KIT KIT SPECTRUM 660/600P		1	
35	06261971	SPECTRUM KIT, 190 SPECTRUM KIT, 190	SPECTRUM KIT KIT SPECTRUM 640/6400	1		
36	06030649	LYNKOBLING 1/4 UDV. QUICK COUPLING, 1/4"	SCHNELLKUPPLUNG RACCORD RAPIDE	1	1	1
37	06030827	NIPPEL QUICK-1/4" INDV. NIPPLE, 1/4"	RACCORD RAPIDE 1/4" INTER	1	1	1
38	06050841	SPULERØR LIGE, Ø13X1,5X586 LANCE STRAIGHT, Ø13X1,5X586	LANZE GERADE TURBO LASER LANCE DROITE TURBO LASER	1	1	1
39	06262135	ROTO JET DYSE KPL., 5.0 ROTO JET NOZZLE CPL., 5.0	GICLEUR ROTO CPL. 5.0			1
39	06262139	ROTO JET DYSE KPL., 7.0 ROTO JET NOZZLE CPL., 7.0	GICLEUR ROTO CPL. 7.0		1	
39	06262140	ROTO JET DYSE KPL., 9.0 ROTO JET NOZZLE CPL., 9.0	GICLEUR ROTO CPL. 9.0	1		
40	06262224	ROTO DYSE KIT, 5.0 ROTO JET NOZZLE KIT, 5.0	KIT POUR GICLEUR ROTO 050			1
40	06262226	ROTO DYSE KIT 070 ROTO JET NOZZLE KIT, 7.0	KIT POUR GICLEUR ROTO 070		1	
40	06262227	ROTO DYSE KIT, 9.0 ROTO JET NOZZLE KIT, 9.0	KIT POUR GICLEUR ROTO 090	1		
41	06260365	HANDGREB TIL ROT. BØRSTER OG ENKELT LANSERØR, HANDLE FOR ROTATING BRUSHES AND SINGLE	HANDGRIFF POIGNEE DE MAINTIEN LANCE	1	1	1

Pistol RL30 / Pistole RL30 / Pistole RL30 / Pistolet RL30



**Pistol RL30 / Pistol RL30 / Pistole RL30 / Pistolet RL30**

Pos.	Ref. no.	Betegnelse Description	Bezeichnung Description	640 A	660 A	690 A
02	06261567	SKRUEKOBLING	SCHRAUBENKUPPLUNG RACCORD VIS G3000=261568 S	1		
02A	06261546	PAKNINGSKIT F. SKRUEKOBL. GASKET KIT FOR SCREW COUPLING	KIT F. O-RING SCHRAUBENKUPPLUNG KIT P. JOINTS TORIQUES RACC. A VIS	1		
03	06200424	PISTOLKROP PISTOL HOUSING	PISTOLKÖRPER KPL. CORPS DE PISTOL.	1		
04	06030773	AFGANGSNIPPEL OUTLET NIPPLE	AUSLASSNIPPEL RACCORD POUR PISTOLET	1		
05	06200416	LASEPAL LOCKING PAWL	VERSCHLUSS-SPERRKNEBEL CLIQUET D'ARRET	1		
06	06120514	TRYKBRIK PUSH BROACH	DRUCKUNTERSATZ RONDELLE DE PRESSION	1		
07	06200417	AFTRÆKKER PULLER	PISTOLSCHALTHEBEL GACHETTE DE PISTOLET	1		
08	06200419	LASEPAL LOCKING PAWL	SPERRKLINKE CLIQUET D'ARRET	1		
09	06200418	SIKKERHEDSLÅS SAFETY LOCK	SICHERHEITSSCHLOSS JOINT D'ARRET DE SURETE	1		
10	06050979	TILGANGSRØR INLET PIPE	EINLASSROHR TUYAU ENTREE PISTOLET 290	1		
11	06290038	DREJELED SWIVEL	KIT FÜR DREHGELENK RL30 RAC. TOURNANT PLUS FOURNI	1		
12	06070835	SKRUE, 3,5X18 SCREW, 3,5X18	SCREW 3,5X18 VIS	13		
14	06200415	KAPPE CAP	KAPPE FÜR FOHRROHR RECHTS MANTEAU P. TUYAU AVANT DROITE	1		
15	06050978	FORRØR FOR PISTOL FRONT PIPE FOR PISTOL	VORDERROHR F. PISTOLE TUBE POUR PISTOLET REF. 2	1		
16	06200414	KAPPE FOR FORRØR VENSTRE	KAPPE FÜR VORRÖHRE LINKS MANTEAU P. TUYAU AVANT GAUCHE	1		
17	06110475	HØJTRYKSSLANGE DN8X10M HIGH PRESSURE HOSE, 3/8"X3/8" NIPPLE, Ø8 MM 10 M	HOCHDRUCKSCHLAUCH M. SCHRAUBENKUPPLUNGEN TUYAU H.P. SCHIF. AV. RAC. AER. AVRAC. A VIS	1		
17A	06260936	PAKNINGSKIT F. SKRUEKOBL. GASKET KIT FOR SCREW COUPLING	DICHTUNGSKIT F. SCHRAUBENKUPPLUNG KIT JOINT RACCORD VIS VIS	1		
1A-I	06261549	SERVICEKIT F. PISTOL RL30 SERVICE KIT FOR PISTOL , RL30	KIT F. PISTOLE RL-30 KIT POUR PISTOLET RL-30	1		