

---

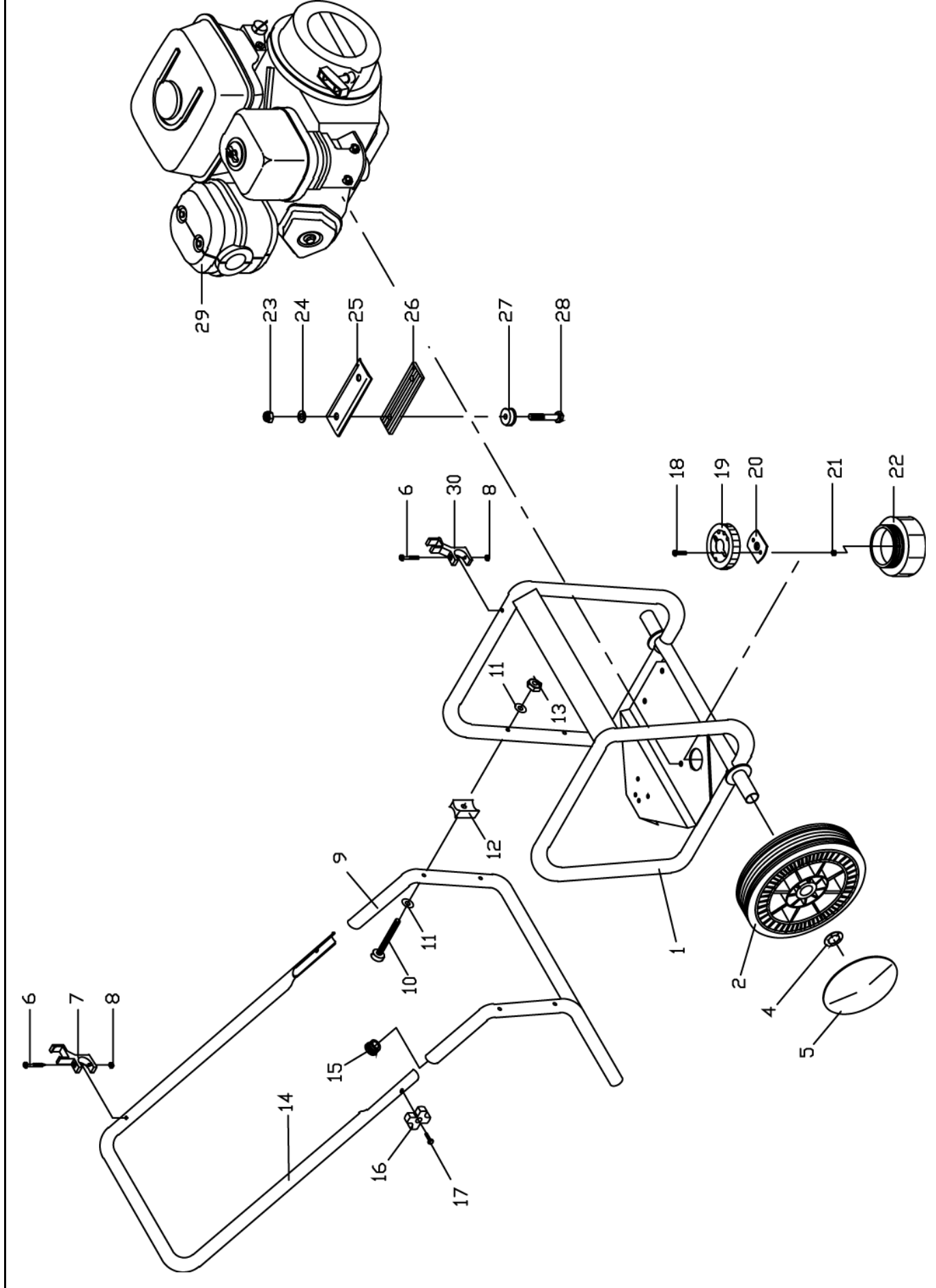
# N/G-118P

---

**Reservedelsliste**  
**Spare parts list**  
**Ersatzteilliste**  
**Liste de pièces détachées**

|   |    |
|---|----|
| Stel m. motor / Frame w. motor / Gestell m. motor / Chassis a. moteur . . . . . | 2  |
| Pumpe / Pump / Pumpe / Pomp . . . . .   | 5  |
| Pistol 98 / Pistol 98 / Pistole 98 / Pistolet 98 . . . . .                      | 10 |
| Pistol / Pistol / Pistole / Pistolet . . . . .                                  | 12 |
| Spulerør / Lances / Lanzen / Lance . . . . .                                    | 14 |

Stel m. motor / Frame w. motor / Gestell m. motor / Chassis a. moteur



# Stel m. motor / Frame w. motor / Gestell m. motor / Chassis a. moteur

118 P

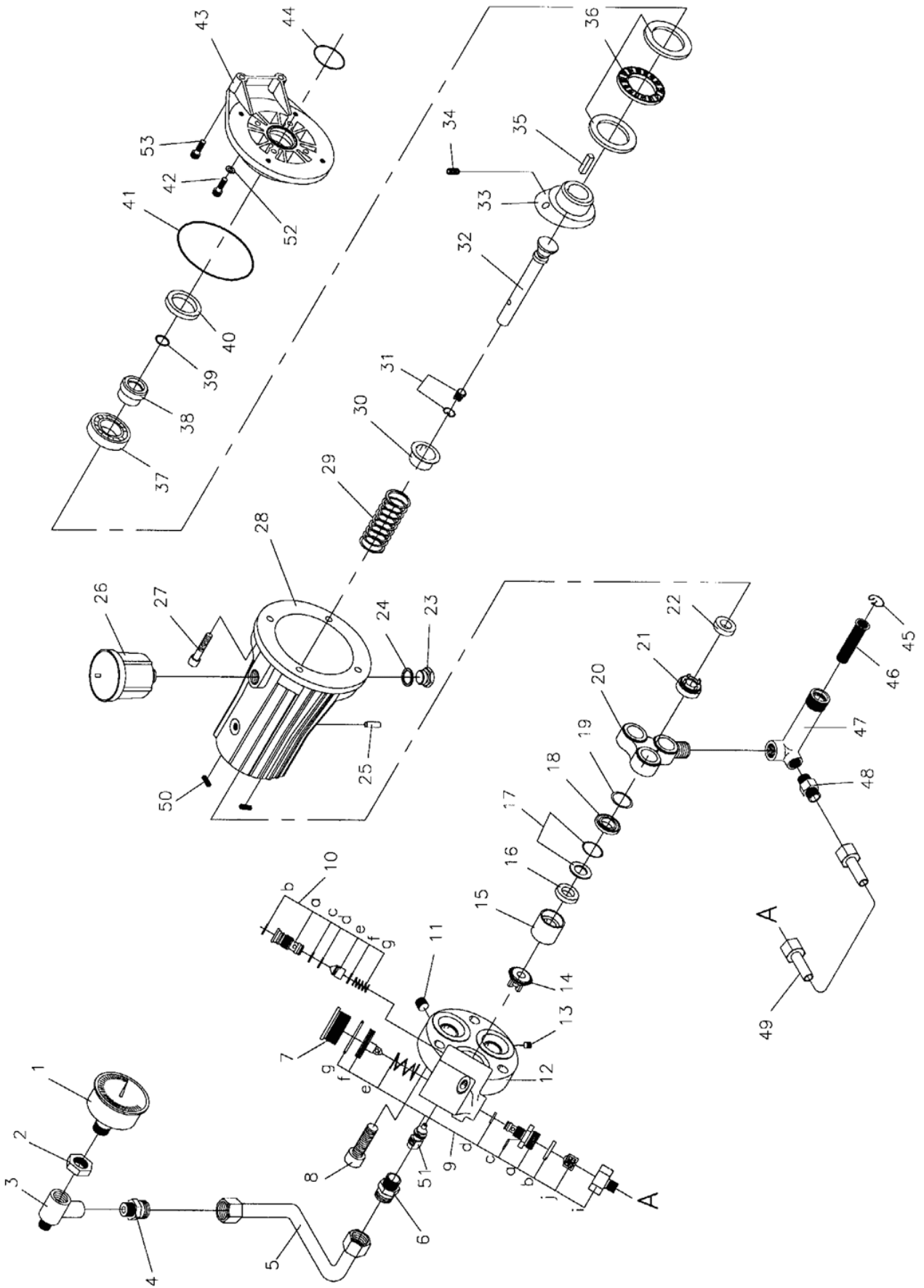
| Pos. | Ref. no. | Betegnelse<br>Description                                     | Bezeichnung<br>Description   |
|------|----------|---|--|
| 0    | 06300584 | TRANSFER "ADVARSEL"<br>TRANSFERS "WARNING"                    | WARNUNGSSCHILD F/OELGLAS<br>MARQUE D'AVERTISSEMENT P. VERRE D'HUILE          |
| 0    | 06300710 | TRANSFER "OMLØB"<br>TRANSFER "BY PASS"                        | KLEBESTREIFEN<br>AUTOCOLLANT, BY-PASS 15 MIN. AU MAXIMUM                     |
| 0    | 06301180 | TRANSFER "OLIESKIFT"<br>TRANSFER "OIL CHANGE"                 | KLEBESTREIFEN ATTENTION OELAUSTAUSCH<br>AUTO-COLLANT ATT. CHANGEMENT D'HUILE |
| 0    | 06301663 | TRANSFER "CE"<br>TRANSFERS "CE"                               | TRANSFERS CE MARKE<br>AUTOCOLLANT  |
| 0    | 06301899 | TRANSFER "G118P"<br>TRANSFER "G 118P"                         | AUTOCOLLANT "G 118P"   |
| 0    | 06301922 | TRANSFERS GERNI<br>TRANSFERS GERNI                            | KLEBESTREIFEN GERNI<br>AUTOCOLLANT GERNI                                     |
| 04   | 06080136 | LÅSESKIVE UJ/KAPPE, Ø25 MM<br>LOCK WASHER WITHOUT CAP, Ø25 MM | FEDERTELLERSCHEIBE OHNE KAPPE<br>BAGUE DENTEEON ON                           |
| 05   | 06130224 | NAVKAPSEL GRØN, RAL 6005<br>HUB CAP GREEN, RAL 6005           | ENJOLIVEUR ROUE "VERT"   |
| 05   | 06130225 | NAVKAPSEL BLÅ, RAL 5013<br>HUB CAP BLUE, RAL 5013             | ENJOLIVEUR BLEU, RAL 5013  |
| 06   | 06070345 | SKRUE, 5X35<br>SCREW, 5X35                                    | SCHRAUBE, P/K, GALV.<br>VIS T/L GALV.  |
| 07   | 06200052 | SPULERØRSHOLDER<br>LANCE HOLDER                               | LANZENHALTER PLASTIK<br>SUPPORT LANCE 600P                                   |
| 08   | 06080084 | MØTRIK, M5<br>NUT, M5   | MUTTER, GALV.<br>ECROU GALVANISE   |
| 09   | 06050649 | STØTTEBEN, Ø25X21465<br>SUPPORTING LEG, Ø25X21465             | KIPPSTÆNDER G-118P<br>BIPIED   |
| 10   | 06070445 | SKRUE, M6X60<br>SCREW, M6X60                                  | SCHRAUBE, S/K, GALV.<br>VIS T/R GALV.  |
| 11   | 06080016 | SPÆNDESKIVE, 6 MM<br>TENSION DISC, 6 MM                       | FEDERSCHEIBE, GALV.<br>RONDELLE DE SERRAGE                                   |
| 12   | 06200142 | AFSTANDSSTYKKE, Ø25<br>DISTANCE PIECE, Ø25                    | DISTANZSCHEIBE<br>ENTRETOISE TYPE D TYPE D                                   |
| 13   | 06080062 | MØTRIK, M6<br>NUT, M6   | SELBSTSCHLIESSENDE MUTTER, GALV.<br>ECROU INDESERRABLE LAITON                |
| 14   | 06050748 | HANDTAG, Ø25X21650<br>HANDLE, Ø25X21650                       | HANDGRIFF G-175<br>POIGNEE   |
| 15   | 06200064 | DUPSKO, 25<br>CAP, 25   | KAPPE<br>BOUT  |
| 16   | 06200206 | HANDHJUL<br>HAND WHEEL  | HANDRAD<br>MALETTE DE SERRAGE  |
| 17   | 06070011 | SKRUE, M8X30<br>SCREW, M8X30                                  | SETZSCHRAUBE, GALV.<br>E   |
| 18   | 06070392 | SKRUE, 5X10<br>SCREW, 5X10                                    | TAP TITE P/K, GALV.<br>TAP TITE T/L GALV.                                    |

**Stel m. motor / Frame w. motor / Gestell m. motor / Chassis a. moteur**

118 P

| Pos. | Ref. no. | Betegnelse<br>Description   | Bezeichnung<br>Description   |
|------|----------|---|--|
| 19   | 06150088 | SKRUELAG<br>SCREW COVER   | SCRAUBDECKEL NR. 001304<br>COUVERCLE P. 1/2 L BOCAL NO. 001304     |
| 20   | 06060534 | GEVINDSKIVE FOR SLAMGLAS, 55X27,5X1,5<br>PLATE FOR OIL WASTE GLASS, 55X27,5X1,5 | GEWINDESCHEIBE F/SCHLAMMGLAS<br>PLAQUE RECUPERATION HUILEUILE      |
| 21   | 06080084 | MØTRIK, M5<br>NUT, M5   | MUTTER, GALV.<br>ECROU GALVANISE                                   |
| 22   | 06150112 | SLAMGLAS<br>OIL WASTE GLASS   | SCHLAMMGLAS KLEINER TYP<br>BOCAL DE RECUPERATION D"HELEVE          |
| 23   | 06080043 | MØTRIK, M 10<br>NUT, M 10   | SELBSTSCHLIESSENDE MUTTER, GALV.<br>ECROU INDESSERRABLE            |
| 24   | 06080008 | SPÆNDESKIVE, 10X19X1,5<br>TENSION DISC, 10X19X1,5                               | FEDERSCHEIBE, GALV.<br>RONDELLE DE SERRAGE GALVA                   |
| 25   | 06060568 | MOTORBESLAG, 103 MM.<br>MOTOR FITTINGS, 103 MM.                                 | MOTORBESCHLAG G218P<br>ARMATURE DE MOTEUR G-218P                   |
| 26   | 06120199 | VIBRATIONSPLADE, 103 MM.<br>VIBRATION PLATE , 103 MM.                           | VIBRATIONSPLATTE G218P<br>JOINT ANTI-VIBRATION POUR G-218P         |
| 27   | 06080117 | SVINGNINGSDÆMPER, 218P<br>VIBRATION DAMPER, 218P                                | SCHWENKUNGSDÄMPFER, BEARBEITET<br>AMORTISSEUR DE VIBRATION 08-0041 |
| 28   | 06070389 | SÆTSKRUE, M10X60<br>SET SCREW, M10X60   | SETZBOLZEN, GALV.<br>BOULON D'ARRET GALV.                          |
| 29   | 06351018 | BENZINMOTOR 5 HK<br>PETROL MOTOR 5 HP   | HONDA BENZ. MOTOR 5,5 PS<br>HONDA MOTEUR ESSENCE 5.5 CV            |

# Pumpe / Pump / Pumpe / Pomp



# Pumpe / Pump / Pumpe / Pomp

118 P

| Pos. | Ref. no. | Betegnelse<br>Description  | Bezeichnung<br>Description  |
|------|----------|--|---|
| 0    | 06260503 | SERVICEKIT FOR PUMPE<br>SERVICE KIT FOR PUMP, G100/2000              | SERVICENSATZ PUMPE<br>KIT POMPE A EAU                             |
| 0    | 06260709 | VENTILKIT<br>VALVE KIT   | VENTILKIT<br>KIT POMPE A EAU CLAPET G1                            |
| 0    | 06260865 | MANCHETKIT, G100/175<br>CUP KIT, G100/175                            | MANCHETTENKIT<br>KIT POMPE A EAU COUPELLES                        |
| 0    | 06360175 | PUMPE KPL., G118P<br>PUMP CPL., G118P                                | PUMPE G-175 KPL. M. FLANSCH<br>POMPE COMPLETE ABRIDE              |
| 01   | 06220042 | MANOMETER, 250 BAR<br>PRESSURE GAUGE, 250/3600 BAR/PSI/ETP           | TURBO MANOMETER<br>MANOMETRE                                      |
| 02   | 06030108 | KONTRAMØTRIK, 1/4"<br>COUNTER NUT, 1/4"                              | GEGENMUTTER EV 1121 B<br>ECROU 1/4" - 3,5                         |
| 03   | 06190359 | MANOMETERKLODS<br>MANOMETER BLOCK                                    | MANOMETERKLOTZ BEARBEITET<br>RACCORD MF G100 G100                 |
| 04   | 06030537 | HYDRAULIKFORSKRUNING, 1/8"x4<br>HYDRAULIC SCREWED CONNECTION, 1/8"x4 | GEWINDESTUECK<br>RACCORD  |
| 05   | 06261744 | MANOMETERRØR KPL., Ø4<br>PIPE FOR PRESSURE GAUGE, CPL., Ø4           | MANOMETERROHR KPL.<br>TUYAU DE MANOMETRE                          |
| 06   | 06030528 | HYDRAULIKFORSKRUNING, 3/8<br>HYDRAULIC SCREWED CONNECTION, 3/8"      | HYDRAULIKVERSCHRAUBUNG<br>RACCORD A VIS 3/8"                      |
| 07   | 06180635 | PROP FOR OMLØBSVENTIL, Ø42X20<br>PLUG FOR BY-PASS VALVE, Ø42X20      | DISTANZSTOPFEN F. UMLAUFVENTIL<br>BOUCHON PIVANNE BY PASSY-Y-PASS |
| 08   | 06070400 | UNBRACO SKRUE, M10X35<br>ALLEN SCREW, M10X35                         | IMBUSSBOLZEN, GALV.<br>VIS A TETE CYLINDRIQUE 10 GALV.            |
| 09   | 06260827 | OMLØBSVENTILKIT<br>BY-PASS VALVE KIT                                 | UMLAUFVENTILKIT<br>KIT VANNE BY PASS G-100                        |
| 09B  | 06120381 | O-RING, 18,00X2,00 N70<br>O-RING, 18,00X2,00 N70                     | O-RING<br>Ø18X2   |
| 09C  | 06120188 | O-RING, 10X2<br>O-RING, 10X2   | O-RING<br>JOINT TORIQUE   |
| 09D  | 06120265 | O-RING, 7X1,5<br>O-RING, 7X1,5                                       | O-RING<br>JOINT   |
| 09G  | 06120141 | O-RING, Ø33X2,5<br>O-RING, Ø33X2,5                                   | O-RING<br>JOINT   |
| 09I  | 06180669 | OMLØBER, 27/27<br>COUPLING NUT, 27/27                                | UEBERWURFMUTTER<br>RACCORD  |
| 09J  | 06211042 | VENTIL FOR OMLØB<br>VALVE FOR BY-PASS                                | UMLAUFVENTIL<br>VANNE BY-PASS                                     |
| 10   | 06260826 | SIKKERHEDSVENTILKIT, G-100<br>SAFETY VALVE KIT, G-100                | SICHERHEITSVENTILKIT<br>KIT VANNE BY PASS G-100                   |
| 10B  | 06120267 | O-RING, Ø10,82X1,78<br>O-RING, Ø10,82X1,78                           | O-RING<br>JOINT   |
| 10C  | 06120189 | O-RING, Ø9X1,5<br>O-RING, Ø9X1,5                                     | O-RING 90<br>JOINT VANNE DETERGENT G30                            |

# Pumpe / Pump / Pumpe / Pomp

118 P

| Pos.  | Ref. no. | Betegnelse<br>Description                                 | Bezeichnung<br>Description  |
|-------|----------|---|---|
| 10D   | 06120304 | O-RING, Ø9X1,5<br>O-RING, Ø9X1,5                          | O-RING<br>JOINT   |
| 11    | 06030554 | RØRPROP, 1/8"<br>PLUG FOR PIPE, 1/8"                      | ROHRSTOPFEN<br>RACCORD  |
| 12    | 06180662 | ZYLINDERHOVED<br>CYLINDER HEAD                            | ZYLINDERKOPF M/VENTILGEH.<br>CULASSE = REF 261323                       |
| 13    | 06070478 | PINOLSKRUE, M6X8<br>POINTED SCREW, M6X8                   | REITSTOCKSCHRAUBE, ROSTFREI<br>VIS                                      |
| 14    | 06210892 | VENTIL KPL.<br>VALVE CPL.                                 | VENTIL KPL.<br>VANNE COMPLETE   |
| 15    | 06180595 | MANCETHOLDER, Ø34X30<br>CUP HOLDER, Ø34X30                | MANSCHEITTENHALTER<br>SUPPORT   |
| 15-19 | 06210895 | CYLINDERSTYKKE, KPL.<br>CYLINDER PIECE, CPL.              | ZYLINDERSTUECK KPL. G2000<br>PIECE DE CYLINDRE CPL. G-2000              |
| 16    | 06120208 | MANCHET   | MANSCHEITTE<br>RONDELLE   |
| 17    | 06200123 | STØTTERING, Ø18X30X2<br>BACK-UP RING, Ø18X30X2            | STUETZRING<br>ANNEAU D'ETAIEMENT D. 18X3                                |
| 17A   | 06120225 | O-RING, 26X2<br>O-RING, 26X2                              | O-RING G100/2000<br>JOINT TORIQUE DIAM 26 X 2G100/G2000                 |
| 18    | 06180596 | BACK-UP RING, Ø34X6<br>BACK-UP RING, Ø34X6                | STUETZRING G100/2000<br>ANNEAU  |
| 19    | 06120051 | O-RING, 25.3X2,4<br>O-RING, 25.3X2,4                      | O-RING<br>JOINT TORIQUE   |
| 20    | 06180475 | SUGEKLODS<br>SUCTION BLOCK                                | SAUGGEHAEUSE<br>CULASSE   |
| 21    | 06211043 | MANCETHOLDER KPL, G100/2000<br>CUP HOLDER CPL., G100/2000 | MANSCHEITTENHALTER KPL.<br>SUPPORT D'ETANCHEITE (R.0)                   |
| 21A   | 06200133 | BØSNING, Ø31.8X26<br>SLEEVE, Ø31.8X26                     | BUCHSE FUER SAUGMANSCHEITTE<br>BAGUE DIAM 31,3 X 19SP. *SP. Ø318X26 PLS |
| 22    | 06120207 | OLIETÆTNINGSRING, Ø18/28X7<br>OIL SEALING RING, Ø18/28X7  | OELDICHUNGSRING<br>BAGUE ETANCHEITE HUILE 18ILE                         |
| 23    | 06180481 | OLIEAFTAPNINGSPROP, 22X16<br>OIL PLUG, 22X16              | OELZAPFSTOPFEN<br>BOUCHON FUEL  |
| 23A   | 06200010 | MAGNET, Ø10X7<br>MAGNET, Ø10X7                            | MAGNET<br>AIMANT  |
| 24    | 06120211 | PAKNING<br>GASKET   | DICHTUNG<br>JOINT SPY JET   |
| 25    | 06180287 | OLIEAFLØBSRØR, Ø6X15<br>OIL WASTE PIPE, Ø6X15             | OELBLAUFROHR<br>TUYAU DE VIDANGE D. HUILE                               |
| 26    | 06150117 | OLIEFYLNINGSGLAS, 1/2<br>OIL FILLING GLASS, 1/2           | OELAUFFUELLGLAS KPL.<br>VERRE D'HUILE AVEC COUVER                       |
| 27    | 06070401 | UNBRACO SKRUE, M8X40<br>ALLEN SCREW, M8X40                | IMBUSSBOLZEN, GALV.<br>BOULON A TETE CYLINDRIQUE GALV.                  |

# Pumpe / Pump / Pumpe / Pomp

118 P

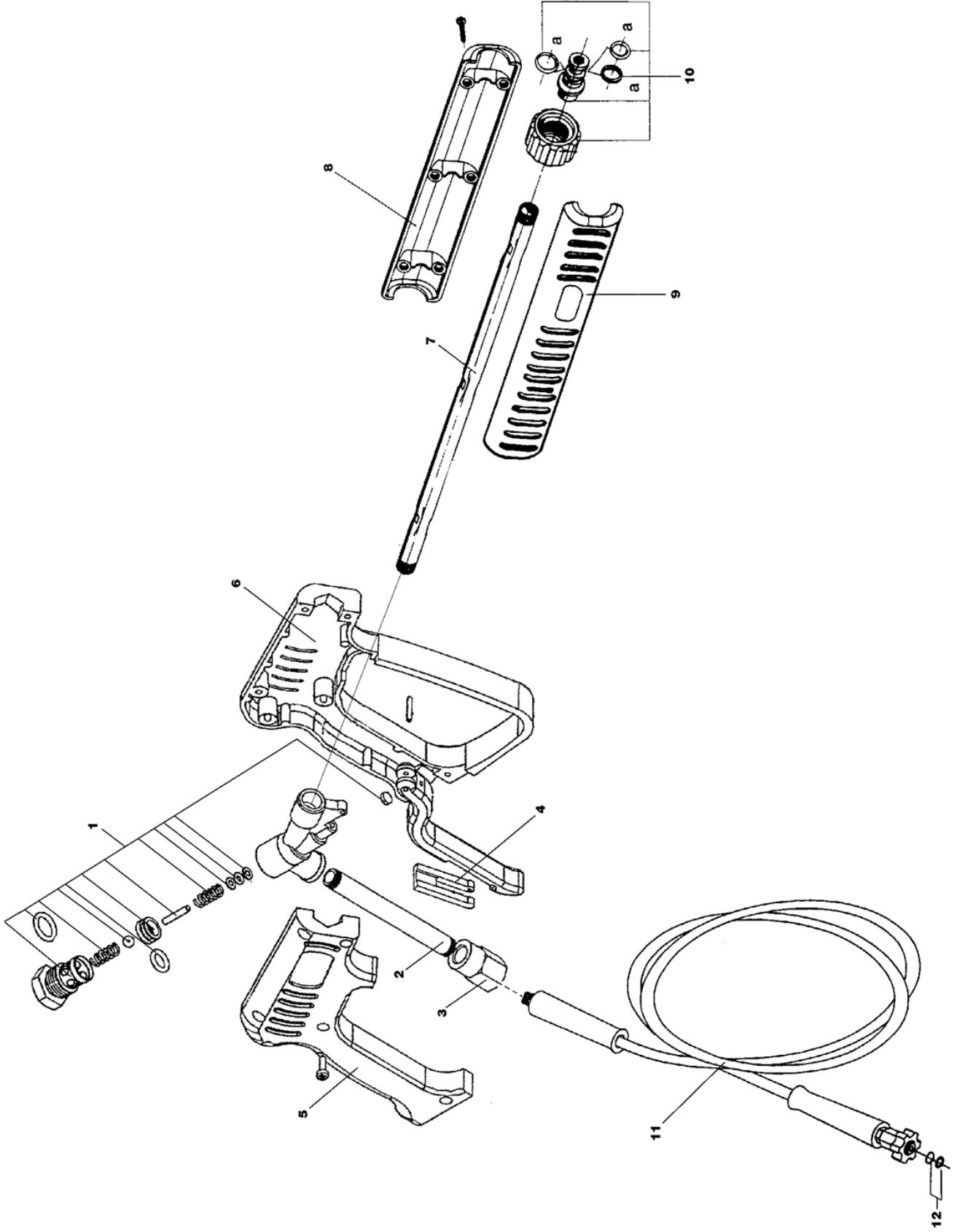
| Pos.  | Ref. no. | Betegnelse<br>Description   | Bezeichnung<br>Description                                       |
|-------|----------|---|--|
| 28    | 06180546 | STEMPELSTYR, 100/200 ALU<br>PISTON GUIDE, 100/200 ALU                                   | KOLBENFUHRUNG BEARBEITET<br>CARTER                               |
| 29    | 06280065 | FJEDER<br>SPRING  | FEDER<br>RESSORT DE PISTON                                       |
| 30    | 06060692 | FJEDERHOLDER, Ø39X16 PL 1 MM<br>SPRING HOLDER, Ø39X16 PL 1 MM                           | FEDERHALTER<br>VIS DE FERMETURE DIAM 39                          |
| 31    | 06210893 | VENTIL SUG G100/G2000   | VENTILANSAUGUNG<br>VANNE D'ASPIRATION G100/G2000                 |
| 31-32 | 06210894 | STEMPEL, KPL., 100/200<br>PISTON, CPL., 100/200   | PISTON, CPL., 100/200  |
| 33    | 06180598 | SKRÅKIVE, 10,30<br>CAM DISC, 10,30  | BOGENSCHEIBE, GEDREHT<br>DISQUE INCLINE 118PEL EL                |
| 34    | 06070051 | RØRSKRUE, 8X16<br>PLUG, 8X16  | IMBUSSREITSTOCKSCHRAUBE<br>VIS PIVOT A TETE CYLINDRIQUE          |
| 35    | 06280068 | FEDER, 8X7X22<br>KEY, 8X7X22  | FEDER<br>CLAVETTE  |
| 36    | 06140032 | AKSIALLEJE, KPL.<br>AXIAL BEARING, CPL.   | BUTEE, CPL.  |
| 37    | 06140034 | KUGELEJE, Ø55X30X13<br>BALL BEARING, Ø55X30X13  | KUGELLAGER SPOR<br>PALIER A ROULEAUX G-118P                      |
| 38    | 06180603 | AFSTANDSRING FOR MOTORAKSEL, Ø35XØ20X29,5<br>DISTANCE RING FOR MOTOR AXLE, Ø35XØ20X29,5 | DISTANZRING F/BENZINMODELL<br>BAGUE D'ECARTEMENT P/M. FUEL G118P |
| 39    | 06120224 | O-RING, Ø18X2,5<br>O-RING, Ø18X2,5  | O-RING<br>JOINT TORIQUE 18,2 X 2,5                               |
| 40    | 06120221 | OLIETÆTNINGSRING, 35X47X7<br>OIL SEALING RING, 35X47X7                                  | SIMMERRING<br>BAGUE ETANCHEITE HUILE 35                          |
| 41    | 06120150 | O-RING, Ø105X2,5<br>O-RING, Ø105X2,5  | O-RING F ZYLINDERKOPF<br>JOINT TORIQUE                           |
| 42    | 06070391 | SKRUE, 8X30<br>SCREW, 8X30  | IMBUSSSCHRAUBE<br>BOULON A TETE CYLINDRIQUE                      |
| 43    | 06180597 | MELLEMLANGE, Ø160X20<br>INTERMEDIATE FLANGE, Ø160X20                                    | ZWISCHENFLANSCH, BEARBEITET<br>MANCHON INTERM. FACONNE           |
| 44    | 06120252 | O-RING, Ø42X2<br>O-RING, Ø42X2  | O-RING<br>JOINT  |
| 45    | 06080130 | LÅSEKIVE<br>LOCK WASHER   | SCHLISSRING F. WASSERFILTER<br>RONDELLETTE A EAU                 |
| 46    | 06100277 | FILTER INDSATS<br>FILTRE P 9  | FILTEREINSATZ<br>FILTRE P 9                                      |
| 47    | 06190358 | FILTERHUS<br>FILTER HOUSING   | FILTERGEHÄUSE BEARBEITET<br>CORPS A FILTRE G 100                 |
| 48    | 06030608 | HYDRAULIKFORSKRUNING, 1/4"X4<br>HYDRAULIC SCREWED CONNECTION, 1/4"X4                    | GEWINDESTUECK<br>RACCORD   |
| 49    | 06261746 | OMLØBSRØR, KPL., G118P Ø8<br>CIRCULATION PIPE, CPL., G118P Ø8                           | UMLAUFROHR KPL. G118P<br>TUYAU BY-PASS CPL. G118P                |



**Pumpe / Pump / Pumpe / Pomp**

118 P

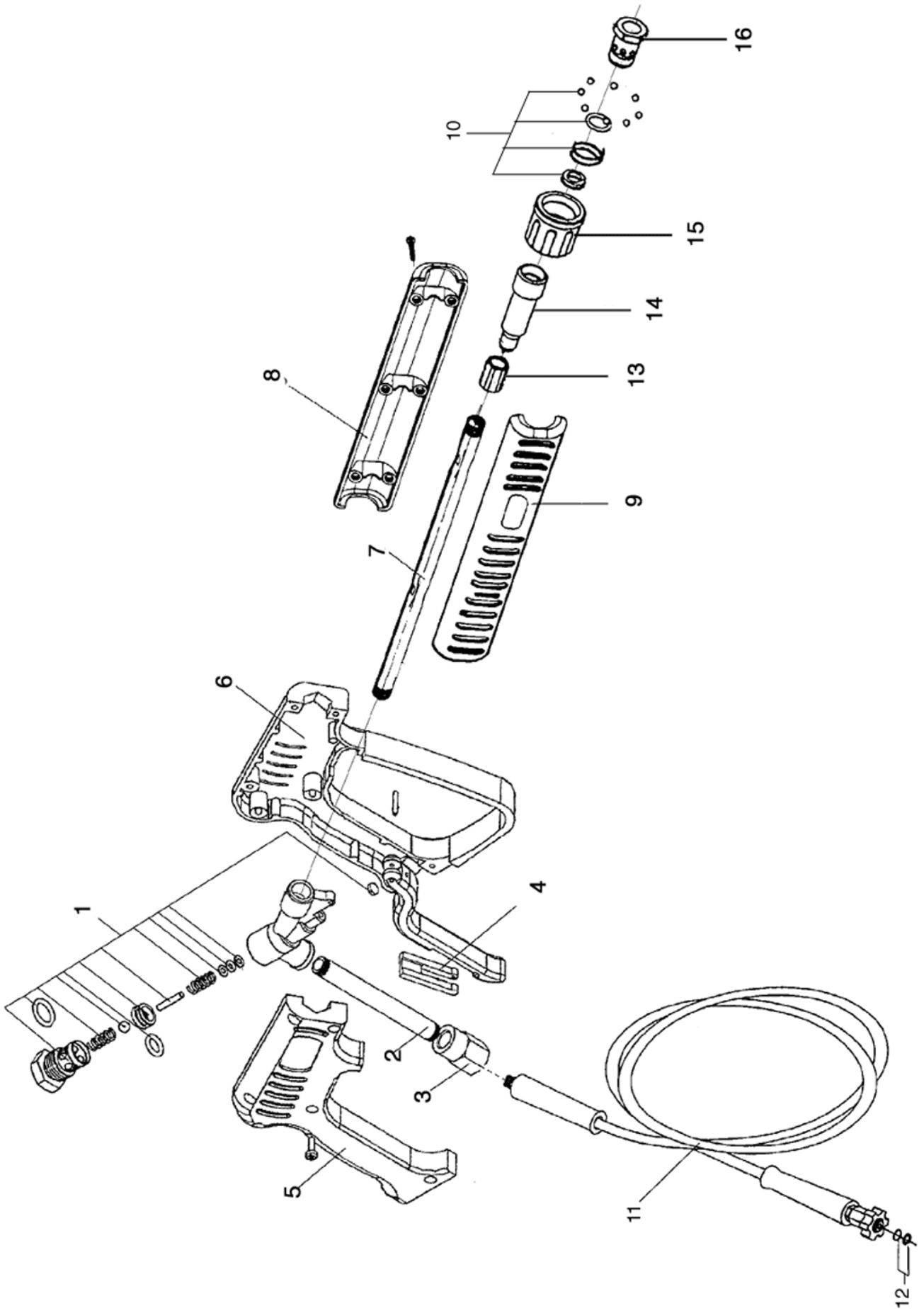
| Pos. | Ref. no. | Betegnelse<br>Description                       | Bezeichnung<br>Description                 |
|------|----------|---|--|
| 50   | 06120215 | AFDÆKNINGSGUMMI, 5X6X9<br>COVER RUBBER, 5X6X9   | ABDECKGUMMI<br>BOUCHON CAOUTCHOUC          |
| 51   | 06180893 | INJECTORDYSE<br>INJECTOR NOZZLE                 | INJEKTORDUESE<br>GICLEUR DE CULASSE        |
| 52   | 06120355 | USITRING, 8,70X13,0X1<br>USIT RING, 8,70X13,0X1 | USITRING<br>ANNEAU USIT                    |
| 53   | 06070391 | SKRUE, 8X30<br>SCREW, 8X30                      | IMBUSSCHRAUBE<br>BOULON A TETE CYLINDRIQUE |



**Pistol 98 / Pistol 98 / Pistole 98 / Pistol 98**

118 P

| Pos. | Ref. no. | Betegnelse<br>Description  | Bezeichnung<br>Description                                      |
|------|----------|--|---|
| 0    | 06290028 | PISTOL ASTRA 320 3/8<br>PISTOL, 98                                     | PISTOLE ASTRA 320<br>PISTOLET MRM320=290113                     |
| 01   | 06261543 | SERVICEKIT F. PISTOL MTM<br>SERVICE KIT FOR PISTOL , MTM               | KIT F. PISTOLE MTM<br>KIT DE SERVICE P.PISTOLET                 |
| 02   | 06050981 | TILGANGSRØR<br>INLET PIPE  | EINLASSROHR F. PISTOL<br>TUBE D'ENTREE PISTOLET                 |
| 03   | 06261950 | DREJELED, KPL.<br>SWIVEL, CPL.   | DREHGELENK<br>JOINT TOURNANT, CPL.                              |
| 04   | 06200384 | SIKKERHEDSPAL<br>SAFETY LOCK   | SPERRVORRICHTUNG<br>ARRET DE SURETE MTM                         |
| 05   | 06200420 | PISTOLKROP<br>PISTOL HOUSING   | PISTOLKÖRPER RECHTS<br>CORPS DE PISTOLET                        |
| 06   | 06200421 | PISTOLKROP<br>PISTOL HOUSING   | PISTOLKÖRPER LINKS<br>CORPS DE PISTOLET                         |
| 07   | 06050980 | FORRØR FOR PISTOL<br>FRONT PIPE FOR PISTOL                             | VORDERROHR F. PISTOLE<br>TUBE                                   |
| 08   | 06200423 | KAPPE VENSTRE<br>CAP LEFT  | KAPPE FÜR FOHRROHR LINKS<br>CARTER DE PISTOLETUCHE UCHE         |
| 09   | 06200422 | KAPPE, HØJRE<br>CAP, RIGHT   | KAPPE FÜR VORROHR RECHTS<br>CARTER DE PISTOLETOITE OITE         |
| 10   | 06261568 | SKRUEKOBLING FOR PISTOL<br>SCREW COUPLING FOR PISTOL                   | SCHRAUBENKUPPLUNG F. PISTOLE<br>RACCORD D'ACCOUPLLEMENT P.OLETS |
| 10A  | 06261547 | PAKNINGSSKIT F. SKRUEKOBL.<br>GASKET KIT FOR SCREW COUPLING            | SCHRAUBKUPPLUNG<br>KIT P. JOINTS TORIQUES RACC.A.VIS            |
| 11   | 06110626 | HØJTRYKSSLANG DN8X8<br>HIGH PRESSURE HOSE, 3/8"X3/8" NIPPLE, Ø8 MM 8 M | HOCHDRUCKSCHLAUCH<br>FLEXIBLE REMPL.P/110476                    |
| 12   | 06260936 | PAKNINGSSKIT F. SKRUEKOB.<br>GASKET KIT FOR SCREW COUPLING             | DICHTUNGSSKIT F. SCHRAUBENKUPPLUNG<br>KIT JOINT RACCORD VIS VIS |

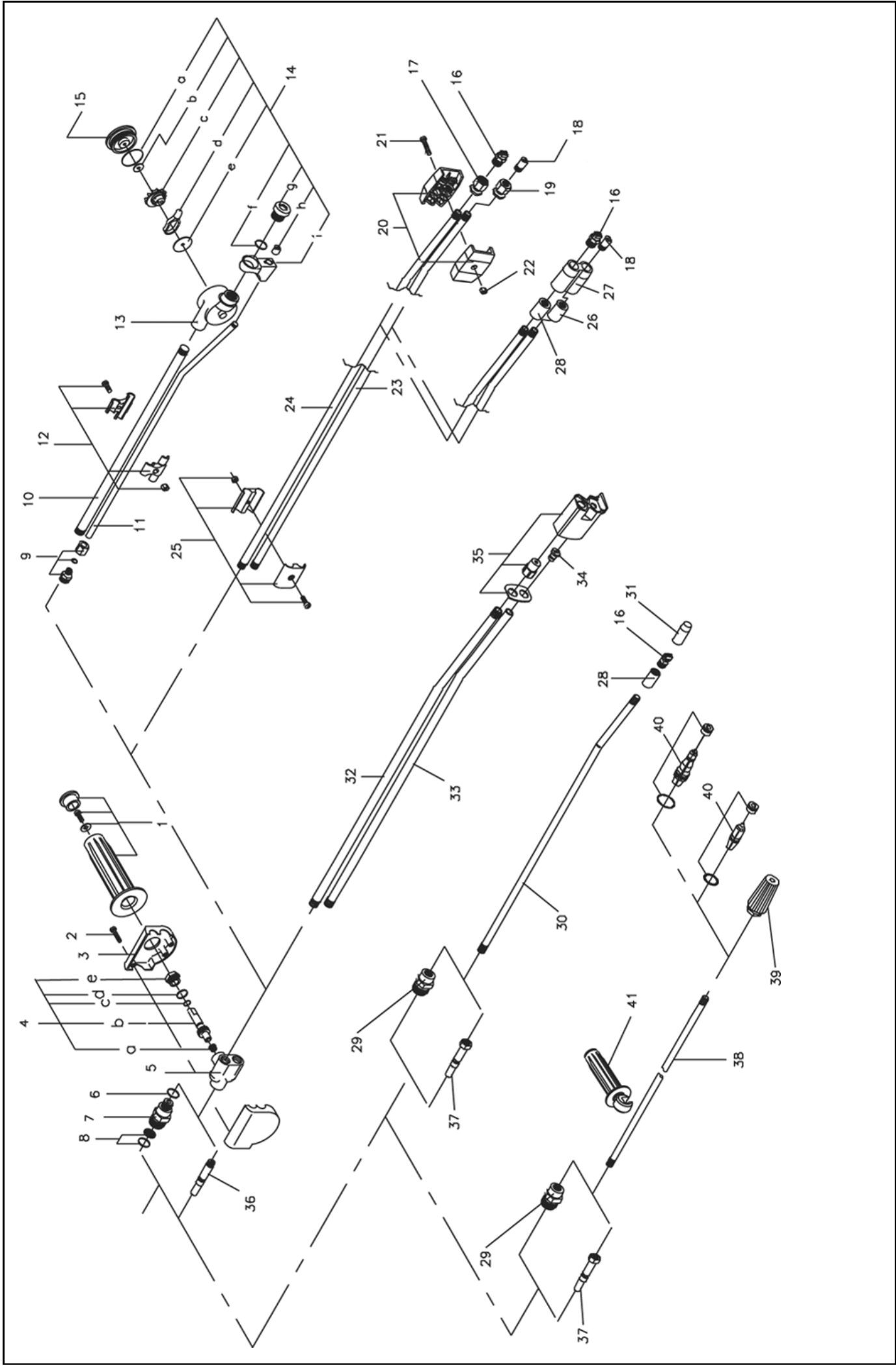


**Pistol / Pistol / Pistole / Pistolet**

118 P

| Pos. | Ref. no. | Betegnelse<br>Description   | Bezeichnung<br>Description                                     |
|------|----------|---|--|
| 0    | 06290080 | PISTOL LANG M. QUICK<br>PISTOL WITH QUICK COUPLING                      | PISTOLET 3/8 EME   |
| 01   | 06261543 | SERVICEKIT F. PISTOL MTM<br>SERVICE KIT FOR PISTOL , MTM                | KIT F. PISTOLE MTM<br>KIT DE SERVICE P.PISTOLET                |
| 02   | 06050981 | TILGANGSRØR<br>INLET PIPE   | EINLASSROHR F. PISTOL<br>TUBE D'ENTREE PISTOLET                |
| 03   | 06261950 | DREJELED, KPL.<br>SWIVEL, CPL.  | DREHGELENK<br>JOINT TOURNANT, CPL.                             |
| 04   | 06200384 | SIKKERHEDSPAL<br>SAFETY LOCK  | SPERRVORRICHTUNG<br>ARRET DE SURETE MTM                        |
| 05   | 06200420 | PISTOLKROP<br>PISTOL HOUSING  | PISTOLKÖRPER RECHTS<br>CORPS DE PISTOLET                       |
| 06   | 06200421 | PISTOLKROP<br>PISTOL HOUSING  | PISTOLKÖRPER LINKS<br>CORPS DE PISTOLET                        |
| 07   | 06051045 | FORRØR FOR PISTOL<br>FRONT PIPE FOR PISTOL                              | TUBE AVANT PISTOLET290080                                      |
| 08   | 06200525 | KAPPE<br>CAP  | CACHE TUBE PISTOLET290080                                      |
| 09   | 06200524 | KAPPE<br>CAP  | CACHE TUBE PISTOLET290080                                      |
| 10   | 06262246 | KIT FOR LYNKOBLING<br>KIT FOR QUICK COUPLING                            | KIT JOINTS RACCORD RAPIDE                                      |
| 11   | 06110626 | HØJTRYKSSLANGE DN8X8<br>HIGH PRESSURE HOSE, 3/8"X3/8" NIPPLE, Ø8 MM 8 M | HOCHDRUCKSCHLAUCH<br>FLEXIBLE REMPL.P/110476                   |
| 12   | 06260936 | PAKINGSKIT F. SKRUEKOB.<br>GASKET KIT FOR SCREW COUPLING                | DICHTUNGSKIT F. SCHRAUBENKUPPLUNG<br>KIT JOINT RACCORD VIS VIS |
| 13   | 06262287 | MUFFE, 1/4"-1/4"<br>SOCKET, 1/4"-1/4"                                   | MANCHON P/PISTOLET 290080                                      |
| 14   | 06262286 | KOBLING<br>COUPLING   | RACCORD VIS P/PISTOLET   |
| 15   | 06262284 | OMLØBER<br>COUPLING NUT   | ECROU D/RACCORD P/PISTOLE                                      |
| 16   | 06262285 | KOBLING<br>COUPLING   | RACCORD P/PISTOLET 290080                                      |

Spulerør / Lances / Lanzen / Lance



# Spulerør / Lances / Lanzen / Lance

| Pos. | Ref. no. | Betegnelse<br>Description  | Bezeichnung<br>Description  | 118 P |
|------|----------|--|---|-------|
| 0-A  | 06261091 | TURBO-LASER 600 MM 5.0<br>TURBO LASER W. PRES. REG. - SCREW - 600 MM, 5.0                  | TURBO LASER<br>TURBO-LASER 600MM G-118/1                                      | 1     |
| 0-A  | 06262065 | TURBO-LASER 600MM QUICK<br>TURBO LASER W. PRES. REG. - QUICK - 600 MM, 5.0                 | TURBO-LASER 600MM RAPIDE  | 1     |
| 0-B  | 06260758 | DOBBELT SPULERØR 600MM EXCL.TRYKDYSE<br>DOUBLE LANCE - PRES. REG.- SCREW -600 MM,          | DOPPELLANZE<br>DOUBLE LANCE 600MM   | 1     |
| 0-B  | 06262063 | DOBB.SPULERØR 600MM QUICK<br>DOUBLE LANCE - PRES. REG.- QUICK -600 MM,                     | LANCE DOUBLE RAPIDE, 600M   | 1     |
| 0-C  | 06260382 | ENKELT SPULERØR 600 MM<br>SINGLE LANCE - SCREW - 600 MM, EXCL.NOZ                          | EINZELLANZE<br>LANCE SIMPLE 600 MM  | 1     |
| 0-C  | 06262059 | ENK.SPULERØR 600MM QUICK<br>SINGLE LANCE - QUICK - 600 MM, EXCL.NOZ                        | LANCE SIMPLE RAPIDE, 600M   | 1     |
| 0-D  | 06261957 | SPECTRUM 600MM U/TRYKDYSE<br>SPECTRUM W. PRES. REG. - SCREW - 600 MM,                      | SPECTRUM OHNE DÜSE - 600 MM<br>SPECTRUM SANS GICLEUR - 600 MM                 | 1     |
| 0-D  | 06261989 | SPECTRUM M/ TRYKREG. - SKRUE - 600 MM, 145<br>SPECTRUM W. PRES. REG. - SCREW - 650 MM, 145 | SPECTRUM DÜSE<br>LANCE SPECTRUM   | 1     |
| 0-D  | 06262092 | SPECTRUM M/ TRYKREG. - LYN - 600 MM, 145<br>SPECTRUM W. PRES. REG. - QUICK - 600 MM, 145   | LANCE SPECTRUM 600/44.5MM   | 1     |
| 0-D  | 06262253 | SPECTRUM 600 U.DYSE QUICK<br>SPECTRUM W. PRES. REG. - QUICK - 600 MM,                      | LANCE SPECTRUM R.R-S/GICL   | 1     |
| 0-E  | 06262112 | ROTO JET LANSE 045 600MM<br>ROTO JET - SCREW - 600 MM, 4.5                                 | LANCE ROTO JET 045  | 1     |
| 0-E  | 06262123 | ROTO JET M/LYN - 600 MM, 4.5<br>ROTO JET - QUICK - 600 MM, 4.5                             | LANCE ROTO JET RAPIDE 045   | 1     |
| 01   | 06260232 | HANDTAGSKIT F.SPULERØR<br>HANDLE KIT   | HANDGRIFFKIT F. DOPPELLANZE<br>KIT SERVICE AVEC POIGNEENNE DOUBLE             | 1     |
| 02   | 06070479 | SKRUE, 4X20<br>SCREW, 4X20   | SCHNEIDSCHRAUBE, SCHWARZZINK<br>VIS   | 3     |
| 03   | 06200097 | PYNTEDÆKSEL F.VENTILHUS<br>COVER F. VALVE HOUSING  | STAUBKAPPE F. VENTILGEHAE<br>COUVERCLEOR. D. VAN OR. D. VAN                   | 1     |
| 04   | 06260860 | VENTILSPINDEL KIT<br>VALVE SPINDLE KIT   | VENTILSPINDELKIT F. DRUCKREGELUNG<br>KIT REGLAGE PRESSION DOUBEGL. PRES.      | 1     |
| 04C  | 06120006 | O-RING, 6.75X1.78<br>O-RING, 6.75X1.78   | O-RING<br>JOINT TORIQUE MAT 4470  | 1     |
| 04D  | 06120010 | O-RING, 13.1X1.6<br>O-RING, 13.1X1.6   | O-RING<br>JOINT TORIQUE MAT 4470  | 1     |
| 04E  | 06190245 | MØTRIK<br>NUT  | MUTTER F. VENTIL<br>ECROU POUR VANNE DOUB.LAN                                 | 1     |
| 05   | 06211078 | VENTILHUS<br>VALVE HOUSING   | VENTILGEHAEUSE, KPL.<br>CULASSE LANCE DOUBLE ET                               | 1     |
| 06   | 06120188 | O-RING, 10X2<br>O-RING, 10X2   | O-RING<br>JOINT TORIQUE   | 1     |
| 07   | 06030484 | SKRUEKOBLING 1/4 UDY.<br>SCREW COUPLING ROTATABLE, 1/4"                                    | SCHR.KUPPLUNG DREHBAR F.DOPPELLANZE<br>ACCOUPL. VIS TOURNANT DBL LANCE DOUBLE | 1     |

## Spulerør / Lances / Lanzen / Lance

| Pos. | Ref. no. | Betegnelse<br>Description  | Bezeichnung<br>Description  | 118 P |
|------|----------|--|---|-------|
| 08   | 06100332 | FILTER FOR TURBO LASER<br>FILTER FOR TURBO LASER                         | FILTER F. TURBO LASER M. O-RING<br>FILTRE TURBO LASER                           | 1     |
| 08A  | 06120139 | O-RING, 10X1<br>O-RING, 10X1   | O-RING<br>JOINT SPY JET   | 1     |
| 09   | 06030527 | BRYSTNIPPEL, 8X1/4"<br>BREAST NIPPLE, 8X1/4"                             | GEWINDESTUECK<br>RACCORD  | 1     |
| 10   | 06050841 | SPULERØR LIGE, Ø13X1,5X586<br>LANCE STRAIGHT, Ø13X1,5X586                | LANZE GERADE TURBO LASER<br>LANCE DROITE TURBO LASER                            | 1     |
| 11   | 06050842 | KEMIRØR 15 GR. BUK , Ø8X1X622<br>DETERGENT PIPE 15 DEG., Ø8X1X622        | REI.MITTLERØHR 15 GR. VERB. F. T. L.<br>TUYAU POUR LANCESER, 15 DSER, 15 DEGRES | 1     |
| 12   | 06261130 | BESLAG FOR TURBO LASER<br>FITTINGS FOR TURBO LASER                       | BESCHLAG F. TURBO LASER ROHR<br>ARMATURE POUR TURBO LASER TUYAU                 | 1     |
| 13   | 06261289 | TURBO LASER HUS , Ø2,7 MAX 720 L<br>TURBO LASER HOUSING, Ø2,7 MAX 720 L  | GEHAUSE F. TURBO-LASER<br>CORPS DE TURBO LASER CPL. CPL.                        | 1     |
| 14   | 06261111 | TURBO LASER KIT, 5.0<br>TURBO LASER KIT, 5.0                             | SERVICEKIT F. TURBO LASER<br>KIT REP. TURBO LASER G 11 LASER                    | 1     |
| 14A  | 06120544 | O-RING, 36.0X1,78<br>O-RING, 36.0X1,78                                   | JOINT TORIQUE   | 1     |
| 14F  | 06120282 | O-RING, 14X1,78<br>O-RING, 14X1,78                                       | O-RING<br>JOINT TORIQUE 14 X 1,78   | 1     |
| 14H  | 06180533 | DYSE, Ø10X12<br>NOZZLE, Ø10X12   | DUESE<br>GICLEUR DIA. 10X12   | 1     |
| 15   | 06180936 | LÅG FOR TURBO LASER<br>COVER FOR TURBO LASER                             | DECKEL F. TURBO LASER, BEARBEITET<br>COUVER.P.TURBO LASER FACOR, FACONNE        | 1     |
| 16   | 06090140 | DYSE HÆRDET 1/4-1505<br>FLAT JET NOZZLE 15°, 5                           | FLACHSTRAHLDUESE 15°<br>GICLEUR DURCI 1/4MEG 1505                               | 1     |
| 17   | 06180780 | DYSEHOLDER, 17X20<br>NOZZLE HOLDER, 17X20                                | DUESENHALTER F/HOCHDRUCKDUESE<br>SUPPORT DE GICLEUR H.P.EUEUR H.P.              | 1     |
| 18   | 06180779 | KEMIDYSE, Ø10X22<br>DETERGENT NOZZLE, Ø10X22                             | REINIGUNGSMITTELDUESE<br>GICLEUR DETERGENT                                      | 1     |
| 19   | 06180781 | DYSEHOLDER FOR KEMI, 17X20<br>NOZZLE HOLDER FOR DETERGENTS, 17X20        | DUESENHALTER F/REINIGUNGSMITTEL<br>SUPPORT DE GICLEUR DETERGENT                 | 1     |
| 20   | 06200226 | DYSEBESKYTTER<br>NOZZLE PROTECTION, PLASTIC                              | DUESENSCHUTZ KUNSTSTOFF<br>PROTECTION GICLEUR PLASTI PLASTIQUE                  | 2     |
| 21   | 06070497 | SKRUE, 5X22<br>SCREW, 5X22   | SCHRAUBE, ROSTFREI, Z/K<br>VIS C/H INOX   | 1     |
| 22   | 06080123 | MØTRIK, M5<br>NUT, M5  | MUTTER, ROSTFREI<br>RONDELLE  | 1     |
| 23   | 06050941 | KEMI-RØR, RUSTFRI, Ø13X1,5X591<br>DETERGENT PIPE, STAINLESS, Ø13X1,5X591 | DOPPELLANZE<br>TUBE DE LANCE BP   | 1     |
| 24   | 06050940 | SPULERØR, RUSTFRI, Ø13X1,5X596<br>LANCE, STAINLESS, Ø13X1,5X596          | DOPPELLANZE<br>TUBE DE LANCE HP   | 1     |
| 25   | 06260537 | BESLAG F. DOBB. SPULERØR<br>FITTINGS FOR DOUBLE LANCE                    | BESCHLAG F/DOPPELLANZE TURBO<br>ENTRETOISE LANCE TURBOE TE TURBO                | 1     |



## Spulerør / Lances / Lanzen / Lance

| Pos. | Ref. no. | Betegnelse<br>Description   | Bezeichnung<br>Description   | 118 P |
|------|----------|---|--|-------|
| 26   | 06181232 | DYSEHOLDER FOR KEMI, Ø18X26<br>NOZZLE HOLDER FOR DETERGENTS, Ø18X26                     | DUESEHALTER F. REINIGUNGSMITLEDUESE<br>SUPPORT GICLEUR POUR DETER DE DETERGENT | 1     |
| 27   | 06200374 | DYSESKYTTER DOBBELT<br>NOZZLE PROTECTION, PLASTIC, DOBBLE                               | DUESESCHUTZ - DOBBELT<br>PROTECT.PLAST.GICLEUR LAN                             | 1     |
| 28   | 06030643 | MUFFE FOR SPULERØR, Ø10<br>SOCKET FOR LANCE, Ø10  | MUFFE F. LANZE<br>MANCHON POUR LANCE INOX                                      | 1     |
| 28   | 06181233 | DYSEHOLDER , Ø18X26<br>NOZZLE HOLDER , Ø18X26   | DUESEHALTER F. HOCHDRUCKDUESE<br>SUPPORT GICLEUR HAUTE PRR HAUTE PRESSION      | 1     |
| 29   | 06030485 | SKRUEKOBLING, 1/4" INDV.<br>SCREW COUPLING, 1/4"  | SCHRAUBENKUPPLUNG, NICHT DREHBAR<br>ACCOUPL. VIS 1/4 INT.NT NT                 | 1     |
| 30   | 06050116 | SPULERØR, RUSTFRI, Ø13X586<br>LANZE, STAINLESS, Ø13X586                                 | LANZE, ROSTFREI<br>LANZE INOX DIAM. 13X586                                     | 1     |
| 31   | 06200375 | DYSESKYTTER ENKELT<br>NOZZLE PROTECTION, PLASTIC, SINGLE                                | DUESESCHUTZ<br>PROTECT.PLAST.GICLEUR LAN                                       | 1     |
| 35   | 06261967 | SPECTRUM KIT, 145<br>SPECTRUM KIT, 145  | SPECTRUM KIT<br>KIT SPECTRUM 401/  | 1     |
| 36   | 06030649 | LYNKOBLING 1/4 UDV.<br>QUICK COUPLING, 1/4"   | SCHNELLKUPPLUNG<br>RACCORD RAPIDE  | 1     |
| 37   | 06030827 | NIPPEL QUICK-1/4" INDV.<br>NIPPLE, 1/4"   | RACCORD RAPIDE 1/4" INTER  | 1     |
| 38   | 06050841 | SPULERØR LIGE, Ø13X1,5X586<br>LANZE STRAIGHT, Ø13X1,5X586                               | LANZE GERADE TURBO LASER<br>LANZE DROITE TURBO LASER                           | 1     |
| 39   | 06262134 | ROTO JET DYSE KPL., 4.5<br>ROTO JET NOZZLE CPL., 4.5                                    | GICLEUR ROTO CPL. 4.5  | 1     |
| 40   | 06262223 | ROTO DYSE KIT, 4.5<br>ROTO JET NOZZLE KIT, 4.5  | KIT POUR GICLEUR ROTO 045  | 1     |
| 41   | 06260365 | HANDGREB TIL ROT. BØRSTER OG ENKELT LANSERØR,<br>HANDLE FOR ROTATING BRUSHES AND SINGLE | HANDGRIFF<br>POIGNEE DE MAINTIEN LANCE   | 1     |